

Features

- Solid brass frame
- Basket extends approximately
- 5-5/8" from the wall
- Basket has a running length of approximately 5-13/16"

Basket

26550

Codes / Standards Compliance

Meets or exceeds the following at date of manufacture:

- All applicable US Federal and State material regulations



Colors / Finishes

- PC: Polished Chrome
- PN: Polished Nickel
- SN: Satin Nickel

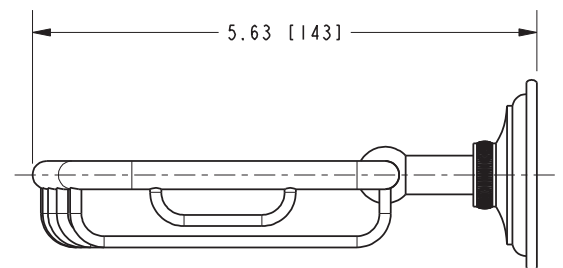
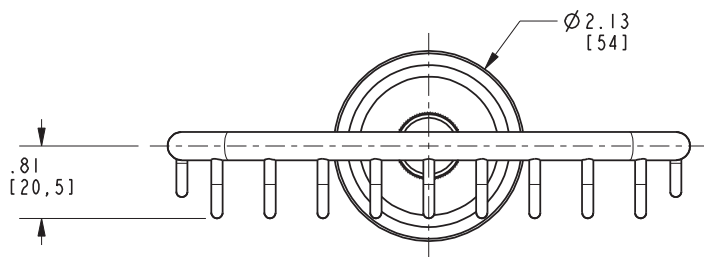
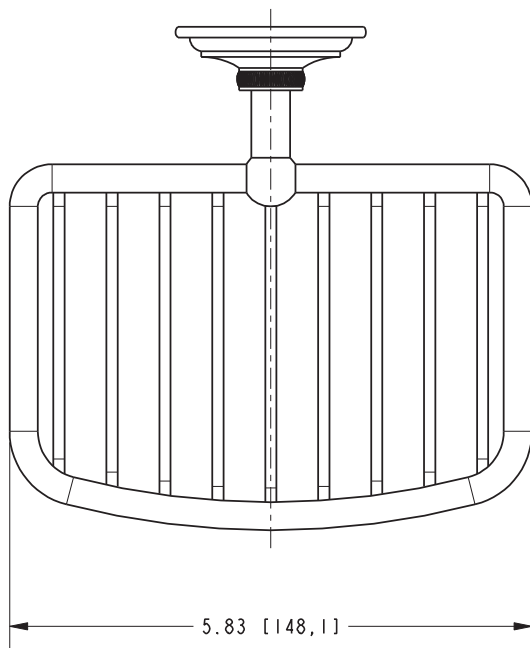
Specified Model

Model	Description	Colors Finishes
26550	Soap Basket	<input type="checkbox"/> PC <input type="checkbox"/> PN <input type="checkbox"/> SN

Product Specification: Add "Color / Finish" Suffix to Model Number Below

The Basket shall be of solid brass construction. Basket Shelf shall incorporate a projected depth of approximately 5-5/8" from the wall and a running length of approximately 5-13/16". Basket shall be Ginger Model 26550/____.

26550



London Terrace Basket 26550

Page 2 of 2 Spec_26550_c_12.21
EN-4418

GINGER

t: 949.417.5207 | www.gingerco.com
©2021 Brasstech, Inc.