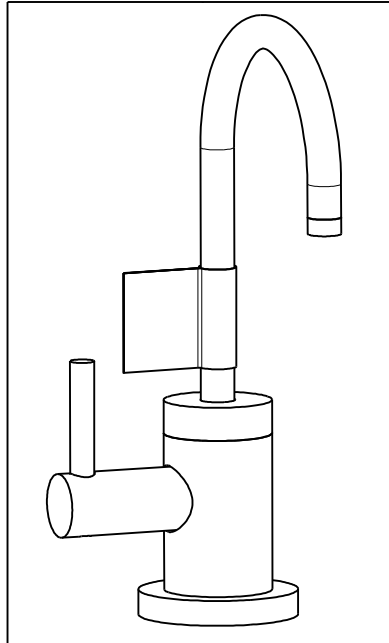


NOTES:

1. TO INSPECT ASSEMBLY, FOLLOW FIRST ARTICLE AND IN PROCESS INSPECTION SHEET.
2. INSTALLATION TORQUE: 10-14 LB-IN
3. CUT AND SHORTEN O-RING BY .13" TO .20" IN LENGTH BEFORE INSTALLING.
4. SLIT O-RING BEFORE INSTALLING.
5. APPLY LOCTITE 242.
6. CONNECT WHITE AND RED TUBINGS TOGETHER AND WATER TEST WHOLE UNIT.
7. BAG 92194 IN A SEPARATE BAG.
8. REWORK CARTRIDGE ASSY IF THE HANDLE DOES NOT RETURN TO THE 'OFF' POSITION AUTOMATICALLY AFTER WATER TESTING.
9. INSTALLATION TORQUE: 8-14 LB-FT.
10. INSTALLATION TORQUE: 78 LB-IN +/-6 LB-IN.
11. LUBRICATE SPRING WITH DOW CORNING III SILICONE COMPOUND.
12. APPLY LIGHT FILM OF DOW CORNING III SILICONE COMPOUND.



BILL OF MATERIAL (CURRENT LEVEL)

ITEM	PT/ASSY	DESCRIPTION	TYPE	QTY.
1	1-393	1-1/8 18 UNEF MOUNTING KIT	ASSEMBLY	1
2	1-431	RED SUPPLY LINE	ASSEMBLY	1
3	1-432	BLUE SUPPLY LINE	ASSEMBLY	1
4	1-433	GREY SUPPLY LINE	ASSEMBLY	1
5	5-052	SPOUT ASM	ASSEMBLY	1
6	5-067	3/8 SELF CLOSING CART. ASM.	ASSEMBLY	1
7	10831	ESCUTCHEON (DECK SPOUT)	PART	1
8	13070	RETAINER PLATE	PART	1
9	13289	NIPPLE	PART	1
10	13604	WATER DISP. BODY HOT (CONT.)	PART	1
11	13675	WATER DISP BODY CAP (CONT.)	PART	1
12	13676	WATER DISP HANDLE (CONT.)	PART	1
13	13788	WATER DISP LEVER (CONT.)	PART	1
14	91017	O-RING #2-012	PART	2
15	91023	O-RING, #2- 019, EPDM, 65-75 DURO, NSF 61	PART	1
16	91382	O-RING, #2- 012, TEFLON,	PART	1
17	91383	O-RING, #2- 014, TEFLON, NSF 61	PART	1
18	91753	O-RING, # 2-136, EP, 50 DURO - GREY	PART	1
19	92016	SCRW, 10-24 X 3/4 SKT HD FLT PT SS	PART	1
20	92017	SCRW, 1/4-20 X 3/16 SKT HD CUP PT SS	PART	1
21	92194	COUPLING, 3/8" X 1/4"	PART	1
22	98043	TAG LABEL, HOT WATER WARNING	PART	1

-	R	EN-4187	10/25/22	J.M.
-	P	EN-4300jj	07/22/21	R.S.
-	N	EN-3634A	11/26/19	C.G.
-	M	EN-3941	08/28/19	C.G.
-	L	EN-3862	05/07/19	C.G.
-	K	EN-3558o	01/02/19	V.V.
-	J	EN-3311	05/11/17	J.A
-	H	EN-2601	09/16/13	-
-	G	EN-2528	05/08/13	-
-	F	EN-2235	07/30/12	-
-	E	EN-1675A	12/14/10	-
-	D	EN-1300	10/26/09	-
-	C	EO-0936	01/29/08	-
-	B	EO-0707	05/24/06	-
-	A	EO-0461	12/14/04	-
-	-	EO-0441	11/19/04	-
ZONE	REV	DESCRIPTION	DATE	APPROVED

COPYRIGHT 2005 BRASSTECH, INC. THESE DRAWINGS AND THE DESIGNS DEPICTED HEREIN ARE THE PROPRIETARY PROPERTY OF BRASSTECH. ANY USE OR REPRODUCTION IS SUBJECT TO THE EXPRESS APPROVAL OF BRASSTECH. UNAUTHORIZED USE IS STRICTLY PROHIBITED. ALL RIGHTS RESERVED.

TESTING	-	-	-
ASSEMBLY	-	-	-
PLATING	-	-	-
POLISHING	-	NEXT ASSY	USED ON
MACHINING	-	APPLICATION	
TOOLING FIXTURE #		REMOVE ALL BURRS AND SHARP EDGES	

UNITS ARE: INCHES [MM]
TOLERANCES ARE:
FRACTIONS DECIMALS ANGLES
±1/16" .X ±.1 [2.5] ±1°
.XX ±.06 [1.5]

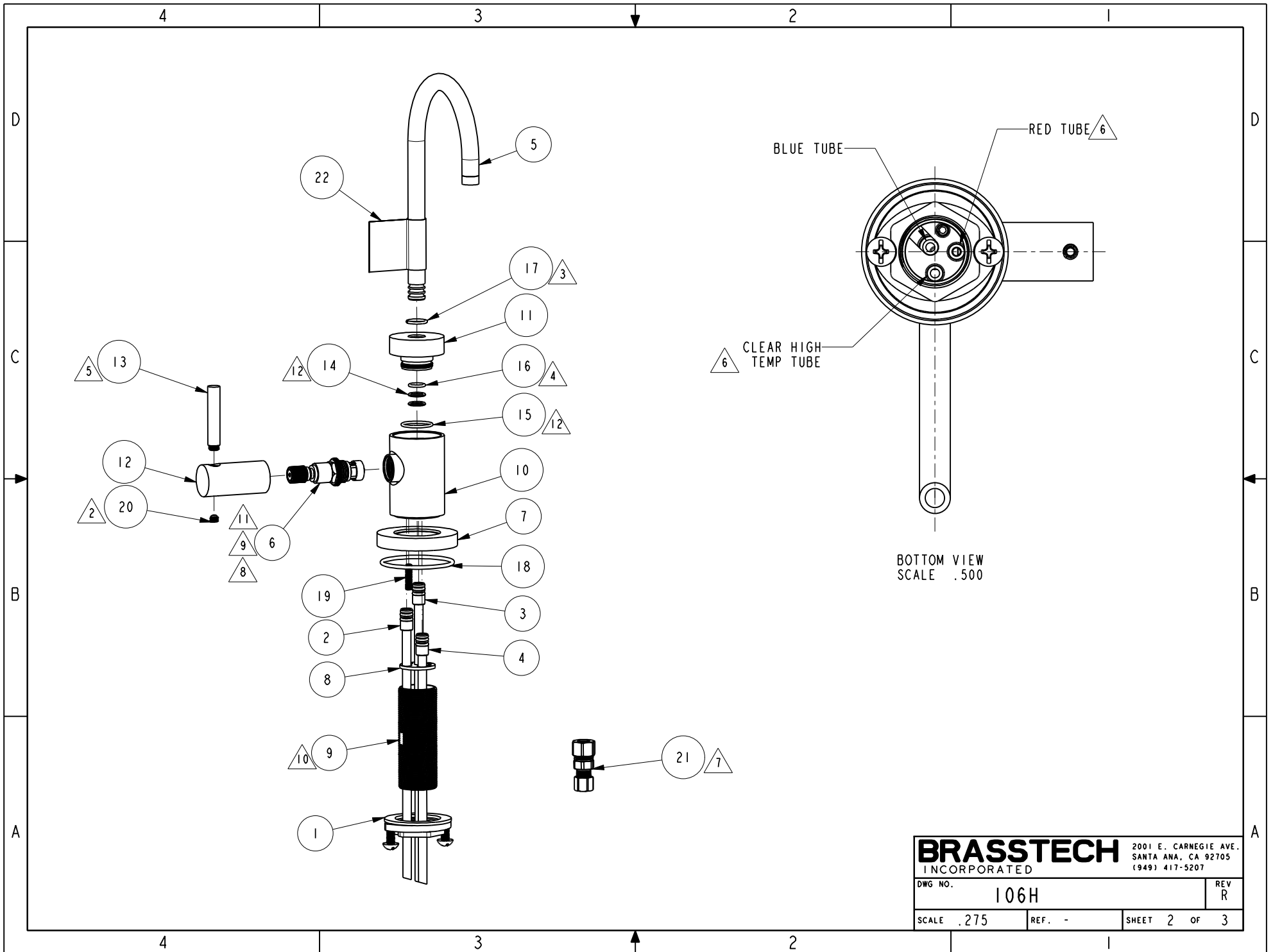
(X.XXX) DENOTES CRITICAL DIMS.
ALL THREADS ARE CRITICAL

DRAWN	JINSON	10/25/22
CHECKED	G.B.	10/25/22
APPROVED	J.M.	10/25/22

BRASSTECH 2001 CARNEGIE AVE.
INCORPORATED SANTA ANA, CA 92705
(949) 417-5207

HOT WATER DISP COMP

DWG NO.	106H	REV	R
SCALE	.350	REF.	-
SHEET	1	OF	3



BRASSTECH		2001 E. CARNEGIE AVE. SANTA ANA, CA 92705 (949) 417-5207	
DWG NO.	106H	REV	R
SCALE .275	REF. -	SHEET 2	OF 3

