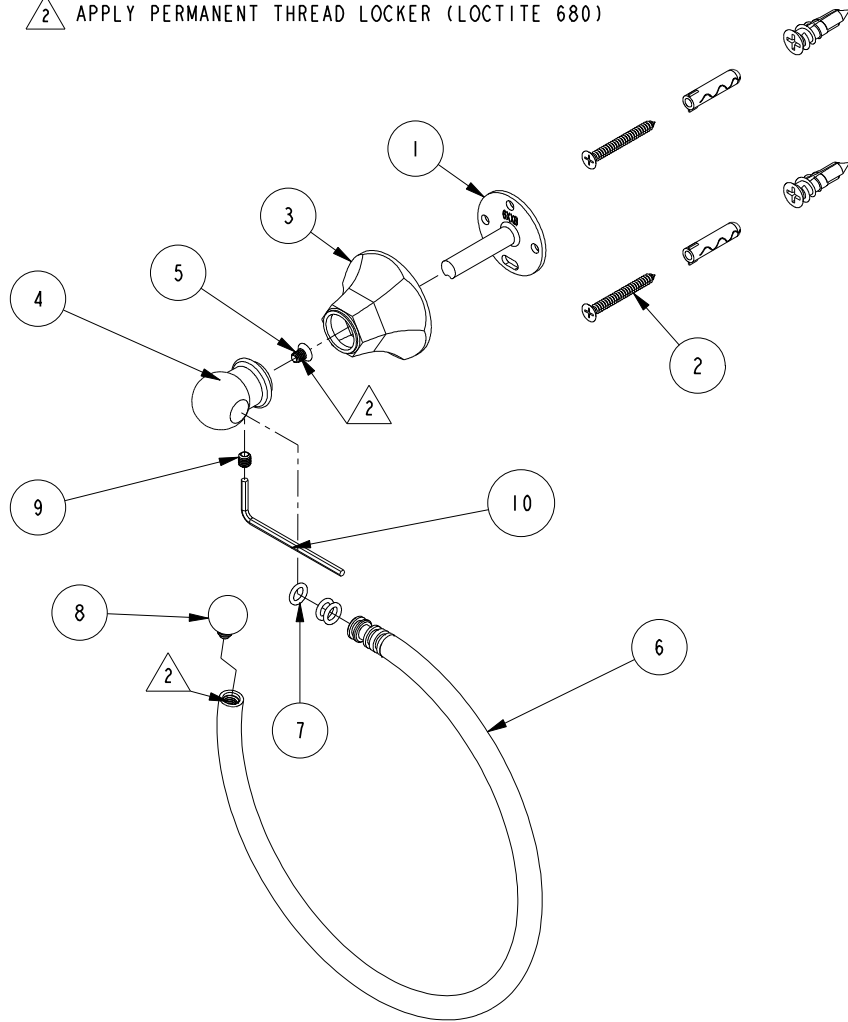


NOTES:

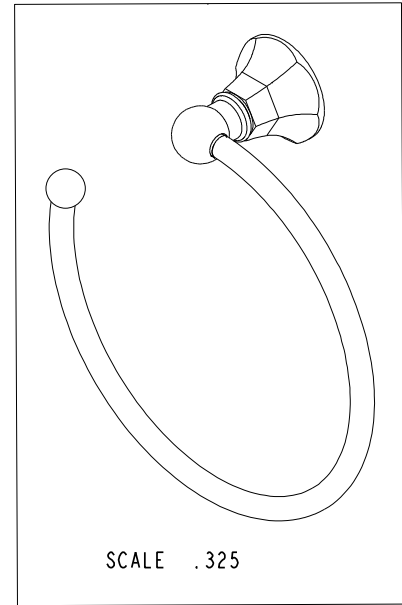
1. TO INSPECT ASSEMBLY, FOLLOW FIRST ARTICLE AND IN PROCESS INSPECTION SHEET.

2 APPLY PERMANENT THREAD LOCKER (LOCTITE 680)



BILL OF MATERIAL (CURRENT LEVEL)

| ITEM | PT/ASSY | DESCRIPTION | TYPE | QTY. |
|------|---------|---|----------|------|
| 1 | 6XXB | MOUNTING BRACKET | PART | 1 |
| 2 | 1-206 | HARDWARE PACK | ASSEMBLY | 1 |
| 3 | 600B | HEX CONE - SMALL | PART | 1 |
| 4 | 40814 | POST - OPEN TOWEL RING | PART | 1 |
| 5 | 92820 | SCRW, 8-32 X 1/4 PHL FT HD SS | PART | 1 |
| 6 | 7-759 | TOWEL RING | ASSEMBLY | 1 |
| 7 | 91049 | O-RING, #2- 010, EPDM, 65-75 DURO, NSF 61 | PART | 3 |
| 8 | 40754 | FINIAL | PART | 1 |
| 9 | 92308 | SCRW, M5 X 5 SKT HD CUP PT W/ SELF LOC SS | PART | 1 |
| 10 | 10888 | HEX KEY, 2.5MM ALLOY STEEL | PART | 1 |



| | | | |
|-------------------|----------------------------------|-------------|---------|
| TESTING | - | - | - |
| ASSEMBLY | - | - | - |
| PLATING | - | - | - |
| POLISHING | - | NEXT ASSY | USED ON |
| MACHINING | - | APPLICATION | |
| TOOLING FIXTURE # | REMOVE ALL BURRS AND SHARP EDGES | | |

UNITS ARE: INCHES [MM]
 TOLERANCES ARE:
 FRACTIONS DECIMALS ANGLES
 ±1/16" .X ±.1 [2.5] ±1°
 .XX ±.06 [1.5]
 (X.XXX) DENOTES CRITICAL DIMS.
 ALL THREADS ARE CRITICAL

DRAWN R.S. 08/15/19
 CHECKED J.M. 08/15/19
 APPROVED J.M. 08/15/19

BRASSTECH 2001 CARNEGIE AVE.
 INCORPORATED SANTA ANA, CA 92705
 (949) 417-5207

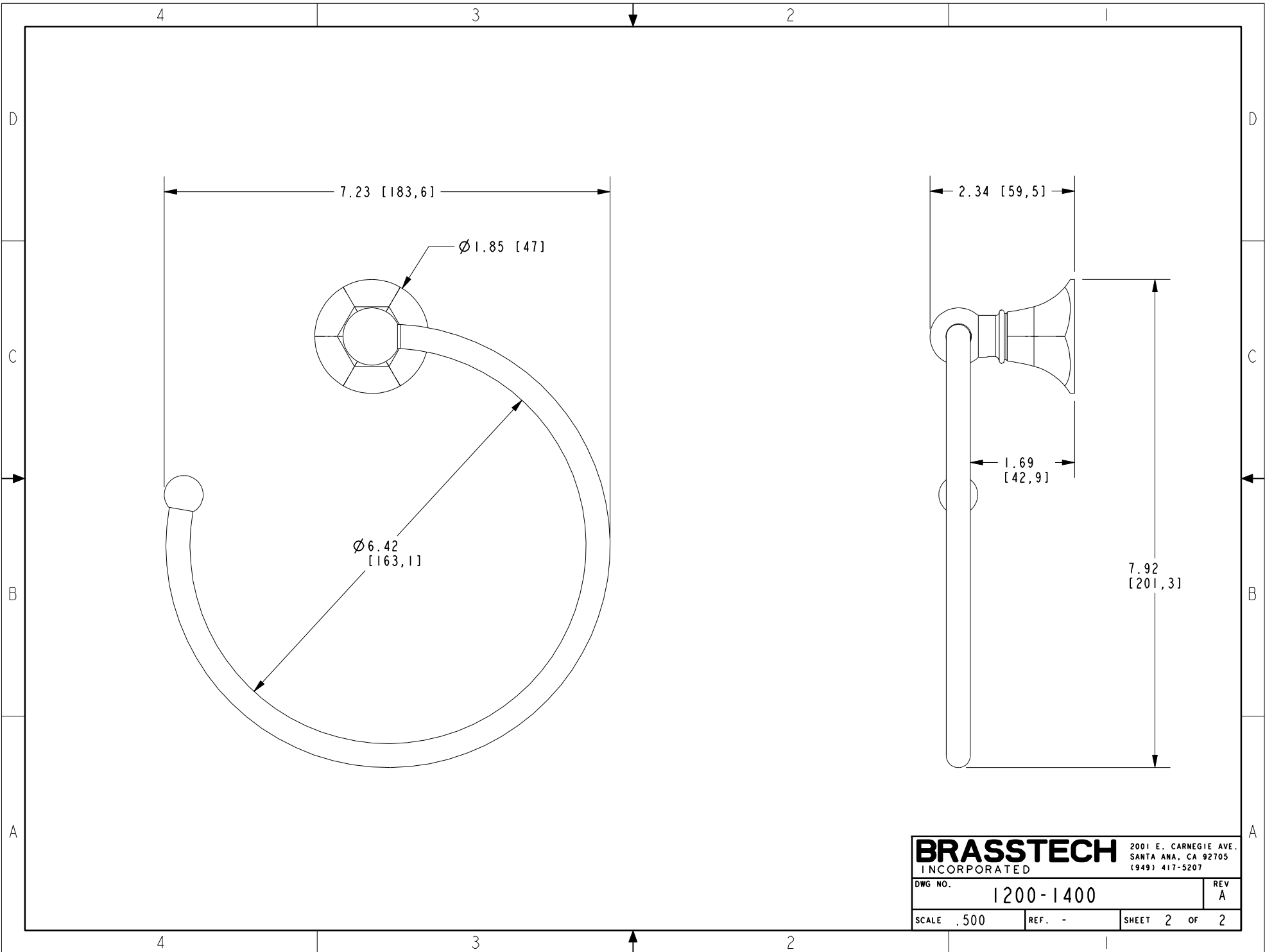
OPEN TOWEL RING

DWG NO. 1200-1400 REV A

SCALE .325 REF. - SHEET 1 OF 2

COPYRIGHT 2005 BRASSTECH, INC.
 THESE DRAWINGS AND THE DESIGNS
 DEPICTED HEREIN ARE THE PROPRIETARY
 PROPERTY OF BRASSTECH. ANY USE
 OR REPRODUCTION IS SUBJECT TO
 THE EXPRESS APPROVAL OF BRASSTECH.
 UNAUTHORIZED USE IS STRICTLY
 PROHIBITED. ALL RIGHTS RESERVED.

| - | A | EN-4358 | 02/17/22 | R.S. |
|------|-----|-------------|----------|----------|
| - | - | EN-3913 | 08/15/19 | J.M. |
| ZONE | REV | DESCRIPTION | DATE | APPROVED |



| | | | |
|------------------|-----------|--|--------|
| BRASSTECH | | 2001 E. CARNEGIE AVE. SANTA ANA, CA 92705 (949) 417-5207 | |
| DWG NO. | 1200-1400 | REV | A |
| SCALE | .500 | REF. | - |
| | | SHEET | 2 OF 2 |