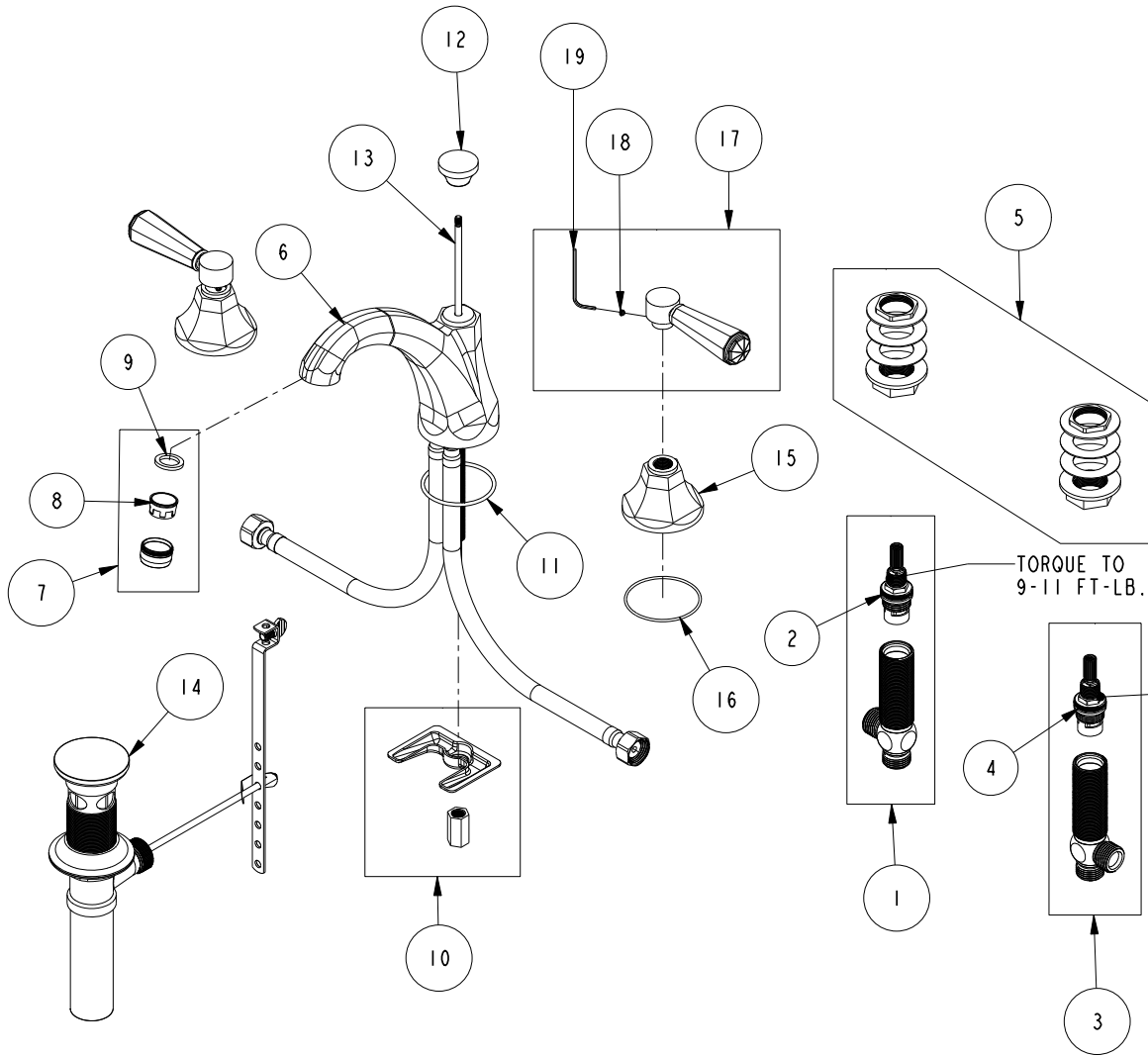


REPLACEMENT PARTS



ITEM	PT/ASSY	SPECIFY FINISH	DESCRIPTION
1	1-527		W/S CART/BODY ASM (HOT)
2	1-002		W/S CARTRIDGE - HOT
3	1-526		W/S CART/BODY ASM (COLD)
4	1-001		W/S CARTRIDGE - COLD
5	1-027		WIDE SPREAD MOUNTING HARDWARE
6	3-539	YES	SPOUT ASM
7	2-627	YES	AERATOR ASM
8	12404		AERATOR INSERT, STD SIZE, 1.2 GPM
9	91014		WSHR, .59 ID X .84 OD X .095 THK, FLT, RUBBER NSF 61
10	1-514		SPOUT MOUNTING KIT ASM
11	91753		O-RING, # 2-136, EP, 50 DURO - GREY
12	10961	YES	SMOOTH POP - UP KNOB
13	10288	YES	3/16" POP UP ROD
14	325	YES	POP UP ASSEMBLY
15	10960	YES	HEX ESCUTCHEON
16	91754		O-RING, #2-034, EPDM, 50 DURO - GREY
17	2-876	YES	CRYSTAL HANDLE LEVER ASM
18	92000		SCREW 8 - 32 X 1/8 SS
19	10192		HEX KEY TOOL, #8 5/64

TORQUE TO 9-11 FT-LB.

TORQUE TO 9-11 FT-LB.

**WIDESPREAD FAUCET
1230C**

REV E EN-4728 11/06/23 APPROVED RS

NEWPORT BRASS.

t: 949.417.5207 | www.newportbrass.com