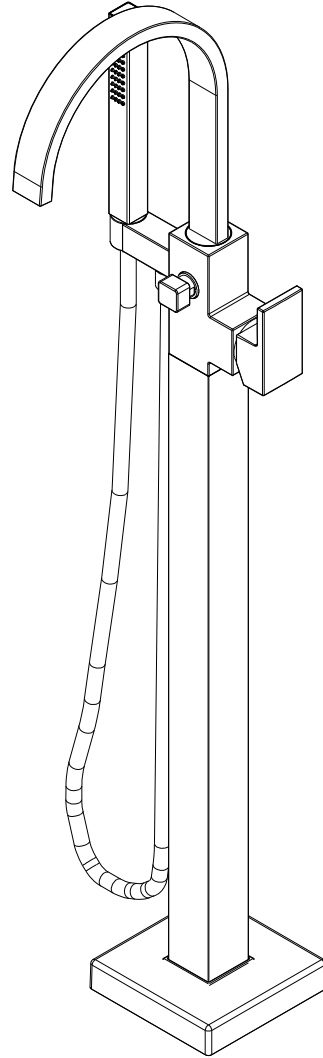


NOTES:

- (N1) 1. TO INSPECT ASSEMBLY, FOLLOW FIRST ARTICLE AND IN PROCESS INSPECTION SHEET.



BILL OF MATERIAL (CURRENT LEVEL)

ITEM	PT/ASSY	DESCRIPTION	TYPE	QTY.
1	20-309	BODY ASM	ASSEMBLY	1
2	12174		PART	1
3	2-932	SPOUT ASM	ASSEMBLY	1
4	12175	HAND SHWR HOLDER	PART	1
5	92821	SCREW	PART	1
6	12179	DIVERTER BUTTON	PART	1
7	1-292	CARTRIDGE	ASSEMBLY	1
8	12180	RETAINER CART. NUT	PART	1
9	12181	CAP, CARTRIDGE	PART	1
10	13073	HANDLE	PART	1
11	92308	SCRW, M5 X 5 SKT HD CUP PT SS	PART	3
12	92827	SCREW	PART	2
13	12184	WATER SUPPLY HOSE	ASSEMBLY	2
14	12257	1/2 X 3/4 NPSM THD ADAPTER	PART	2
15	283-102	SQUARE WAND HANDSHOWER	ASSEMBLY	1
16	12189	ADAPTER	PART	1
17	91017	O-RING, #2- 012, EPDM, 65-75 DURO, NSF 61	PART	1
18	20-259	DIVERTER ASM	ASSEMBLY	1
19	20-260	DIVERTER ASM	ASSEMBLY	1
20	92070	SCRW, #14 X 2 SLT FLT HD SS	PART	3
21	91368	WALL ANCHOR PLASTIC, 12-1/4	PART	3
22	10159	HEX KEY, 3/32 ALLOY STEEL	PART	1
23	3-461	BASE COVER ASM	ASSEMBLY	1
24	284	SHOWER HOSE	PART	1
25	98044	LABEL - HOT	PART	1
26	98155	WARNING LABEL	PART	1

-	N	EN-4522	06/16/22	R.S.
-	M	EN-4327	04/05/21	V.V.
-	L	EN-3676	03/11/20	J.M.
-	K	EN-3511	01/15/18	J.M.
-	J	EN-3241	9/27/17	J.A.
-	H	EN-3209	12/01/16	V.V.
-	G	EN-2895	06/08/15	V.V.
-	F	EN-2866	03/30/15	V.V.
ZONE	REV	DESCRIPTION	DATE	APPROVED

COPYRIGHT 2005 BRASSTECH, INC. THESE DRAWINGS AND THE DESIGNS DEPICTED HEREIN ARE THE PROPRIETARY PROPERTY OF BRASSTECH. ANY USE OR REPRODUCTION IS SUBJECT TO THE EXPRESS APPROVAL OF BRASSTECH. UNAUTHORIZED USE IS STRICTLY PROHIBITED. ALL RIGHTS RESERVED.

TESTING	-	-	-
ASSEMBLY	-	-	-
PLATING	-	-	-
POLISHING	-	NEXT ASSY	USED ON
MACHINING	-	APPLICATION	
TOOLING FIXTURE #	REMOVE ALL BURRS AND SHARP EDGES		

UNITS ARE: INCHES [MM]		
TOLERANCES ARE:		
FRACTIONS DECIMALS	ANGLES	
±1/16"	±1°	
.X ±.1 [2.5]		
.XX ±.06 [1.5]		
(X.XXX) DENOTES CRITICAL DIMS. ALL THREADS ARE CRITICAL		
DRAWN	H. LE	08/16/13
CHECKED	V. VU	08/16/13
APPROVED	V. VU	08/16/13

BRASSTECH 2001 CARNEGIE AVE.
INCORPORATED SANTA ANA, CA 92705
(949) 417-5207

TUB FILLER, FREE STANDING-SECANT

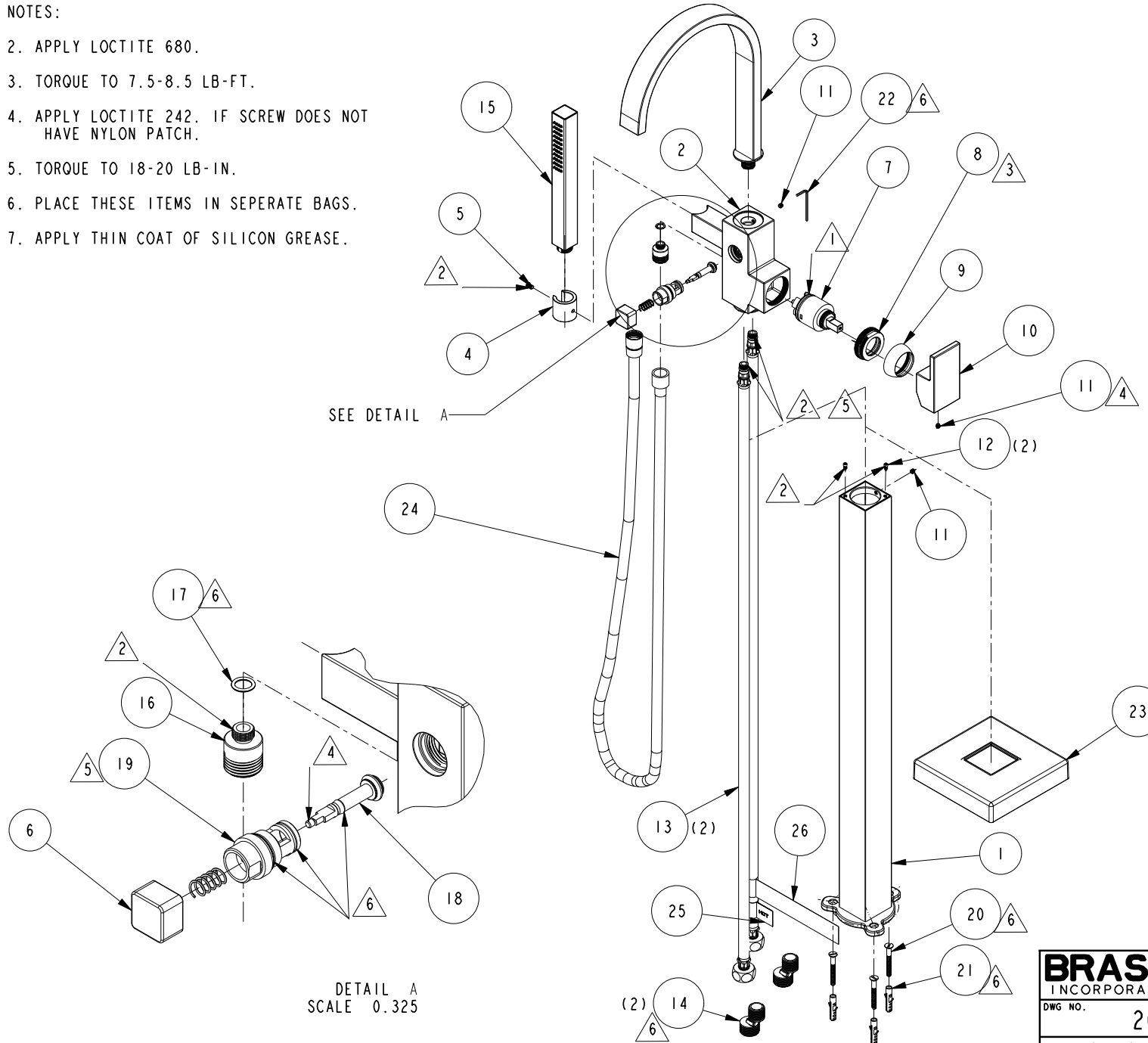
DWG NO.	2040-4261	REV	N
SCALE	0.150	REF.	-
SHEET		OF	4

NOTES:

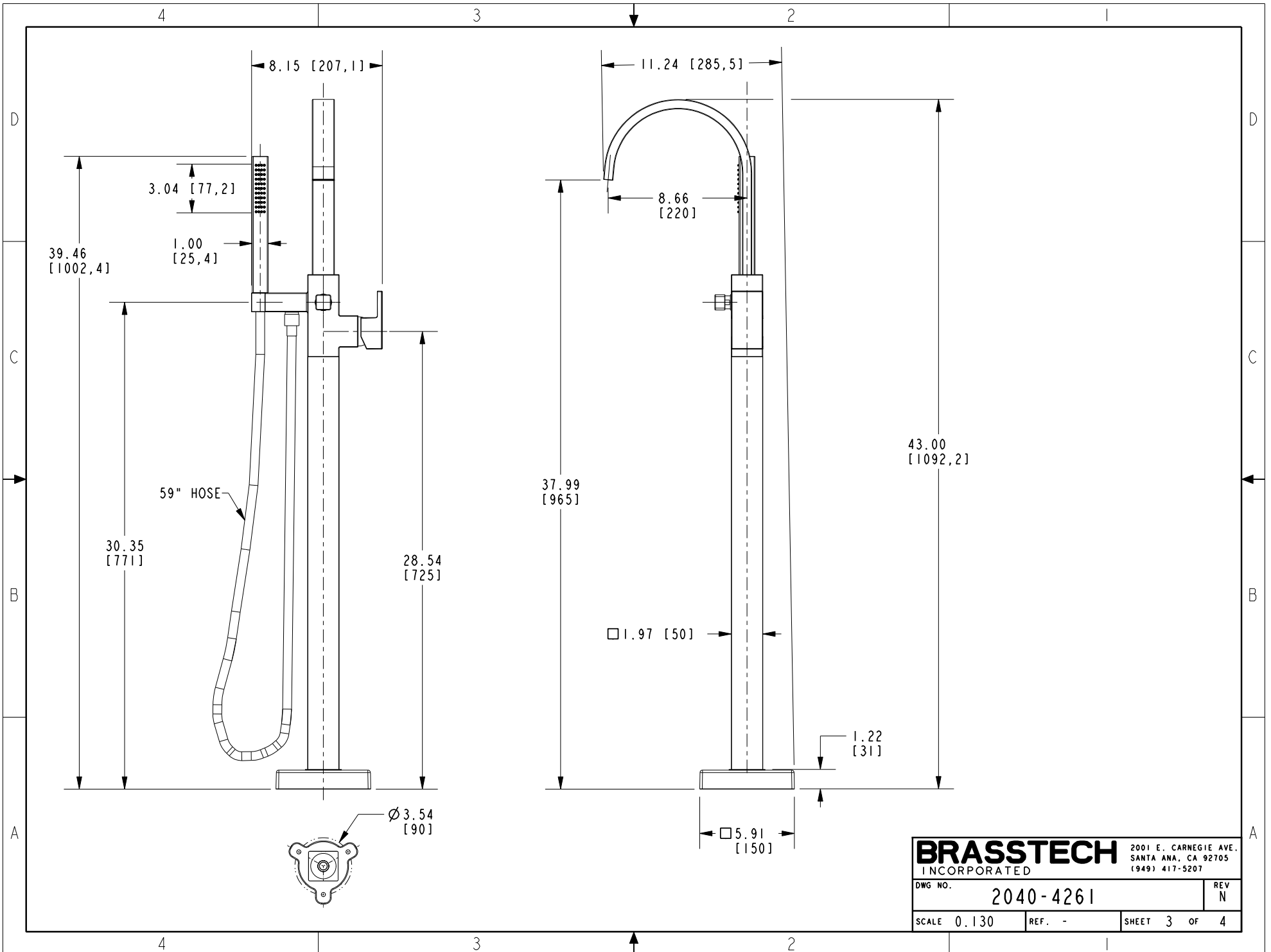
2. APPLY LOCTITE 680.
3. TORQUE TO 7.5-8.5 LB-FT.
4. APPLY LOCTITE 242. IF SCREW DOES NOT HAVE NYLON PATCH.
5. TORQUE TO 18-20 LB-IN.
6. PLACE THESE ITEMS IN SEPERATE BAGS.
7. APPLY THIN COAT OF SILICON GREASE.

SEE DETAIL A

DETAIL A
SCALE 0.325



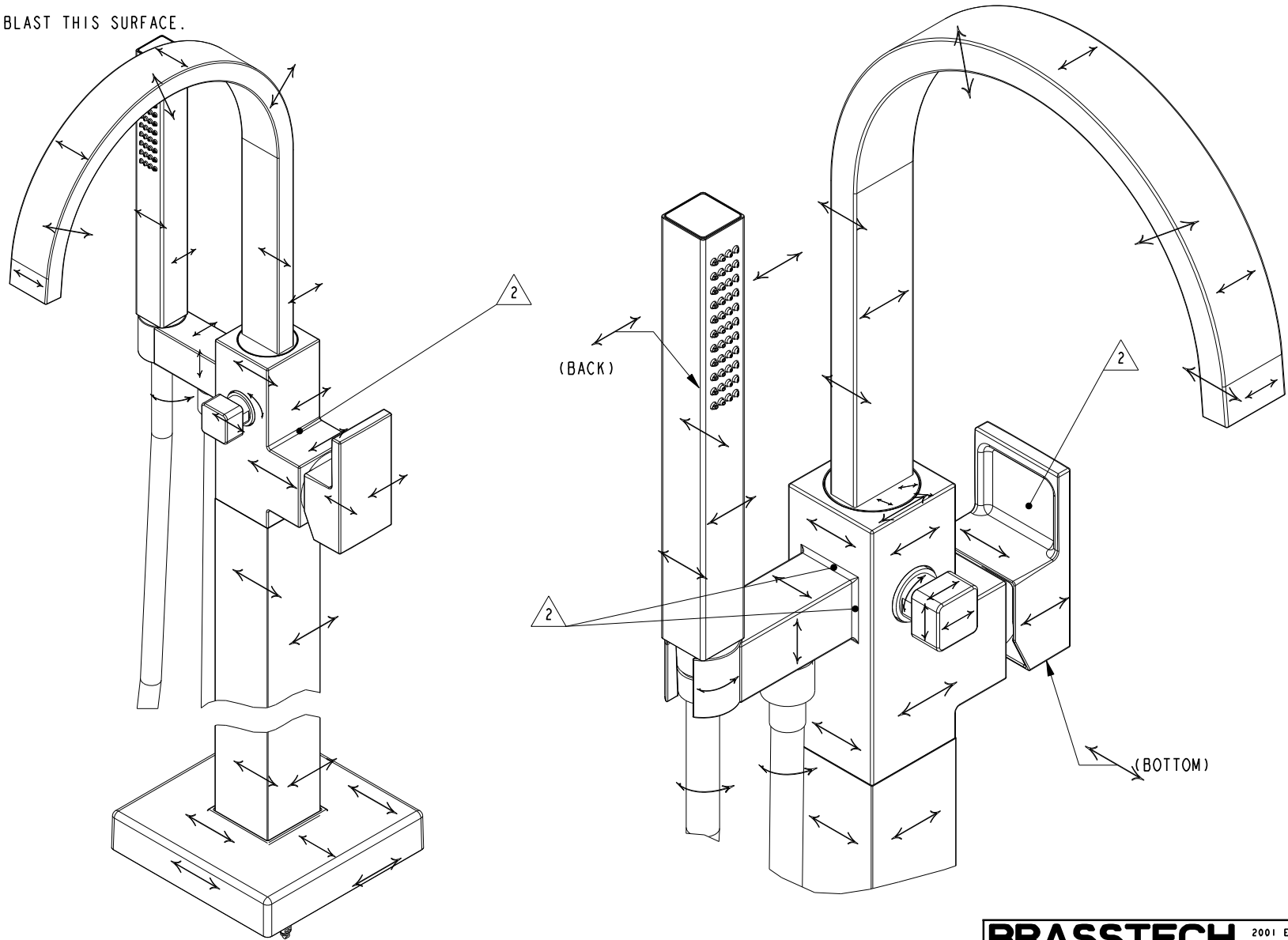
BRASSTECH		2001 E. CARNEGIE AVE. SANTA ANA, CA 92705 (949) 417-5207	
DWG NO.	2040-4261	REV	N
SCALE	0.140	REF.	-
		SHEET	2 OF 4



NOTES:

1. \longleftrightarrow INDICATES STROKE DIRECTION FOR SATIN FINISHES ONLY.

2. \triangle SAND BLAST THIS SURFACE.



BRASSTECH		2001 E. CARNEGIE AVE. SANTA ANA, CA 92705 (949) 417-5207	
DWG NO.	2040-4261	REV	N
SCALE	0.140	REF.	-
SHEET 4		OF 4	