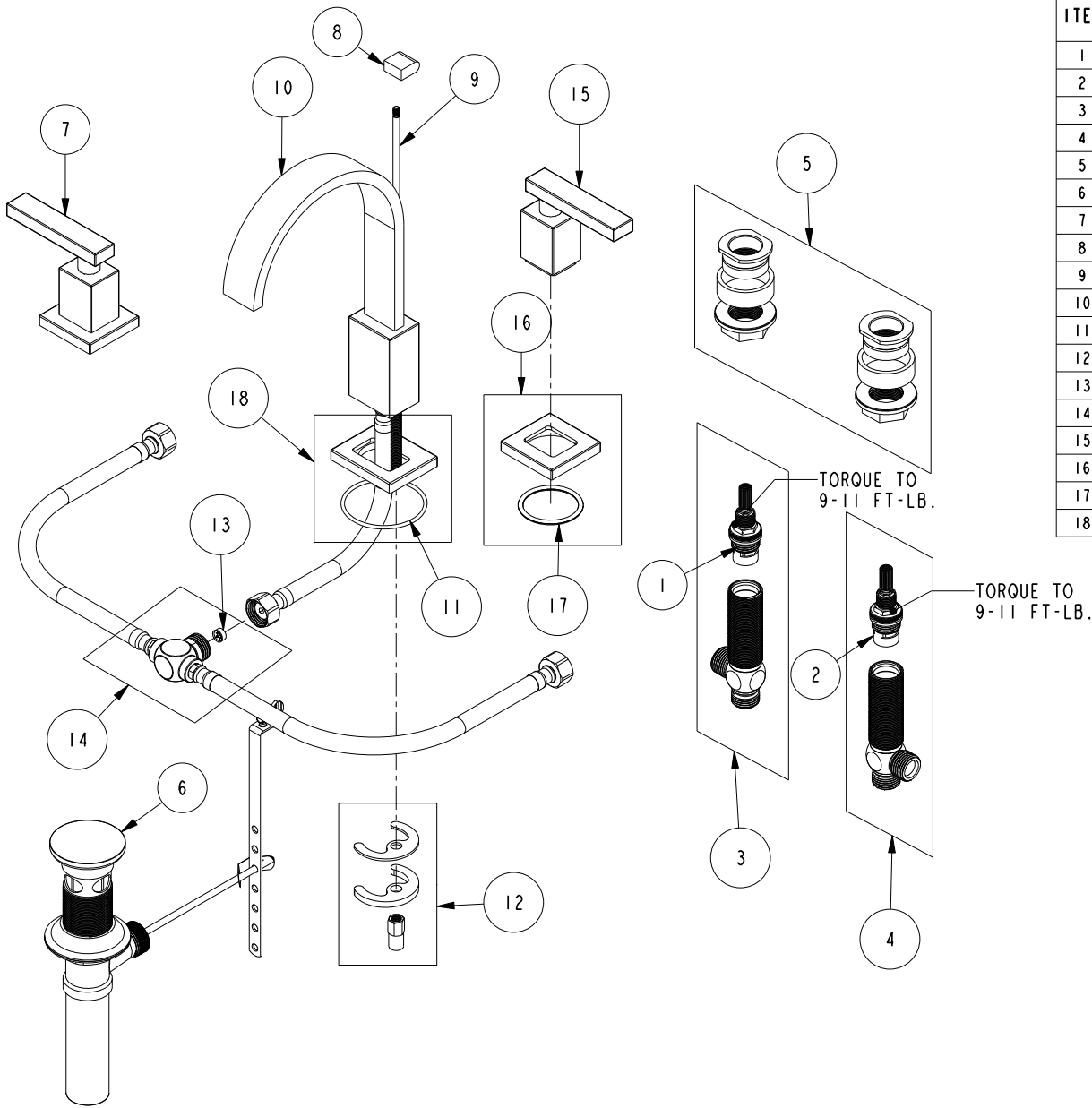


REPLACEMENT PARTS



ITEM	PT/ASSY	SPECIFY FINISH	DESCRIPTION
1	1-001		W/S CARTRIDGE - COLD
2	1-002		W/S CARTRIDGE - HOT
3	1-526		W/S CART/BODY ASM (COLD)
4	1-527		W/S CART/BODY ASM (HOT)
5	1-226		WIDESPREAD MOUNTING HARDWARE
6	325	YES	POP UP ASSEMBLY
7	3-368	YES	HANDLE AND ESCUTCHEON ASSEMBLY
8	30358	YES	POP UP KNOB
9	10288	YES	3/16" POP UP ROD
10	3-434	YES	W/S SPOUT ASSEMBLY
11	91774		O-RING, #2-141, EPDM, 50 DURO - GREY
12	1-491		SPOUT MOUNTING KIT
13	12400		FLOW REGULATOR, 1.2 GPM, PINK
14	1-654		FLOW REGULATOR ASM, 1.2 GPM
15	2-612	YES	HANDLE ASSEMBLY
16	2-936	YES	HANDLE ESCUTCHEON ASM
17	91748		O-RING, #2-223, EP, 50 DURO - GREY
18	20-743	YES	ESCUTCHEON ASM

W/S FAUCET
2040

REV J EN-4734 11/09/23 APPROVED R.S.

NEWPORT BRASS.

t: 949.417.5207 | www.newportbrass.com