

NOTES:

1. TO INSPECT ASSEMBLY, FOLLOW FIRST ARTICLE AND IN PROCESS INSPECTION SHEET.

2 APPLY A MINIMUM OF THREE LAYERS OF TEFLON TAPE.

3 TORQUE TO 80-85 IN-LB

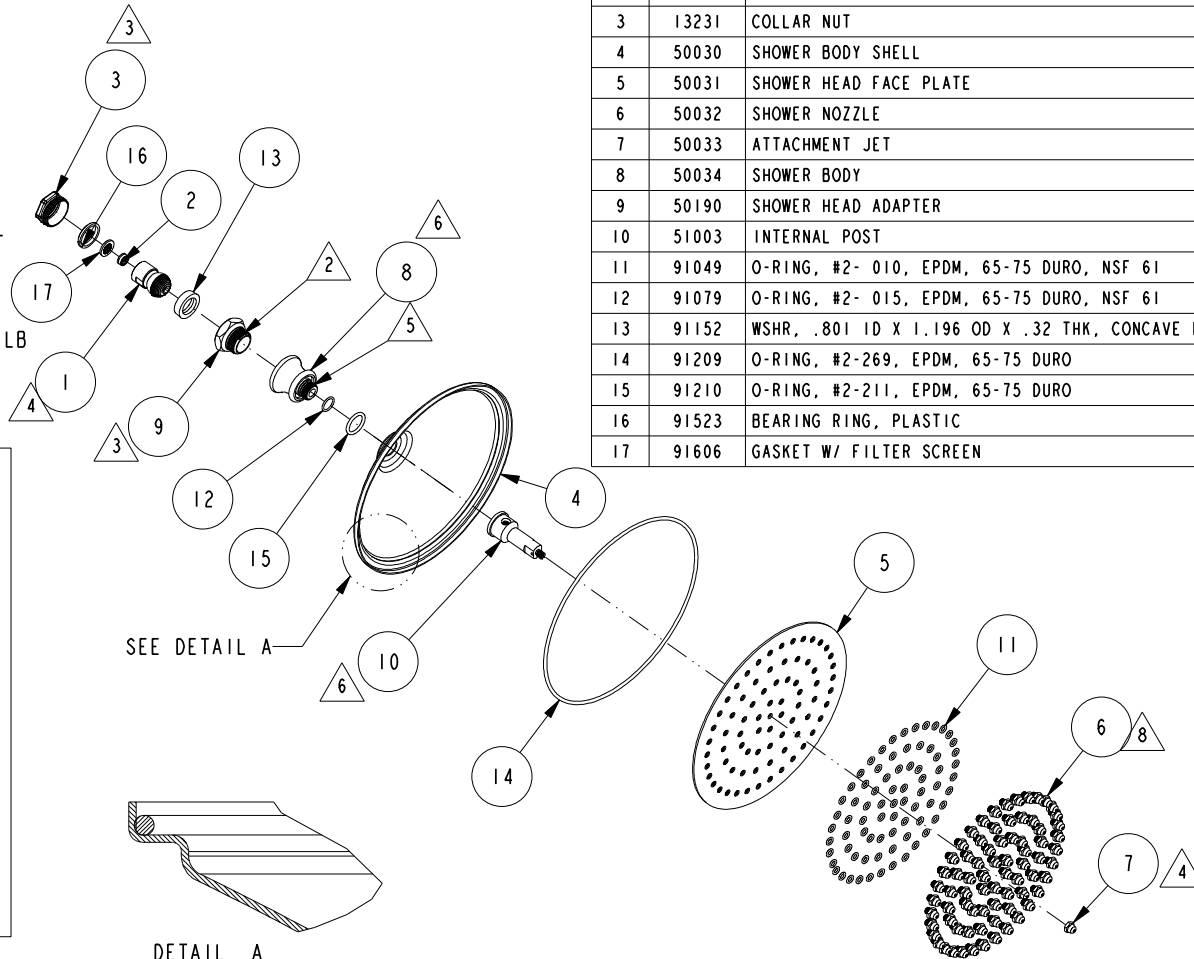
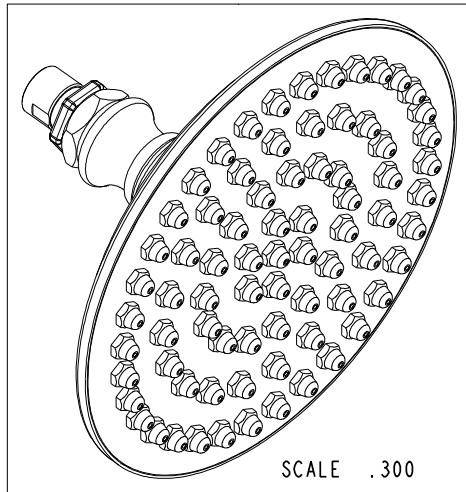
4 TORQUE 22-25 IN-LB.

5 APPLY LOCTITE 680.

6 APPLY 20-25 FT-LB TO TIGHTEN ITEMS #8 & #10

(N7) 7 USE T-0019 WITH T-0018 TO PERFORM FORCE TEST. FORCT TEST INDICATOR MUST REACH 4 LB OR GREATOR TO PASS.

8 TORQUE TO 12.5 IN-LB +/- 2 IN-LB



DETAIL A
SCALE 0.750

BILL OF MATERIAL (CURRENT LEVEL)

ITEM	PT/ASSY	DESCRIPTION	TYPE	QTY.
1	20-471	PIVOT BALL ASSY	ASSEMBLY	1
2	12833	FLOW REGULATOR, 1.8 GPM MAX	PART	1
3	13231	COLLAR NUT	PART	1
4	50030	SHOWER BODY SHELL	PART	1
5	50031	SHOWER HEAD FACE PLATE	PART	1
6	50032	SHOWER NOZZLE	PART	75
7	50033	ATTACHMENT JET	PART	1
8	50034	SHOWER BODY	PART	1
9	50190	SHOWER HEAD ADAPTER	PART	1
10	51003	INTERNAL POST	PART	1
11	91049	O-RING, #2- 010, EPDM, 65-75 DURO, NSF 61	PART	76
12	91079	O-RING, #2- 015, EPDM, 65-75 DURO, NSF 61	PART	1
13	91152	WSHR, .801 ID X 1.196 OD X .32 THK, CONCAVE PB	PART	1
14	91209	O-RING, #2-269, EPDM, 65-75 DURO	PART	1
15	91210	O-RING, #2-211, EPDM, 65-75 DURO	PART	1
16	91523	BEARING RING, PLASTIC	PART	1
17	91606	GASKET W/ FILTER SCREEN	PART	1

-	N	EN-4300w	03/12/21	R.S.
-	M	EN-3999	10/17/19	C.G.
-	L	EN-3894	07/22/19	C.G.
-	J	EN-3410	12/30/17	C.G.
-	H	EN-3466	11/15/17	J.M.
-	G	EN-3004	02/01/16	J.M.
-	F	EN-2690	01/20/14	-
-	E	EN-1668C	05/24/11	-
ZONE	REV	DESCRIPTION	DATE	APPROVED

COPYRIGHT 2005 BRASSTECH, INC. THESE DRAWINGS AND THE DESIGNS DEPICTED HEREIN ARE THE PROPRIETARY PROPERTY OF BRASSTECH. ANY USE OR REPRODUCTION IS SUBJECT TO THE EXPRESS APPROVAL OF BRASSTECH. UNAUTHORIZED USE IS STRICTLY PROHIBITED. ALL RIGHTS RESERVED.

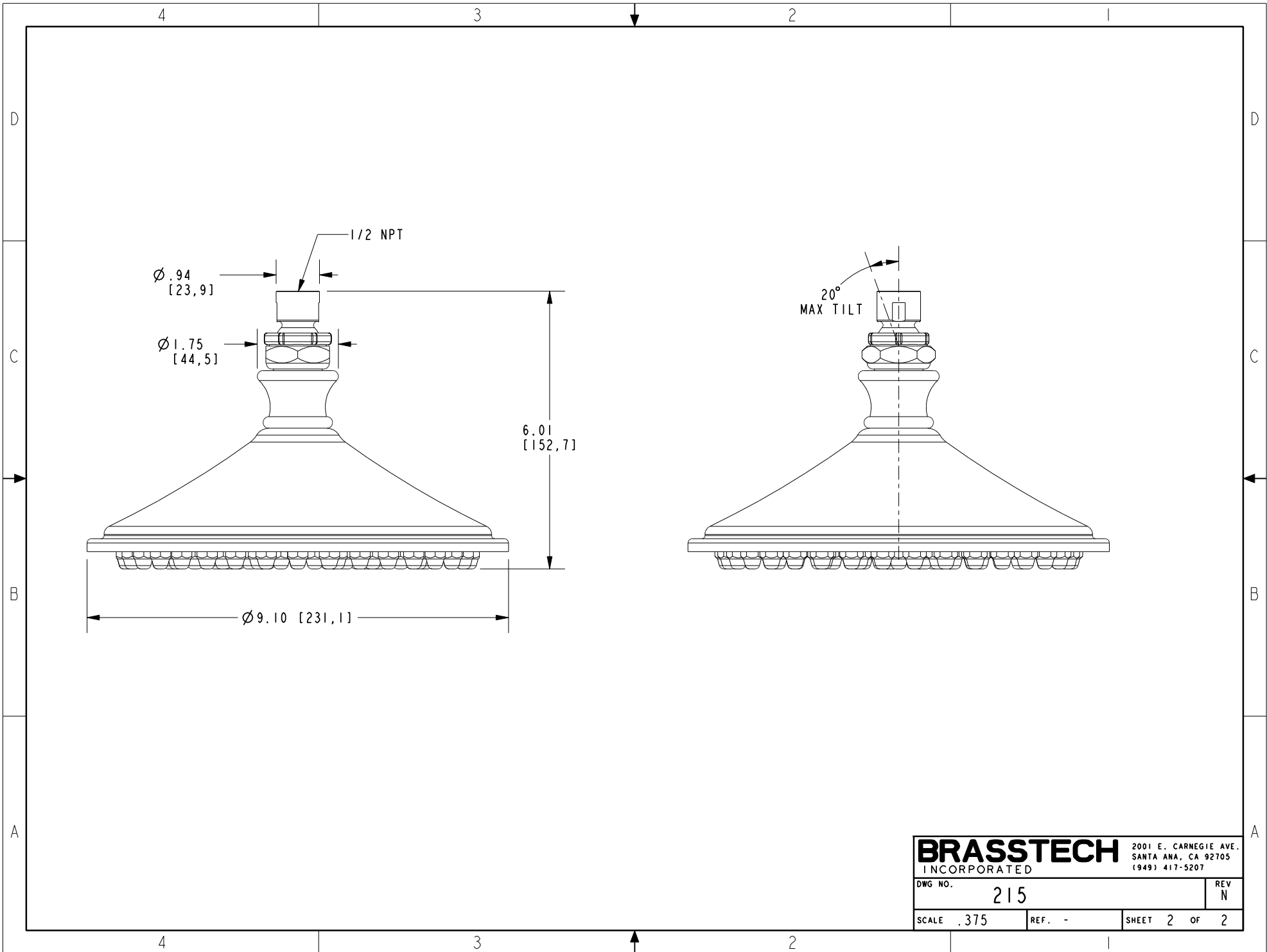
TESTING	-	-	-
ASSEMBLY	-	-	-
PLATING	-	-	-
POLISHING	-	NEXT ASSY	USED ON
MACHINING	-	APPLICATION	
TOOLING FIXTURE #	REMOVE ALL BURRS AND SHARP EDGES		

UNITS ARE: INCHES [MM]		
TOLERANCES ARE:		
FRACTIONS	DECIMALS	ANGLES
±1/16"	.X ±.1 [2.5]	±1°
	.XX ±.06 [1.5]	
(X.XXX) DENOTES CRITICAL DIMS. ALL THREADS ARE CRITICAL		
DRAWN	JINSON	10/17/19
CHECKED	C.G.	10/17/19
APPROVED	C.G.	10/17/19

BRASSTECH 2001 CARNEGIE AVE. SANTA ANA, CA 92705 (949) 417-5207
INCORPORATED

SHOWERHEAD 9 IN. DIA

DWG NO.	215	REV	N
SCALE	.125	REF.	-
SHEET	1	OF	2



BRASSTECH		2001 E. CARNEGIE AVE. SANTA ANA, CA 92705 (949) 417-5207	
DWG NO.	215	REV	N
SCALE	.375	REF.	-
		SHEET	2 OF 2