

4

3

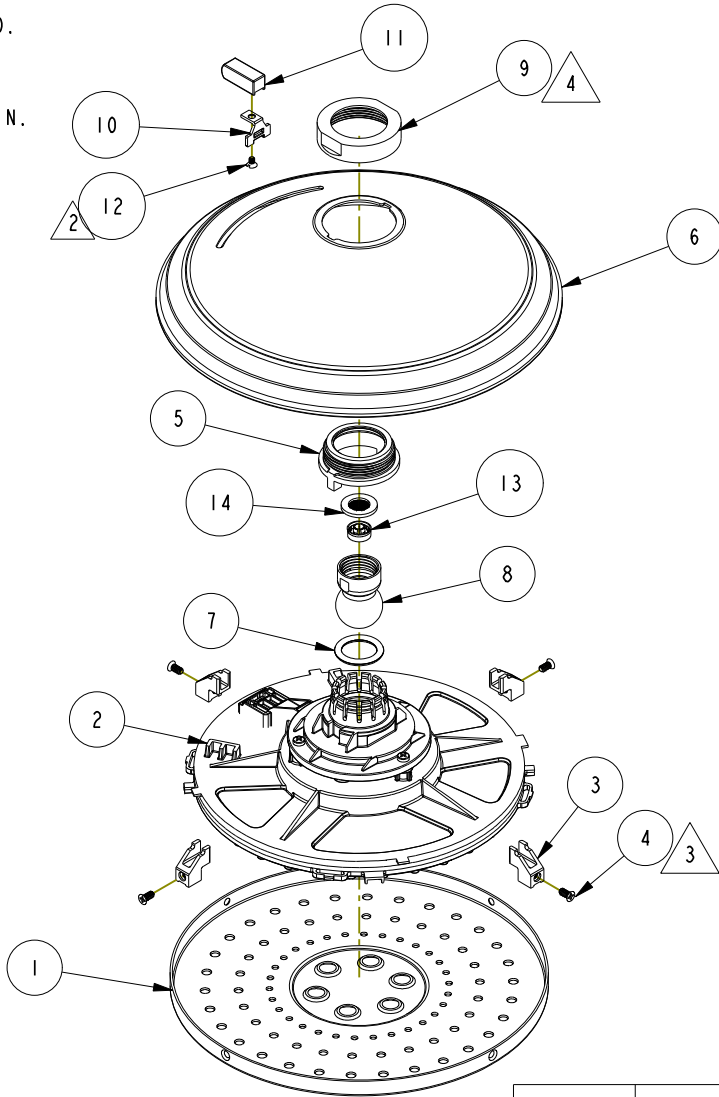
2

1

NOTES:

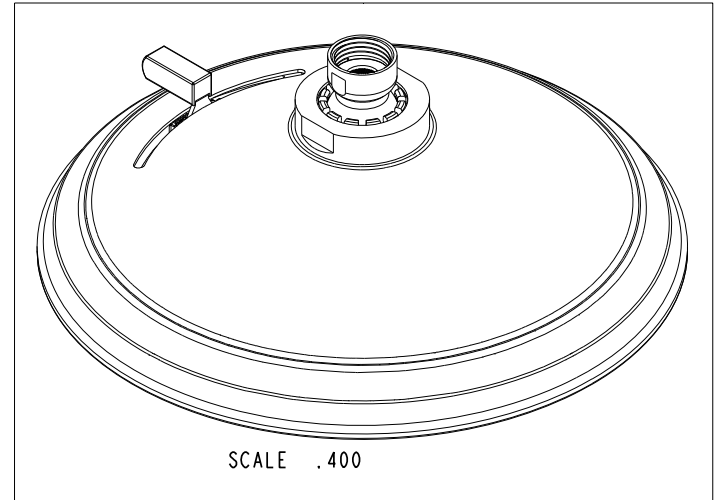
1. TO INSPECT ASSEMBLY, FOLLOW FIRST ARTICLE AND IN PROCESS INSPECTION SHEET.

- 2. APPLY LOCTITE 680.
- 3. TORQUE 6-8 LB-IN.
- 4. TORQUE 65-70 LB-IN.



BILL OF MATERIAL (CURRENT LEVEL)

ITEM	PT/ASSY	DESCRIPTION	TYPE	QTY.
1	12959	FACEPLATE	PART	1
2	1-392	SHOWER HEAD ENGINE	ASSEMBLY	1
3	13201	FACEPLATE TAB	PART	4
4	92895	SCRW, 6-32 X 5/16 FLT HD SS	PART	4
5	12961	COMPRESSION NUT	PART	1
6	12966	SHOWER HEAD SHELL	PART	1
7	91220	O-RING, #2-210, EPDM, 65-75 DURO	PART	1
8	80018	PIVOT BALL	PART	1
9	12963	SHOWER HEAD COLLAR NUT	PART	1
10	12964	LEVER TAB	PART	1
11	12965	LEVER	PART	1
12	92196	SCRW, 4-40 X 3/16 SLT FLT HD SS	PART	1
13	12833	FLOW REGULATOR, 1.8 GPM MAX	PART	1
14	91606	GASKET W/ FILTER SCREEN	PART	1



ZONE	REV	DESCRIPTION	DATE	APPROVED
-	D	EN-4300w	03/16/21	R.S.
-	C	EN-3999	10/17/19	C.G.
-	B	EN-3853	01/08/19	C.G.
-	A	EN-3766	12/06/18	C.G.
-	-	EN-3551	05/18/18	V.V.

COPYRIGHT 2005 BRASSTECH, INC. THESE DRAWINGS AND THE DESIGNS DEPICTED HEREIN ARE THE PROPRIETARY PROPERTY OF BRASSTECH. ANY USE OR REPRODUCTION IS SUBJECT TO THE EXPRESS APPROVAL OF BRASSTECH. UNAUTHORIZED USE IS STRICTLY PROHIBITED. ALL RIGHTS RESERVED.

TESTING	ASSEMBLY	PLATING	POLISHING	MACHINING	TOOLING FIXTURE #
-	-	-	-	-	-
					REMOVE ALL BURRS AND SHARP EDGES

UNITS ARE: INCHES [MM]
TOLERANCES ARE:
FRACTIONS DECIMALS ANGLES
±1/16" .X ±.1 [2.5] ±1°
.XX ±.06 [1.5]

(X.XXX) DENOTES CRITICAL DIMS.
ALL THREADS ARE CRITICAL

DRAWN	MANJUNATH	10/17/19
CHECKED	C.G.	10/17/19
APPROVED	C.G.	10/17/19

BRASSTECH 2001 CARNEGIE AVE. SANTA ANA, CA 92705 (949) 417-5207
INCORPORATED

TRADITIONAL SHOWER HEAD

DWG NO. 2157 REV D

SCALE .250 REF. - SHEET 1 OF 2

4

3

2

1

