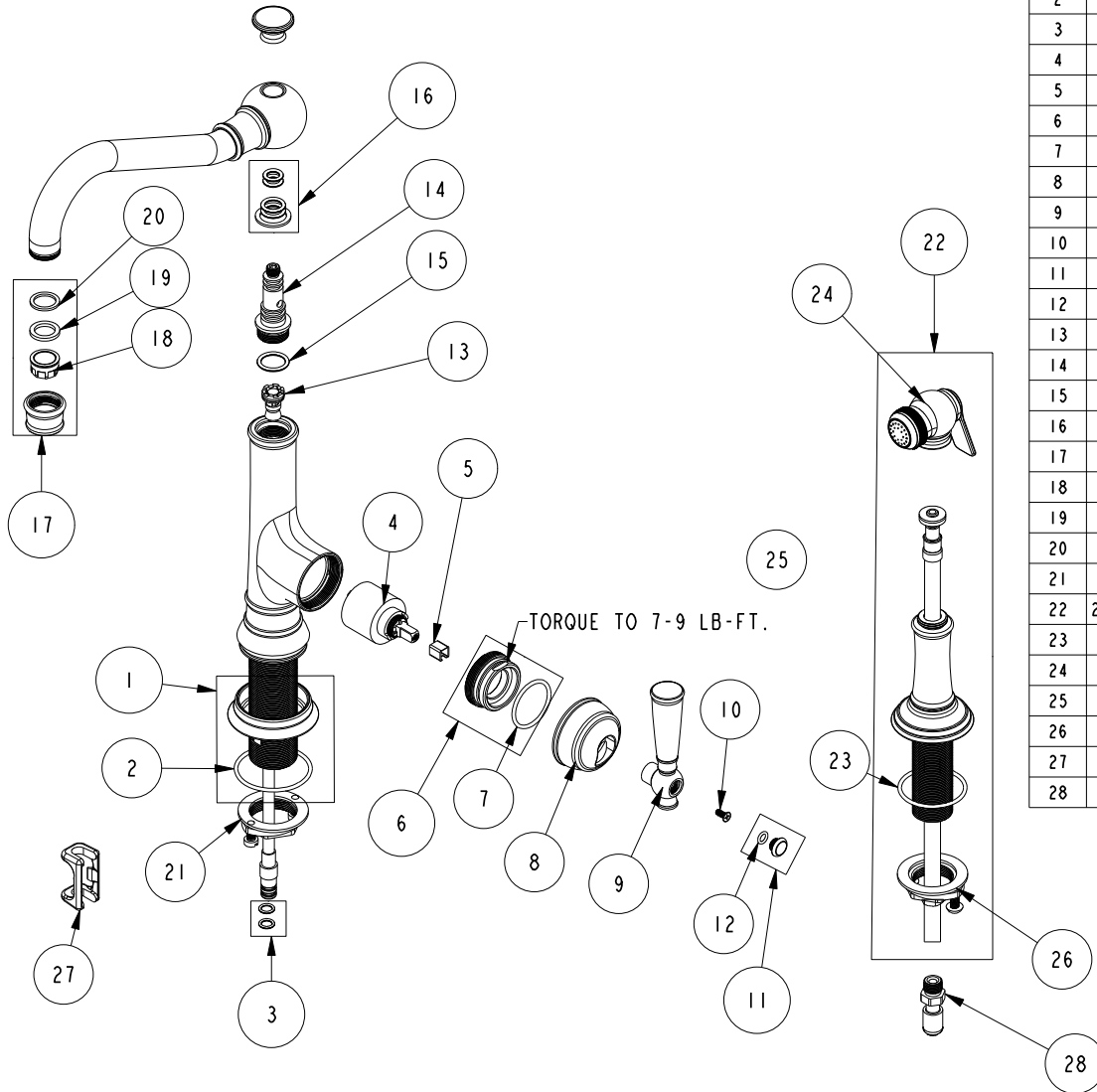


# REPLACEMENT PARTS

NOTE:  
USE SILICON GREASE (PART NUMBER 6727) TO LUBRICATE O-RINGS BEFORE INSTALL.



ITEM	PT/ASSY	SPECIFY FINISH	DESCRIPTION
1	2-783	YES	BASE RING ASM
2	91753		O-RING, # 2-136, EP, 50 DURO - GREY
3	1-399		O-RING KIT FOR SPOUT PEX CONECTION
4	1-064		SINGLE LEVER CARTRIDGE
5	91534		CARTRIDGE STEM INSERT
6	2-781		CART. RETAINER ASM
7	91227		O-RING, #2-125 EPDM
8	12835	YES	HANDLE HUB
9	20-314	YES	HANDLE LEVER ASM
10	92035		SCRW, M4 X .7 X 10 PHL FLT HD SS
11	2-778	YES	CAP ASM
12	91049		O-RING, #2- 010, EPDM, 65-75 DURO, NSF 61
13	11208		DIVERTER
14	11856		SWIVEL ADAPTER
15	91030		O-RING, #2- 115, EPDM, 65-75 DURO, NSF 61
16	10-301		SPOUT O-RING KIT
17	2-746	YES	AERATOR ASSEMBLY
18	11915		AERATOR INSERT STD, 1.8 GPM
19	91014		WSHR, .59 ID X .84 OD X .095 THK, FLT, RUBBER NSF 61
20	91040		WSHR, .590 ID X .825 OD X .072 THK, FLT, RUBBER NSF 61
21	1-256		MOUNTING KIT
22	2470-5703	YES	JACOBEAN SIDE SPRAY
23	91762		O-RING, #2-132, EP, 50 DURO - GREY
24	2-708	YES	SPRAY HEAD ASM
25	1-780		SIDE SPRAY HOSE ASSY
26	1-393		1-1/8 18 UNEF MOUNTING KIT
27	91568		RETAINER CLIP
28	13731		ADAPTER, QUICK CONNECT

JACOBEAN SINGLE HOLE - KITCHEN FAUCET  
2470-5313

REV T EN-4765 01/12/24 APPROVED RS

**NEWPORT BRASS.**

t: 949.417.5207 | www.newportbrass.com