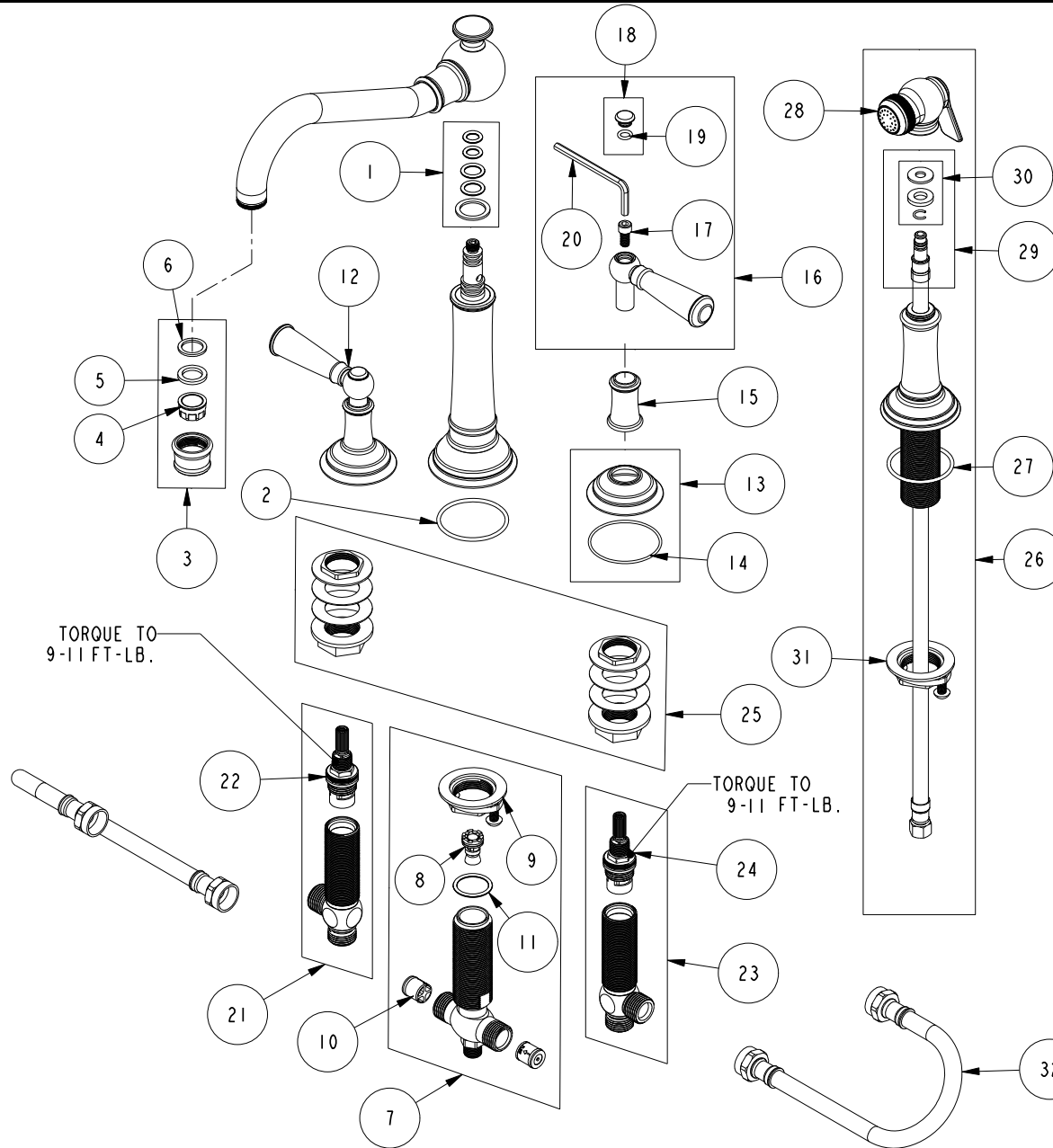


REPLACEMENT PARTS



ITEM	PT/ASSY	SPECIFY FINISH	DESCRIPTION
1	10-301		SPOUT O-RING KIT
2	91756		O-RING #2-134, EP, 50 DURO - GREY
3	2-746	YES	AERATOR ASSEMBLY
4	11915		AERATOR INSERT STD, 1.8 GPM
5	91014		WSHR, .59 ID X .84 OD X .095 THK, FLT, RUBBER NSF 61
6	91040		WSHR, .590 ID X .825 OD X .072 THK, FLT, RUBBER NSF 61
7	1-536		DIVERTER ASM TEE
8	11208		DIVERTER
9	1-393		1-1/8 18 UNEF MOUNTING KIT
10	11046		CHECK VALVE CARTRIDGE
11	91288		O-RING, #2-119, EPDM, 65-75 DURO
12	3-373	YES	LEVER HANDLE AND ESC. ASM
13	2-652	YES	HANDLE ESCUTCHEON ASM
14	91757		O-RING, #2-033, EPDM, 50 DURO
15	11590	YES	HANDLE BONNET
16	2-636	YES	LEVER HANDLE ASSEMBLY
17	92141		SCREW, CAP HD 1/4-20 X 1/2
18	20-682	YES	HANDLE CAP ASM
19	91158		O-RING, 2 X 7MM ID, EPDM, 65-75 DURO
20	92846		HEX KEY, 3/16" ALLOY STEEL
21	1-527		W/S CART/BODY ASM (HOT)
22	1-002		W/S CARTRIDGE - HOT
23	1-526		W/S CART/BODY ASM (COLD)
24	1-001		W/S CARTRIDGE - COLD
25	1-027		WIDE SPREAD MOUNTING HARDWARE
26	2470-5703	YES	JACOBAN SIDE SPRAY
27	91762		O-RING, #2-132, EP, 50 DURO - GREY
28	2-708	YES	SPRAY HEAD ASM
29	1-780		SIDE SPRAY HOSE ASSY
30	10-311		SIDE SPRAY HOSE WASHERS
31	1-393		1-1/8 18 UNEF MOUNTING KIT
32	10376		FLEX HOSE 12 IN.

3-HOLE (LVR) W/ SPRAY
2470-5433

REV B EN-4673 06/30/23 APPROVED RS

NEWPORT BRASS.

t: 949.417.5207 | www.newportbrass.com