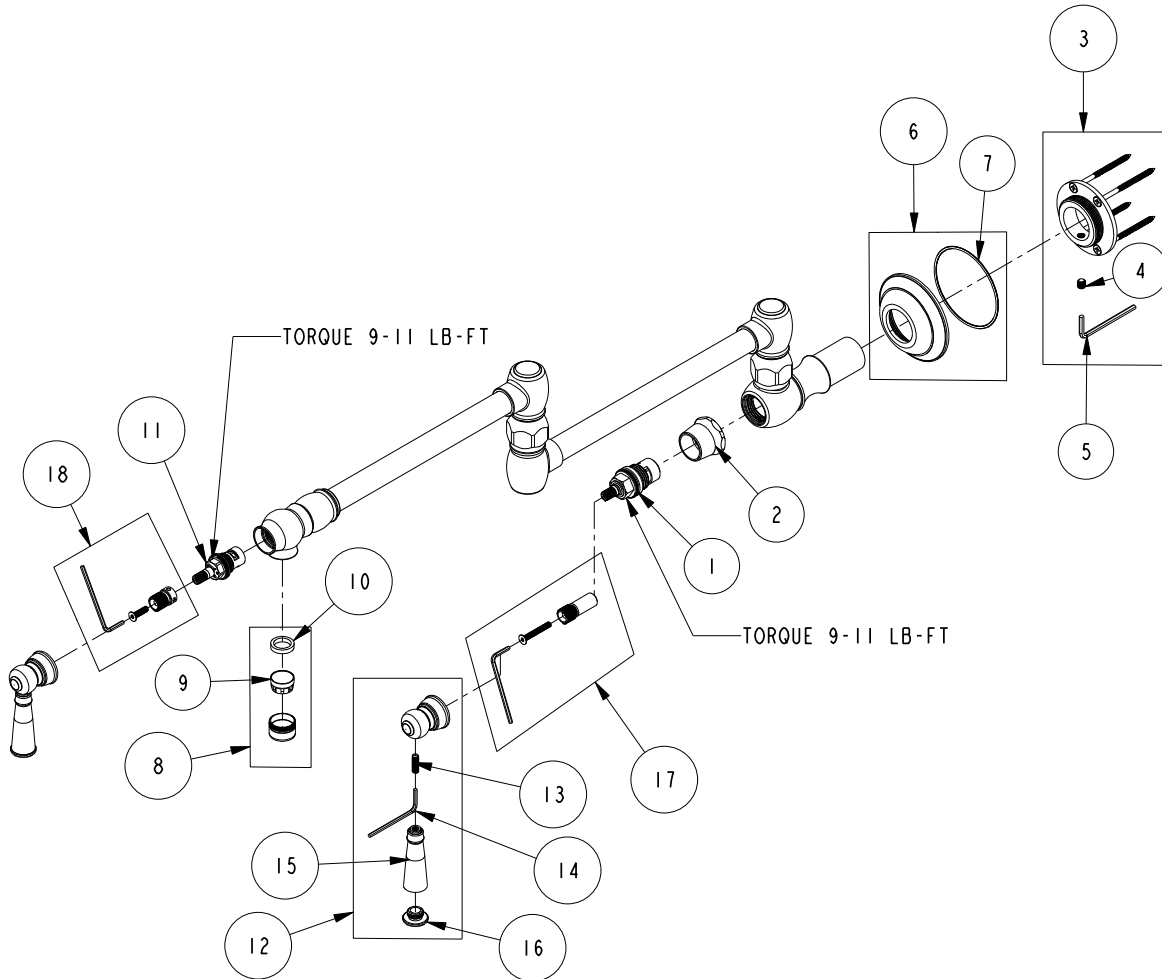


REPLACEMENT PARTS

ITEM	PT/ASSY	SPECIFY FINISH	DESCRIPTION
1	1-326		W/S CARTRIDGE FRICTION - HOT
2	12095	YES	BONNET
3	10-313		MOUNTING ASM
4	92231		SCRW, 1/4-20 X 1/4 SKT HD CUP PT SS
5	92422		HEX KEY, 1/8" ALLOY STEEL
6	2-555	YES	FLANGE ASM, TRAD
7	91771		O-RING, #2-038, EPDM, 50 DURO - GREY
8	2-518	YES	AREATOR ASM
9	11346		PERLATOR AERATOR-JR SIZE-FULL FLOW
10	91293		WSHR, 13.7 ID X 18.3 OD X 3.6MM THK, FLT, RUBBER NSF 61
11	1-437		CARTR 3/8 HOT 1/4 TR
12	20-768	YES	HANDLE LEVER ASM
13	92192		SCRW, 10-32 X 5/8 SKT HD CUP PT SS
14	10159		HEX KEY, 3/32 ALLOY STEEL
15	12110	YES	LEVER, HANDLE
16	12111		CAP, LEVER, HANDLE
17	10-315		CARTRIDGE STEM ADAPTER KIT
18	10-314		CARTRIDGE STEM ADAPTER KIT



WALL MOUNT POT-FILLER
2470-5503

REV K EN-4682 08/08/23 APPROVED RS

NEWPORT BRASS.

t: 949.417.5207 | www.newportbrass.com