
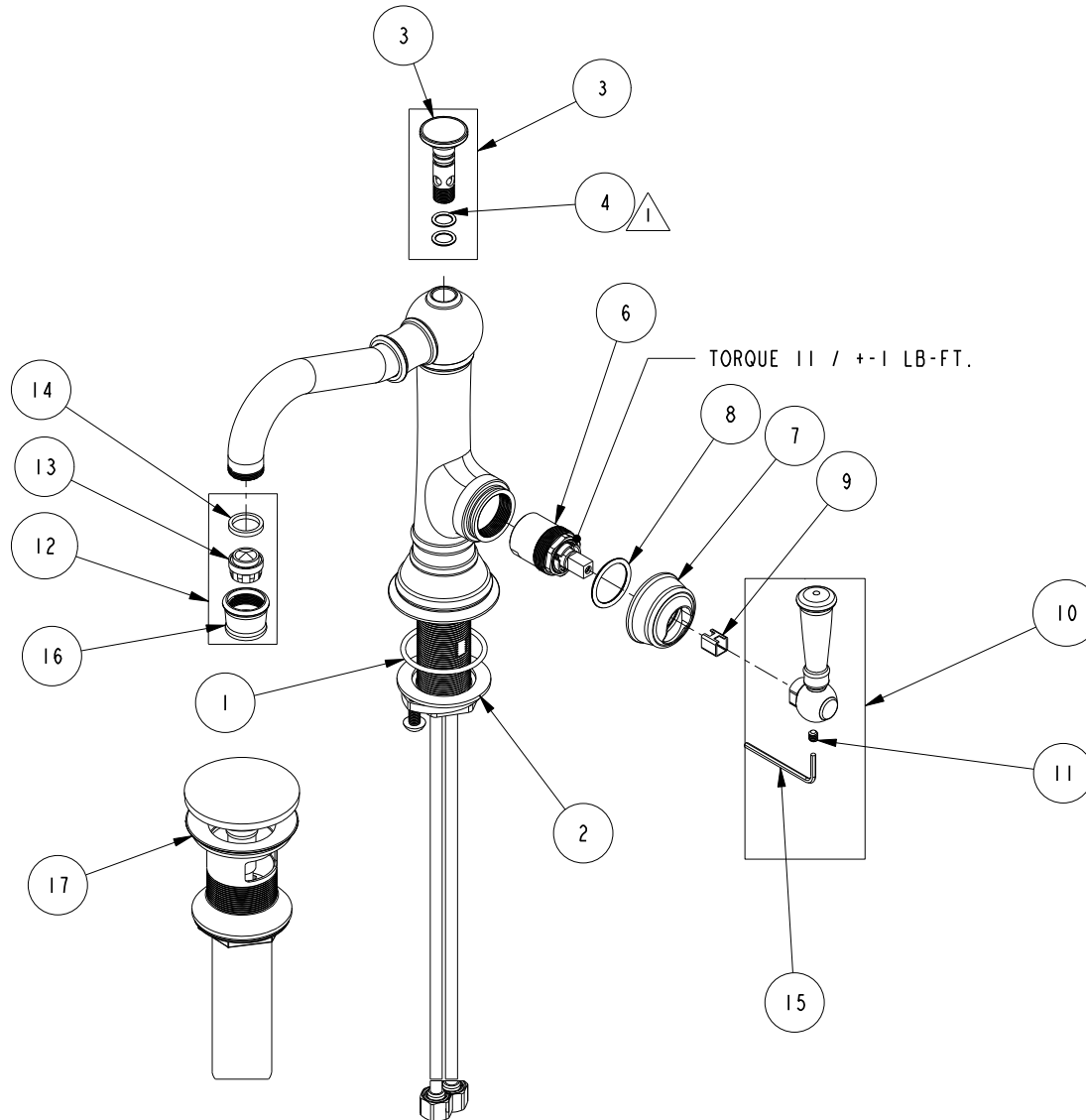


# REPLACEMENT PARTS

NOTE:

 USE SILICON GREASE (PART NUMBER 6727) TO LUBRICATE O-RINGS BEFORE INSTALL.



ITEM	PT/ASSY	SPECIFY FINISH	DESCRIPTION
1	91768		O-RING, #2-130, EP, 50 DURO - GREY
2	1-393		1-1/8 18 UNEF MOUNTING KIT
3	2-833	YES	FINIAL ASM
4	91017		O-RING #2-012
6	1-371		CARTRIDGE
7	30785		HANDLE BONNET
8	91288		O-RING, #2-119, EPDM, 65-75 DURO
9	91534		CARTRIDGE STEM INSERT
10	2-832	YES	LEVER ASM
11	92104		SCRW, 10-24 X 3/16 SKT HD CUP PT SS
12	2-658	YES	AERATOR ASM
13	12403		AERATOR INSERT, Jr. SIZE, 1.2 GPM
14	91500		GSKT, .578 ID X .728 OD X .102 THK EPDM
15	10159		HEX KEY, 3/32 ALLOY STEEL
16	11625		W/S AERATOR SHELL
17	330	YES	DRAIN, PUSH DOWN, W/ OVERFLOW

**SINGLE HOLE LAV FAUCET  
2473**

REV J EN-4735 01/15/24 APPROVED R.S.

**NEWPORT BRASS.**

t: 949.417.5207 | www.newportbrass.com