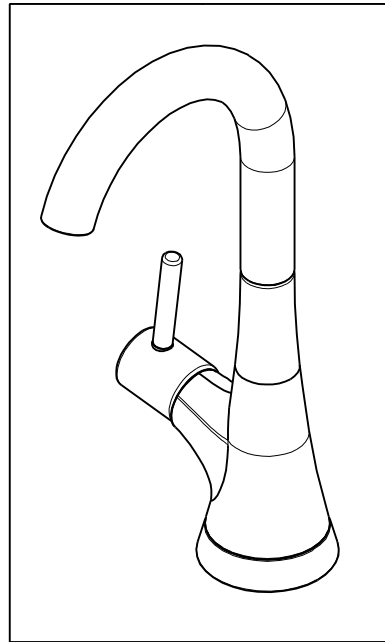


NOTES:

1. TO INSPECT ASSEMBLY, FOLLOW FIRST ARTICLE AND IN PROCESS INSPECTION SHEET.
2. APPLY LOCTITE 680.
3. CUT AND SHORTEN O-RING BY .13" TO .20" IN LENGTH BEFORE INSTALLING.
4. SLIT O-RING BEFORE INSTALLING.
5. APPLY LOCTITE 242.
6. CONNECT WHITE AND RED TUBINGS TOGETHER AND WATER TEST WHOLE UNIT.
7. BAG 92194 IN A SEPARATE BAG.
8. REWORK CARTRIDGE ASSY IF THE HANDLE DOES NOT RETURN TO THE 'OFF' POSITION AUTOMATICALLY AFTER WATER TESTING.
9. INSTALLATION TORQUE: 8-14 LB-FT.
10. INSTALLATION TORQUE: 78 LB-IN +/- 6 LB-IN.
11. LUBRICATE SPRING WITH DOW CORNING III SILICONE COMPOUND.
12. PRE-CRIMPED THESE PARTS TOGETHER. SEE INSTALLATION INSTRUCTION.
13. APPLY LIGHT FILM OF DOW CORNING III SILICONE COMPOUND.



BILL OF MATERIAL (CURRENT LEVEL)

ITEM	PT/ASSY	DESCRIPTION	TYPE	QTY.
1	1-393	1-1/8 18 UNEF MOUNTING KIT	ASSEMBLY	1
2	1-431	RED SUPPLY LINE	ASSEMBLY	1
3	1-432	BLUE SUPPLY LINE	ASSEMBLY	1
4	1-433	GREY SUPPLY LINE	ASSEMBLY	1
5	5-061	ADAPTER/CARTRIDGE ASSY	ASSEMBLY	1
6	11822	SPOUT	PART	1
7	11823	HANDLE	PART	1
8	11824	LEVER, HANDLE	PART	1
9	11825	ADAPTER - VESSA WATER DISPENSER	PART	1
10	13070	RETAINER PLATE	PART	1
11	13284	BODY, WATER DISP, VESSA (HOT)	PART	1
12	13289	NIPPLE	PART	1
13	91018	O-RING, #2- 013, EPDM, 65-75 DURO, NSF-61	PART	4
14	91383	O-RING, #2- 014, TEFLON, NSF 61	PART	1
15	91554	RED IDENTIFIER	PART	1
16	91767	O-RING, #2-128, 50 DURO	PART	1
17	92016	SCRW, 10-24 X 3/4 SKT HD FLT PT SS	PART	1
18	92194	COUPLING, 3/8" X 1/4"	PART	1
19	92486	SCRW, 8-32 X 1/2 SKT HD CUP PT SS	PART	1

ZONE	REV	DESCRIPTION	DATE	APPROVED
-	K	EN-4300jj	04/12/21	R.S.
-	J	EN-3634C	06/02/20	C.G.
-	H	EN-3722	02/08/19	C.G.
-	G	EN-3558a	01/02/19	V.V.
-	F	EN-3312	05/12/17	J.A.
-	E	EN-2601	9/16/13	-
-	D	EN-2528	5/08/13	-
-	C	EN-2157	06/28/12	-
-	B	EN-2128	04/05/12	-
-	A	EN-1941	01/31/12	-
-	-	EN-1552-4	02/01/11	-

COPYRIGHT 2005 BRASSTECH, INC. THESE DRAWINGS AND THE DESIGNS DEPICTED HEREIN ARE THE PROPRIETARY PROPERTY OF BRASSTECH. ANY USE OR REPRODUCTION IS SUBJECT TO THE EXPRESS APPROVAL OF BRASSTECH. UNAUTHORIZED USE IS STRICTLY PROHIBITED. ALL RIGHTS RESERVED.

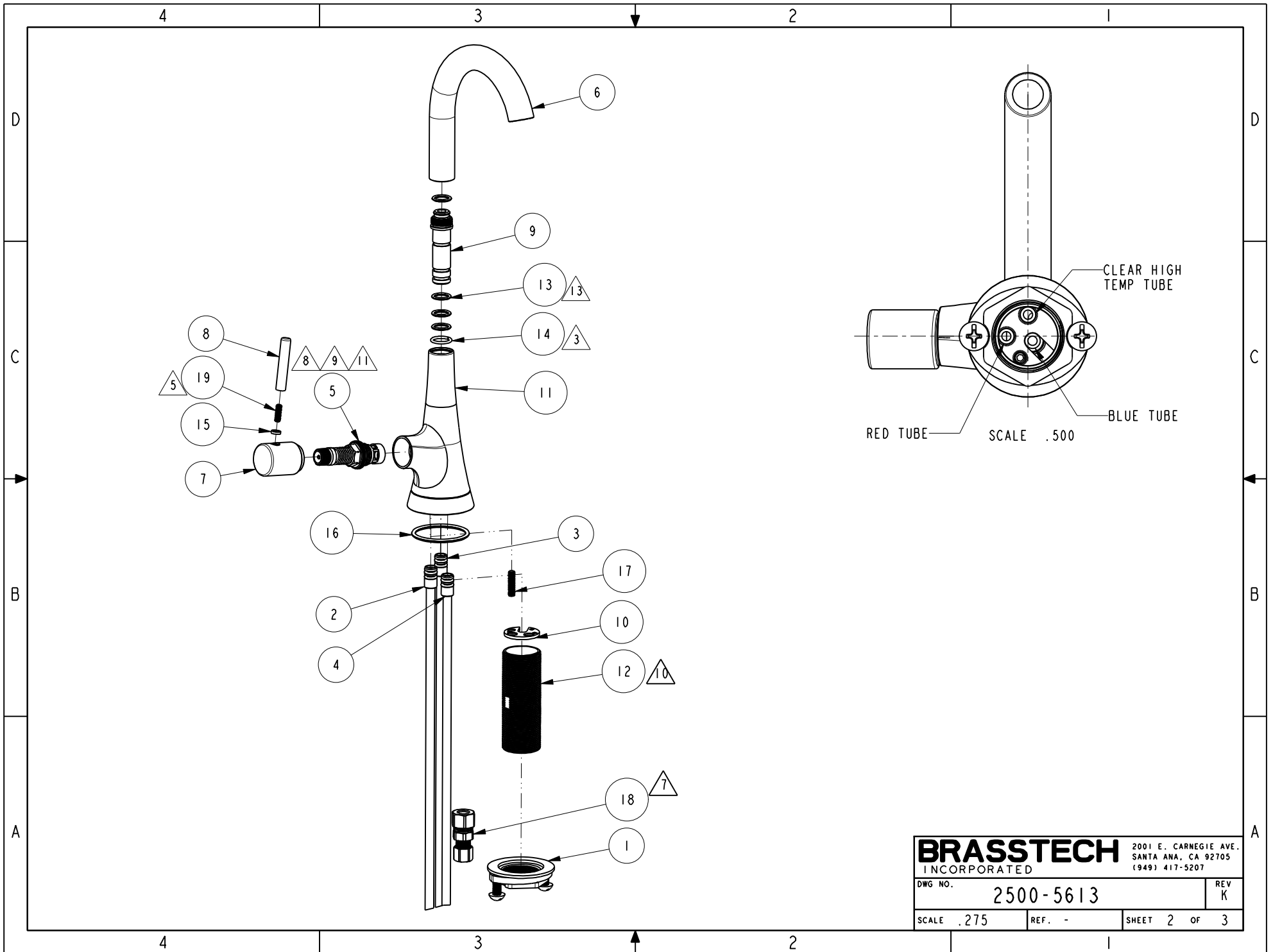
TESTING	-	-	-
ASSEMBLY	-	-	-
PLATING	-	-	-
POLISHING	-	NEXT ASSY	USED ON
MACHINING	-	APPLICATION	
TOOLING FIXTURE #	REMOVE ALL BURRS AND SHARP EDGES		

UNITS ARE: INCHES [MM]	
TOLERANCES ARE:	
FRACTIONS DECIMALS	ANGLES
±1/16"	.X ±.1 [2,5]
	.XX ±.06 [1,5]
(X.XXX) DENOTES CRITICAL DIMS.	
ALL THREADS ARE CRITICAL	
DRAWN	JINSON 04/12/21
CHECKED	R.S. 04/12/21
APPROVED	R.S. 04/12/21

BRASSTECH 2001 CARNEGIE AVE.
INCORPORATED SANTA ANA, CA 92705
(949) 417-5207

VESPERA HOT WATER DISPENSER

DWG NO.	2500-5613	REV	K
SCALE	.375	REF.	-
SHEET	1	OF	3



BRASSTECH		2001 E. CARNEGIE AVE. SANTA ANA, CA 92705 (949) 417-5207	
DWG NO.	2500-5613	REV	K
SCALE .275	REF. -	SHEET 2	OF 3

