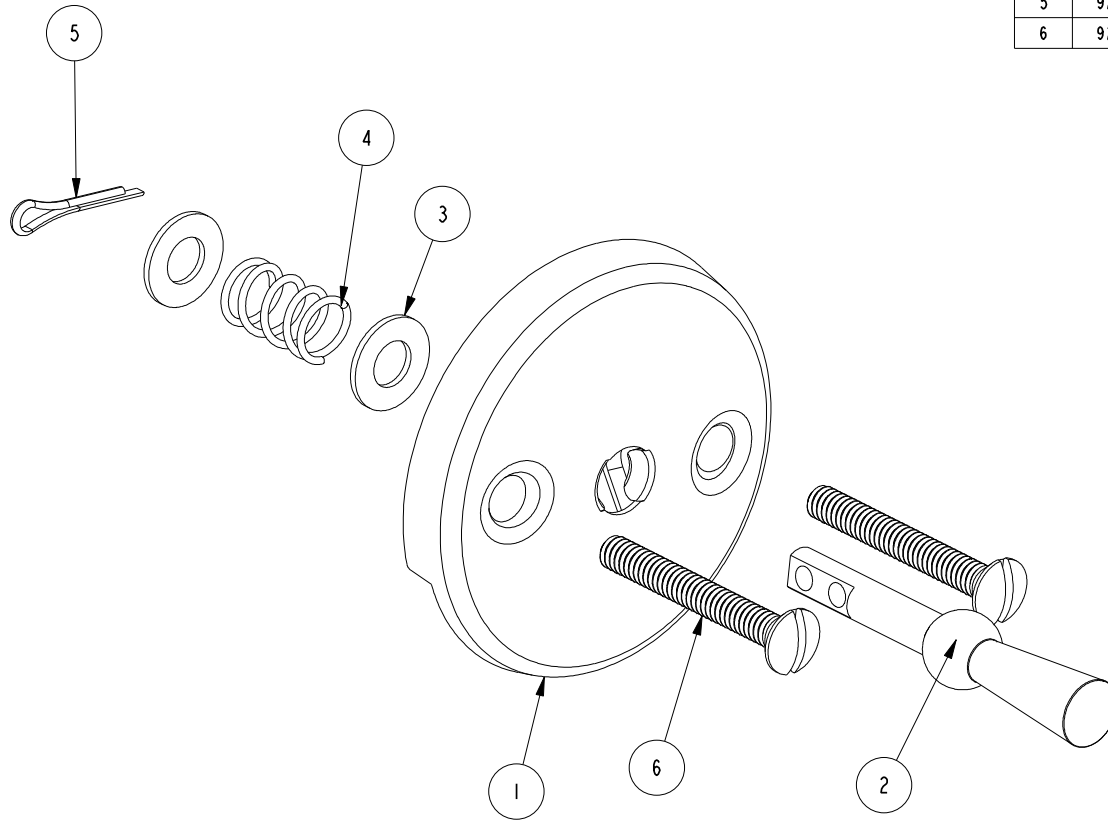


NOTES:

1. TO INSPECT ASSEMBLY, FOLLOW FIRST ARTICLE AND IN PROCESS INSPECTION SHEET.

BILL OF MATERIAL (CURRENT LEVEL)

ITEM	PT/ASSY	DESCRIPTION	TYPE	QTY.
1	50264	FACEPLATE	PART	1
2	50265	TRIP LEVER	PART	1
3	50267	WSHR BRS .35 X .69 X .05	PART	2
4	50266	SPRING 1" LONG	PART	1
5	92066	COTTER PIN 3/32 OD	PART	1
6	92065	SCRW, 1/4-20 X 2 SLT OVAL HD BRASS	PART	2



<p>UNITS ARE: INCHES [MM] TOLERANCES ARE: FRACTIONS DECIMALS ANGLES ±1/16" .X ±.1 [2.5] ±1° .XX ±.06 [1.5]</p>					<p>BRASSTECH 2001 CARNEGIE AVE. INCORPORATED SANTA ANA, CA 92705 (949) 417-5207</p>	
<p>(X.XXX) DENOTES CRITICAL DIMS. ALL THREADS ARE CRITICAL</p>					<p>TRIP LEVER FACEPLATE</p>	
<p>DRAWN - -</p>					<p>DWG NO. 267 REV A</p>	
<p>CHECKED - -</p>					<p>SCALE 0.750 REF. - SHEET 1 OF 2</p>	
<p>APPROVED - -</p>					<p>REMOVE ALL BURRS AND SHARP EDGES</p>	

COPYRIGHT 2005 BRASSTECH, INC.
THESE DRAWINGS AND THE DESIGNS
DEPICTED HEREIN ARE THE PROPRIETARY
PROPERTY OF BRASSTECH. ANY USE
OR REPRODUCTION IS SUBJECT TO
THE EXPRESS APPROVAL OF BRASSTECH.
UNAUTHORIZED USE IS STRICTLY
PROHIBITED. ALL RIGHTS RESERVED.

ZONE	REV	DESCRIPTION	DATE	APPROVED
-	A	EN-430011	10/11/21	R.S.
-	-	EN-2537	05/17/13	R.S.

A

A

4

3

2

1

D

D

C

C

B

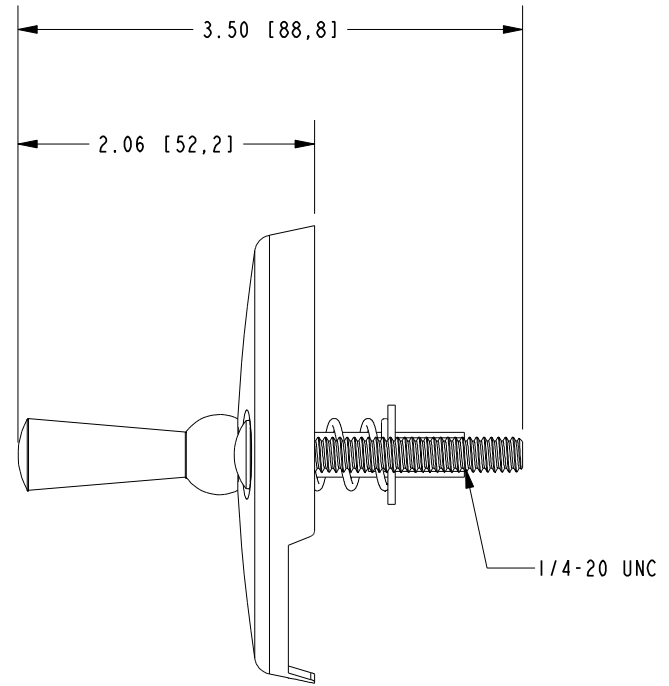
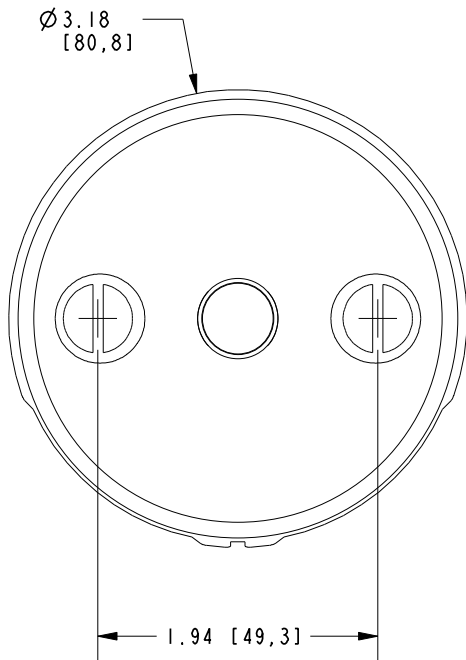
B

4

3

2

1



BRASSTECH		2001 E. CARNEGIE AVE. SANTA ANA, CA 92705 (949) 417-5207	
DWG NO.	267	REV	A
SCALE	0.750	REF.	-
		SHEET	2 OF 2