

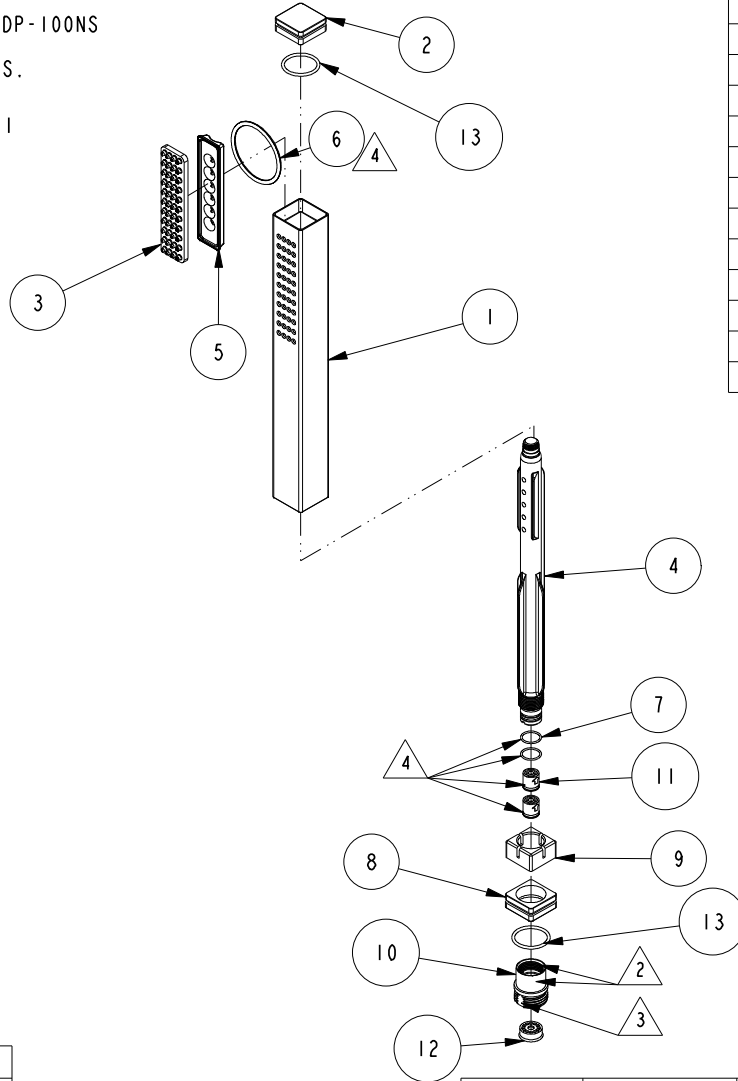
NOTES:

1. TO INSPECT ASSEMBLY, FOLLOW FIRST ARTICLE AND IN PROCESS INSPECTION SHEET.

2. APPLY 3M SCOTCH-WELD DP-100NS

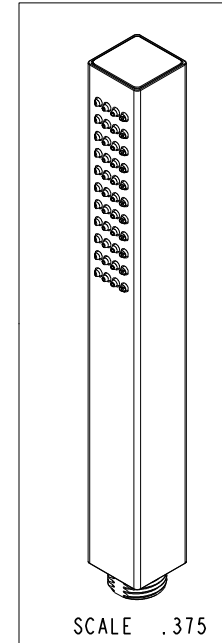
3. APPLY TORQUE 7 IN. LBS.

4. APPLY DOW CORNING 111



BILL OF MATERIAL (CURRENT LEVEL)

ITEM	PT/ASSY	DESCRIPTION	TYPE	QTY.
1	12810	SQUARE SHELL	PART	1
2	12811	CAP	PART	1
3	12813	MEMBRANE	PART	1
4	12805	WATERWAY	PART	1
5	13050	SPACER, SQUARE	PART	1
6	91256	O-RING, #2-128, EPDM, 65-75 DURO	PART	1
7	91725	O-RING, 1 X 11MM ID, EPDM, 65-75 DURO	PART	2
8	12814	BOTTOM CAP	PART	1
9	91740	END INSERT, SQUARE	PART	1
10	12815	ADAPTER	PART	1
11	5-050	CHECK VALVE, NEOPERL DW10, WHITE	PART	2
12	12832	FLOW REGULATOR, 1.8 GPM MAX	PART	1
13	91023	O-RING, #2- 019, EPDM, 65-75 DURO, NSF 61	PART	2



-	F	EN-4300k	11/03/20	R. S.
-	E	EN-4090	01/27/20	C. G.
-	D	EN-3722	02/08/19	C. G.
-	C	EN-3636-1	01/11/19	J. M.
-	B	EN-3779	01/03/19	J. M.
-	A	EN-3607	05/14/18	J. M.
-	-	EN-3511	01/16/18	J. M.
ZONE	REV	DESCRIPTION	DATE	APPROVED

COPYRIGHT 2005 BRASSTECH, INC. THESE DRAWINGS AND THE DESIGNS DEPICTED HEREIN ARE THE PROPRIETARY PROPERTY OF BRASSTECH. ANY USE OR REPRODUCTION IS SUBJECT TO THE EXPRESS APPROVAL OF BRASSTECH. UNAUTHORIZED USE IS STRICTLY PROHIBITED. ALL RIGHTS RESERVED.

TESTING	-	-	-
ASSEMBLY	-	-	-
PLATING	-	-	-
POLISHING	-	NEXT ASSY	USED ON
MACHINING	-	APPLICATION	
TOOLING FIXTURE #	REMOVE ALL BURRS AND SHARP EDGES		

UNITS ARE: INCHES [MM]  
TOLERANCES ARE:  
FRACTIONS DECIMALS ANGLES  
±1/16" .X ±.1 [2.5] ±1°  
.XX ±.06 [1.5]

(X.XXX) DENOTES CRITICAL DIMS.  
ALL THREADS ARE CRITICAL

DRAWN	JIMSON	02/08/19
CHECKED	C.G.	02/08/19
APPROVED	C.G.	02/08/19

**BRASSTECH** 2001 CARNEGIE AVE.  
INCORPORATED SANTA ANA, CA 92705  
(949) 417-5207

SQUARE WAND HANDSHOWER

DWG NO.	283-102	REV	F
SCALE	.212	REF.	-
SHEET	1	OF	2

