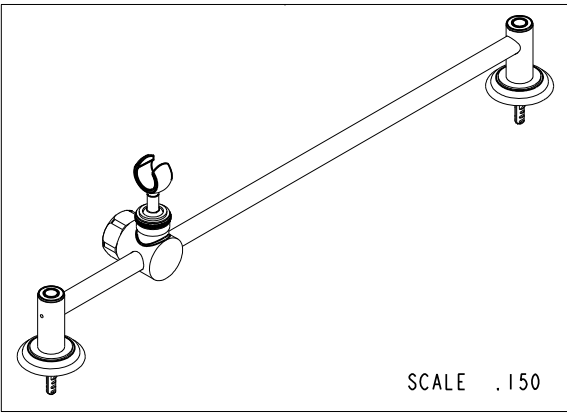
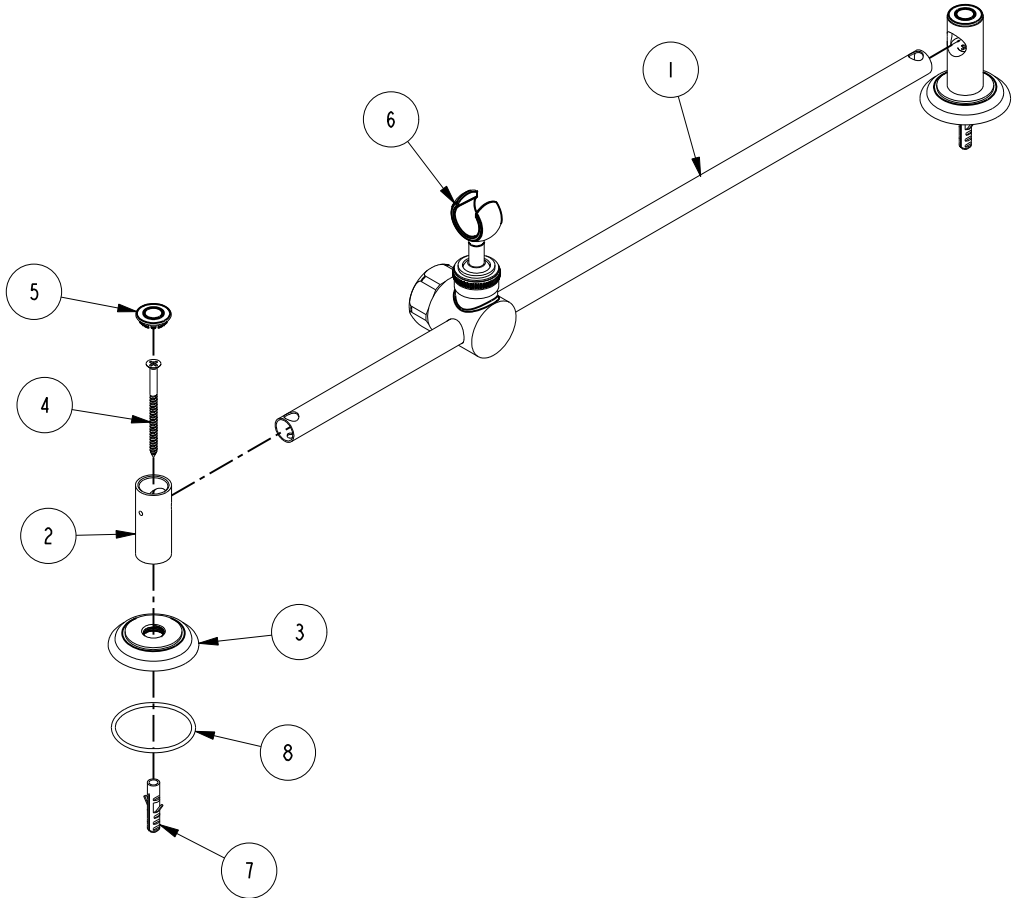


| BILL OF MATERIAL (CURRENT LEVEL) |         |                                     |          |      |
|----------------------------------|---------|-------------------------------------|----------|------|
| ITEM                             | PT/ASSY | DESCRIPTION                         | TYPE     | QTY. |
| 1                                | 50310   | SLIDE BAR TUBE                      | PART     | 1    |
| 2                                | 50312   | END POST                            | PART     | 2    |
| 3                                | 10050   | ESCUTCHEON WALL VALVE               | PART     | 2    |
| 4                                | 92071   | SCRW, #10 X 3 PHL FLT HD SS         | PART     | 2    |
| 5                                | 50315   | END CAP                             | PART     | 2    |
| 6                                | 6-013   | HANDSHWR HOLDER ASM                 | ASSEMBLY | 1    |
| 7                                | 91368   | WALL ANCHOR PLASTIC, 12-1/4         | PART     | 2    |
| 8                                | 91753   | O-RING, # 2-136, EP, 50 DURO - GREY | PART     | 2    |



COPYRIGHT 2005 BRASSTECH, INC. THESE DRAWINGS AND THE DESIGNS DEPICTED HEREIN ARE THE PROPRIETARY PROPERTY OF BRASSTECH. ANY USE OR REPRODUCTION IS SUBJECT TO THE EXPRESS APPROVAL OF BRASSTECH. UNAUTHORIZED USE IS STRICTLY PROHIBITED. ALL RIGHTS RESERVED.

**BRASSTECH**  
INCORPORATED  
2001 CARNEGIE AVE.  
SANTA ANA, CA 92705  
(949) 417-5207

HANDSHWR SLIDE BAR

ASSY. NO. 292

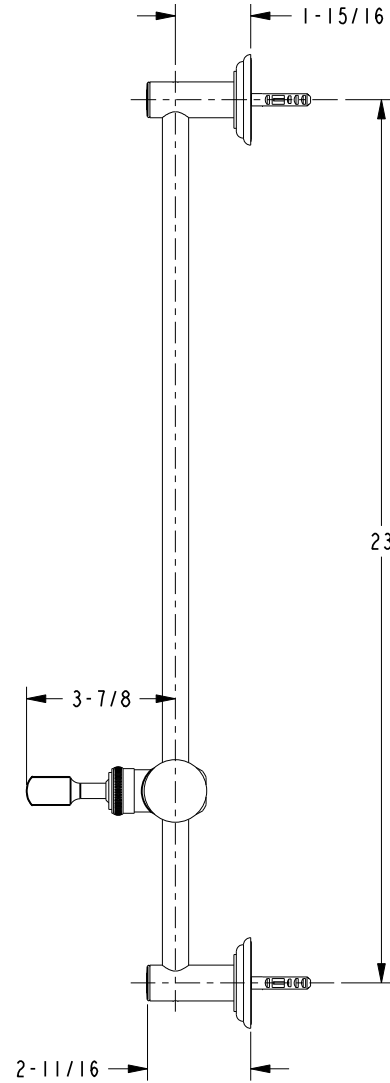
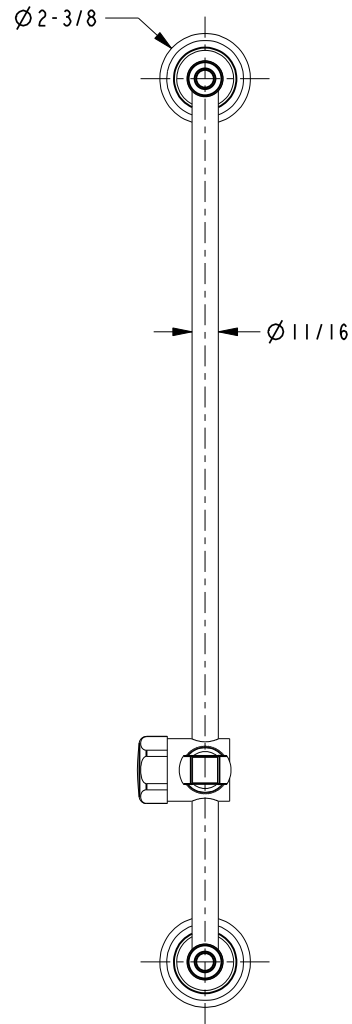
SCALE .200

REF. -

SHEET 1 OF 2

|     |          |          |
|-----|----------|----------|
| D   | EN-3942  | 09/25/19 |
| C   | EN-3722  | 09/25/19 |
| B   | EN-2398  | 04/11/13 |
| A   | EO-0372  | 06/08/04 |
| -   | RELEASED | 03/05/96 |
| REV | REV DESC | DATE     |

SPECIFICATION DWG



DIMENSIONS ARE IN INCHES AND AN APPROXIMATION OF A TYPICAL INSTALLATION

COPYRIGHT 2005 BRASSTECH, INC. THESE DRAWINGS AND THE DESIGNS DEPICTED HEREIN ARE THE PROPRIETARY PROPERTY OF BRASSTECH. ANY USE OR REPRODUCTION IS SUBJECT TO THE EXPRESS APPROVAL OF BRASSTECH. UNAUTHORIZED USE IS STRICTLY PROHIBITED. ALL RIGHTS RESERVED.

|                  |      |   |   |
|------------------|------|---|---|
| <b>BRASSTECH</b> |      | 2001 CARNEGIE AVE.<br>SANTA ANA, CA 92705<br>(949) 417-5207 |   |
| DWG NO.          | 292  | REV   | D |
| SCALE            | .200 | REF.  | - |
| SHEET 2          |      | OF 2  |   |