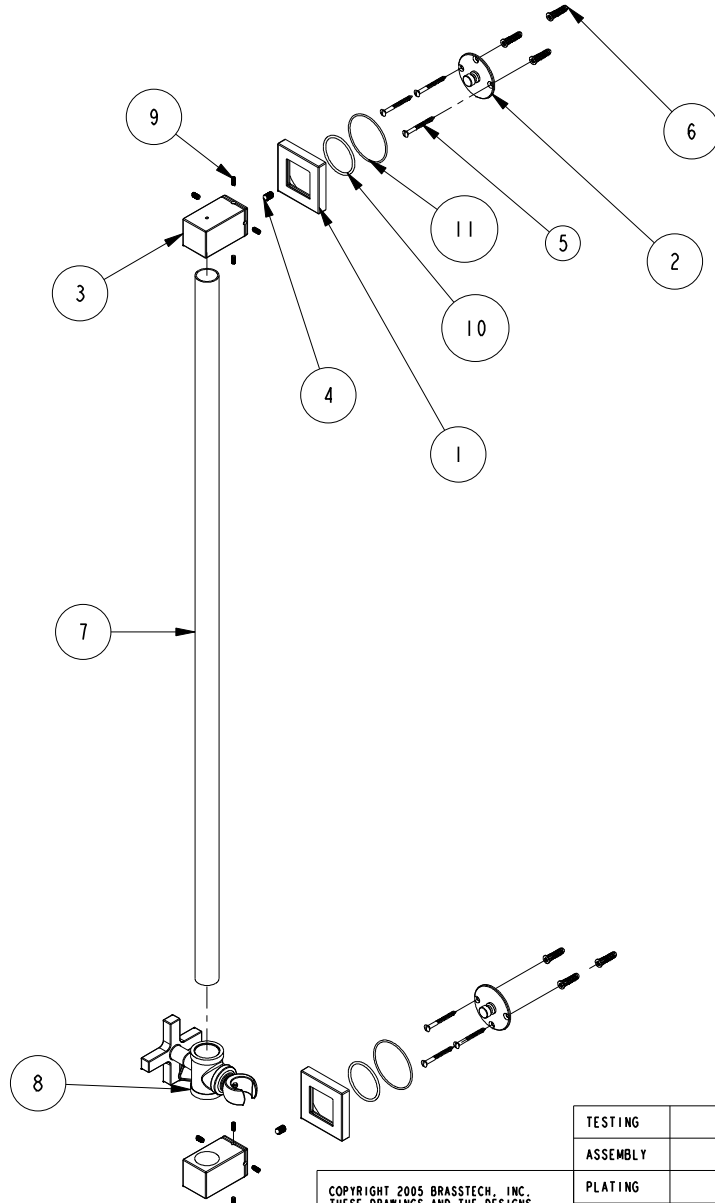


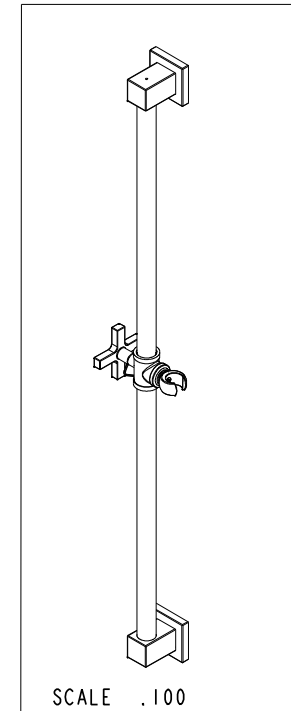
NOTES:

(NI) 1. FIT / FORM / FUNCTION SHALL FOLLOW PS-E.008.



**BILL OF MATERIAL (CURRENT LEVEL)**

ITEM	PT/ASSY	DESCRIPTION	TYPE	QTY.
1	13327	ESCUTCHEON	PART	2
2	80186	BRACKET	PART	2
3	13326	SLIDE BAR POST	PART	2
4	92255	SCRW, 1/4-20 X 1/2 SKT HD CONE PT SS	PART	2
5	92051	SCRW, #8 X 1-3/4 SLT OVL HD BRASS	PART	6
6	91165	WALL ANCHOR PLASTIC	PART	6
7	80190	SLIDE BAR TUBE	PART	1
8	3-685	SLIDE BAR HOLDER ASM - CONTEMP	ASSEMBLY	1
9	92259	SCRW, 8-32 X 3/8 SKT HD CUP PT SS	PART	8
10	91362	O-RING, #2-130, EPDM, 65-75 DURO	PART	2
11	91754	O-RING, #2-034, EPDM, 50 DURO - GREY	PART	2



COPYRIGHT 2005 BRASSTECH, INC. THESE DRAWINGS AND THE DESIGNS DEPICTED HEREIN ARE THE PROPRIETARY PROPERTY OF BRASSTECH. ANY USE OR REPRODUCTION IS SUBJECT TO THE EXPRESS APPROVAL OF BRASSTECH. UNAUTHORIZED USE IS STRICTLY PROHIBITED. ALL RIGHTS RESERVED.

TESTING	-	-	-
ASSEMBLY	-	-	-
PLATING	-	-	280T
POLISHING	-	NEXT ASSY	USED ON
MACHINING	-	APPLICATION	
TOOLING FIXTURE #	REMOVE ALL BURRS AND SHARP EDGES		

UNITS ARE: INCHES [MM]  
 TOLERANCES ARE:  
 FRACTIONS DECIMALS ANGLES  
 ±1/16" .X ±.1 [2.5] ±1°  
 .XX ±.06 [1.5]  
 (X.XXX) DENOTES CRITICAL DIMS.  
 ALL THREADS ARE CRITICAL  
 DRAWN R.S. 10/03/19  
 CHECKED J.M. 10/03/19  
 APPROVED J.M. 10/03/19

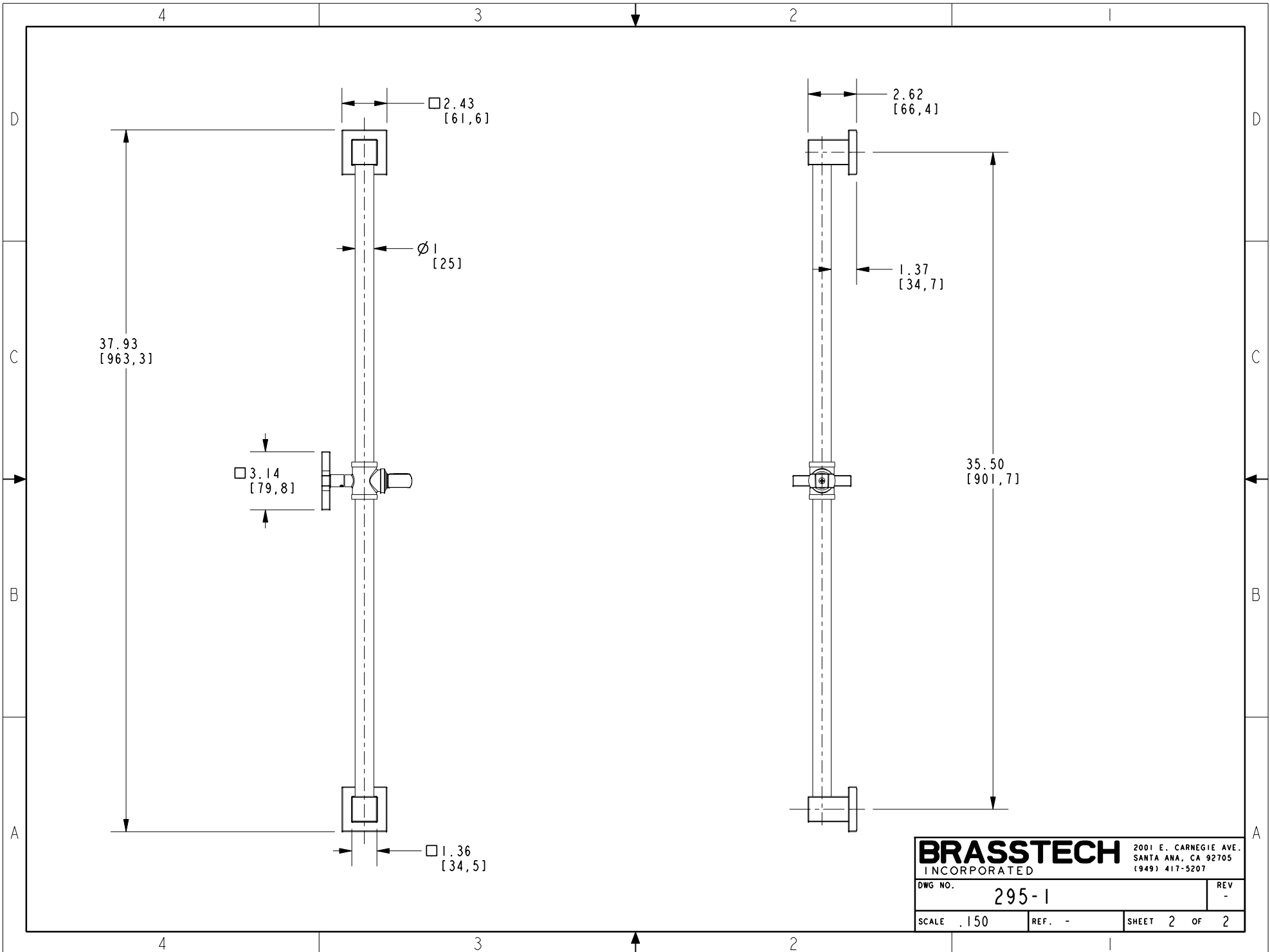
**BRASSTECH** 2001 CARNEGIE AVE.  
 INCORPORATED SANTA ANA, CA 92705  
 (949) 417-5207

**HAND SHOWER SLIDE BAR**

DWG NO. 295-1 REV -

SCALE .125 REF. - SHEET 1 OF 2

-	-	EN-3979	10/03/19	J.M.
ZONE	REV	DESCRIPTION	DATE	APPROVED



<b>BRASSTECH</b>		2001 E. CARNEGIE AVE. SANTA ANA, CA 92705 (949) 417-5207	
DWG NO.	295-1	REV	-
SCALE	.150	REF.	-
		SHEET	2 OF 2