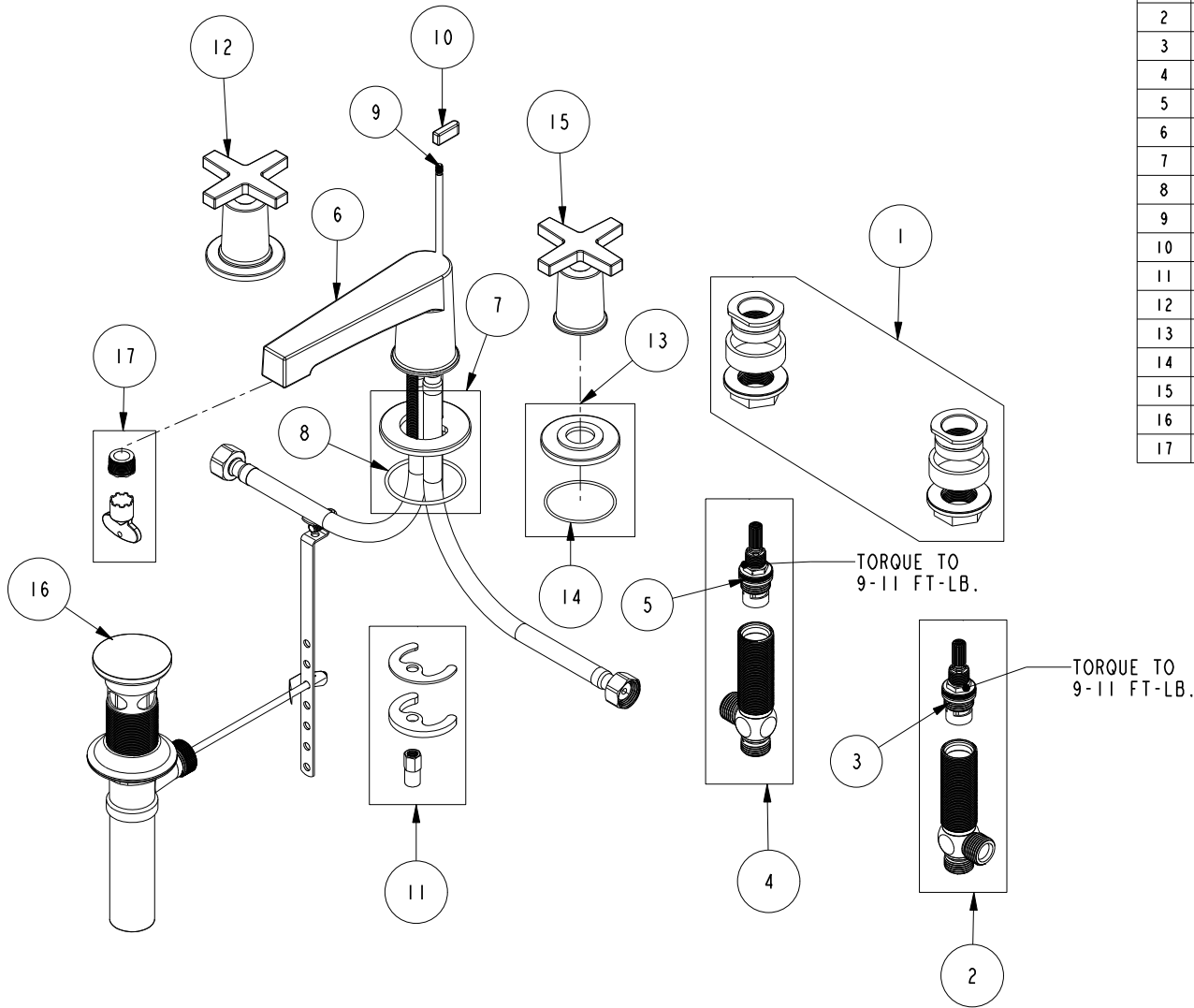


REPLACEMENT PARTS



ITEM	PT/ASSY	SPECIFY FINISH	DESCRIPTION
1	1-226		WIDESPREAD MOUNTING HARDWARE
2	1-527		W/S CART/BODY ASM (HOT)
3	1-002		W/S CARTRIDGE - HOT
4	1-526		W/S CART/BODY ASM (COLD)
5	1-001		W/S CARTRIDGE - COLD
6	3-574	YES	W/S SPOUT ASSEMBLY
7	20-733	YES	ESCUTCHEON ASM
8	91752		O-RING, #2- 137, EPDM, 50 DURO
9	10288	YES	3/16" POP UP ROD
10	12499	YES	POP UP KNOB
11	1-491		SPOUT MOUNTING KIT
12	3-573	YES	HANDLE AND ESCUTCHEON ASSEMBLY
13	20-162	YES	ESCUTCHEON ASM
14	91758		O-RING, #2-032, EPDM, 50 DURO - GREY
15	20-164	YES	CROSS HANDLE ASSEMBLY
16	325	YES	POP UP ASSEMBLY
17	1-492		AERATOR 1.2 GPM WITH KEY

**WIDESPREAD LAVATORY FAUCET
2980**

REV E EN-4728 11/03/23 APPROVED RS

NEWPORT BRASS.

t: 949.417.5207 | www.newportbrass.com