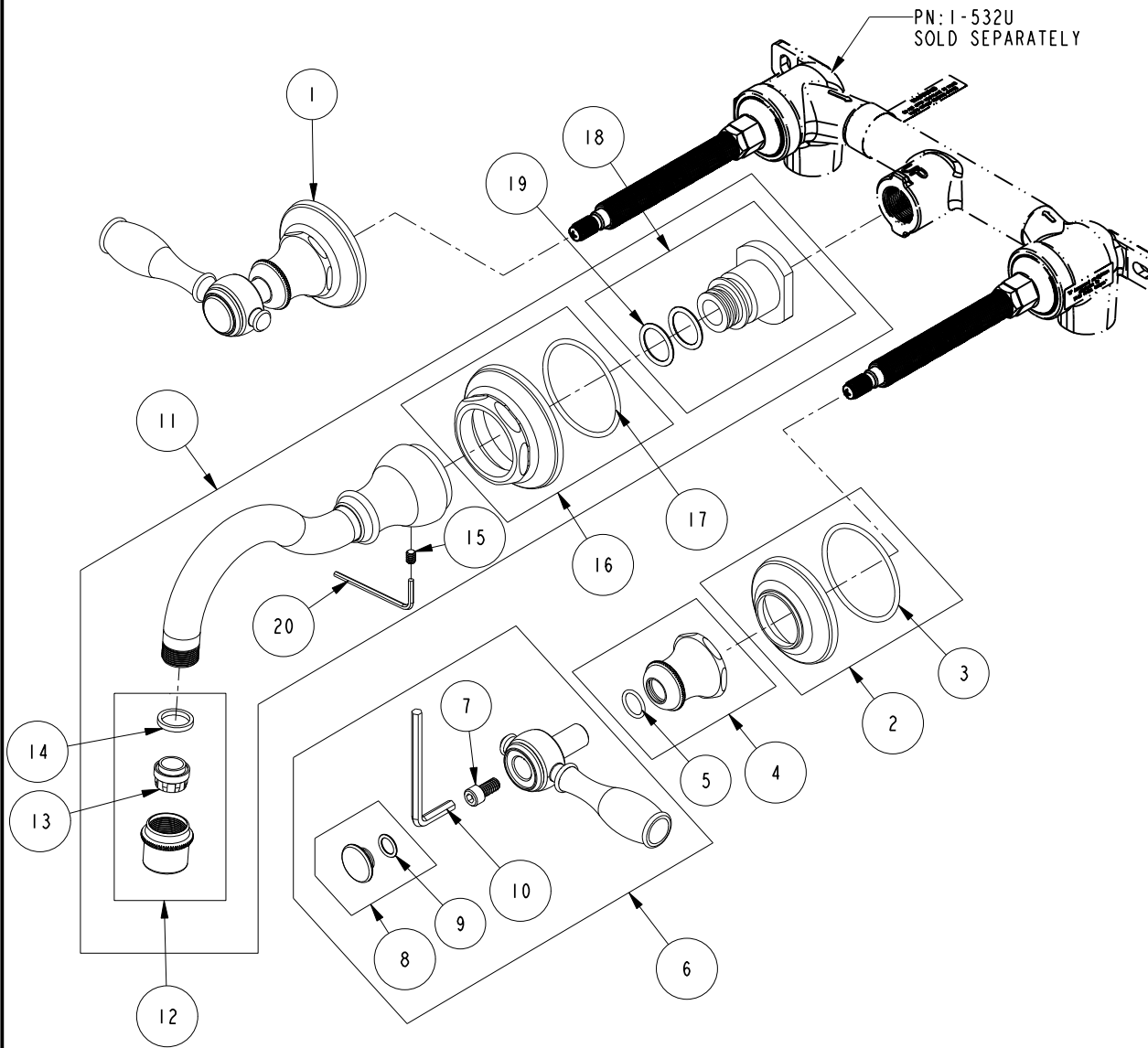


REPLACEMENT PARTS



ITEM	PT/ASSY	SPECIFY FINISH	DESCRIPTION
1	3-323	YES	LEVER HANDLE ASSEMBLY
2	20-740	YES	ESCUTCHEON ASM
3	91753		O-RING, # 2-136, EP, 50 DURO - GREY
4	2-491	YES	HANDLE BONNET ASM
5	91019		O-RING, #2- 014, EPDM, 65-75 DURO, NSF 61
6	2-534	YES	LEVER HANDLE ASM
7	92141		SCREW, CAP HD 1/4-20 X 1/2
8	20-739	YES	HANDLE CAP ASM
9	91017		O-RING #2-012
10	92846		HEX KEY, 3/16" ALLOY STEEL
11	3-297	YES	WALL LAV SPOUT ASSY
12	2-765	YES	AERATOR ASM
13	12403		AERATOR INSERT, Jr. SIZE, 1.2 GPM
14	91500		GSKT, .578 ID X .728 OD X .102 THK EPDM
15	92013		SCRW, 10-24 X 1/4 SKT HD FLT PT SS
16	2-535	YES	BASE RING, W/S SPOUT
17	91753		O-RING, # 2-136, EP, 50 DURO - GREY
18	1-164		WALL MOUNT QICK CONNECT ASM
19	91114		O-RING, #2- 116, EPDM, 65-75 DURO, NSF 61
20	10159		HEX KEY, 3/32 ALLOY STEEL

TRIM KIT, WALL LAV, 3-1771
3-1771

REV E EN-4640-3 04/19/23 APPROVED RS

NEWPORT BRASS.

t: 949.417.5207 | www.newportbrass.com