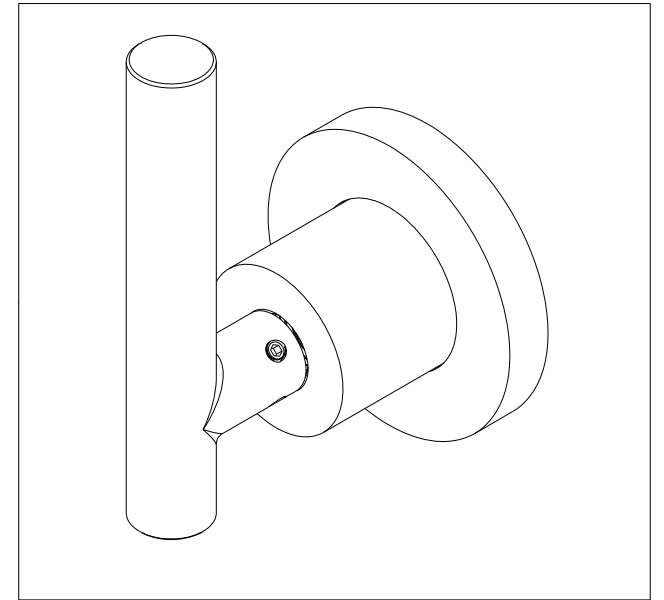
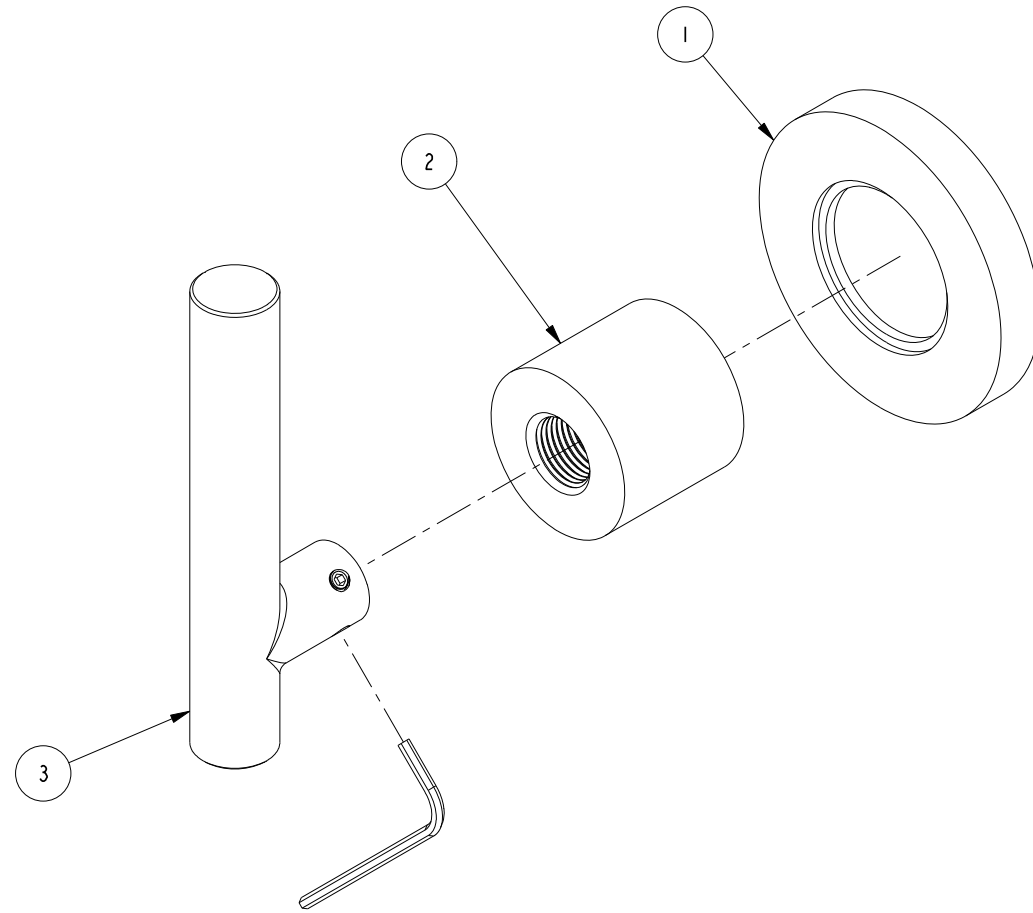


NOTES:

1. TO INSPECT ASSEMBLY, FOLLOW FIRST ARTICLE AND IN PROCESS INSPECTION SHEET.

BILL OF MATERIAL (CURRENT LEVEL)				
ITEM	PT/ASSY	DESCRIPTION	TYPE	QTY.
1	2-100	ESCUTCHEON - ASSEMBLY	ASSEMBLY	1
2	10620	BONNET	PART	1
3	2-111H	HANDLE LEVER ASM, HOT	ASSEMBLY	1



REV	DESCRIPTION	DATE	APPROVED
C	EN-4585-1	03/02/23	R.S.
B	EN-4300j	12/16/20	R.S.
A	EN-2032	01/08/14	
-	RELEASED	7/99	-

COPYRIGHT 2005 BRASSTECH, INC.
 THESE DRAWINGS AND THE DESIGNS
 DEPICTED HEREIN ARE THE PROPRIETARY
 PROPERTY OF BRASSTECH. ANY USE
 OR REPRODUCTION IS SUBJECT TO
 THE EXPRESS APPROVAL OF BRASSTECH.
 UNAUTHORIZED USE IS STRICTLY
 PROHIBITED. ALL RIGHTS RESERVED.

-	-	UNITS ARE: INCHES [MM]	
-	-	TOLERANCES ARE:	
-	-	FRACTIONS	DECIMALS ANGLES
1400L	1400L	±1/16"	±.0005 ±1°
NEXT ASSY	USED ON	X.XXX DENOTES CRITICAL DIMS. ALL THREADS ARE CRITICAL	
APPLICATION		DRAWN	JINSON 12/16/20
REMOVE ALL BURRS AND SHARP EDGES		CHECKED	R.S. 12/16/20
		APPROVED	R.S. 12/16/20

BRASSTECH 2001 CARNEGIE AVE.
 INCORPORATED SANTA ANA, CA 92705
 (949) 417-5207

HANDLE TRIM ASM - HOT

DWG NO. **3-227LH** REV **C**

SCALE .750 REF. - SHEET 1 OF 2

