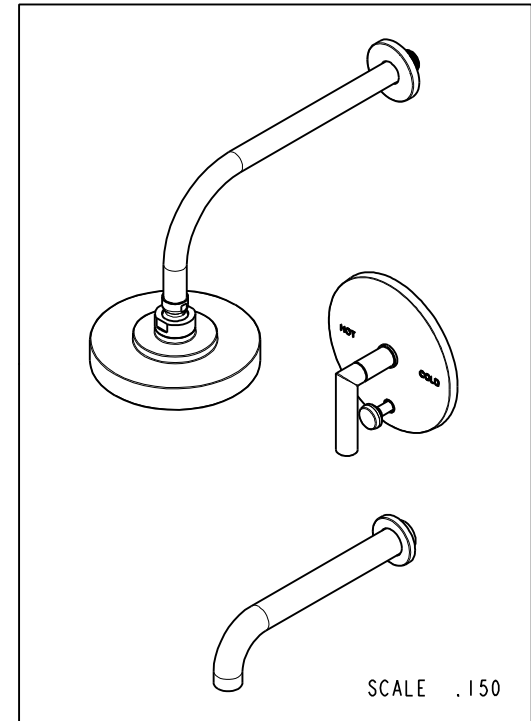
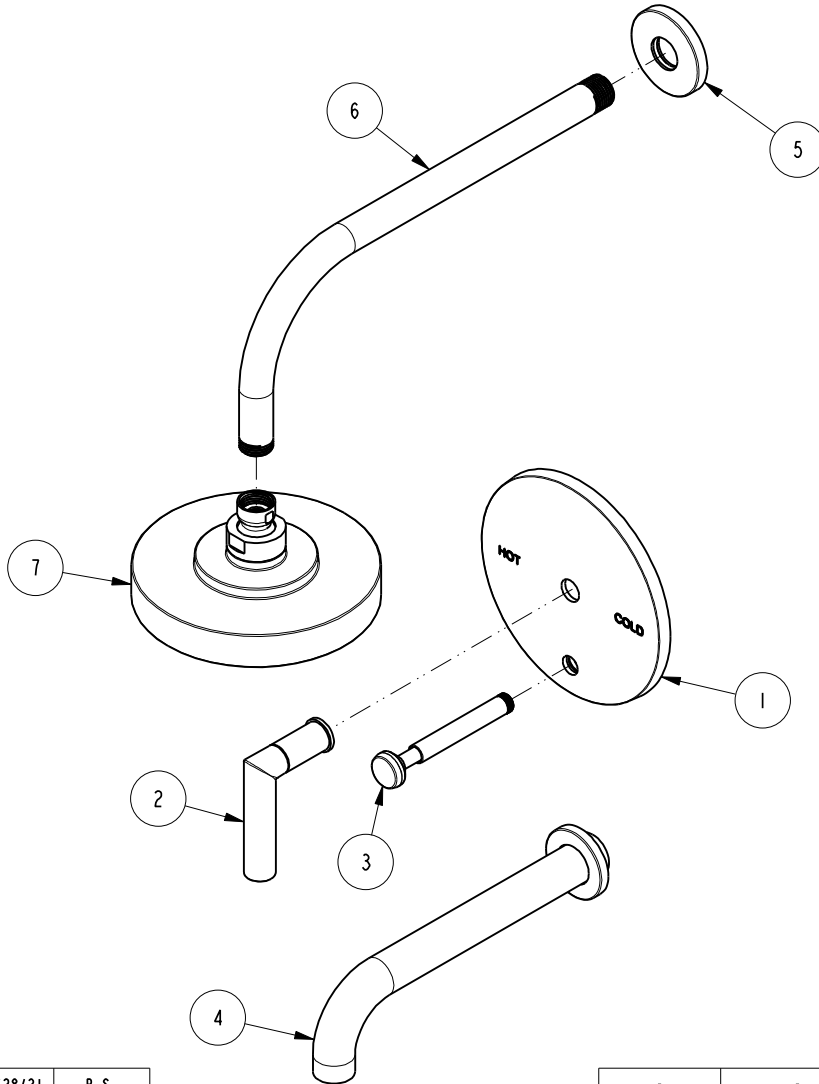


NOTES:

1. TO INSPECT ASSEMBLY, FOLLOW FIRST ARTICLE AND IN PROCESS INSPECTION SHEET.

BILL OF MATERIAL (CURRENT LEVEL)

| ITEM | PT/ASSY | DESCRIPTION                             | TYPE     | QTY. |
|------|---------|-----------------------------------------|----------|------|
| 1    | 20-501  | TUB AND SHOWER PLATE ASM                | ASSEMBLY | 1    |
| 2    | 20-107  | HANDLE ASM                              | ASSEMBLY | 1    |
| 3    | 2-217   | DIVERTER TRIM KIT                       | ASSEMBLY | 1    |
| 4    | 3-419   | SPOUT & ESCUTCHEON ASM - WALL MOUNT TUB | ASSEMBLY | 1    |
| 5    | 206-1   | SHOWER - ESCUTCHEON ASM                 | ASSEMBLY | 1    |
| 6    | 13040   | 90° 12" SHWR ARM                        | PART     | 1    |
| 7    | 2141    | CONTEMP. SHOWER HEAD - SINGLE JET       | ASSEMBLY | 1    |



| ZONE | REV | DESCRIPTION | DATE     | APPROVED |
|------|-----|-------------|----------|----------|
| -    | E   | EN-4300e    | 04/28/21 | R.S.     |
| -    | D   | EN-4154     | 06/05/20 | N.S.     |
| -    | C   | EN-3552e    | 08/14/18 | C.G.     |
| -    | B   | EN-3296     | 03/30/17 | J.M.     |
| -    | A   | EN-3254     | 02/02/17 | AN       |
| -    | -   | EN-3032d    | 07/13/16 | AN       |

COPYRIGHT 2005 BRASSTECH, INC. THESE DRAWINGS AND THE DESIGNS DEPICTED HEREIN ARE THE PROPRIETARY PROPERTY OF BRASSTECH. ANY USE OR REPRODUCTION IS SUBJECT TO THE EXPRESS APPROVAL OF BRASSTECH. UNAUTHORIZED USE IS STRICTLY PROHIBITED. ALL RIGHTS RESERVED.

| TESTING | ASSEMBLY | PLATING | POLISHING | MACHINING | TOOLING FIXTURE # | APPLICATION                      |
|---------|----------|---------|-----------|-----------|-------------------|----------------------------------|
| -       | -        | -       | -         | -         | -                 | REMOVE ALL BURRS AND SHARP EDGES |
| -       | -        | -       | -         | -         | -                 | -                                |
| -       | -        | -       | -         | -         | -                 | -                                |
| -       | -        | -       | -         | -         | -                 | -                                |
| -       | -        | -       | -         | -         | -                 | -                                |

|                                                       |        |
|-------------------------------------------------------|--------|
| UNITS ARE: INCHES [MM]                                |        |
| TOLERANCES ARE:                                       |        |
| FRACTIONS DECIMALS                                    | ANGLES |
| ±1/16"                                                | ±1°    |
| .x ±.1 [2,5]                                          |        |
| .xx ±.06 [1,5]                                        |        |
| ⓧ.xxx DENOTES CRITICAL DIMS. ALL THREADS ARE CRITICAL |        |
| DRAWN                                                 | JINSON |
| 04/28/21                                              |        |
| CHECKED                                               | R.S.   |
| 04/28/21                                              |        |
| APPROVED                                              | R.S.   |
| 04/28/21                                              |        |

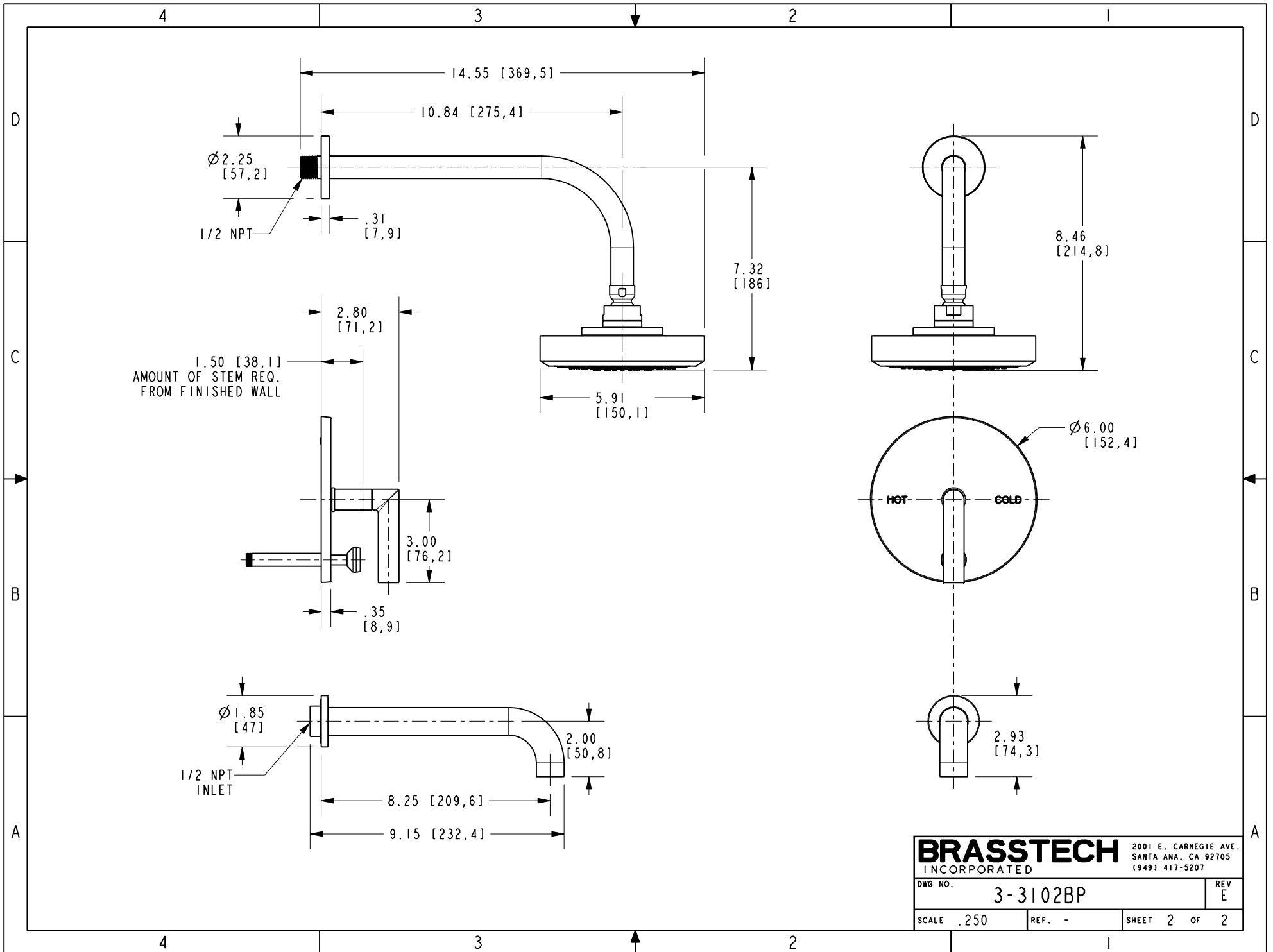
**BRASSTECH** INCORPORATED  
 2001 CARNEGIE AVE.  
 SANTA ANA, CA 92705  
 (949) 417-5207

BP TUB & SHOWER TRIM SET

DWG NO. 3-3102BP

SCALE .220 REF. - SHEET 1 OF 2

REV E



|                  |          |                                                                |          |
|------------------|----------|----------------------------------------------------------------|----------|
| <b>BRASSTECH</b> |          | 2001 E. CARNEGIE AVE.<br>SANTA ANA, CA 92705<br>(949) 417-5207 |          |
| DWG NO.          | 3-3102BP |                                                                | REV<br>E |
| SCALE .250       | REF. -   | SHEET 2                                                        | OF 2     |