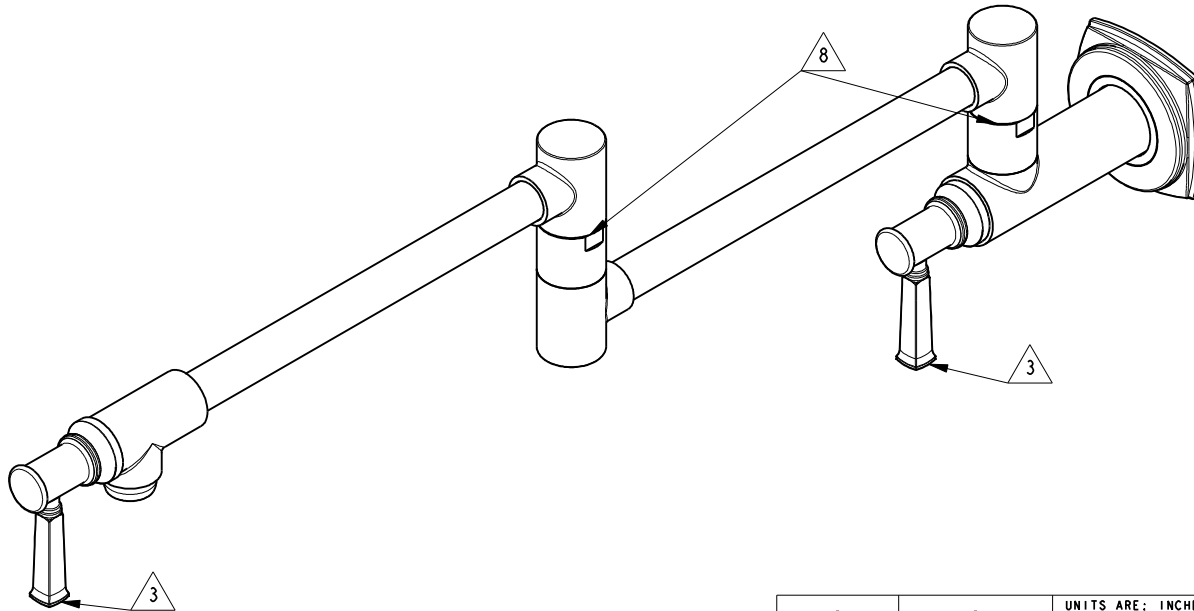


NOTES:

1. TO INSPECT ASSEMBLY, FOLLOW FIRST ARTICLE AND IN PROCESS INSPECTION SHEET.
2. PACK THESE ITEMS IN A PLASTIC BAG.
3. HANDLE IN CLOSE POSITION.
4. INSTALLATION TORQUE 11-14 LB-FT.
5. INSTALLATION TORQUE 4-6 LB-FT.
6. APPLY LOCTITE 680.
7. APPLY LOCTITE 242
8. SWIVEL CONNECTION SHALL NOT HAVE NOTICEABLE WOBBLINESS AFTER ASSEMBLY.

BILL OF MATERIAL (CURRENT LEVEL)

ITEM	PT/ASSY	DESCRIPTION	TYPE	QTY.
1	11330	VALVE BODY, WALL-END	PART	1
2	11309	FLANGE, MOUNTING	PART	1
3	92223	SCRW, #8 X 2-1/2 PHL FLT HD SS	PART	4
4	92231	SCRW, 1/4-20 X 1/4 SKT HD CUP PT SS	PART	1
5	20-251	FLANGE ASM	ASSEMBLY	1
6	2-553	LOWER ARM ASM, CONTEMP	ASSEMBLY	1
7	2-552	UPPER ARM ASM, CONTEMP	ASSEMBLY	1
8	1-326	W/S CARTRIDGE FRICTION - HOT	PART	1
9	12750	ADAPTER	PART	2
10	12705	HANDLE HUB	PART	2
11	92862	SCRW, M4 X 18 SKT FLT HD SS	PART	2
12	1-437	CARTR 3/8 HOT 1/4 TR	PART	1
13	20-283	CAP ASM	ASSEMBLY	2



ZONE	REV	DESCRIPTION	DATE	APPROVED
-	D	EN-4300q	11/20/20	R.S.
-	C	EN-4112	03/24/20	J.M.
-	B	EN-3756	11/23/18	C.G.
-	A	EN-3693	08/28/18	J.M.
-	-	EN-3229	03/11/17	J.M.

COPYRIGHT 2005 BRASSTECH, INC. THESE DRAWINGS AND THE DESIGNS DEPICTED HEREIN ARE THE PROPRIETARY PROPERTY OF BRASSTECH. ANY USE OR REPRODUCTION IS SUBJECT TO THE EXPRESS APPROVAL OF BRASSTECH. UNAUTHORIZED USE IS STRICTLY PROHIBITED. ALL RIGHTS RESERVED.

TESTING	ASSEMBLY	PLATING	POLISHING	MACHINING	TOOLING FIXTURE #	APPLICATION
-	-	-	-	-	-	REMOVE ALL BURRS AND SHARP EDGES
-	-	-	-	-	-	-
-	-	-	-	-	-	-
-	-	-	-	-	-	-
-	-	-	-	-	-	-

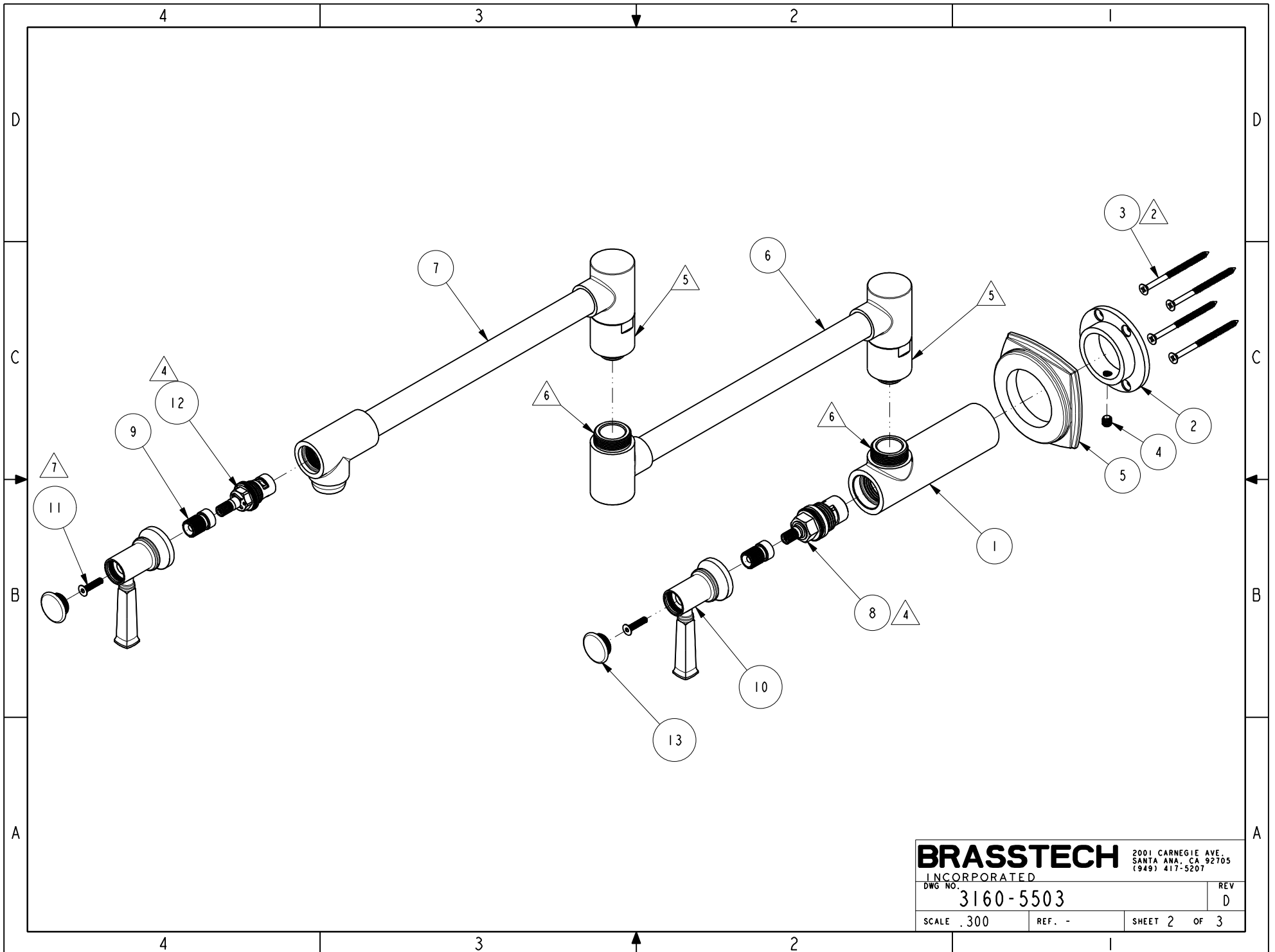
UNITS ARE: INCHES [MM]	
TOLERANCES ARE:	
FRACTIONS DECIMALS	ANGLES
±1/16"	.X ±.1 [2.5] ±1°
	.XX ±.06 [1.5]
(X.XXX) DENOTES CRITICAL DIMS.	
ALL THREADS ARE CRITICAL	
DRAWN	JINSON 11/20/20
CHECKED	R.S. 11/20/20
APPROVED	R.S. 11/20/20

BRASSTECH 2001 CARNEGIE AVE. SANTA ANA, CA 92705 (949) 417-5207
INCORPORATED

POT FILLER

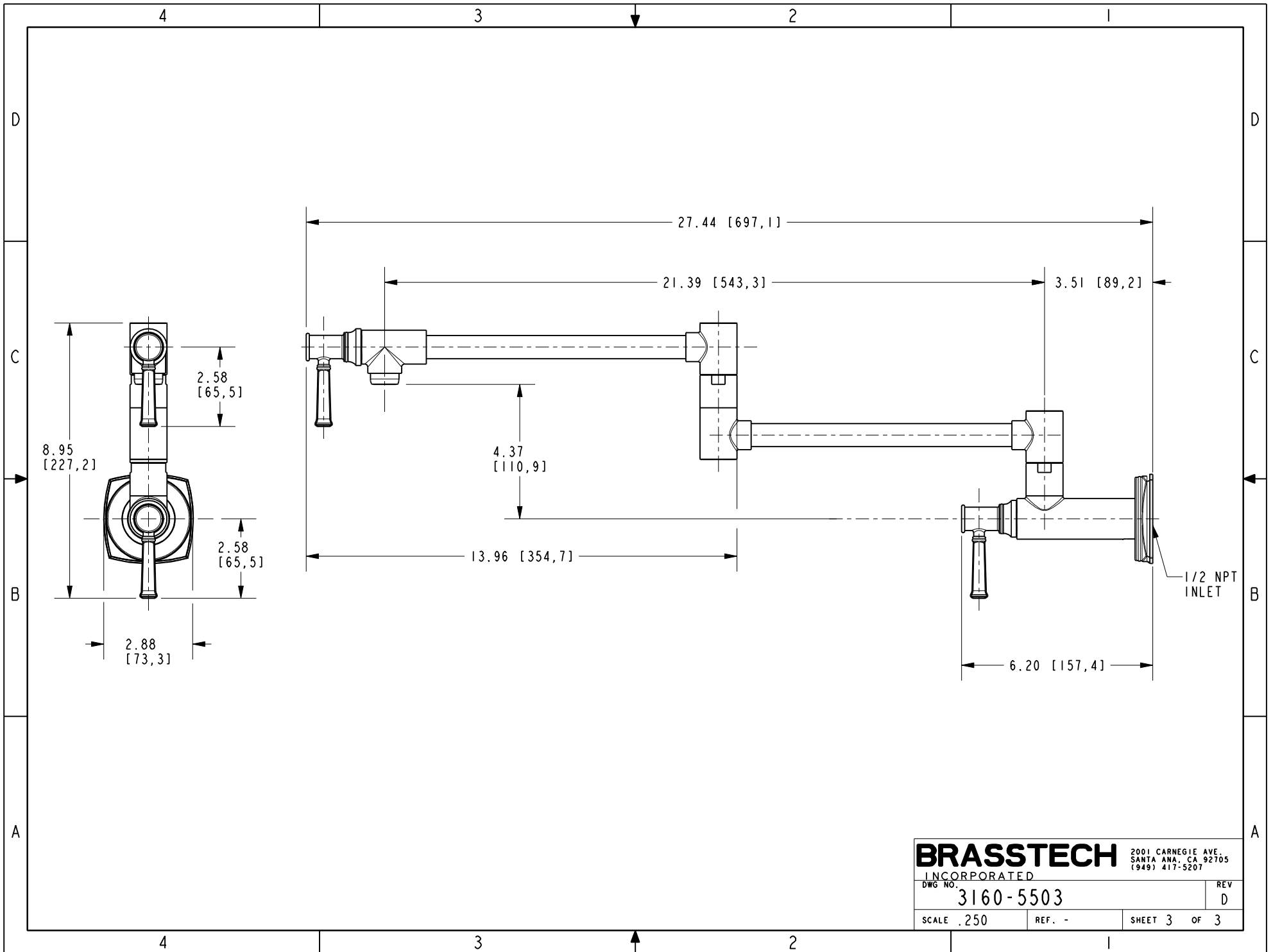
DWG NO. 3160-5503 REV D

SCALE .300 REF. - SHEET 1 OF 3



BRASSTECH 2001 CARNEGIE AVE.
 INCORPORATED SANTA ANA, CA 92705
 (949) 417-5207

DWG NO.	3160-5503	REV	D
SCALE	.300	REF.	-
SHEET 2		OF 3	



BRASSTECH		2001 CARNEGIE AVE. SANTA ANA, CA 92705 (949) 417-5207
INCORPORATED		
DWG NO.	3160-5503	REV D
SCALE .250	REF. -	SHEET 3 OF 3