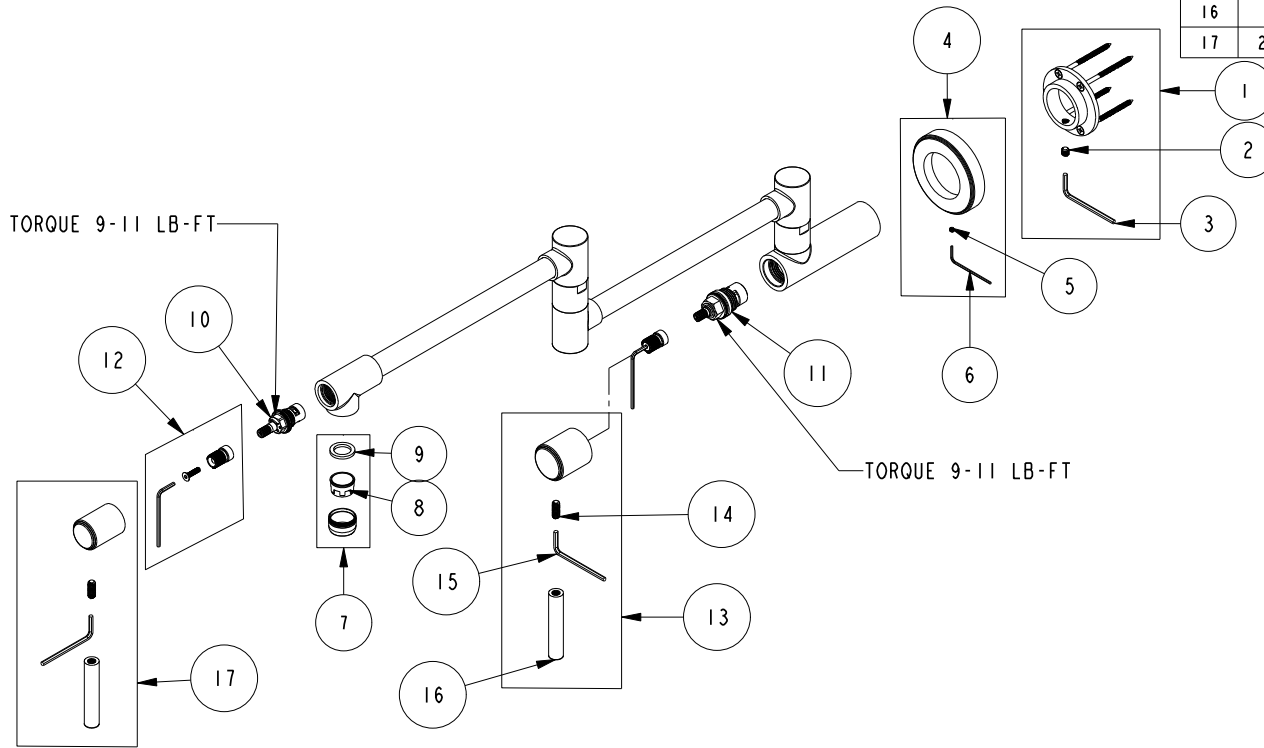


REPLACEMENT PARTS

ITEM	PT/ASSY	SPECIFY FINISH	DESCRIPTION
1	20-744	YES	MOUNTING KIT
2	92231		SCRW, 1/4-20 X 1/4 SKT HD CUP PT SS
3	92422		HEX KEY, 1/8" ALLOY STEEL
4	20-253	YES	FLANGE ASM, CONTEMP
5	92232		SCRW, 6-32 X 1/8 SKT HD FTL PT SS
6	92236		HEX KEY, 1/16 ALLOY STEEL
7	2-563	YES	AERATOR ASM
8	11347		CASCADE AERATOR-REG SIZE-FULL FLOW
9	91014		WSHR, .59 ID X .84 OD X .095 THK, FLT, RUBBER NSF 61
10	1-437		CARTR 3/8 HOT 1/4 TR
11	1-326		W/S CARTRIDGE FRICTION - HOT
12	10-312		CARTRIDGE STEM ADAPTER KIT
13	20-762	YES	HANDLE LEVER ASM
14	92005		SCRW, 1/4-20 X 5/8 SKT HD CUP PT SS
15	92422		HEX KEY, 1/8" ALLOY STEEL
16	11017	YES	LEVER HANDLE
17	20-763	YES	HANDLE LEVER ASM



POT FILLER, CONTEMP
3180-5503

REV E EN-4682 07/12/23 APPROVED RS

NEWPORT BRASS.

t: 949.417.5207 | www.newportbrass.com