

4

3

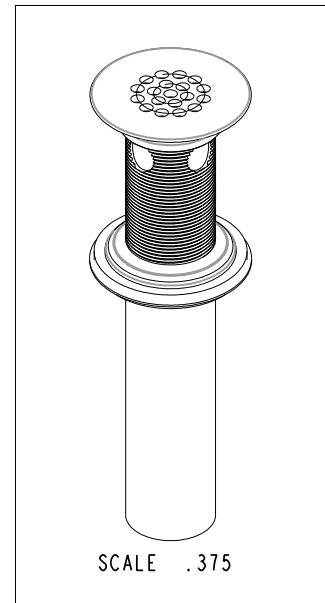
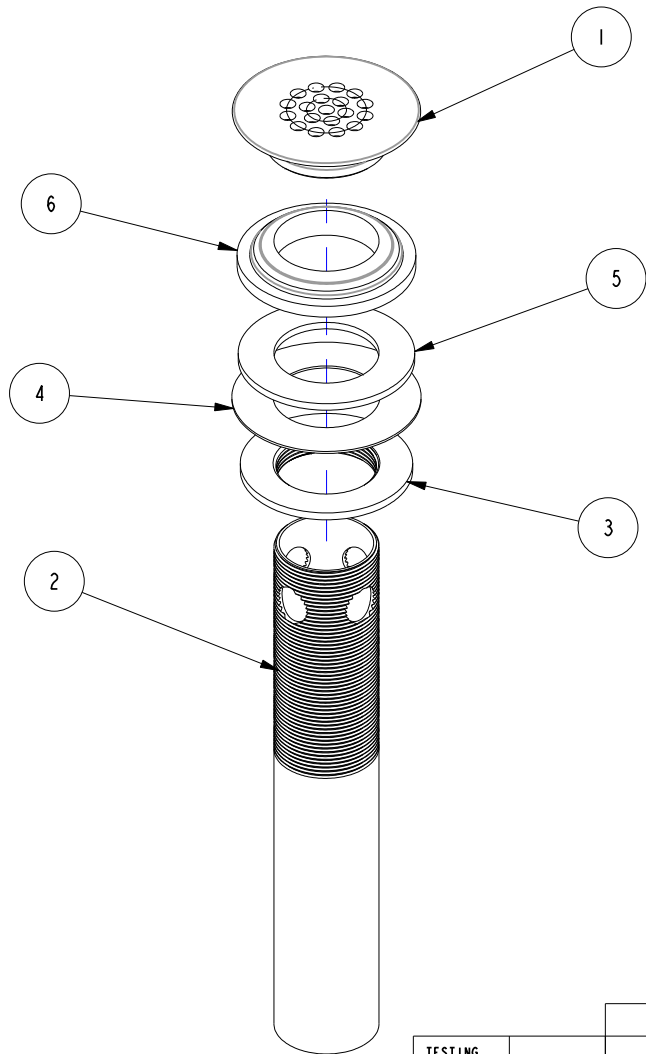
2

NOTES:

(N1) 1. TO INSPECT ASSEMBLY, FOLLOW FIRST ARTICLE AND IN PROCESS INSPECTION SHEET.

BILL OF MATERIAL (CURRENT LEVEL)

ITEM	PT/ASSY	DESCRIPTION	TYPE	QTY.
1	50459	DRAIN GRID BODY	PART	1
2	50335	TLPP 1.25" OD X 7" (320)	PART	1
3	10209	MNT'G NUT - DRAIN FL	PART	1
4	50029	WSHR, 1.34 ID X 2.25 OD X .05 THK.	PART	1
5	91196	WASHER - 1-1/4 ID X .094 THK	PART	1
6	91197	WASHER - 1-1/4 MOLDED	PART	1



TESTING	-	-	-
ASSEMBLY	-	-	-
PLATING	-	-	-
POLISHING	-	NEXT ASSY	USED ON
MACHINING	-	APPLICATION	
TOOLING FIXTURE #	REMOVE ALL BURRS AND SHARP EDGES		

UNITS ARE: INCHES [MM]
 TOLERANCES ARE:
 FRACTIONS DECIMALS ANGLES
 $\pm 1/16"$ $.X \pm .1 [2.5]$ $\pm 1^\circ$
 $.XX \pm .06 [1.5]$
 (X.XXX) DENOTES CRITICAL DIMS.
 ALL THREADS ARE CRITICAL

BRASSTECH 2001 CARNEGIE AVE.
 INCORPORATED SANTA ANA, CA 92705
 (949) 417-5207

DRAIN GRID STRAINER

ZONE	REV	DESCRIPTION	DATE	APPROVED
-	B	EN-430011	10/22/21	N.S.
-	A	EO-0646	1/30/06	-
-	-	RELEASED	PRE '95	-

COPYRIGHT 2005 BRASSTECH, INC.
 THESE DRAWINGS AND THE DESIGNS
 DEPICTED HEREIN ARE THE PROPRIETARY
 PROPERTY OF BRASSTECH. ANY USE
 OR REPRODUCTION IS SUBJECT TO
 THE EXPRESS APPROVAL OF BRASSTECH.
 UNAUTHORIZED USE IS STRICTLY
 PROHIBITED. ALL RIGHTS RESERVED.

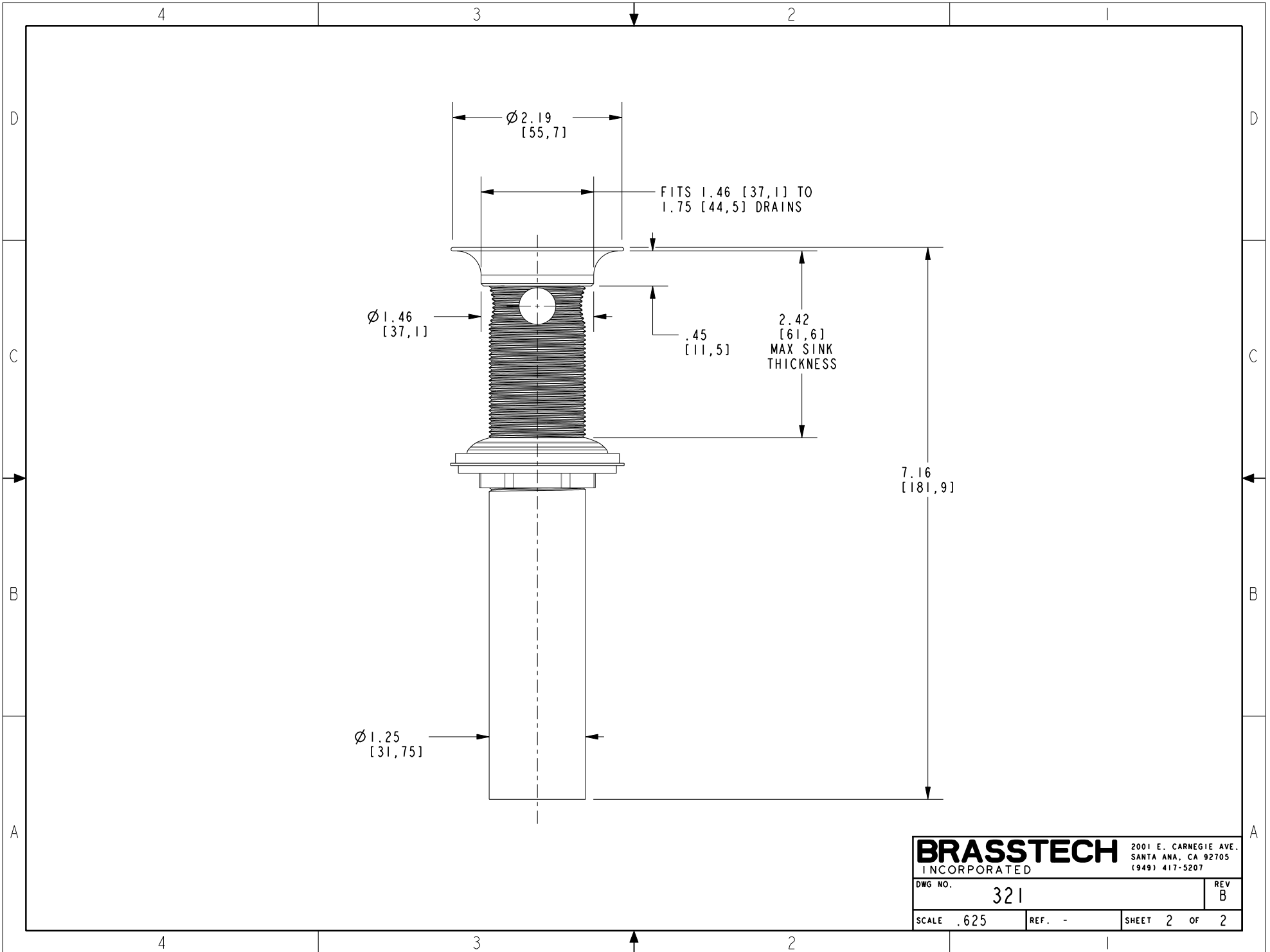
DRAWN	HMS	10/22/21	DWG NO.	321	REV	B
CHECKED	W. SANTOS	10/22/21	SCALE	.438	REF.	-
APPROVED	W. SANTOS	10/22/21	SHEET	1	OF	2

4

3

2

1



BRASSTECH		2001 E. CARNEGIE AVE.	
INCORPORATED		SANTA ANA, CA 92705	
		(949) 417-5207	
DWG NO.	321	REV	B
SCALE .625	REF. -	SHEET 2	OF 2