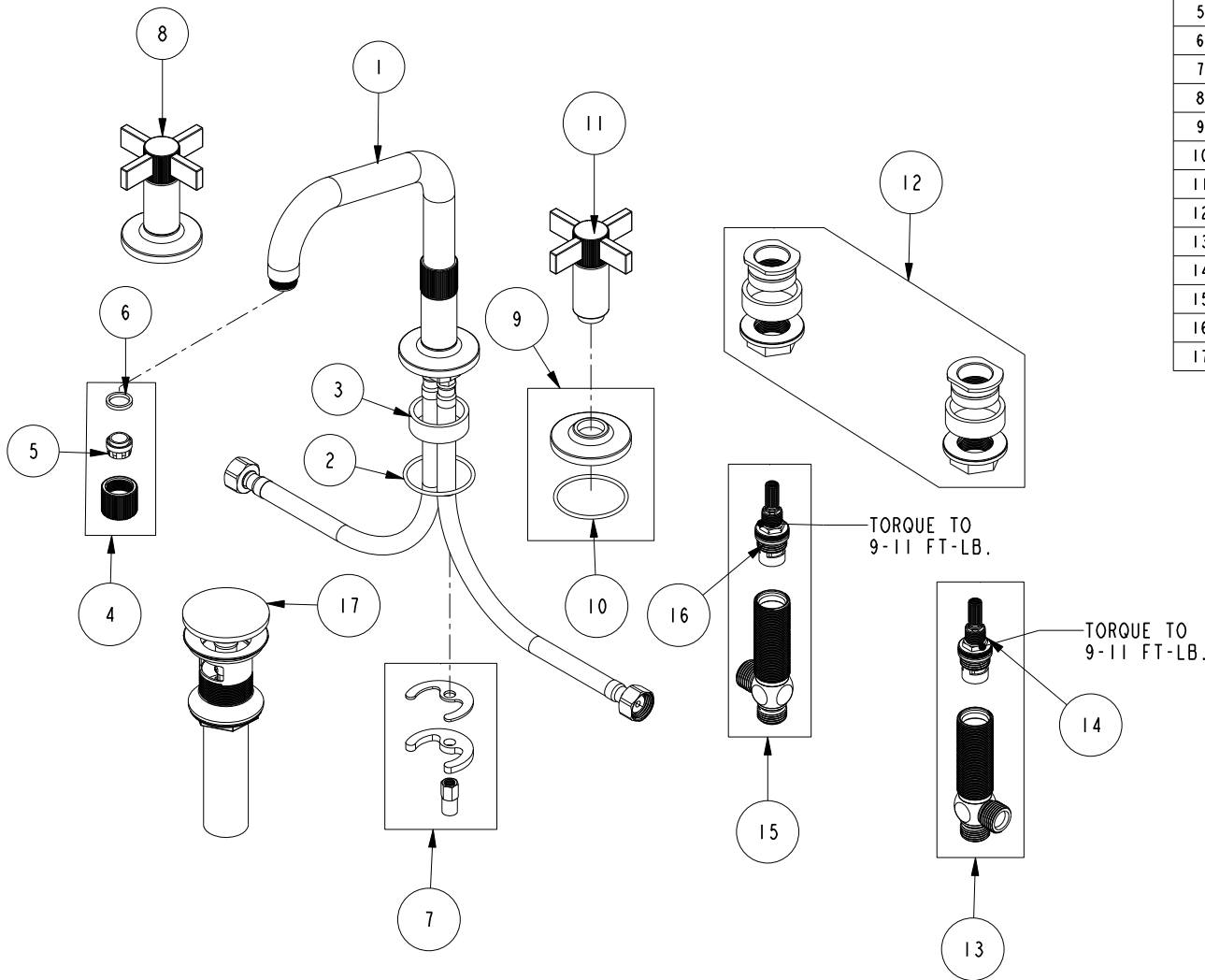


# REPLACEMENT PARTS



ITEM	PT/ASSY	SPECIFY FINISH	DESCRIPTION
1	3-632	YES	W/S SPOUT ASM
2	91773		O-RING, #2-133, 50 DURO
3	10382		QUICK CONNECT SPACER
4	20-440	YES	AERATOR ASM
5	12403		AERATOR INSERT, Jr. SIZE, 1.2 GPM
6	91500		GSKT, .578 ID X .728 OD X .102 THK EPDM
7	1-491		SPOUT MOUNTING KIT
8	3-645	YES	CROSS HANDLE W/ESC.
9	20-431	YES	ESCUTCHEON ASM
10	91756		O-RING #2-134, EP, 50 DURO - GREY
11	20-426	YES	CROSS HANDLE ASM
12	1-226		WIDESPREAD MOUNTING HARDWARE
13	1-527		W/S CART/BODY ASM (HOT)
14	1-002		W/S CARTRIDGE - HOT
15	1-526		W/S CART/BODY ASM (COLD)
16	1-001		W/S CARTRIDGE - COLD
17	330	YES	DRAIN, PUSH DOWN, W/ OVERFLOW

**WIDESPREAD FAUCET  
3240**

REV D EN-4728 11/06/23 APPROVED RS

**NEWPORT BRASS.**

t: 949.417.5207 | www.newportbrass.com