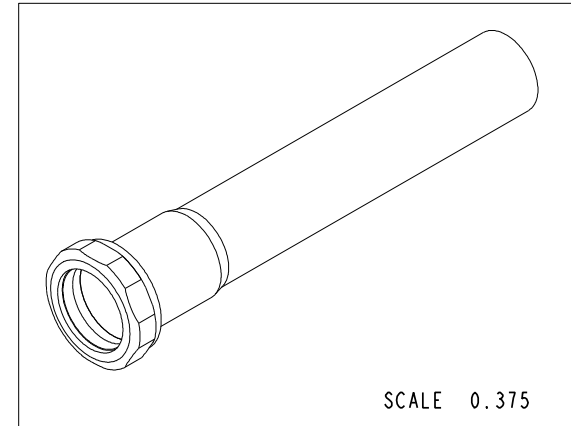
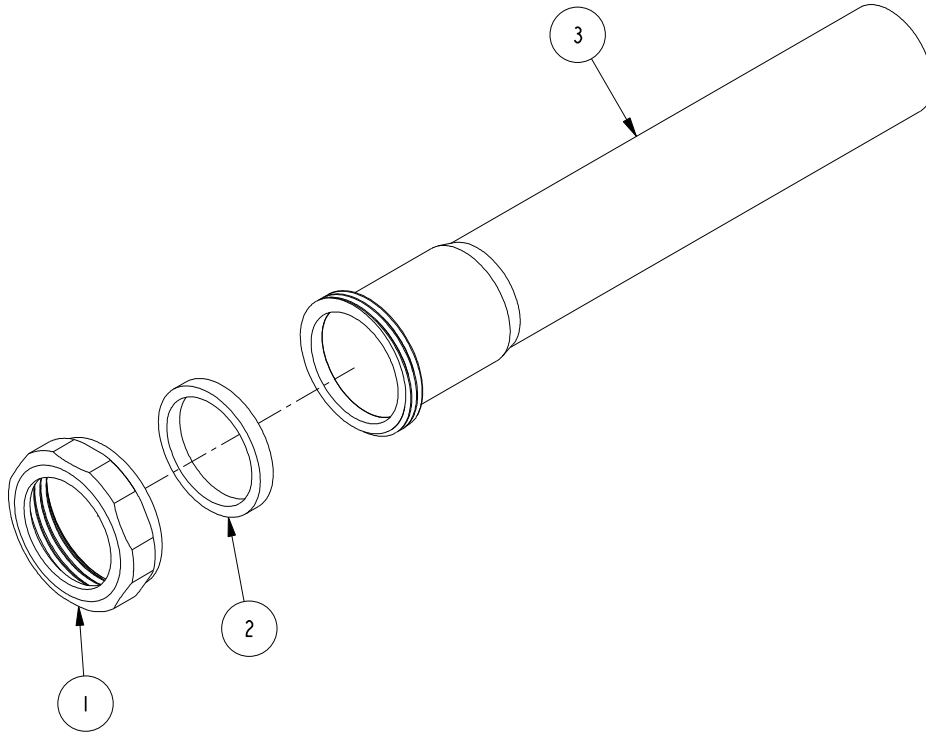


NOTES:

1. TO INSPECT ASSEMBLY, FOLLOW FIRST ARTICLE AND IN PROCESS INSPECTION SHEET.

**BILL OF MATERIAL (CURRENT LEVEL)**

ITEM	PT/ASSY	DESCRIPTION	TYPE	QTY.
1	50321	LOCKNUT 1.25" BRS (301)	PART	1
2	91193	WSHR, 1.25 ID X 1.5 OD X .19 THK, FLT, RUBBER	PART	1
3	50347	TUBE, SLIP 1.25" (328)	PART	1



ZONE	REV	DESCRIPTION	DATE	APPROVED
-	A	EN-430011	10/21/21	R. S.
-	-	EN-2537	05/16/13	-

COPYRIGHT 2005 BRASSTECH, INC. THESE DRAWINGS AND THE DESIGNS DEPICTED HEREIN ARE THE PROPRIETARY PROPERTY OF BRASSTECH. ANY USE OR REPRODUCTION IS SUBJECT TO THE EXPRESS APPROVAL OF BRASSTECH. UNAUTHORIZED USE IS STRICTLY PROHIBITED. ALL RIGHTS RESERVED.

TESTING	-	-	-
ASSEMBLY	-	-	-
PLATING	-	-	-
POLISHING	-	NEXT ASSY	USED ON
MACHINING	-	APPLICATION	
TOOLING FIXTURE #	REMOVE ALL BURRS AND SHARP EDGES		

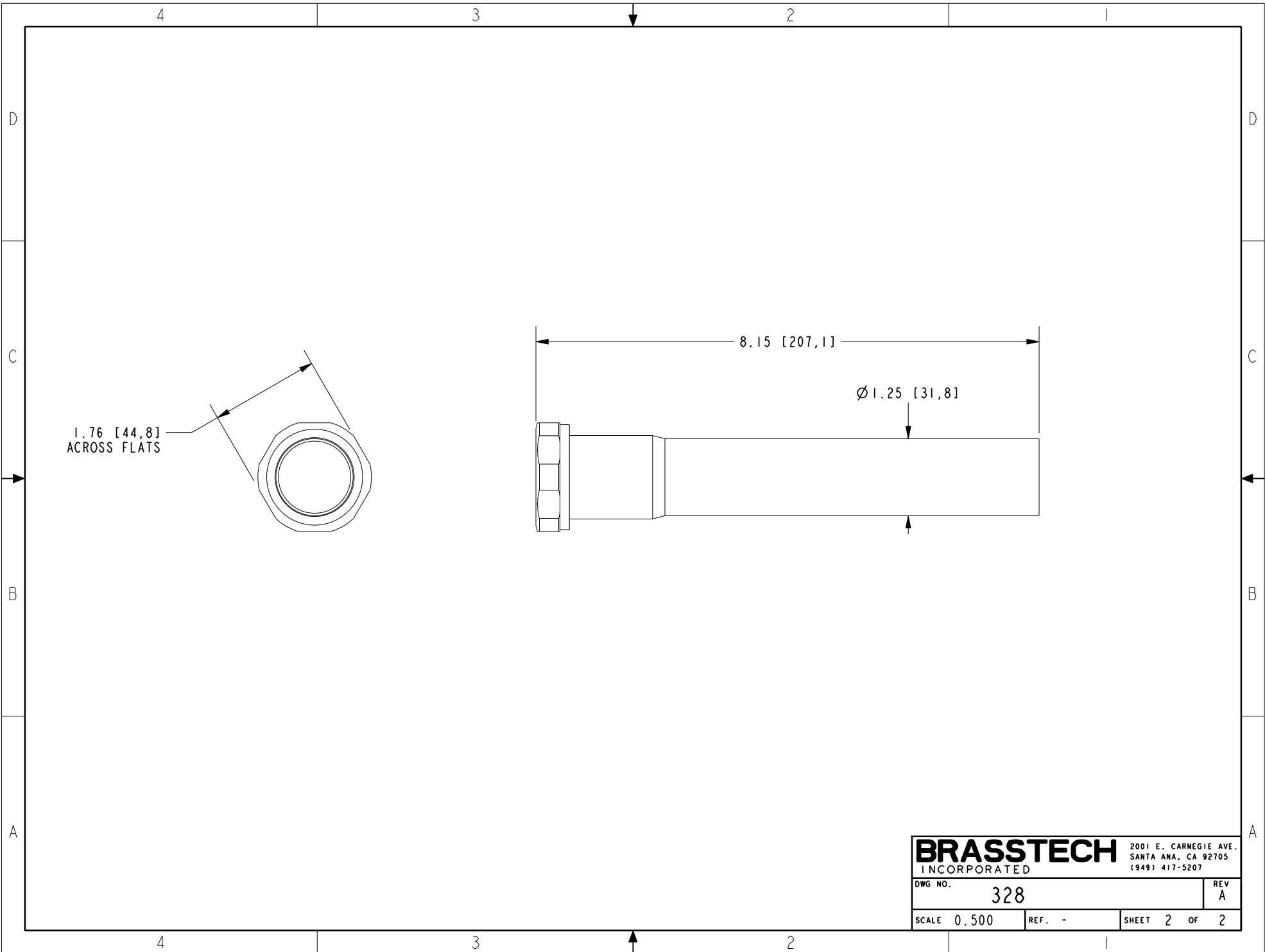
UNITS ARE: INCHES [MM]	
TOLERANCES ARE:	
FRACTIONS	DECIMALS
±1/16"	.X ±.1 [2.5]
	.XX ±.06 [1.5]
ANGLES ±1°	
(X.XXX) DENOTES CRITICAL DIMS.	
ALL THREADS ARE CRITICAL	
DRAWN	05/16/13
CHECKED	05/16/13
APPROVED	05/16/13

**BRASSTECH** 2001 CARNEGIE AVE.  
INCORPORATED SANTA ANA, CA 92705  
(949) 417-5207

**EXTENSION TUBE 1-1/4" O.D.**

DWG NO. **328** REV **A**

SCALE 0.500 REF. - SHEET 1 OF 2



1.76 [44,8]  
ACROSS FLATS

8.15 [207,1]

Ø 1.25 [31,8]

<b>BRASSTECH</b>		2001 E. CARNEGIE AVE. SANTA ANA, CA 92705 (949) 417-5207	
DWG NO.	328	REV	A
SCALE	0.500	REF.	-
		SHEET	2 OF 2