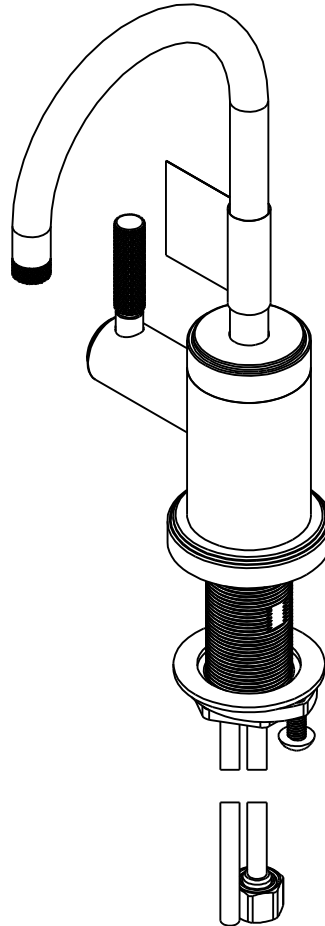


NOTES:

1. TO INSPECT ASSEMBLY, FOLLOW FIRST ARTICLE AND IN PROCESS INSPECTION SHEET.
2. APPLY LOCTITE 242.
3. CUT AND SHORTEN O-RING BY .13" TO .02" IN LENGTH BEFORE INSTALLING
4. SLIT O-RING BEFORE INSTALLING
5. INSTALLATION TORQUE: 10-14 LB-IN
6. CONNECT WHITE AND RED TUBING TOGETHER AND WATER TEST WHOLE UNIT
7. BAG 92194 IN A SEPARATE BAG
8. REWORK CARTRIDGE ASSY IF THE HANDLE DOES NOT RETURN TO THE "OFF" POSITION AUTOMATICALLY AFTER WATER TESTING
9. INSTALLATION TORQUE: 8-14 LB-FT
10. INSTALLATION TORQUE: 78 LB-IN +/-6 LB-IN.
11. LUBRICATE SPRING WITH DOW CORNING 111 SILICONE COMPOUND
12. APPLY LIGHT FILM OF DOW CORNING 111 SILICONE COMPOUND



BILL OF MATERIAL (CURRENT LEVEL)

ITEM	PT/ASSY	DESCRIPTION	TYPE	QTY.
1	12693	ESCUTCHEON	PART	1
2	91768	O-RING, #2-130, EP, 50 DURO - GREY	PART	1
3	13604	WATER DISP. BODY HOT (CONT.)	PART	1
4	13686	BODY CAP	PART	1
5	91023	O-RING, #2- 019, EPDM, 65-75 DURO, NSF 61	PART	1
6	20-520	SPOUT ASM	ASSEMBLY	1
7	91382	O-RING, #2- 012, TEFLON,	PART	1
8	91017	O-RING #2-012	PART	2
9	91383	O-RING, #2- 014, TEFLON, NSF 61	PART	1
10	5-067	3/8 SELF CLOSING CART. ASM.	ASSEMBLY	1
11	13685	HANDLE HUB	PART	1
12	13790	WATER DISP LEVER	PART	1
13	1-431	RED SUPPLY LINE	ASSEMBLY	1
14	1-433	GREY SUPPLY LINE	ASSEMBLY	1
15	1-432	BLUE SUPPLY LINE	ASSEMBLY	1
16	13070	RETAINER PLATE	PART	1
17	92016	SCRW, 10-24 X 3/4 SKT HD FLT PT SS	PART	1
18	98043	TAG LABEL, HOT WATER WARNING	PART	1
19	13289	NIPPLE	PART	1
20	1-393	1-1/8 18 UNEF MOUNTING KIT	ASSEMBLY	1
21	92194	COUPLING, 3/8" X 1/4"	PART	1
22	92017	SCRW, 1/4-20 X 3/16 SKT HD CUP PT SS	PART	1

ZONE	REV	DESCRIPTION	DATE	APPROVED
-	E	EN-4187	10/25/22	J.M.
-	B	EN-4300jj	04/12/21	R.S.
-	A	EN-3634A	12/04/19	C.G.
-	-	EN-3881a	11/04/19	J.M.

COPYRIGHT 2005 BRASSTECH, INC. THESE DRAWINGS AND THE DESIGNS DEPICTED HEREIN ARE THE PROPRIETARY PROPERTY OF BRASSTECH. ANY USE OR REPRODUCTION IS SUBJECT TO THE EXPRESS APPROVAL OF BRASSTECH. UNAUTHORIZED USE IS STRICTLY PROHIBITED. ALL RIGHTS RESERVED.

TESTING	-	-	-
ASSEMBLY	-	-	-
PLATING	-	-	-
POLISHING	-	NEXT ASSY	USED ON
MACHINING	-	APPLICATION	
TOOLING FIXTURE #	REMOVE ALL BURRS AND SHARP EDGES		

UNITS ARE: INCHES [MM]
TOLERANCES ARE:
FRACTIONS DECIMALS ANGLES
±1/16" .X ±.1 [2,5] ±1°
.XX ±.06 [1,5]

(X.XXX) DENOTES CRITICAL DIMS.
ALL THREADS ARE CRITICAL

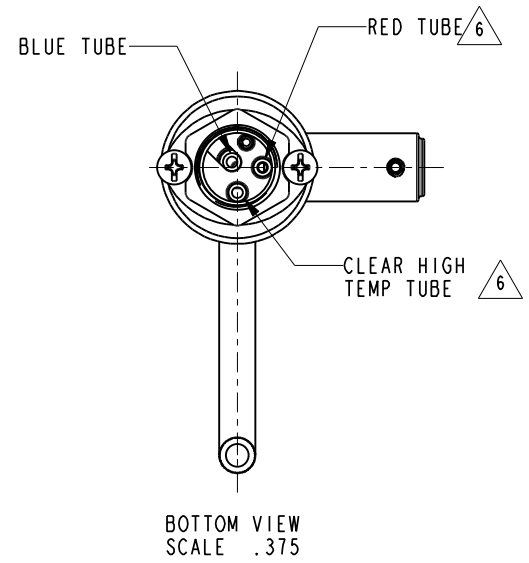
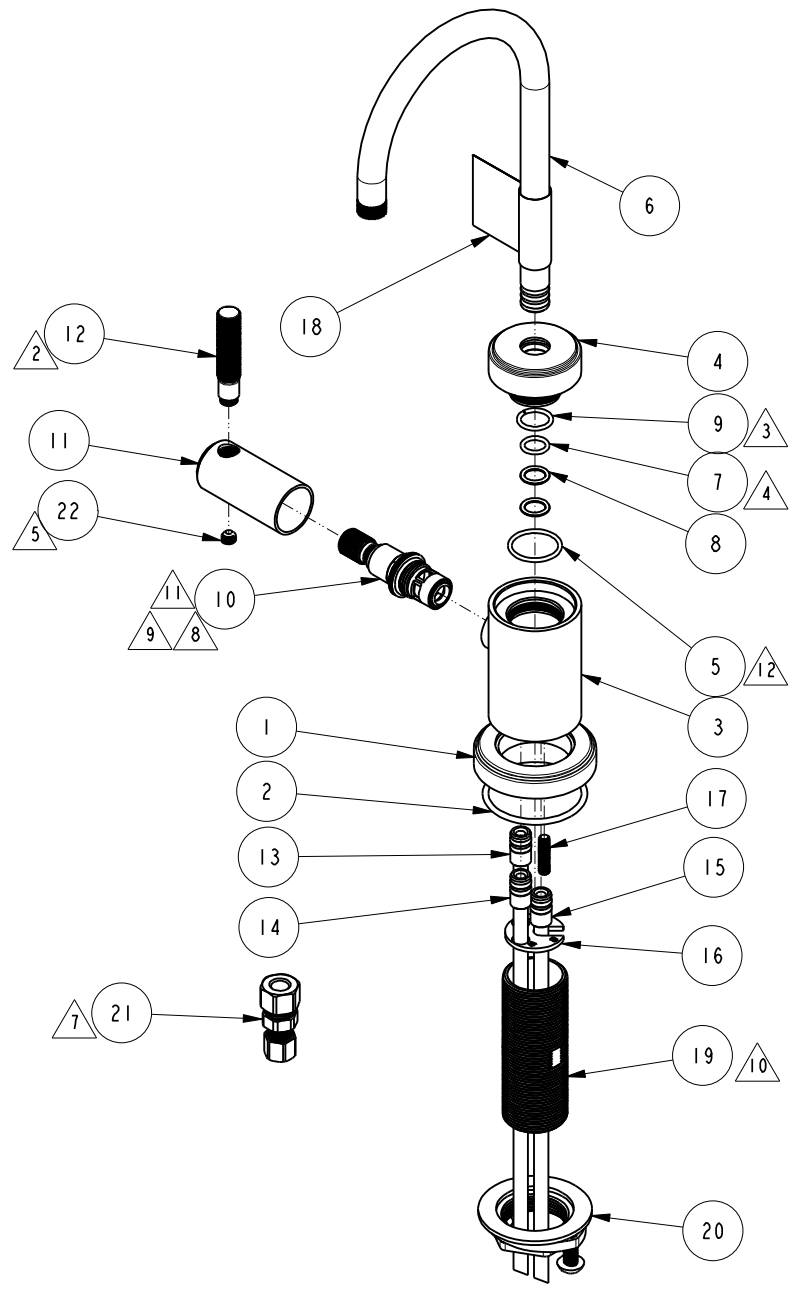
DRAWN	JINSON	10/25/22
CHECKED	G.B.	10/25/22
APPROVED	J.M.	10/25/22

BRASSTECH 2001 CARNEGIE AVE.
INCORPORATED SANTA ANA, CA 92705
(949) 417-5207

WATER DISPENSER - HOT

DWG NO. **3290-5613** REV **E**

SCALE .400 REF. - SHEET 1 OF 3



BRASSTECH		2001 E. CARNEGIE AVE. SANTA ANA, CA 92705 (949) 417-5207	
DWG NO.	3290-5613	REV	E
SCALE .300	REF. -	SHEET 2	OF 3

