

4

3

2

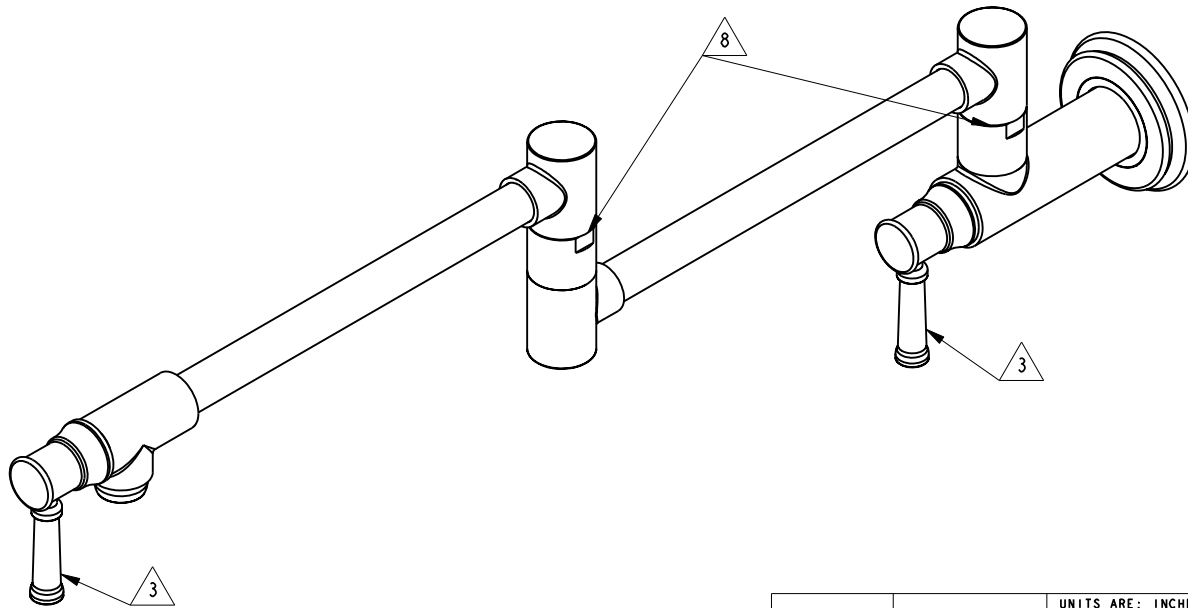
1

NOTES:

- (NI) 1. TO INSPECT ASSEMBLY, FOLLOW FIRST ARTICLE AND IN PROCESS INSPECTION SHEET.
- 2. PACK THESE ITEMS IN A PLASTIC BAG.
- 3. HANDLE IN CLOSE POSITION.
- 4. INSTALLATION TORQUE 11-14 LB-FT.
- 5. INSTALLATION TORQUE 4-6 LB-FT.
- 6. APPLY LOCTITE 680.
- 7. APPLY LOCTITE 242
- 8. SWIVEL CONNECTION SHALL NOT HAVE NOTICEABLE WOBBLINESS AFTER ASSEMBLY.

BILL OF MATERIAL (CURRENT LEVEL)

ITEM	PT/ASSY	DESCRIPTION	TYPE	QTY.
1	11330	VALVE BODY, WALL-END	PART	1
2	11309	FLANGE, MOUNTING	PART	1
3	92223	SCRW, #8 X 2-1/2 PHL FLT HD SS	PART	4
4	92231	SCRW, 1/4-20 X 1/4 SKT HD CUP PT SS	PART	1
5	20-599	FLANGE ASM	ASSEMBLY	1
6	2-553	LOWER ARM ASM, CONTEMP	ASSEMBLY	1
7	2-552	UPPER ARM ASM, CONTEMP	ASSEMBLY	1
8	1-326	W/S CARTRIDGE FRICTION - HOT	PART	1
9	92925	ADAPTER	PART	2
10	92477	SCRW, M4 X 16 SKT FLT HD SS	PART	2
11	13636	HANDLE HUB	PART	2
12	92192	SCRW, 10-32 X 5/8 SKT HD CUP PT SS	PART	2
13	13625	LEVER HANDLE	PART	2
14	1-437	CARTR 3/8 HOT 1/4 TR	PART	1



TESTING	-	-	-	UNITS ARE: INCHES [MM]
ASSEMBLY	-	-	-	TOLERANCES ARE:
PLATING	-	-	-	FRACTIONS DECIMALS ANGLES
POLISHING	-	-	-	±1/16" .X ±.1 [2,5] ±1°
MACHINING	-	NEXT ASSY	USED ON	.XX ±.06 [1,5]
TOOLING FIXTURE #				(X.XXX) DENOTES CRITICAL DIMS.
				ALL THREADS ARE CRITICAL
				DRAWN G.B. 12/05/20
				CHECKED J.M. 12/05/20
				APPROVED J.M. 12/05/20

**BRASSTECH** 2001 CARNEGIE AVE.  
INCORPORATED SANTA ANA, CA 92705  
(949) 417-5207

POT FILLER

DWG NO. 3310-5503 REV -

SCALE .300 REF. - SHEET 1 OF 3

COPYRIGHT 2005 BRASSTECH, INC. THESE DRAWINGS AND THE DESIGNS DEPICTED HEREIN ARE THE PROPRIETARY PROPERTY OF BRASSTECH. ANY USE OR REPRODUCTION IS SUBJECT TO THE EXPRESS APPROVAL OF BRASSTECH. UNAUTHORIZED USE IS STRICTLY PROHIBITED. ALL RIGHTS RESERVED.

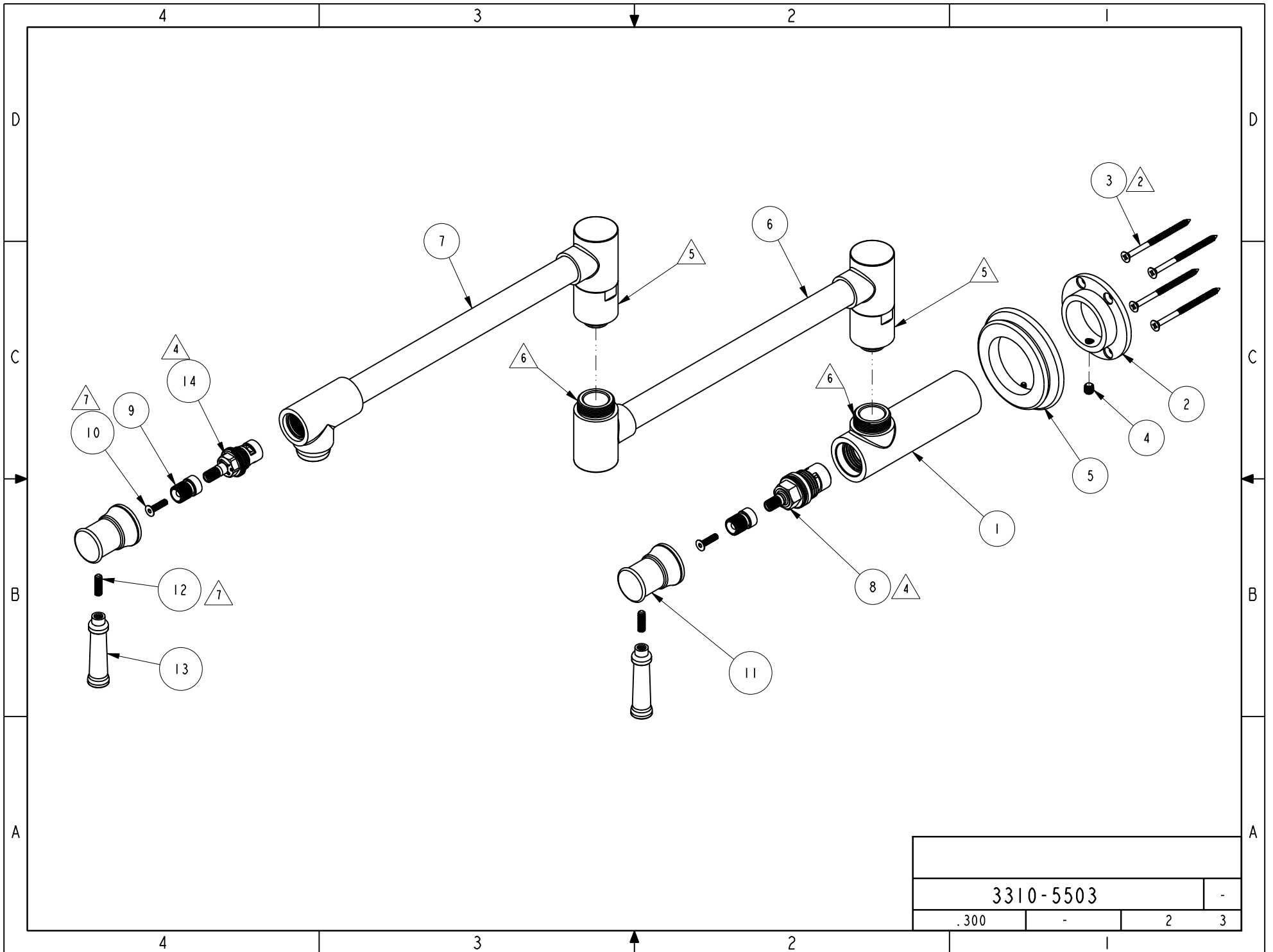
-	-	EN-4290	12/05/20	J.M.
ZONE	REV	DESCRIPTION	DATE	APPROVED

4

3

2

1



3310-5503				-
.300	-	2	3	

