

4

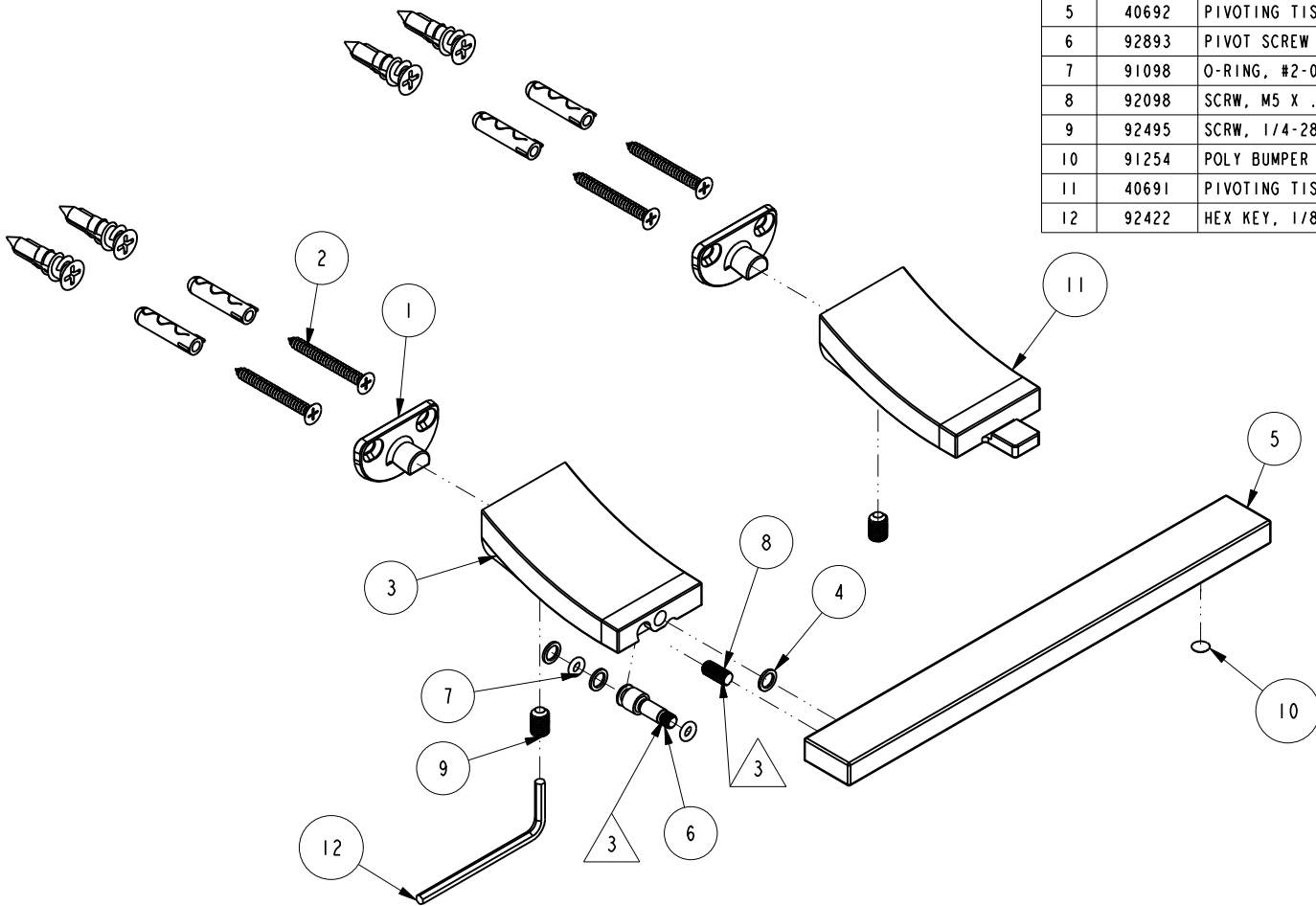
3

2

1

NOTES:

- (NI) 1. FIT / FORM / FUNCTION SHALL FOLLOW PS-E.008.
- 2. BAG ITEMS 1,2 AND 12.
- 3. APPLY LOCTITE 680 TO THREADS.



BILL OF MATERIAL (CURRENT LEVEL)

ITEM	PT/ASSY	DESCRIPTION	TYPE	QTY.
1	92437	MOUNTING BRACKET	PART	2
2	1-206	HARDWARE PACK	ASSEMBLY	2
3	40690	PIVOTING TISSUE POST LEFT	PART	1
4	91779	WSHR, .220 ID X .315 OD X .030 THK, FLT, ACETAL	PART	3
5	40692	PIVOTING TISSUE BAR	PART	1
6	92893	PIVOT SCREW	PART	1
7	91098	O-RING, #2-007, EPDM, 65-75 DURO	PART	2
8	92098	SCRW, M5 X .8 X 12M SKT HD CONE POINT SS	PART	1
9	92495	SCRW, 1/4-28 X 3/8 SKT HD CUP PT W/ SELF LOC SS	PART	2
10	91254	POLY BUMPER PAD, DIA .250" X .062"	PART	1
11	40691	PIVOTING TISSUE POST RIGHT	PART	1
12	92422	HEX KEY, 1/8" ALLOY STEEL	PART	1

D

D

C

C

B

B

A

A

ZONE	REV	DESCRIPTION	DATE	APPROVED
-	D	EN-4103	02/07/20	J.M.
-	C	EN-3735	06/19/19	J.M.
-	B	EN-1884	08/29/11	-
-	A	EN-1718	04/04/11	-
-	-	EN-1294	11/09/10	-

COPYRIGHT 2005 BRASSTECH, INC. THESE DRAWINGS AND THE DESIGNS DEPICTED HEREIN ARE THE PROPRIETARY PROPERTY OF BRASSTECH. ANY USE OR REPRODUCTION IS SUBJECT TO THE EXPRESS APPROVAL OF BRASSTECH. UNAUTHORIZED USE IS STRICTLY PROHIBITED. ALL RIGHTS RESERVED.

TESTING	ASSEMBLY	PLATING	POLISHING	MACHINING	TOOLING FIXTURE #	APPLICATION
-	-	-	-	-	-	REMOVE ALL BURRS AND SHARP EDGES

UNITS ARE: INCHES [MM]	TOLERANCES ARE:
FRACTIONS DECIMALS	ANGLES
±1/16"	.X ±.1 [2.5] ±1°
	.XX ±.06 [1.5]
(X.XXX) DENOTES CRITICAL DIMS. ALL THREADS ARE CRITICAL	
DRAWN	MANJUNATH 06/19/19
CHECKED	JINSON 06/19/19
APPROVED	J.M. 06/19/19

BRASSTECH 2001 CARNEGIE AVE. SANTA ANA, CA 92705 (949) 417-5207
INCORPORATED

PIVOTING TISSUE HOLDER

DWG NO. 37-28 REV D

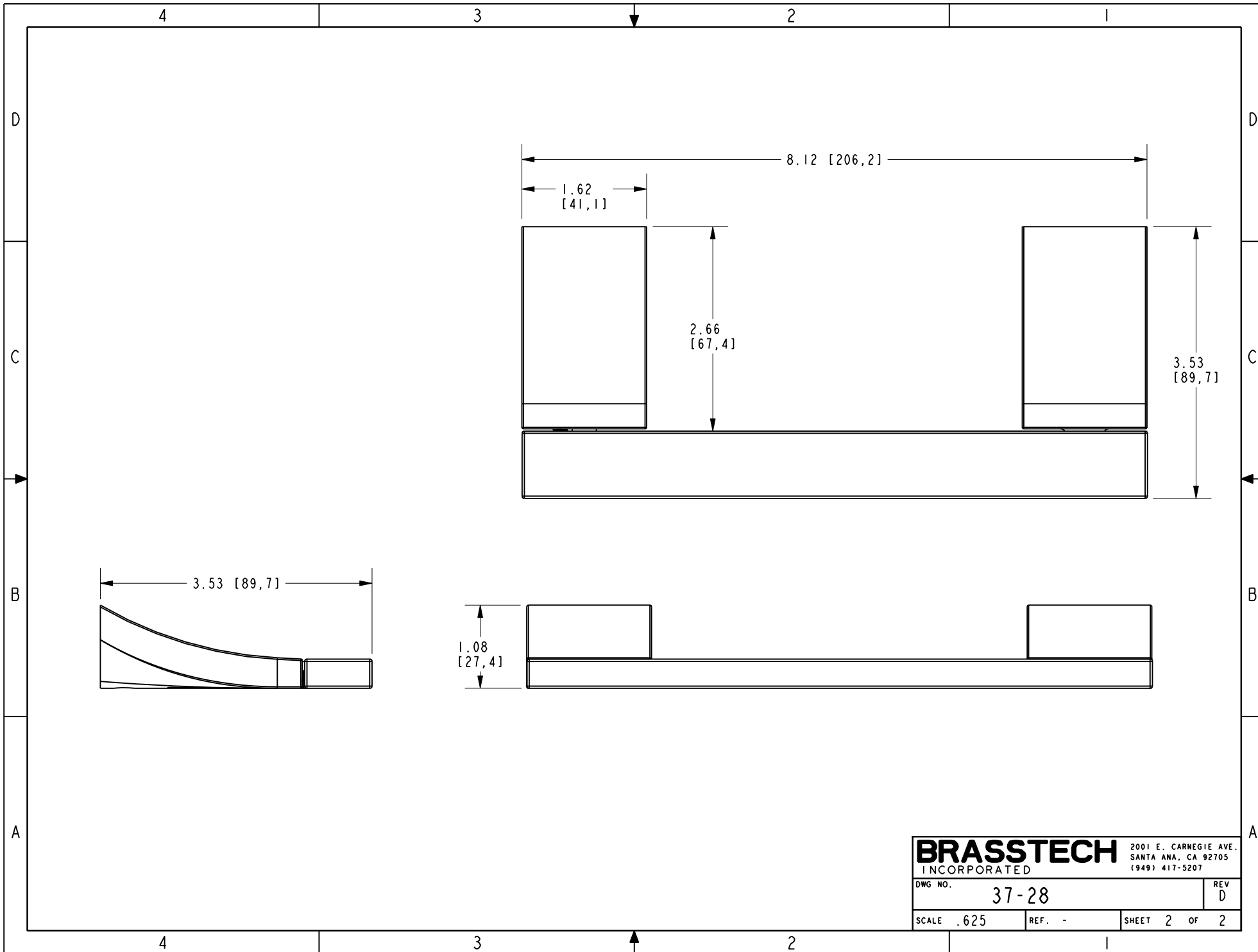
SCALE .400 REF. - SHEET 1 OF 2

4

3

2

1



BRASSTECH		2001 E. CARNEGIE AVE.	
INCORPORATED		SANTA ANA, CA 92705	
DWG NO. 37-28		REV D	
SCALE .625	REF. -	SHEET 2 OF 2	