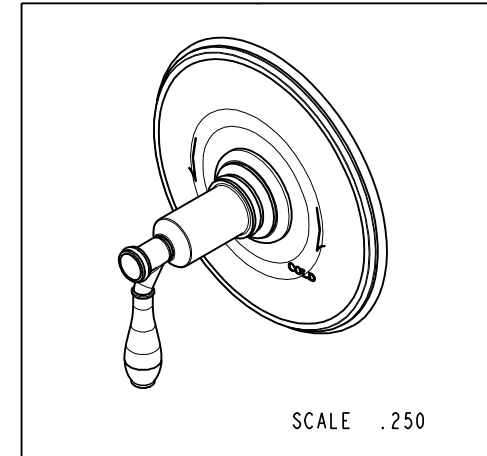
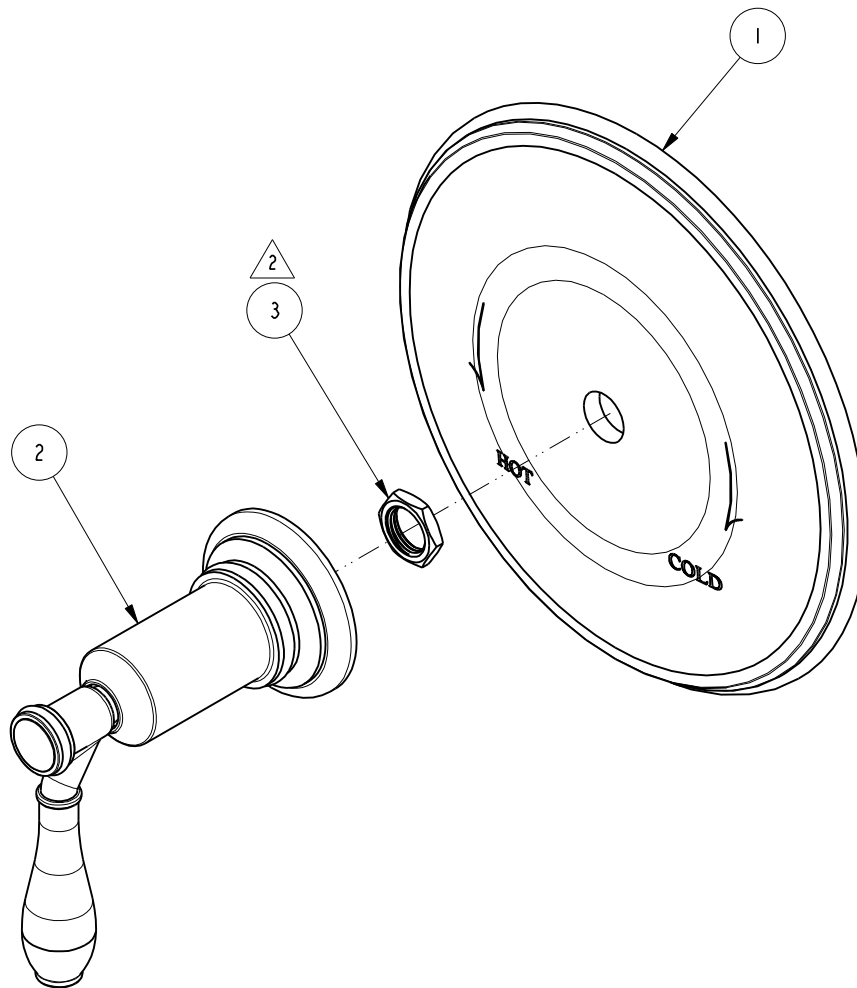


NOTES:

1. TO INSPECT ASSEMBLY, FOLLOW FIRST ARTICLE AND IN PROCESS INSPECTION SHEET.
2. SEAL NUT 10259 IN A PLASTIC BAG AND TAPE TO THE BACK OF THE TRIM PLATE.

BILL OF MATERIAL (CURRENT LEVEL)

| ITEM | PT/ASSY | DESCRIPTION | TYPE | QTY. |
|------|---------|------------------------|----------|------|
| 1 | 8-096 | SHOWER PLATE ASM | ASSEMBLY | 1 |
| 2 | 3-593 | FLOW CONTROL HANDLE | ASSEMBLY | 1 |
| 3 | 10259 | HEX NUT 9/16 X 20 MADE | PART | 1 |



| ZONE | REV | DESCRIPTION | DATE | APPROVED |
|------|-----|-------------|----------|----------|
| - | C | EN-4441 | 04/18/22 | N.S. |
| - | B | EN-4300e | 04/28/21 | R.S. |
| - | A | EN-3271A | 12/18/17 | J.A. |
| - | - | EN-1735 | 06/10/11 | - |

COPYRIGHT 2005 BRASSTECH, INC. THESE DRAWINGS AND THE DESIGNS DEPICTED HEREIN ARE THE PROPRIETARY PROPERTY OF BRASSTECH. ANY USE OR REPRODUCTION IS SUBJECT TO THE EXPRESS APPROVAL OF BRASSTECH. UNAUTHORIZED USE IS STRICTLY PROHIBITED. ALL RIGHTS RESERVED.

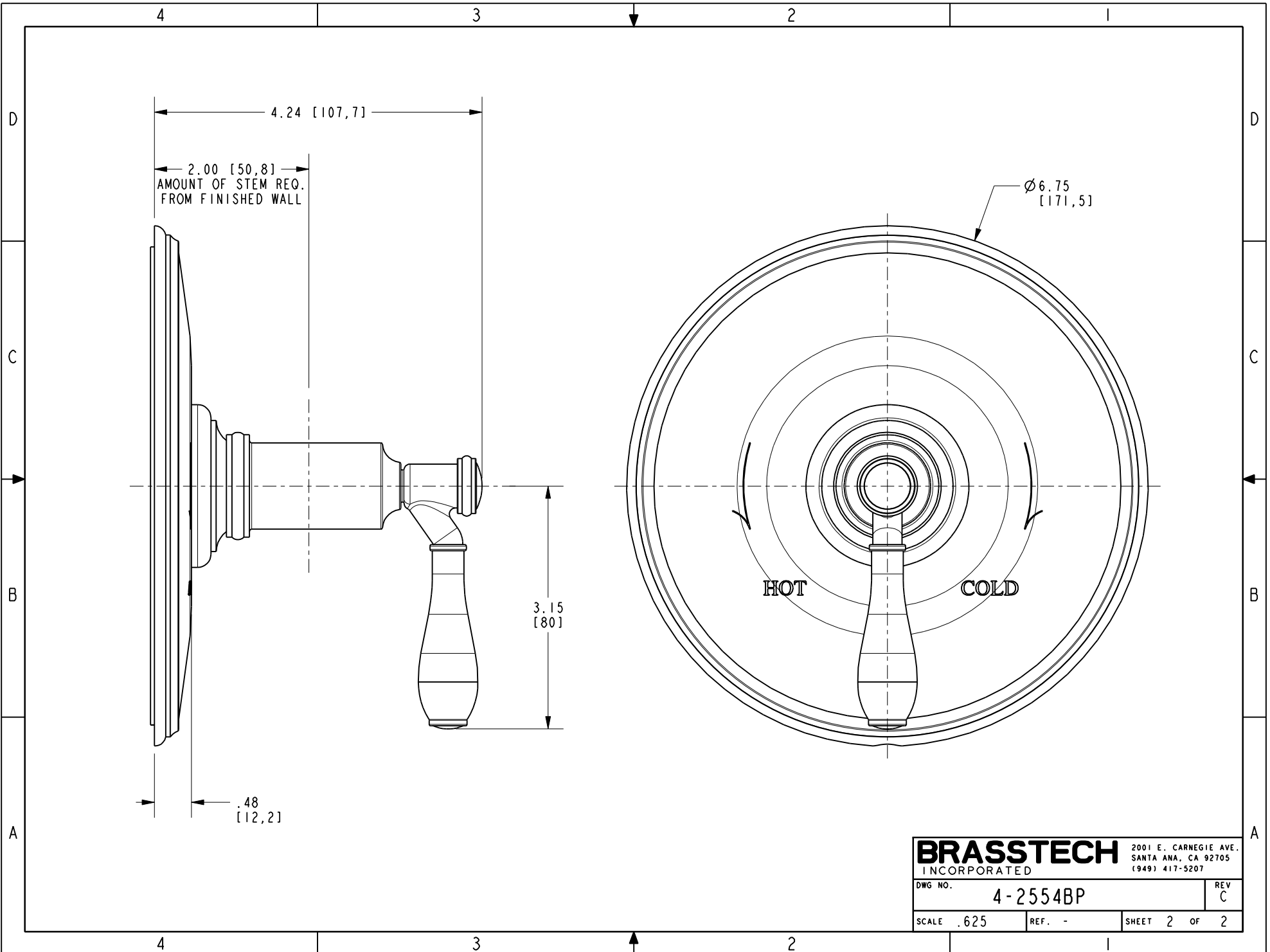
| TESTING | - | - | - |
|-------------------|----------------------------------|-------------|---------|
| ASSEMBLY | - | - | - |
| PLATING | - | - | - |
| POLISHING | - | NEXT ASSY | USED ON |
| MACHINING | - | APPLICATION | |
| TOOLING FIXTURE # | REMOVE ALL BURRS AND SHARP EDGES | | |

| UNITS ARE: INCHES [MM] | | |
|---|----------------|----------|
| TOLERANCES ARE: | | |
| FRACTIONS | DECIMALS | ANGLES |
| ±1/16" | .X ±.1 [2,5] | ±1° |
| | .XX ±.06 [1,5] | |
| (X.XXX) DENOTES CRITICAL DIMS. ALL THREADS ARE CRITICAL | | |
| DRAWN | J.T. | 04/18/22 |
| CHECKED | N.S. | 04/18/22 |
| APPROVED | N.S. | 04/18/22 |

BRASSTECH 2001 CARNEGIE AVE.
INCORPORATED SANTA ANA, CA 92705
(949) 417-5207

BALANCED PRESSURE SHOWER TRIM PLATE WITH HANDLE

| | | | |
|---------|----------|------|---|
| DWG NO. | 4-2554BP | REV | C |
| SCALE | .500 | REF. | - |
| SHEET | 1 | OF | 2 |



| | | | |
|------------------|----------|-----------------------|----------|
| BRASSTECH | | 2001 E. CARNEGIE AVE. | |
| INCORPORATED | | SANTA ANA, CA 92705 | |
| | | (949) 417-5207 | |
| DWG NO. | 4-2554BP | | REV C |
| SCALE .625 | REF. - | SHEET 2 OF 2 | |