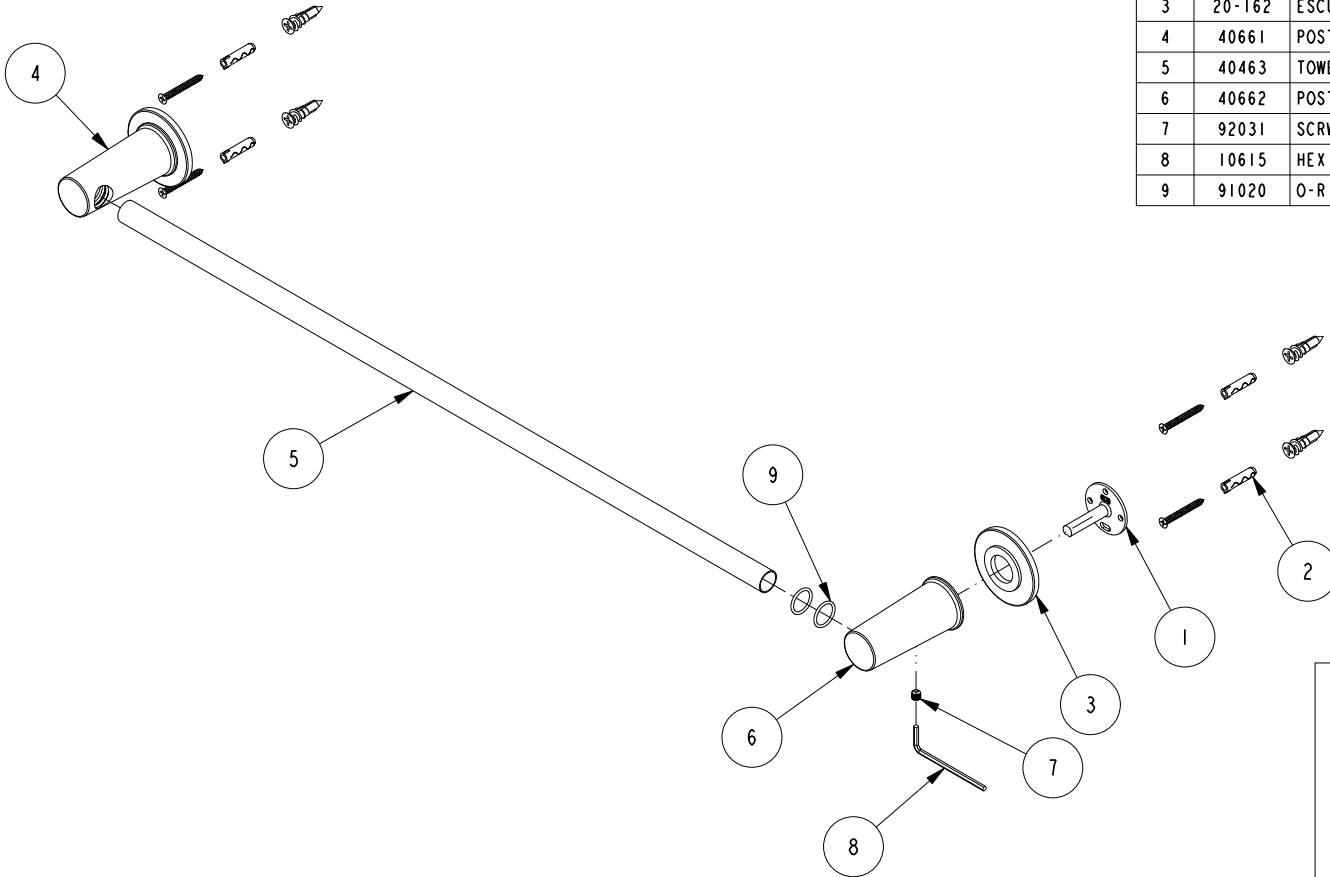


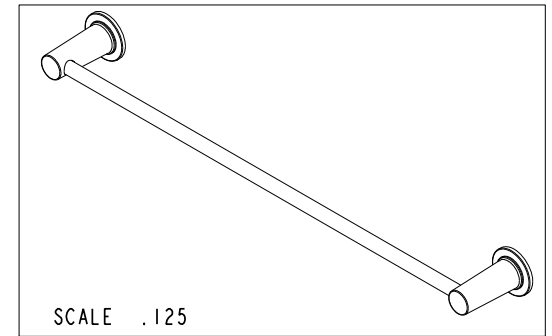
NOTES:

(N1) 1. FIT / FORM / FUNCTION SHALL FOLLOW PS-E.008.



BILL OF MATERIAL (CURRENT LEVEL)

| ITEM | PT/ASSY | DESCRIPTION | TYPE | QTY. |
|------|---------|--|----------|------|
| 1 | 6XXB | MOUNTING BRACKET | PART | 2 |
| 2 | 1-206 | HARDWARE PACK | ASSEMBLY | 2 |
| 3 | 20-162 | ESCUTCHEON ASM | ASSEMBLY | 2 |
| 4 | 40661 | POST, TOWEL BAR LEFT | PART | 1 |
| 5 | 40463 | TOWEL BAR TUBE | PART | 1 |
| 6 | 40662 | POST, TOWEL BAR RIGHT | PART | 1 |
| 7 | 92031 | SCRW, M6 X 1 X 6 SKT HD CUP PT SS | PART | 2 |
| 8 | 10615 | HEX KEY, 3MM ALLOY STEEL | PART | 1 |
| 9 | 91020 | O-RING, #2-016, EPDM, 65-75 DURO, NSF 61 | PART | 4 |



COPYRIGHT 2005 BRASSTECH, INC.
 THESE DRAWINGS AND THE DESIGNS
 DEPICTED HEREIN ARE THE PROPRIETARY
 PROPERTY OF BRASSTECH. ANY USE
 OR REPRODUCTION IS SUBJECT TO
 THE EXPRESS APPROVAL OF BRASSTECH.
 UNAUTHORIZED USE IS STRICTLY
 PROHIBITED. ALL RIGHTS RESERVED.

| | | | |
|-----------|-----------|----------------------------------|---------|
| TESTING | - | - | - |
| ASSEMBLY | - | - | - |
| PLATING | - | - | - |
| POLISHING | - | NEXT ASSY | USED ON |
| MACHINING | - | APPLICATION | |
| TOOLING | FIXTURE # | REMOVE ALL BURRS AND SHARP EDGES | |

UNITS ARE: INCHES [MM]
 TOLERANCES ARE:
 FRACTIONS DECIMALS ANGLES
 $\pm 1/16"$.X $\pm .1$ [2.5] $\pm 1^\circ$
 .XX $\pm .06$ [1.5]

(X.XXX) DENOTES CRITICAL DIMS.
 ALL THREADS ARE CRITICAL

DRAWN RAVINDRA 10/12/16
 CHECKED JINSON 10/12/16
 APPROVED J.M 10/12/16

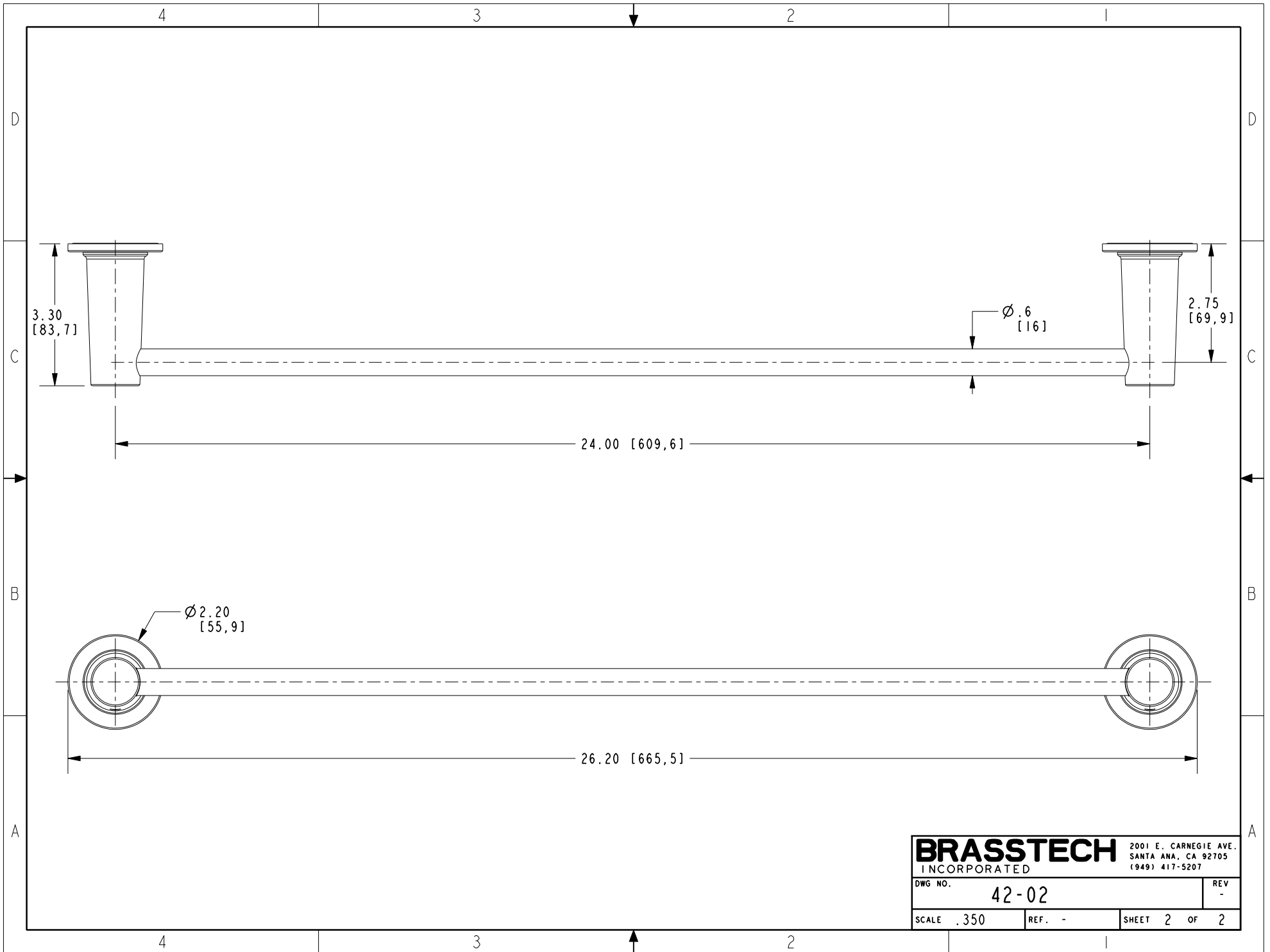
BRASSTECH 2001 CARNEGIE AVE.
 INCORPORATED SANTA ANA, CA 92705
 (949) 417-5207

24" TOWEL BAR

DWG NO. 42-02 REV -

SCALE .200 REF. - SHEET 1 OF 2

| - | - | EN-3133 | 10/12/16 | J.M |
|------|-----|-------------|----------|----------|
| ZONE | REV | DESCRIPTION | DATE | APPROVED |



| | | |
|------------------|--------|-----------------------|
| BRASSTECH | | 2001 E. CARNEGIE AVE. |
| INCORPORATED | | SANTA ANA, CA 92705 |
| | | (949) 417-5207 |
| DWG NO. | 42-02 | REV - |
| SCALE .350 | REF. - | SHEET 2 OF 2 |