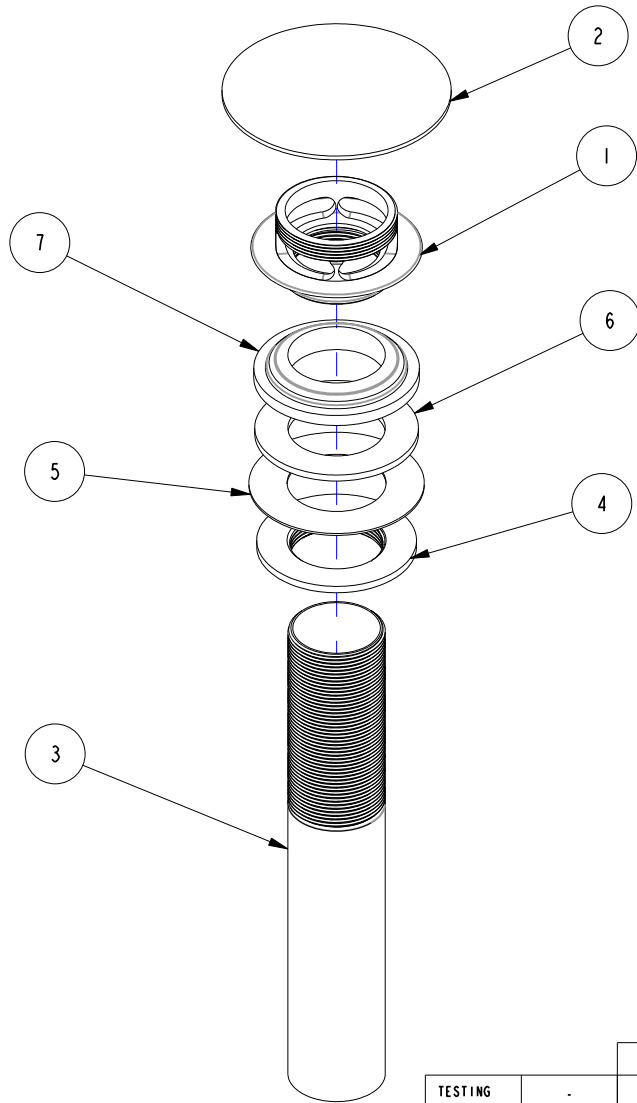


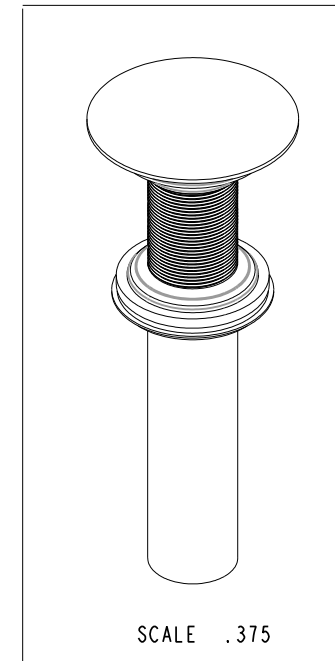
NOTES:

(N1) 1. TO INSPECT ASSEMBLY, FOLLOW FIRST ARTICLE AND IN PROCESS INSPECTION SHEET.



BILL OF MATERIAL (CURRENT LEVEL)

ITEM	PT/ASSY	DESCRIPTION	TYPE	QTY.
1	50813	ADAPTER, DOME	PART	1
2	50814	CAP, DOME	PART	1
3	50460	TAILPIECE FOR DRAIN ASSY	PART	1
4	10209	MNT'G NUT - DRAIN FL	PART	1
5	50029	WSHR, 1.34 ID X 2.25 OD X .05 THK.	PART	1
6	91196	WASHER - 1-1/4 ID X .094 THK	PART	1
7	91197	WASHER - 1-1/4 MOLDED	PART	1



ZONE	REV	DESCRIPTION	DATE	APPROVED
-	A	EN-430011	10/22/21	N.S.
-	-	EO-0662	03/08/06	J.M.

COPYRIGHT 2005 BRASSTECH, INC. THESE DRAWINGS AND THE DESIGNS DEPICTED HEREIN ARE THE PROPRIETARY PROPERTY OF BRASSTECH. ANY USE OR REPRODUCTION IS SUBJECT TO THE EXPRESS APPROVAL OF BRASSTECH. UNAUTHORIZED USE IS STRICTLY PROHIBITED. ALL RIGHTS RESERVED.

TESTING	-	-	-
ASSEMBLY	-	-	-
PLATING	-	-	-
POLISHING	-	NEXT ASSY	USED ON
MACHINING	-	APPLICATION	
TOOLING FIXTURE #	REMOVE ALL BURRS AND SHARP EDGES		

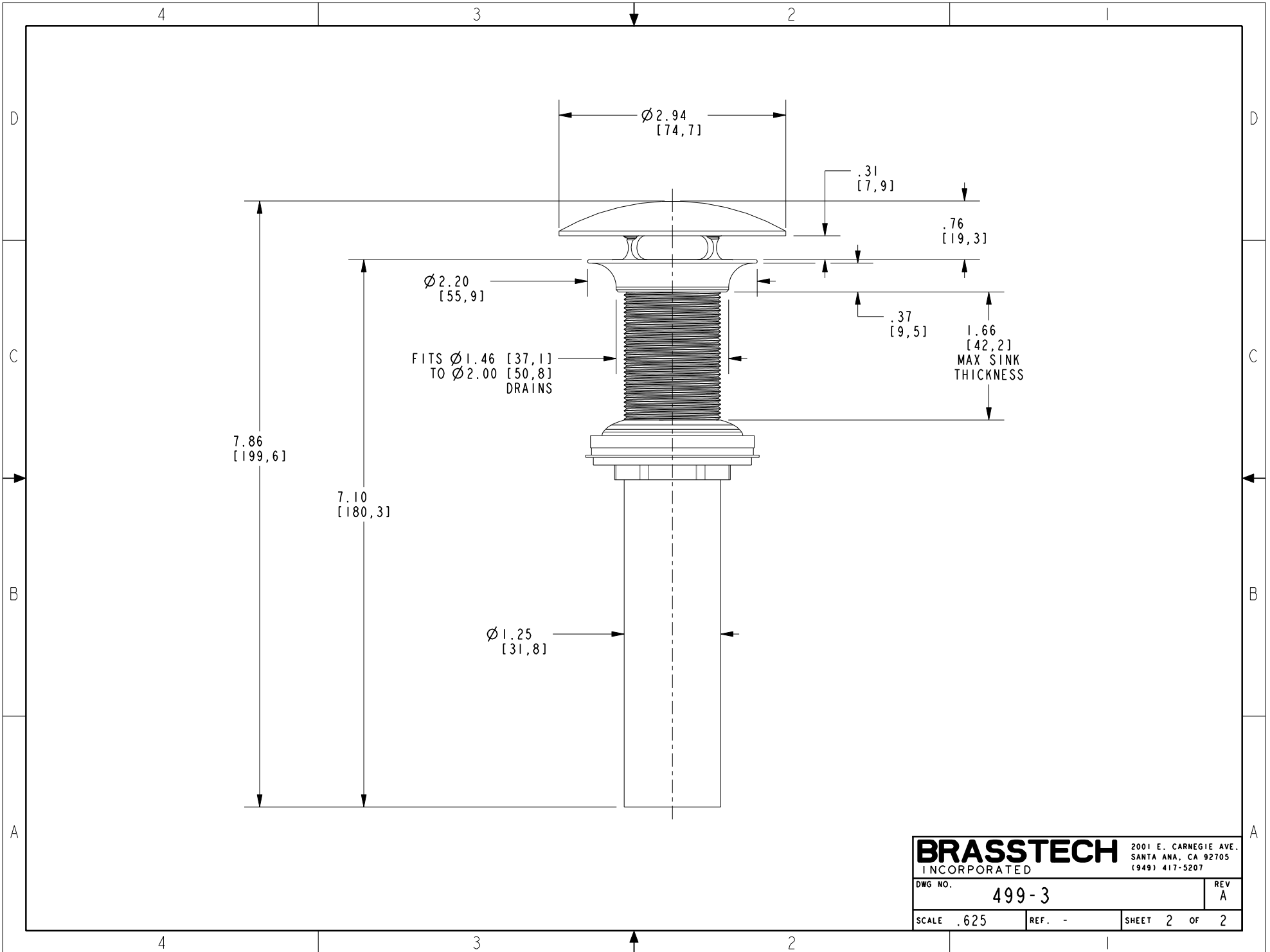
UNITS ARE: INCHES [MM]
 TOLERANCES ARE:
 FRACTIONS DECIMALS ANGLES
 $\pm 1/16"$ $.X \pm .1 [2.5]$ $\pm 1^\circ$
 $.XX \pm .06 [1.5]$
 (X.XXX) DENOTES CRITICAL DIMS.
 ALL THREADS ARE CRITICAL
 DRAWN NMS 10/22/21
 CHECKED W. SANTOS 10/22/21
 APPROVED W. SANTOS 10/22/21

BRASSTECH 2001 CARNEGIE AVE.
 INCORPORATED SANTA ANA, CA 92705
 (949) 417-5207

CAP DOME DRAIN W/O
 OVERFLOW, FINISHED

DWG NO. 499-3 REV A

SCALE .406 REF. - SHEET 1 OF 2



BRASSTECH		2001 E. CARNEGIE AVE.	
INCORPORATED		SANTA ANA, CA 92705	
		(949) 417-5207	
DWG NO.	499-3		REV A
SCALE .625	REF. -	SHEET 2 OF 2	