

4

3

2

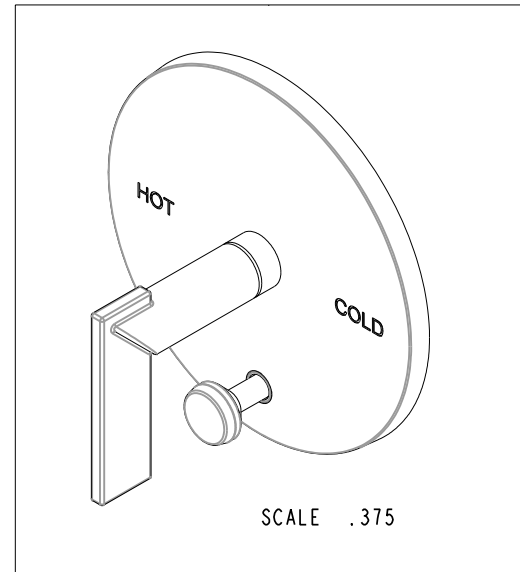
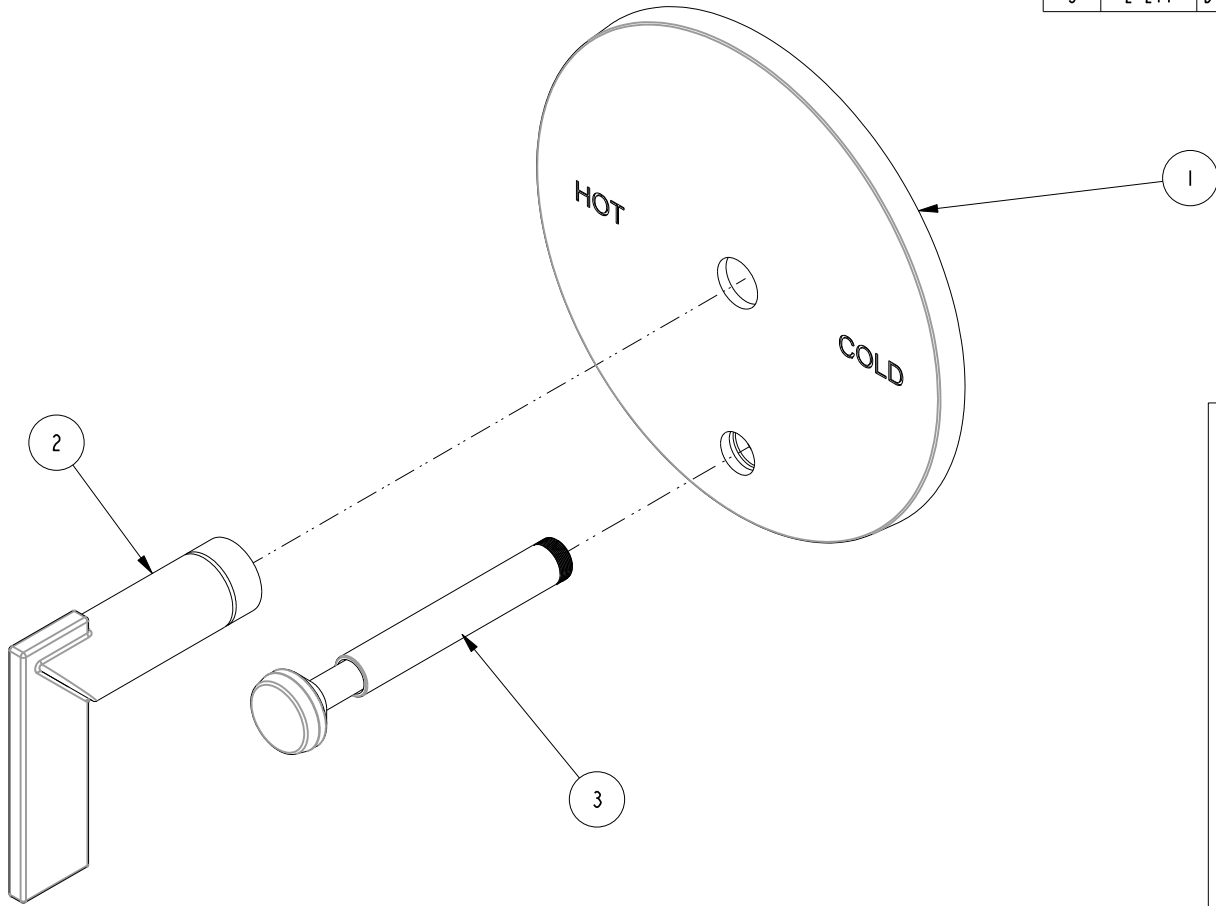
1

NOTES:

(N1) 1. TO INSPECT ASSEMBLY, FOLLOW FIRST ARTICLE AND IN PROCESS INSPECTION SHEET.

BILL OF MATERIAL (CURRENT LEVEL)

| ITEM | PT/ASSY | DESCRIPTION | TYPE | QTY. |
|------|---------|--------------------------|----------|------|
| 1 | 20-501 | TUB AND SHOWER PLATE ASM | ASSEMBLY | 1 |
| 2 | 20-300 | LEVER ASM | ASSEMBLY | 1 |
| 3 | 2-217 | DIVERTER TRIM KIT | ASSEMBLY | 1 |



| ZONE | REV | DESCRIPTION | DATE | APPROVED |
|------|-----|-------------|----------|----------|
| - | D | EN-4154c | 04/14/22 | N.S. |
| - | C | EN-4300e | 04/28/21 | R.S. |
| - | B | EN-3334 | 01/09/18 | J.A. |
| - | A | EN-2997 | 08/25/16 | J.A. |
| - | - | EN-2735 | 04/30/14 | J.M. |

COPYRIGHT 2005 BRASSTECH, INC. THESE DRAWINGS AND THE DESIGNS DEPICTED HEREIN ARE THE PROPRIETARY PROPERTY OF BRASSTECH. ANY USE OR REPRODUCTION IS SUBJECT TO THE EXPRESS APPROVAL OF BRASSTECH. UNAUTHORIZED USE IS STRICTLY PROHIBITED. ALL RIGHTS RESERVED.

| TESTING | - | - | - |
|-------------------|----------------------------------|-------------|---------|
| ASSEMBLY | - | - | - |
| PLATING | - | - | - |
| POLISHING | - | NEXT ASSY | USED ON |
| MACHINING | - | APPLICATION | |
| TOOLING FIXTURE # | REMOVE ALL BURRS AND SHARP EDGES | | |

| UNITS ARE: INCHES [MM] | | |
|---|----------------|----------|
| TOLERANCES ARE: | | |
| FRACTIONS | DECIMALS | ANGLES |
| ±1/16" | .X ±.1 [2.5] | ±1° |
| | .XX ±.06 [1.5] | |
| (X.XXX) DENOTES CRITICAL DIMS. ALL THREADS ARE CRITICAL | | |
| DRAWN | JINSON | 04/28/21 |
| CHECKED | R.S. | 04/28/21 |
| APPROVED | R.S. | 04/28/21 |

BRASSTECH 2001 CARNEGIE AVE. SANTA ANA, CA 92705 (949) 417-5207
INCORPORATED

BP TRIM PLATE WITH DIVERTER, LEVER HANDLE

DWG NO. **5-2492BP** REV D

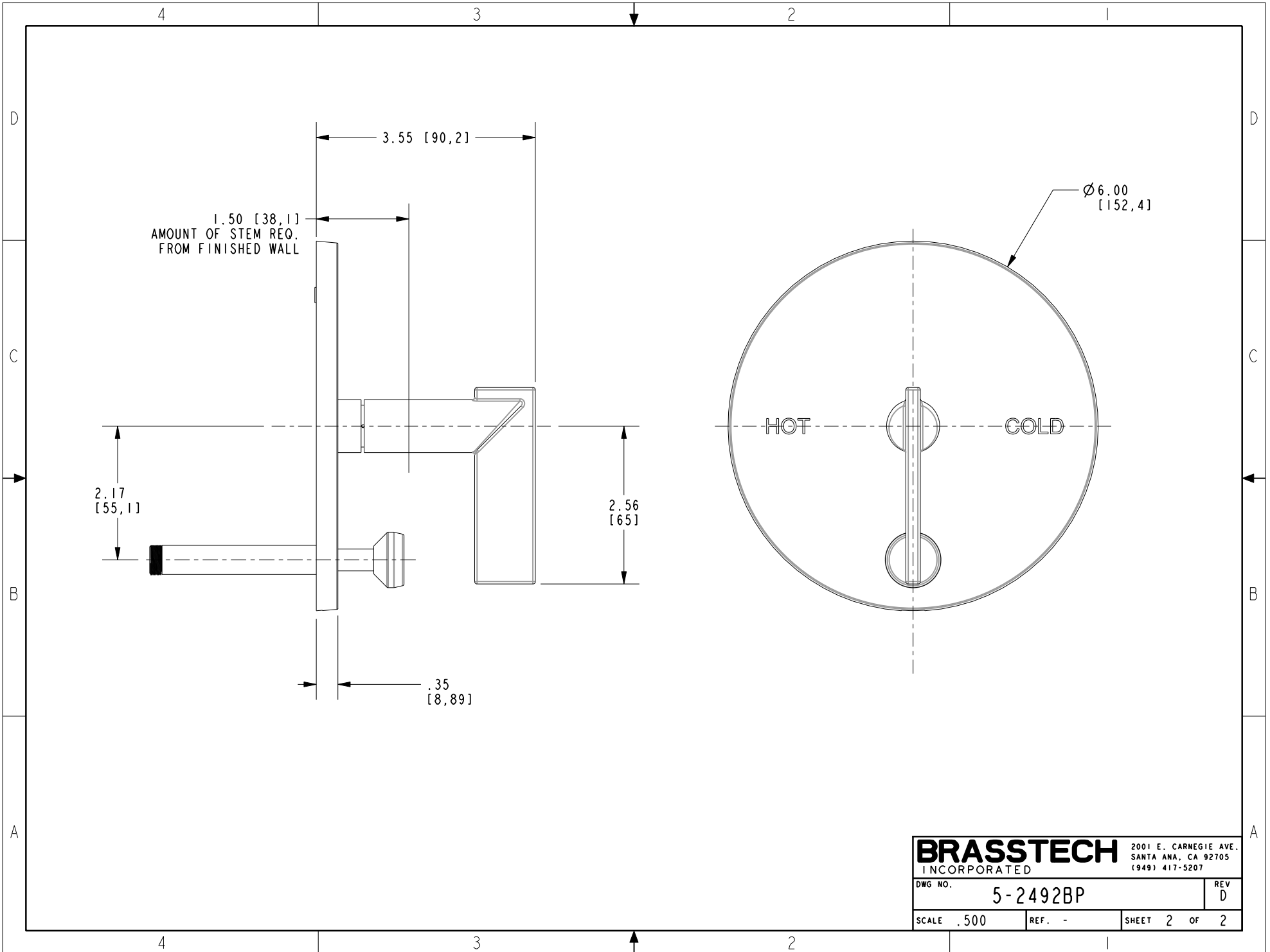
SCALE .500 REF. - SHEET 1 OF 2

4

3

2

1



1.50 [38,1]
 AMOUNT OF STEM REQ.
 FROM FINISHED WALL

Ø 6.00
 [152,4]

HOT

GOLD

2.17
 [55,1]

2.56
 [65]

.35
 [8,89]

| | | | |
|------------------|----------|-----------------------|--|
| BRASSTECH | | 2001 E. CARNEGIE AVE. | |
| INCORPORATED | | SANTA ANA, CA 92705 | |
| | | (949) 417-5207 | |
| DWG NO. | 5-2492BP | REV D | |
| SCALE .500 | REF. - | SHEET 2 OF 2 | |