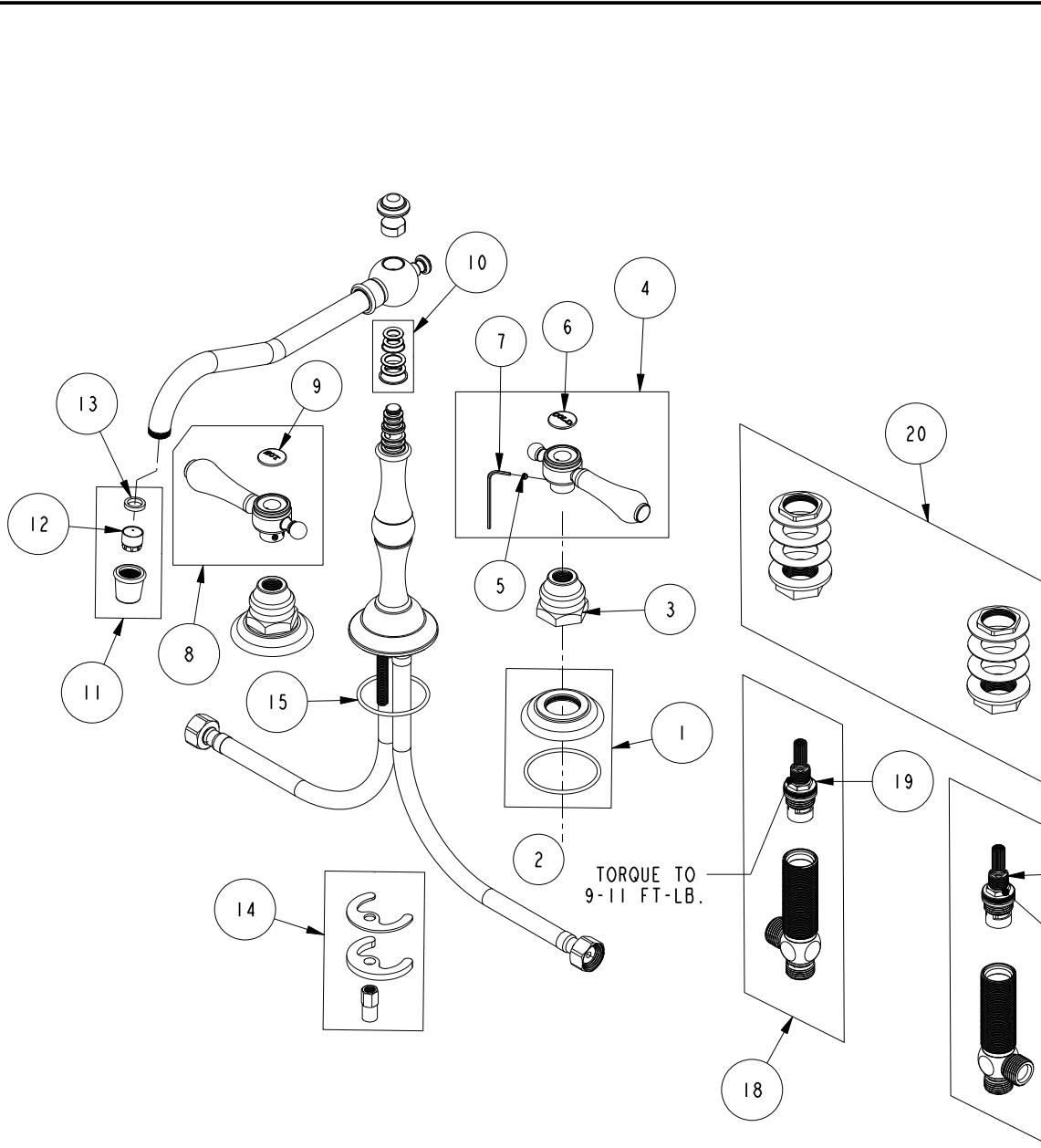


REPLACEMENT PARTS



ITEM	PT/ASSY	SPECIFY FINISH	DESCRIPTION
1	20-681	YES	ESCUTCHEON ASSEMBLY
2	91753		O-RING, # 2-136, EP, 50 DURO - GREY
3	10523	YES	HEX ESCUTCHEON BONNET
4	2-133	YES	HANDLE ASSEMBLY - COLD
5	92000		SCREW 8 - 32 X 1/8 SS
6	1-107		COLD BUTTON ASSEMBLY W/ ADHESIVE
7	10192		HEX KEY TOOL, #8 5/64
8	2-134	YES	HANDLE ASSEMBLY - HOT
9	1-108		HOT BUTTON ASSEMBLY W/ ADHESIVE
10	10-302		SPOUT O-RING AND WASHER KIT
11	2-259	YES	AERATOR ASM
12	11917		AERATOR INSERT TT, 1.75 GPM
13	91265		WSHR, 11 ID X 15 OD X 2.8 MM THK, FLT, RUBBER NSF 61 APPR
14	1-491		SPOUT MOUNTING KIT
15	91756		O-RING #2-134, EP, 50 DURO - GREY
16	1-527		W/S CART/BODY ASM (HOT)
17	1-002		W/S CARTRIDGE - HOT
18	1-526		W/S CART/BODY ASM (COLD)
19	1-001		W/S CARTRIDGE - COLD
20	1-027		WIDE SPREAD MOUNTING HARDWARE

**KITCHEN FAUCET
972**

REV D EN-4748 12/06/23 APPROVED RS

NEWPORT BRASS.

t: 949.417.5207 | www.newportbrass.com