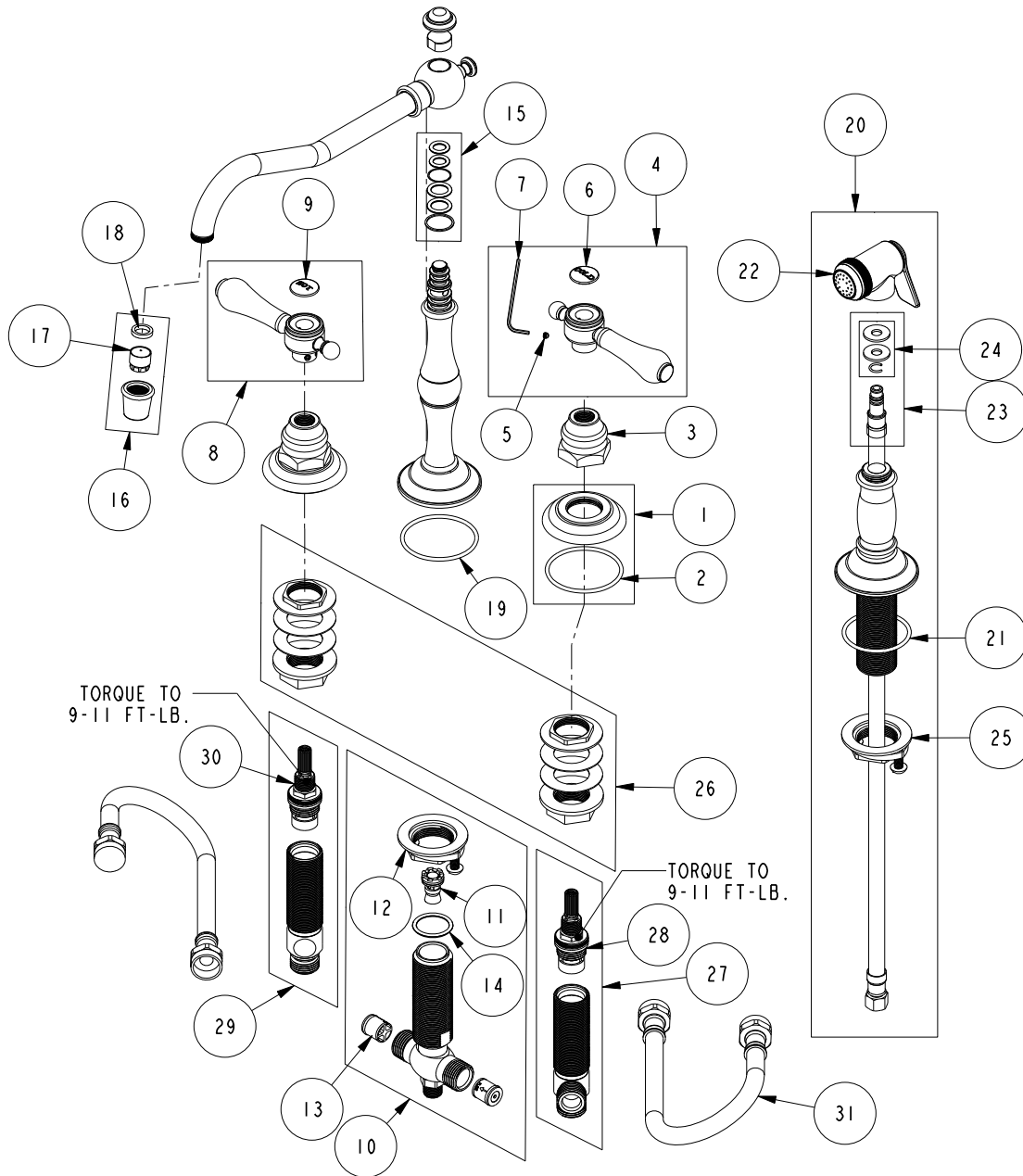


REPLACEMENT PARTS



ITEM	PT/ASSY	SPECIFY FINISH	DESCRIPTION
1	20-681	YES	ESCUTCHEON ASSEMBLY
2	91753		O-RING, # 2-136, EP, 50 DURO - GREY
3	10523	YES	HEX ESCUTCHEON BONNET
4	2-133	YES	HANDLE ASSEMBLY - COLD
5	92000		SCREW 8 - 32 X 1/8 SS
6	1-107		COLD BUTTON ASSEMBLY W/ ADHESIVE
7	10192		HEX KEY TOOL, #8 5/64
8	2-134	YES	HANDLE ASSEMBLY - HOT
9	1-108		HOT BUTTON ASSEMBLY W/ ADHESIVE
10	1-536		DIVERTER ASM TEE
11	11208		DIVERTER
12	1-393		1-1/8 18 UNEF MOUNTING KIT
13	11046		CHECK VALVE CARTRIDGE
14	91288		O-RING, #2-119, EPDM, 65-75 DURO
15	10-302		SPOUT O-RING AND WASHER KIT
16	2-259	YES	AERATOR ASM
17	11917		AERATOR INSERT TT, 1.75 GPM
18	91265		WSHR, 11 ID X 15 OD X 2.8 MM THK, FLT, RUBBER NSF 61 APPR
19	91753		O-RING, # 2-136, EP, 50 DURO - GREY
20	129	YES	KITCHEN SPRAY HEAD
21	91762		O-RING, #2-132, EP, 50 DURO - GREY
22	2-119B	YES	SPRAY HEAD ASM
23	1-778		SIDE SPRAY HOSE ASSY
24	1-397		SIDE SPRAY WASHERS
25	1-393		1-1/8 18 UNEF MOUNTING KIT
26	1-027		WIDE SPREAD MOUNTING HARDWARE
27	1-526		W/S CART/BODY ASM (COLD)
28	1-001		W/S CARTRIDGE - COLD
29	1-527		W/S CART/BODY ASM (HOT)
30	1-002		W/S CARTRIDGE - HOT
31	10376_FIG1		FLEX HOSE 12 IN.

**KITCHEN FAUCET WITH SPRAY
973**

REV D EN-4673 06/20/23 APPROVED RS

NEWPORT BRASS.

t: 949.417.5207 | www.newportbrass.com