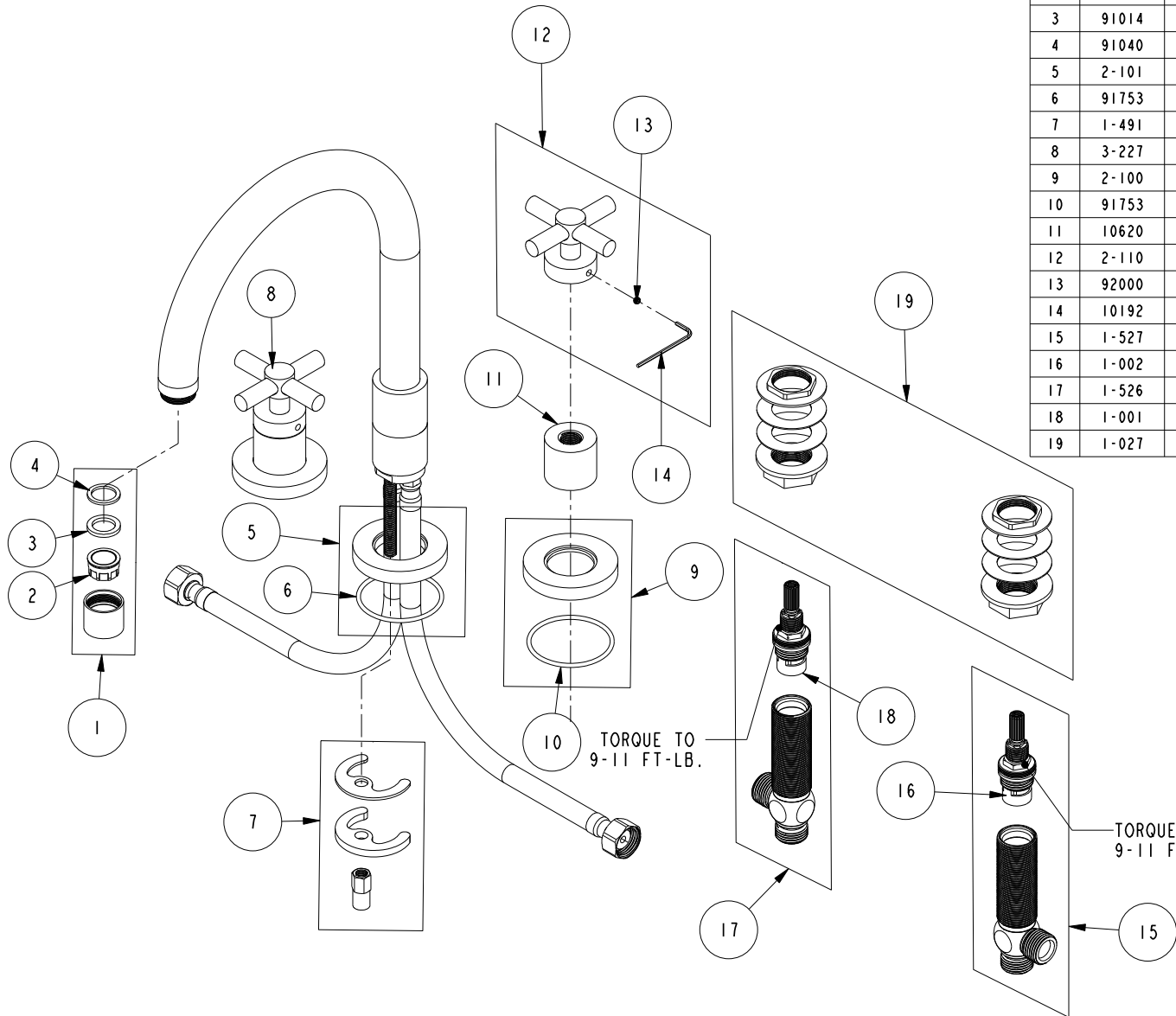


REPLACEMENT PARTS



ITEM	PT/ASSY	SPECIFY FINISH	DESCRIPTION
1	2-112	YES	AERATOR ASM
2	11915		AERATOR INSERT STD, 1.8 GPM
3	91014		WSHR, .59 ID X .84 OD X .095 THK, FLT, RUBBER NSF 61
4	91040		WSHR, .590 ID X .825 OD X .072 THK, FLT, RUBBER NSF 61
5	2-101	YES	SPOUT BASE RING ASM
6	91753		O-RING, # 2-136, EP, 50 DURO - GREY
7	1-491		SPOUT MOUNTING KIT
8	3-227	YES	HANDLE TRIM - STOP VALVE
9	2-100	YES	ESCUTCHEON - ASSEMBLY
10	91753		O-RING, # 2-136, EP, 50 DURO - GREY
11	10620	YES	BONNET
12	2-110	YES	CROSS HANDLE ASM
13	92000		SCREW 8 - 32 X 1/8 SS
14	10192		HEX KEY TOOL, #8 5/64
15	1-527		W/S CART/BODY ASM (HOT)
16	1-002		W/S CARTRIDGE - HOT
17	1-526		W/S CART/BODY ASM (COLD)
18	1-001		W/S CARTRIDGE - COLD
19	1-027		WIDE SPREAD MOUNTING HARDWARE

**KITCHEN FAUCET
9901**

REV E EN-4748 12/06/23 APPROVED RS

NEWPORT BRASS.

t: 949.417.5207 | www.newportbrass.com