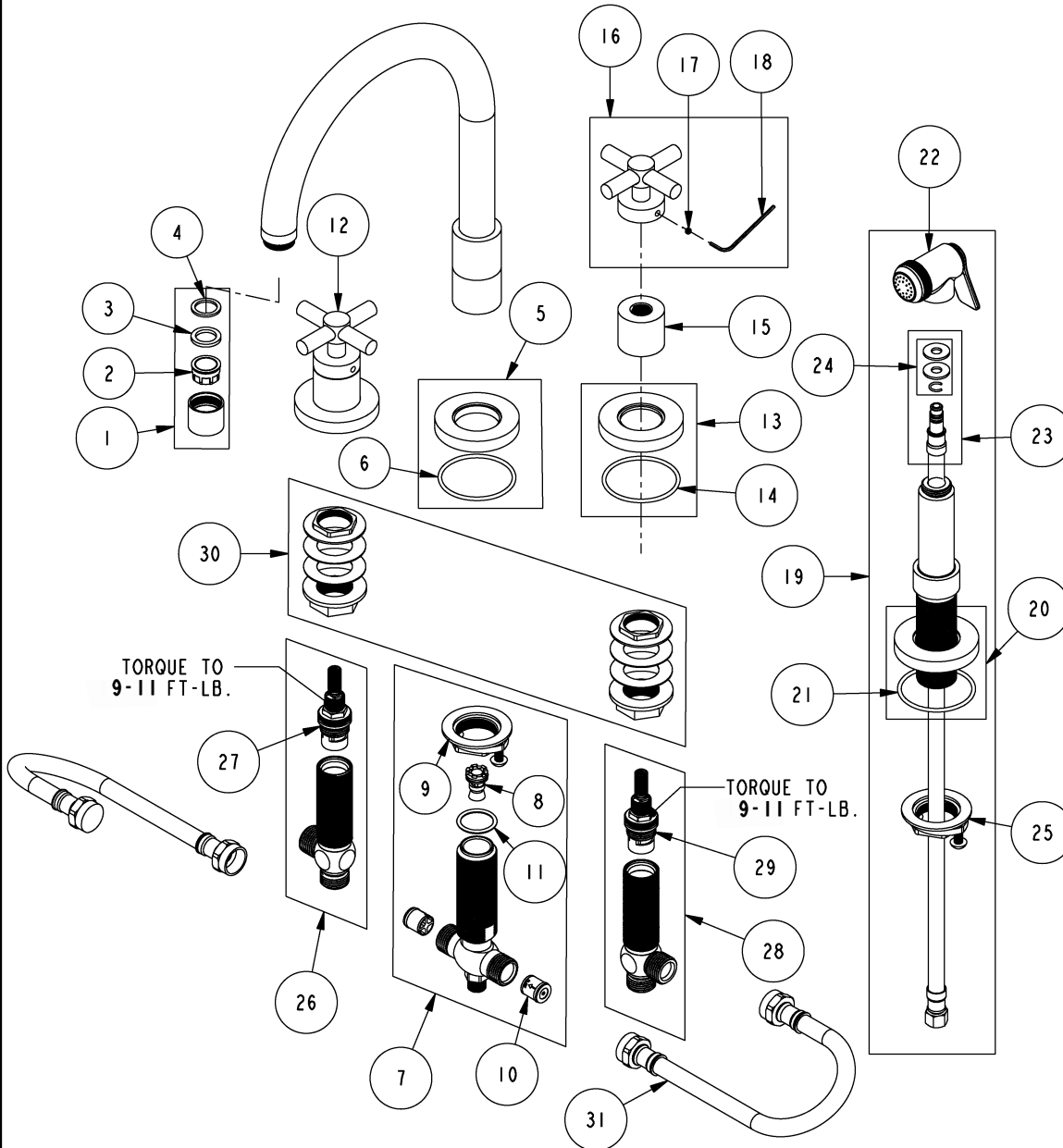


# REPLACEMENT PARTS



ITEM	PT/ASSY	SPECIFY FINISH	DESCRIPTION
1	2-112	YES	AERATOR ASM
2	11915		AERATOR INSERT STD, 1.8 GPM
3	91014		WSHR, .59 ID X .84 OD X .095 THK, FLT, RUBBER NSF 61
4	91040		WSHR, .590 ID X .825 OD X .072 THK, FLT, RUBBER NSF 61
5	2-101	YES	SPOUT BASE RING ASM
6	91753		O-RING, # 2-136, EP, 50 DURO - GREY
7	1-536		DIVERTER ASM TEE
8	11208		DIVERTER
9	1-393		1-1/8 18 UNEF MOUNTING KIT
10	11046		CHECK VALVE CARTRIDGE
11	91288		O-RING, #2-119, EPDM, 65-75 DURO
12	3-227	YES	HANDLE TRIM - STOP VALVE
13	2-100	YES	ESCUTCHEON - ASSEMBLY
14	91753		O-RING, # 2-136, EP, 50 DURO - GREY
15	10620	YES	BONNET
16	2-110	YES	CROSS HANDLE ASM
17	92000		SCREW 8 - 32 X 1/8 SS
18	10192		HEX KEY TOOL, #8 5/64
19	1291	YES	KITCHEN SPRAY HEAD
20	2-100	YES	ESCUTCHEON - ASSEMBLY
21	91753		O-RING, # 2-136, EP, 50 DURO - GREY
22	2-119B	YES	SPRAY HEAD ASM
23	1-778		SIDE SPRAY HOSE ASSY
24	1-397		SIDE SPRAY WASHERS
25	1-393		1-1/8 18 UNEF MOUNTING KIT
26	1-527		W/S CART/BODY ASM (HOT)
27	1-002		W/S CARTRIDGE - HOT
28	1-526		W/S CART/BODY ASM (COLD)
29	1-001		W/S CARTRIDGE - COLD
30	1-027		WIDE SPREAD MOUNTING HARDWARE
31	10376		FLEX HOSE 12 IN.

KITCHEN FCT W/VEG SPRY  
9911

REV D EN-4673 06/20/23 APPROVED RS

**NEWPORT BRASS.**

t: 949.417.5207 | www.newportbrass.com