

NEWPORT BATH

Shower Drain Throat **277-01**

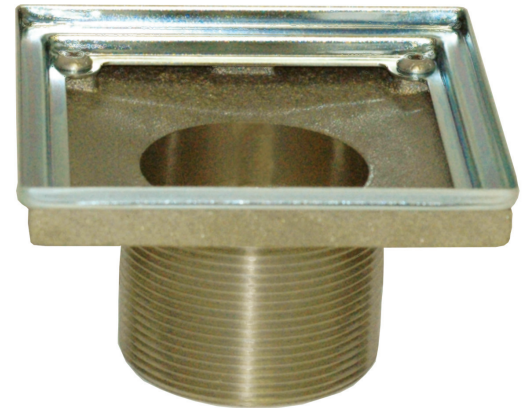
Features

- Solid brass and stainless steel construction
- O-ring retention system across 4" x 4" square inlet
- 2" IPS outlet
- Compatible with most 2" IPS drain bodies

Codes / Standards Compliance

Meets or exceeds the following at date of manufacture:

- ASME A112.18.2-2011/CSA B125.2-11
- IAPMO/cUPC
- All applicable US Federal and State material regulations



Colors / Finishes

- NA: None

Specified Model

Model	Description	Colors Finishes
277-01	Square Shower Drain Throat	<input type="checkbox"/> NA

Product Specification: Add size designator and "Color / Finish" suffix to Model number, below.

The Square Shower Drain Throat shall be made of solid brass and stainless steel construction. Product shall incorporate O-ring retention system across a 4" x 4" stainless steel inlet tray. Shower Drain Throat shall incorporate a 2" IPS outlet. Shower Drain Throat shall be Newport Brass Model 277-01.

