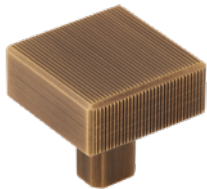


# DIGBETH COLLECTION

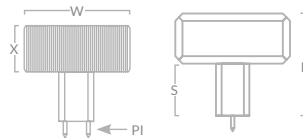
Discover luxury hardware redefined. Presenting industrial design-led style, the Digbeth collection offers a choice of textured hand-finished linear ridging or smooth brass. Frame each piece by opting for a striking backplate.



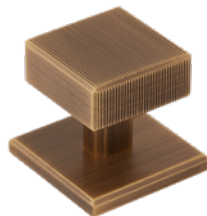
## DIGBETH RIDGED CABINET KNOB



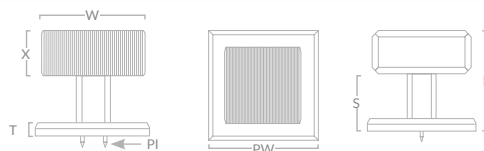
| Code             | Width sq. (W) | Projection (P) | Pin dia. (PI) | Stem (S) | X    |
|------------------|---------------|----------------|---------------|----------|------|
| DIGK/KNOBONLY/32 | 32mm          | 31mm           | 2.5mm         | 17mm     | 14mm |
| DIGK/KNOBONLY/38 | 38mm          | 33mm           | 2.5mm         | 17mm     | 16mm |



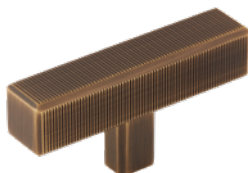
## DIGBETH RIDGED CABINET KNOB WITH BACKPLATE



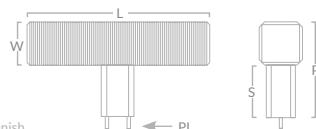
| Code    | Width sq. (W) | Projection (P) | Pin dia. (PI) | Stem (S) | Plate Width sq. (PW) | Plate Thickness (T) | X    |
|---------|---------------|----------------|---------------|----------|----------------------|---------------------|------|
| DIGK/32 | 32mm          | 35mm           | 2.5mm         | 22mm     | 38mm                 | 5mm                 | 14mm |
| DIGK/38 | 38mm          | 38mm           | 2.5mm         | 22mm     | 45mm                 | 5mm                 | 16mm |



## DIGBETH RIDGED T-BAR HANDLE



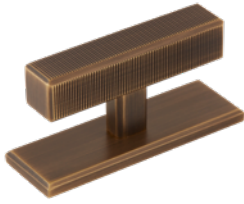
| Code             | Length (L) | Width sq. (W) | Projection (P) | Stem (S) | Pin Dia (PI) |
|------------------|------------|---------------|----------------|----------|--------------|
| DIGT/TBARONLY/67 | 67mm       | 16mm          | 33mm           | 17mm     | 2.5mm        |



Not suitable for appliance doors

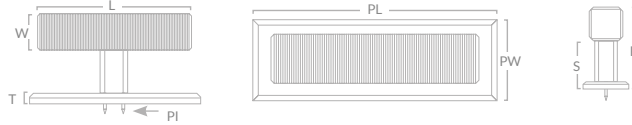
All product photographed in our satin antique satin lacquered finish

### DIGBETH RIDGED T-BAR HANDLE WITH BACKPLATE



| Code    | Length (L) | Width sq. (W) | Projection (P) | Stem (S) | Pin Dia (PI) | Plate Length (PL) | Plate Width (PW) | Plate Thickness (T) |
|---------|------------|---------------|----------------|----------|--------------|-------------------|------------------|---------------------|
| DIGT/67 | 67mm       | 16mm          | 38mm           | 22mm     | 2.5mm        | 77mm              | 25mm             | 5mm                 |

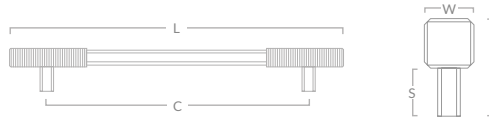
Not suitable for appliance doors



### DIGBETH RIDGED CABINET & APPLIANCE HANDLE



| Code                 | Centres (C) | Length (L) | Width sq. (W) | Stem (S) | Projection (P) |
|----------------------|-------------|------------|---------------|----------|----------------|
| DIG/PULLONLY/128     | 128mm       | 182mm      | 12.7mm        | 20mm     | 33mm           |
| DIG/PULLONLY/160     | 160mm       | 217mm      | 16mm          | 23mm     | 39mm           |
| DIG/PULLONLY/224     | 224mm       | 291mm      | 16mm          | 23mm     | 39mm           |
| DIG/PULLONLY/288     | 288mm       | 355mm      | 16mm          | 23mm     | 39mm           |
| DIG/PULLONLY/APP/384 | 384mm       | 461mm      | 19mm          | 30mm     | 49mm           |
| DIG/PULLONLY/APP/608 | 608mm       | 685mm      | 19mm          | 30mm     | 49mm           |



### DIGBETH RIDGED CABINET & APPLIANCE HANDLE WITH BACKPLATE



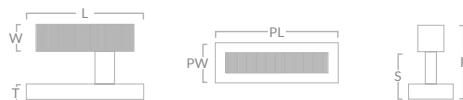
| Code        | Centres (C) | Length (L) | Width sq. (W) | Stem (S) | Projection (P) | Plate Thickness (T) | Plate Length (PL) | Plate Width (PW) |
|-------------|-------------|------------|---------------|----------|----------------|---------------------|-------------------|------------------|
| DIG/128     | 128mm       | 182mm      | 12.7mm        | 25mm     | 37mm           | 5mm                 | 191mm             | 22mm             |
| DIG/160     | 160mm       | 217mm      | 16mm          | 29mm     | 45mm           | 6.5mm               | 227mm             | 25mm             |
| DIG/224     | 224mm       | 291mm      | 16mm          | 29mm     | 45mm           | 6.5mm               | 301mm             | 25mm             |
| DIG/288     | 288mm       | 355mm      | 16mm          | 29mm     | 45mm           | 6.5mm               | 365mm             | 25mm             |
| DIG/APP/384 | 384mm       | 461mm      | 19mm          | 36mm     | 55mm           | 6.5mm               | 474mm             | 32mm             |
| DIG/APP/608 | 608mm       | 685mm      | 19mm          | 36mm     | 55mm           | 6.5mm               | 698mm             | 32mm             |



### DIGBETH RIDGED HOOK



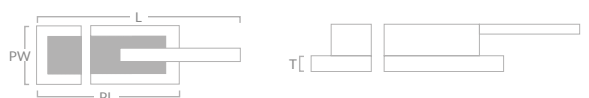
| Code        | Width sq. (W) | Projection (P) | Length (L) | Stem (S) | Plate Width (PW) | Plate Length (PL) | Plate Thickness (T) |
|-------------|---------------|----------------|------------|----------|------------------|-------------------|---------------------|
| DIG/HOOK/48 | 16mm          | 39mm           | 48mm       | 32mm     | 25mm             | 58mm              | 6.5mm               |



### DIGBETH RIDGED LATCH



| Code               | Projection (P) | Length (L) | Plate Width (PW) | Plate Length (PL) | Plate Thickness (T) |
|--------------------|----------------|------------|------------------|-------------------|---------------------|
| DIG/LATCH/FLUSH/45 | 20mm           | 108mm      | 45mm             | 64mm              | 5mm                 |
| DIG/LATCH/FLUSH/55 | 30mm           | 153mm      | 55mm             | 81mm              | 6mm                 |



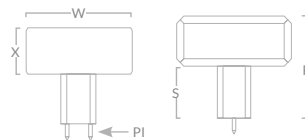
Product photographed in our satin antique satin lacquered finish



### DIGBETH PLAIN CABINET KNOB



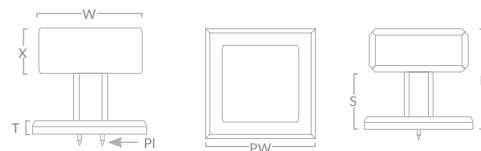
| Code                   | Width sq. (W) | Projection (P) | Pin dia. (PI) | Stem (S) | X    |
|------------------------|---------------|----------------|---------------|----------|------|
| DIGK/KNOBONLY/PLAIN/32 | 32mm          | 31mm           | 2.5mm         | 17mm     | 14mm |
| DIGK/KNOBONLY/PLAIN/38 | 38mm          | 33mm           | 2.5mm         | 17mm     | 16mm |



### DIGBETH PLAIN CABINET KNOB WITH BACKPLATE



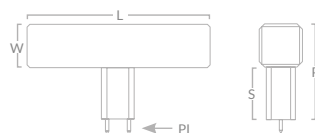
| Code          | Width sq. (W) | Projection (P) | Pin dia. (PI) | Stem (S) | Plate Width sq. (PW) | Plate Thickness (T) | X    |
|---------------|---------------|----------------|---------------|----------|----------------------|---------------------|------|
| DIGK/PLAIN/32 | 32mm          | 35mm           | 2.5mm         | 22mm     | 38mm                 | 5mm                 | 14mm |
| DIGK/PLAIN/38 | 38mm          | 38mm           | 2.5mm         | 22mm     | 45mm                 | 5mm                 | 16mm |



### DIGBETH PLAIN T-BAR HANDLE



| Code                   | Length (L) | Width sq. (W) | Projection (P) | Stem (S) | Pin Dia (PI) |
|------------------------|------------|---------------|----------------|----------|--------------|
| DIGT/TBARONLY/PLAIN/67 | 67mm       | 16mm          | 33mm           | 17mm     | 2.5mm        |



Not suitable for appliance doors

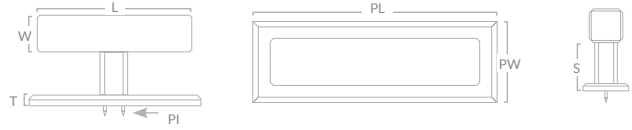
All product photographed in our burnished brass finish

### DIGBETH PLAIN T-BAR HANDLE WITH BACKPLATE



| Code          | Length (L) | Width sq. (W) | Projection (P) | Stem (S) | Pin Dia (PI) | Plate Length (PL) | Plate Width (PW) | Plate Thickness (T) |
|---------------|------------|---------------|----------------|----------|--------------|-------------------|------------------|---------------------|
| DIGT/PLAIN/67 | 67mm       | 16mm          | 38mm           | 22mm     | 2.5mm        | 77mm              | 25mm             | 5mm                 |

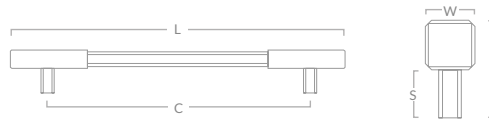
Not suitable for appliance doors



### DIGBETH PLAIN CABINET & APPLIANCE HANDLE



| Code                       | Centres (C) | Length (L) | Width sq. (W) | Stem (S) | Projection (P) |
|----------------------------|-------------|------------|---------------|----------|----------------|
| DIG/PULLONLY/PLAIN/128     | 128mm       | 182mm      | 12.7mm        | 20mm     | 33mm           |
| DIG/PULLONLY/PLAIN/160     | 160mm       | 217mm      | 16mm          | 23mm     | 39mm           |
| DIG/PULLONLY/PLAIN/224     | 224mm       | 291mm      | 16mm          | 23mm     | 39mm           |
| DIG/PULLONLY/PLAIN/288     | 288mm       | 355mm      | 16mm          | 23mm     | 39mm           |
| DIG/PULLONLY/APP/PLAIN/384 | 384mm       | 461mm      | 19mm          | 30mm     | 49mm           |
| DIG/PULLONLY/APP/PLAIN/608 | 608mm       | 685mm      | 19mm          | 30mm     | 49mm           |



### DIGBETH PLAIN CABINET & APPLIANCE HANDLE WITH BACKPLATE



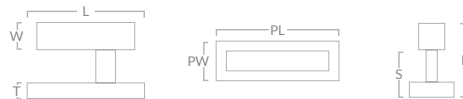
| Code              | Centres (C) | Length (L) | Width sq. (W) | Stem (S) | Projection (P) | Plate Thickness (T) | Plate Length (PL) | Plate Width (PW) |
|-------------------|-------------|------------|---------------|----------|----------------|---------------------|-------------------|------------------|
| DIG/PLAIN/128     | 128mm       | 182mm      | 12.7mm        | 25mm     | 37mm           | 5mm                 | 191mm             | 22mm             |
| DIG/PLAIN/160     | 160mm       | 217mm      | 16mm          | 29mm     | 45mm           | 6.5mm               | 227mm             | 25mm             |
| DIG/PLAIN/224     | 224mm       | 291mm      | 16mm          | 29mm     | 45mm           | 6.5mm               | 301mm             | 25mm             |
| DIG/PLAIN/288     | 288mm       | 355mm      | 16mm          | 29mm     | 45mm           | 6.5mm               | 365mm             | 25mm             |
| DIG/APP/PLAIN/384 | 384mm       | 461mm      | 19mm          | 36mm     | 55mm           | 6.5mm               | 474mm             | 32mm             |
| DIG/APP/PLAIN/608 | 608mm       | 685mm      | 19mm          | 36mm     | 55mm           | 6.5mm               | 698mm             | 32mm             |



### DIGBETH PLAIN HOOK



| Code              | Width sq. (W) | Projection (P) | Length (L) | Stem (S) | Plate Width (PW) | Plate Length (PL) | Plate Thickness (T) |
|-------------------|---------------|----------------|------------|----------|------------------|-------------------|---------------------|
| DIG/HOOK/PLAIN/48 | 16mm          | 39mm           | 48mm       | 32mm     | 25mm             | 58mm              | 6.5mm               |



### DIGBETH PLAIN LATCH



| Code                     | Projection (P) | Length (L) | Plate Width (PW) | Plate Length (PL) | Plate Thickness (T) |
|--------------------------|----------------|------------|------------------|-------------------|---------------------|
| DIG/LATCH/FLUSH/PLAIN/45 | 20mm           | 108mm      | 45mm             | 64mm              | 5mm                 |
| DIG/LATCH/FLUSH/PLAIN/55 | 30mm           | 153mm      | 55mm             | 81mm              | 6mm                 |



Product photographed in our burnished brass finish