



WIDESPREAD LAVATORY FAUCET

- 6" spout center to center
- 1/4" turn ceramic disc cartridge(s)
- Flexible braided hoses for ease of installation
- ϕ 1-1/4" all brass touch style pop up drain assembly
- 1.2 gpm (4.5 L /min) max flow rate
- All brass construction
- Over 30 finishes including 15 PVD finishes

Codes/Standards Applicable

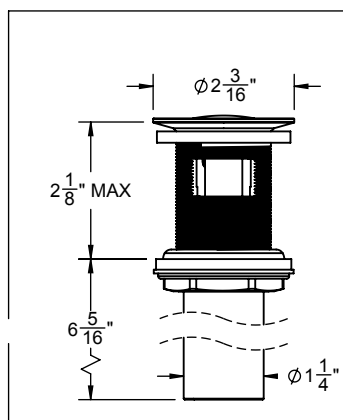
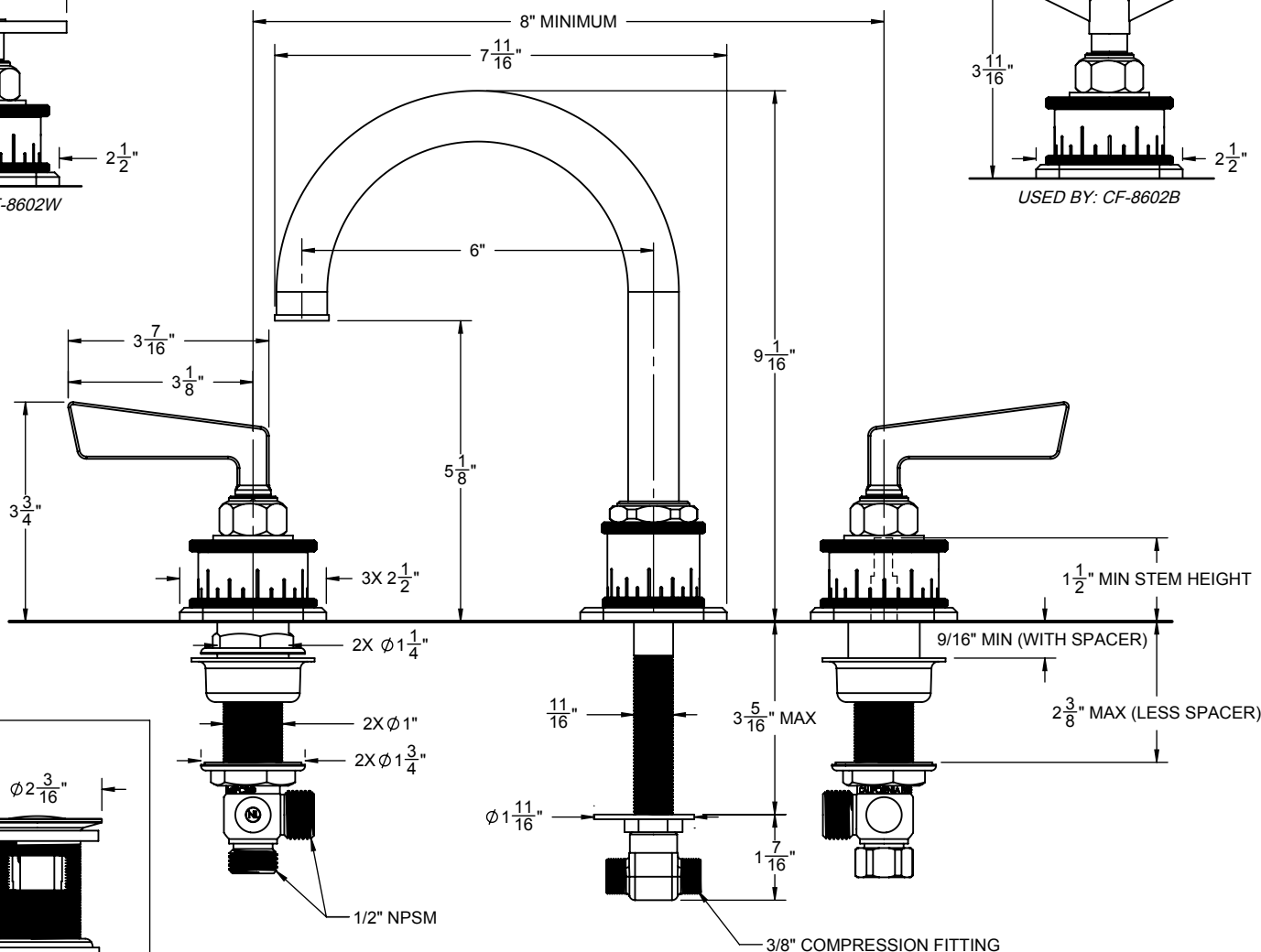
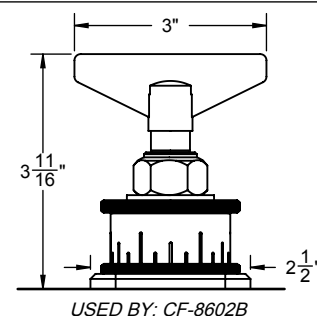
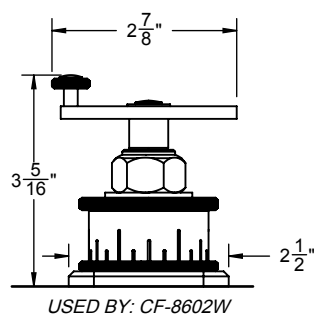
Product meets or exceeds the following:

- ASME A112.18.1/CSA B125.1
- NSF/ANSI 61 & NSF/ANSI 372
- CEC & DOE
- EPA WaterSense High Efficiency Lavatory
- ADA compliant (with lever handles)



CF-8602 SHOWN

CF-8602
CF-8602B
CF-8602W



<u>THROUGH-HOLE SPECIFICATIONS</u>		
<u>MIN</u>	<u>RECOMMENDED</u>	<u>MAX</u>
SPOUT: Ø 11/16"	Ø 1-3/8"	Ø 1-1/2"
VALVE: Ø 1-1/4"	Ø 1-3/8"	Ø 1-1/2"

SPECIFICATIONS SUBJECT TO CHANGE WITHOUT NOTICE

ALL DIMENSIONS SHOWN TO NEAREST 1/16"