



California Faucets®

CHRISTOPHER GRUBB

Collection



Christopher Grubb

Christopher is a modern day renaissance man. His achievements encompass Interior Designer, TV/Radio Personality, On-Air Host for House Tipster, Educator, and Product Designer.

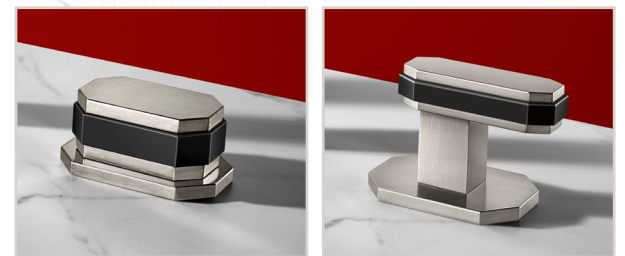
His creative vision and design expertise manifests itself in the debut of two uniquely elegant, inspired faucet collections.



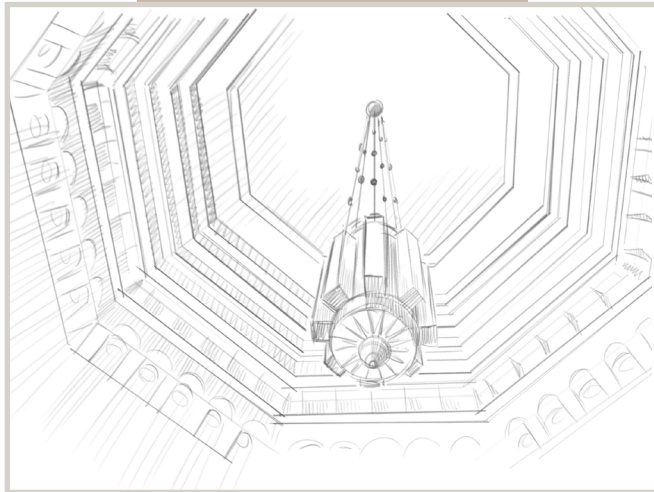
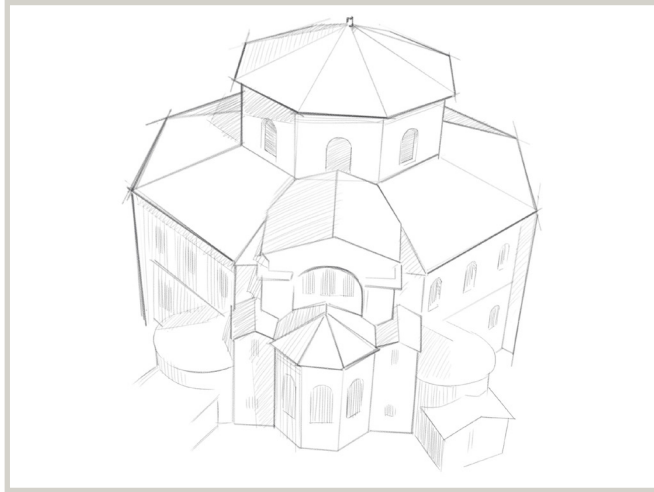


Doheny[™]

INSPIRED BY OCTAGONS,
AND AVAILABLE WITH
BANDED BLADE OR
LEVER HANDLES.



DECORATIVE CONTEMPORARY DESIGN FOR THE BATHROOM



Octagons have captured the architectural imagination for centuries. The dynamic shape of the octagon has been used in castles and featured in the domes of many churches and temples, representing the connection between the physical and the spiritual.



To watch our Christopher Grubb Doherty video, scan the QR code or go to calfaucets.com/videos



MAKE THE FAUCET
UNIQUELY YOURS.
ACCENT THE BAND
WITH ANY OF OUR
25 ARTISAN FINISHES.



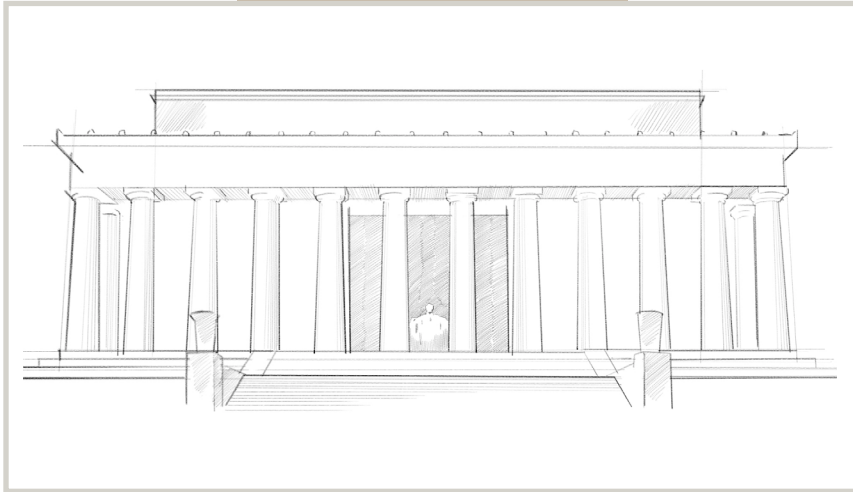


Trousdale™

INSPIRED BY ARCHITECTURAL
COLUMNS, THIS ELEGANTLY
FLUTED FAUCET IS AVAILABLE
WITH YOUR CHOICE OF
LEVER OR CROSS HANDLES.



TRADITIONAL MEETS TRANSITIONAL FOR THE MODERN BATHROOM



Trousdale from the Christopher Grubb collection is inspired by architectural columns. From ionic columns at the Parthenon to doric columns at the Lincoln memorial, this series infuses the faucets with the essence of these iconic masterpieces.



To watch our Christopher Grubb Trousdale video, scan the QR code or go to cafaucets.com/videos



WHILE NOTABLY ELEGANT
IN SATIN BRASS OR GOLD,
TROUSDALE IS STRIKING
IN ANY FINISH.



StyleDrain[®]

Each of our four luxury drain designs reflects Christopher's passionate belief that beauty truly is in the details.

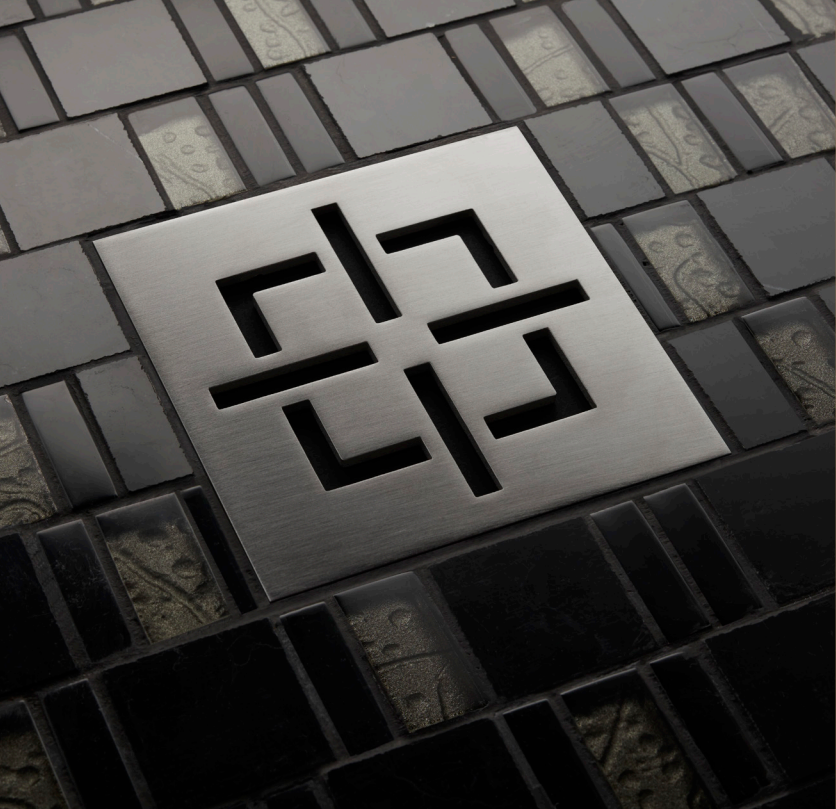
Inspired by the illustrious streets of Los Angeles, and ranging in style from eclectic "Hollywood glam" and sleek, modern styles to today's popular industrial and transitional looks, Grubb's StyleDrain concepts fit a broad array of design tastes.

Made of solid brass, this patented design features 25 artisan finishes to match any fitting. With no visible screws, it's easy on the eyes and feet. There are many stylish drains on the market; however, StyleDrain is the original and the best.



To watch our StyleDrain Work of Art video, scan the QR code or go to calfaucets.com/videos





California Faucets®

From our hands to your home®

californiafaucets.com
Made in California, USA

California Faucets proudly employs more American labor per faucet sold than nearly other faucet manufacturer.