



California Faucets®

Solimar™

WALL LAVATORY

TO-V7002-9

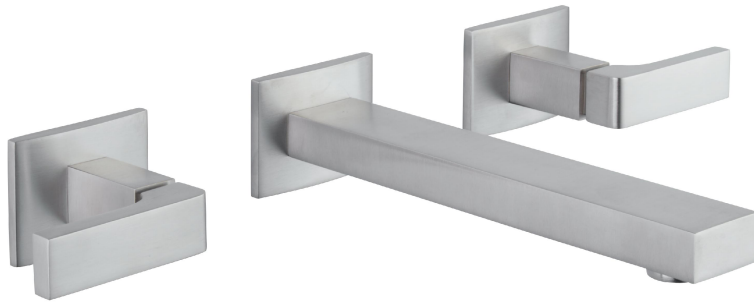
Features

- Over 28 finishes including 13 PVD finishes
- All brass construction
- 8-1/2" spout wall to center
- 1.2 gpm (4.5 L/min) max flow rate
- Rough valve (VL-R) sold separately

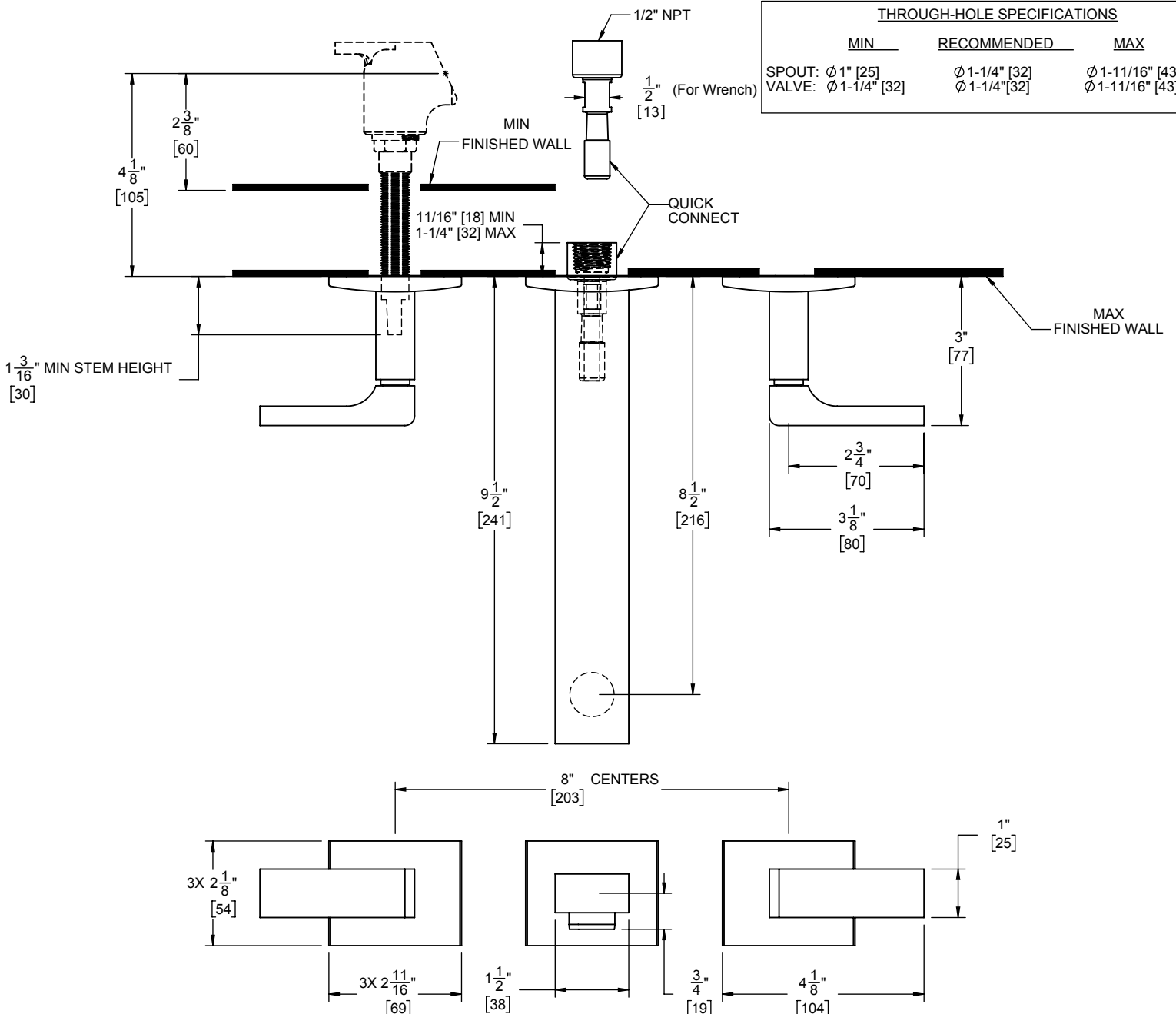
Codes/Standards

Product meets or exceeds the following:

- ASME A112.18.1/CSA B125.1
- NSF/ANSI 61 & NSF/ANSI 372
- CEC & DOE
- Commonwealth of MA
- EPA WaterSense High Efficiency Lavatory
- ADA compliant



| THROUGH-HOLE SPECIFICATIONS | | |
|-----------------------------|---------------|-----------------|
| MIN | RECOMMENDED | MAX |
| SPOUT: Ø 1" [25] | Ø 1-1/4" [32] | Ø 1-11/16" [43] |
| VALVE: Ø 1-1/4" [32] | Ø 1-1/4" [32] | Ø 1-11/16" [43] |



SPECIFICATIONS SUBJECT TO CHANGE WITHOUT NOTICE

DIMENSIONS SHOWN TO NEAREST 1/16" [DIMENSIONS SHOWN TO NEAREST 1MM]