

K-BXSGL-S Weldable Box

Type: Cylindrical

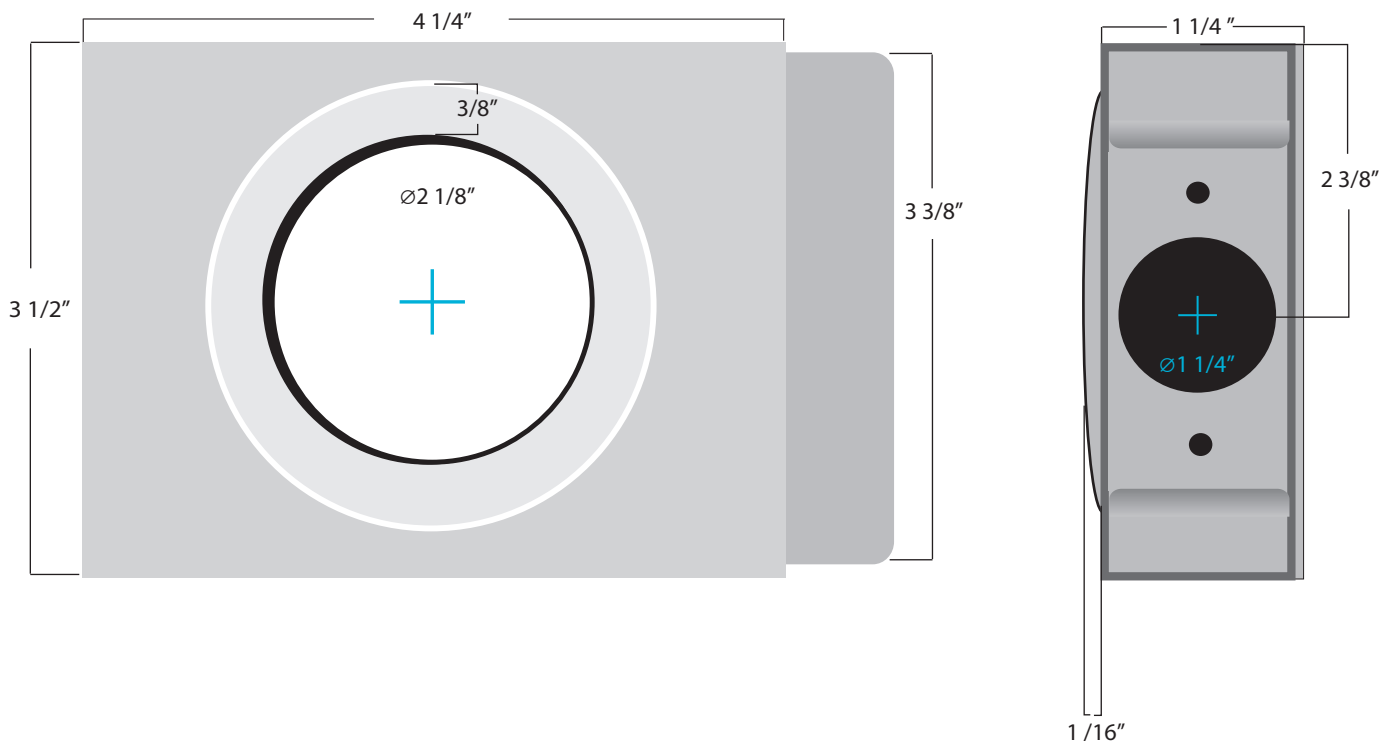
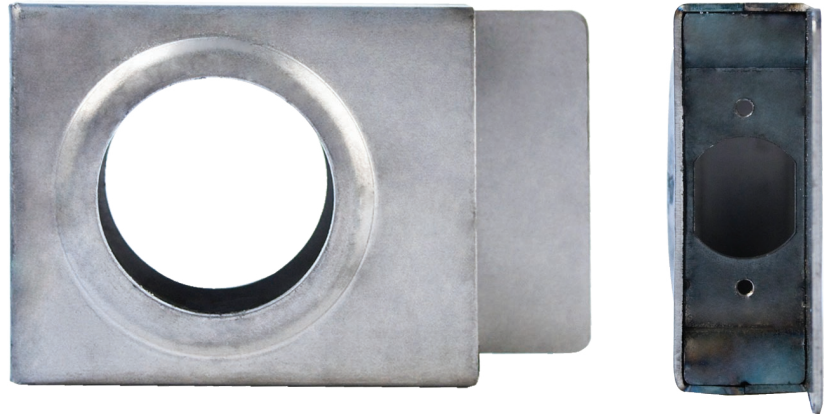
Dimensions:

4 1/4" W x 3 1/2" H x 1 1/4" D

Backset: 2 3/8"

Materials Available:

14 Gauge Steel.....K-BXSGL-S



www.keedex.com • 714-993-4300

This rendering is NOT to scale and dimensions are NOT exact. For precise technical information, please refer to the template for the lock you are using.