

Barn Door Flat Track Hardware Catalog

For Ordering, Questions and Information

phone: 619.708.9127

fax: 619.330.2288



Barn Door Flat Track Hardware Catalog

Page Content:

- Company Information
- Easy Ordering System



Dear Customer,

Thank you for considering Agave Ironworks as your manufacturing source for Barn Door Flat Track Hardware.

Agave Ironworks has been serving our product distributors, resellers and the trade since 2006. If you have been working with us for any length of time, we are confident that you appreciate our level of commitment to our product line as well as customer service.

If this is your first introduction to Agave Ironworks, we encourage you to view our website and consider taking the next step. In addition, to the Barn Door Flat Track Hardware offered in this Catalog, we offer a full line of decorative and functional door, gate, garage door, and shutter hardware including: Door Pulls, Speakeasy Grilles, Clavos (decorative nails), Latches, Faux Hinge Straps, Functional Hinges and Straps, custom work, and more.

Thanks again for your consideration and we look forward to serving you soon. Please don't hesitate to call or write if you have any questions or feedback.

www.agaveiron.com
phone: (619)708.9127
fax: (619)330.2288
email: info@agaveiron.com

EASY ORDERING SYSTEM:

- Decide Kit Style Desired (Pages 3 thru 12)
- Determine Track Length (Track length is normally double the width of the door)
- Decide on Finish Color or Brushed Stainless Steel

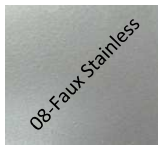
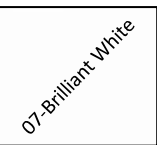
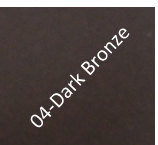
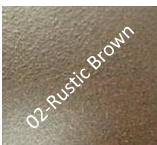
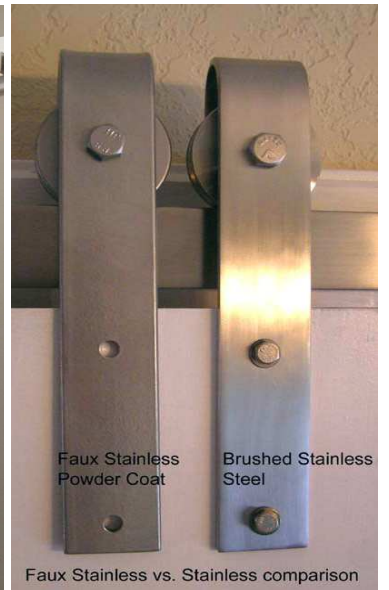
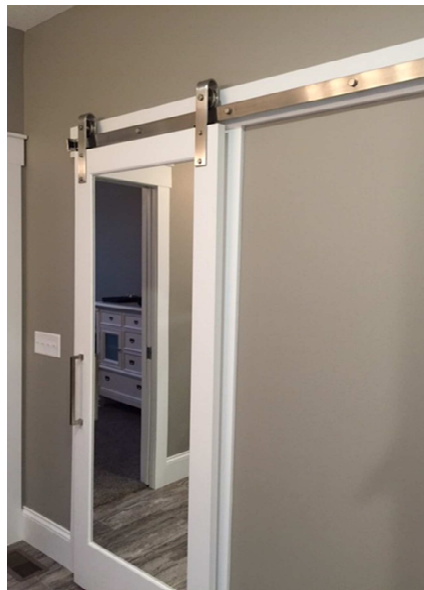
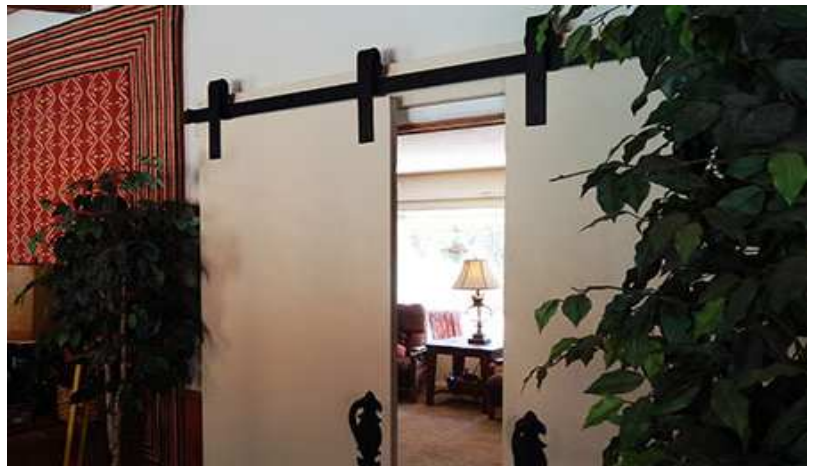
**For more complicated installations, e.g. Double Bi-Parting or Bi-Passing Doors, refer to the configurations and product information on Pages 16 and 17

Catalog Contents

Page 3 - 12	- Barn Door Kit Styles and Descriptions - Barn Door Kit MSRP
Page 13	- Basic Product and Specifications and Weight Limits
Page 14 - 15	- Component Items and MSRP
Page 15	- Finish Options and Information
Page 16	- Configuration Examples for Single and Bi-Parting Door Installations
Page 17	- Bi-Passing Door Diagram, Pictures and Information

Barn Door Flat Track Hardware Catalog

- Pricing for complete single door kits below
- Component pages follow Kit pages (for add-on items)
- Multiple door set-ups / configurations on last two pages



Item#: RH001: Basic Kit, Smooth Iron, Standard Duty

*In-Stock Powder Coats: 01-Flat Black, 04-Dark Bronze, 08-Faux Stainless

RH001	RH001-5	RH001-6	RH001-7	RH001-8	RH001-Custom
No Track	5' Track	6' Track	7' Track	8' Track	Custom Track
\$507.15	\$557.87	\$565.11	\$572.36	\$579.60	\$Call

FINISH INFORMATION: RH Steel Series:

Finishes 01 thru 08 include Zinc Rich Primer with Powder Coat Color Finish

*In Stock: Colors: 01, 04 and 08

**Special Order for other colors

Item#: SS001: Basic Kit, Stainless Steel, Standard Duty

*In-Stock Finish: 10-Brushed Stainless Steel

SS001	SS001-5	SS001-6	SS001-7	SS001-8	SS001-Custom
No Track	5' Track	6' Track	7' Track	8' Track	Custom Track
\$1,101.24	\$1,159.20	\$1,188.18	\$1,209.92	\$1,231.65	\$Call

FINISH INFORMATION: SS Stainless Steel Series:

Finish 10 - Brushed Stainless Steel:

Natural, Brushed, High Quality Stainless Steel

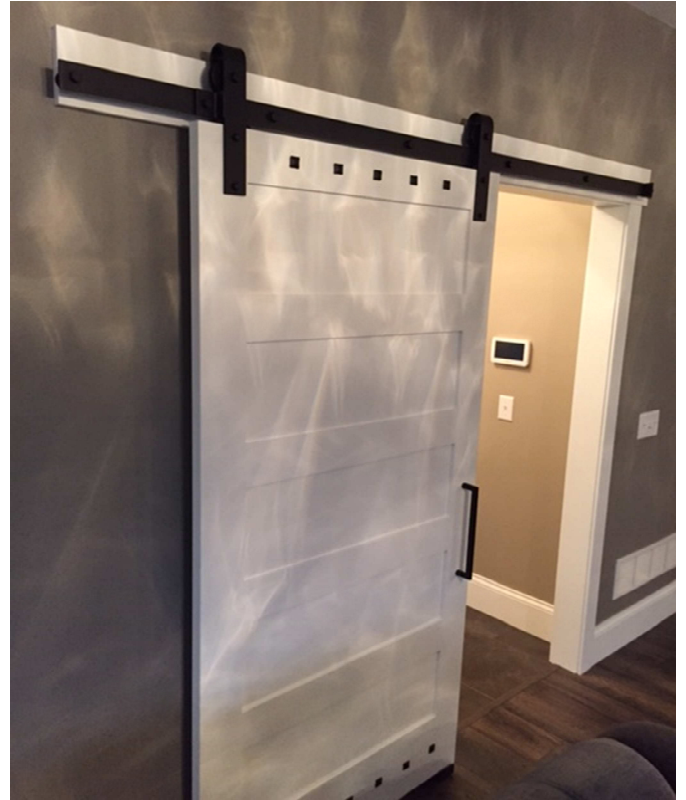
*In Stock Item

Kits above include everything needed for a single door installation. Multiple door configurations on last two pages.

Stock Track Lengths: 5' 6' 7' and 8' (Pre-Drilled unless Un-Drilled is specified)

Barn Door Flat Track Hardware Catalog

- Pricing for complete single door kits below
- Component pages follow Kit pages (for add-on items)
- Multiple door set-ups / configurations on last two pages



Item#: RH003: Basic Kit, Distressed Iron, Standard Duty

*In-Stock Powder Coats: 01-Flat Black, 04-Dark Bronze

RH003	RH003-5	RH003-6	RH003-7	RH003-8	RH003-Custom
No Track	5' Track	6' Track	7' Track	8' Track	Custom Track
\$543.38	\$635.84	\$641.24	\$646.65	\$652.05	\$Call

FINISH INFORMATION: RH Steel Series:

Finishes 01 thru 08 include Zinc Rich Primer with Powder Coat Color Finish

*In Stock: Colors: 01 and 04

**Special Order for other colors

Kits above include everything needed for a single door installation. Multiple door configurations on last two pages.

Stock Track Lengths: 5' 6' 7' and 8' (Pre-Drilled unless Un-Drilled is specified)

Barn Door Flat Track Hardware Catalog

- Pricing for complete single door kits below
- Component pages follow Kit pages (for add-on items)
- Multiple door set-ups / configurations on last two pages



Item#: RH005: Designer Kit, Smooth Iron, Standard Duty

*In-Stock Powder Coats: 01-Flat Black, 04-Dark Bronze, 08-Faux Stainless

RH005	RH005-5	RH005-6	RH005-7	RH005-8	RH005-Custom
No Track	5' Track	6' Track	7' Track	8' Track	Custom Track
\$521.64	\$572.36	\$579.60	\$601.34	\$623.07	\$Call

FINISH INFORMATION: RH Steel Series:

Finishes 01 thru 08 include Zinc Rich Primer with Powder Coat Color Finish

*In Stock: Colors: 01, 04 and 08

**Special Order for other colors

Item#: SS005: Designer Kit, Stainless Steel, Standard Duty

*Special Order Style: Substitute SS001 if immediate delivery required

SS005	SS005-5	SS005-6	SS005-7	SS005-8	SS005-Custom
No Track	5' Track	6' Track	7' Track	8' Track	Custom Track
\$1,101.24	\$1,159.20	\$1,188.18	\$1,209.92	\$1,231.65	\$Call

FINISH INFORMATION: SS Stainless Steel

Series: Finish 10 - Brushed Stainless Steel:

Natural, Brushed, High Quality Stainless Steel

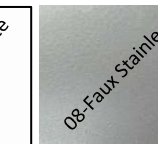
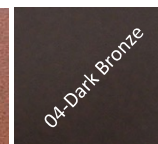
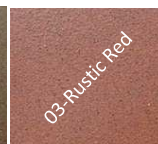
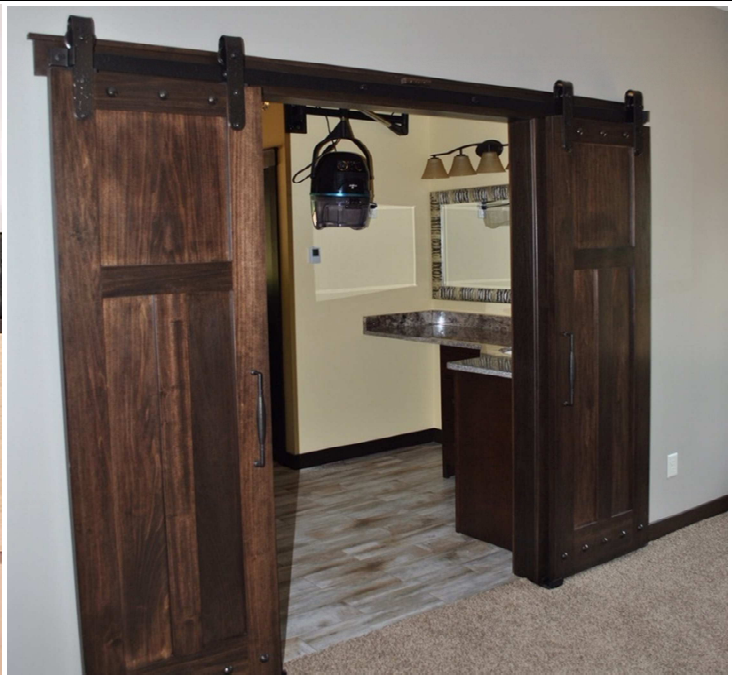
*Special Order - See SS001 for Stock item

Kits above include everything needed for a single door installation. Multiple door configurations on last two pages.

Stock Track Lengths: 5' 6' 7' and 8' (Pre-Drilled unless Un-Drilled is specified)

Barn Door Flat Track Hardware Catalog

- Pricing for complete single door kits below
- Component pages follow Kit pages (for add-on items)
- Multiple door set-ups / configurations on last two pages



RH007 not available in 10-Brushed Stainless Steel

Item#: RH007: Designer Kit, Distressed Iron, Standard Duty

*In-Stock Powder Coats: 01-Flat Black, 04-Dark Bronze

RH007	RH007-5	RH007-6	RH007-7	RH007-8	RH007-Custom
No Track	5' Track	6' Track	7' Track	8' Track	Custom Track
\$586.85	\$644.81	\$652.05	\$673.79	\$695.52	\$Call

FINISH INFORMATION: RH Steel Series:

Finishes 01 thru 08 include Zinc Rich Primer with Powder Coat Color Finish

*In Stock: Colors: 01 and 04

**Special Order for other colors

Kits above include everything needed for a single door installation. Multiple door configurations on last two pages.

Stock Track Lengths: 5' 6' 7' and 8' (Pre-Drilled unless Un-Drilled is specified)

Barn Door Flat Track Hardware Catalog

- Pricing for complete single door kits below
- Component pages follow Kit pages (for add-on items)
- Multiple door set-ups / configurations on last two pages



Item#: RH021: Low Profile Top Mount, Light Duty Steel

*In-Stock Powder Coats: 01-Flat Black, 04-Dark Bronze, 08-Faux Stainless

RH021	RH021-5	RH021-6	RH021-7	RH021-8	RH021-Custom
No Track	5' Track	6' Track	7' Track	8' Track	Custom Track
\$507.15	\$557.87	\$565.11	\$572.36	\$579.60	\$Call

FINISH INFORMATION: RH Steel Series:

Finishes 01 thru 08 include Zinc Rich Primer with Powder Coat Color Finish

*In Stock: Colors: 01, 04 and 08

**Special Order for other colors

Item#: SS021: Low Profile Top Mount, Light Duty Stainless

*In-Stock Finish: 10-Brushed Stainless Steel

SS021	SS021-5	SS021-6	SS021-7	SS021-8	SS021-Custom
No Track	5' Track	6' Track	7' Track	8' Track	Custom Track
\$1,101.24	\$1,159.20	\$1,188.18	\$1,209.92	\$1,231.65	\$Call

FINISH INFORMATION: SS Stainless Steel Series:

Finish 10 - Brushed Stainless Steel:

Natural, Brushed, High Quality Stainless Steel

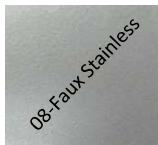
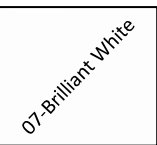
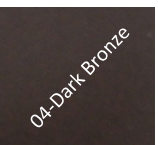
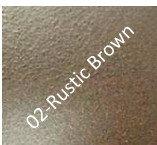
*In Stock Item

Kits above include everything needed for a single door installation. Multiple door configurations on last two pages.

Stock Track Lengths: 5' 6' 7' and 8' (Pre-Drilled unless Un-Drilled is specified)

Barn Door Flat Track Hardware Catalog

- Pricing for complete single door kits below
- Component pages follow Kit pages (for add-on items)
- Multiple door set-ups / configurations on last two pages



Item#: RH022: Standard Top Mount, Medium Duty Steel

*In-Stock Powder Coats: 01-Flat Black, 04-Dark Bronze, 08-Faux Stainless

RH022	RH022-5	RH022-6	RH022-7	RH022-8	RH022-Custom
No Track	5' Track	6' Track	7' Track	8' Track	Custom Track
\$507.15	\$557.87	\$565.11	\$572.36	\$579.60	\$Call

FINISH INFORMATION: RH Steel Series:

Finishes 01 thru 08 include Zinc Rich Primer with Powder Coat Color Finish

*In Stock: Colors: 01, 04 and 08

**Special Order for other colors

Item#: SS022: Standard Top Mount, Medium Duty Stainless

*In-Stock Finish: 10-Brushed Stainless Steel

SS022	SS022-5	SS022-6	SS022-7	SS022-8	SS022-Custom
No Track	5' Track	6' Track	7' Track	8' Track	Custom Track
\$1,101.24	\$1,159.20	\$1,188.18	\$1,209.92	\$1,231.65	\$Call

FINISH INFORMATION: SS Stainless Steel Series:

Finish 10 - Brushed Stainless Steel:

Natural, Brushed, High Quality Stainless Steel

*In Stock Item

Kits above include everything needed for a single door installation. Multiple door configurations on last two pages.

Stock Track Lengths: 5' 6' 7' and 8' (Pre-Drilled unless Un-Drilled is specified)

Barn Door Flat Track Hardware Catalog

- Pricing for complete single door kits below
- Component pages follow Kit pages (for add-on items)
- Multiple door set-ups / configurations on last two pages



Item#:RH023: Low Profile Strap Mount, Medium Duty Steel

*In-Stock Powder Coats: 01-Flat Black, 04-Dark Bronze, 08-Faux Stainless

RH023	RH023-5	RH023-6	RH023-7	RH023-8	RH023-Custom
No Track	5' Track	6' Track	7' Track	8' Track	Custom Track
\$507.15	\$557.87	\$565.11	\$572.36	\$579.60	\$Call

FINISH INFORMATION: RH Steel Series:

Finishes 01 thru 08 include Zinc Rich Primer with Powder Coat Color Finish

*In Stock: Colors: 01, 04 and 08

**Special Order for other colors

Item#:SS023: Low Profile Strap Mount, Medium Duty Stainless

*In-Stock Finish: 10-Brushed Stainless Steel

SS023	SS023-5	SS023-6	SS023-7	SS023-8	SS023-Custom
No Track	5' Track	6' Track	7' Track	8' Track	Custom Track
\$1,101.24	\$1,159.20	\$1,188.18	\$1,209.92	\$1,231.65	\$Call

FINISH INFORMATION: SS Stainless Steel Series:

Finish 10 - Brushed Stainless Steel:

Natural, Brushed, High Quality Stainless Steel

*In Stock Item

Kits above include everything needed for a single door installation. Multiple door configurations on last two pages.

Stock Track Lengths: 5' 6' 7' and 8' (Pre-Drilled unless Un-Drilled is specified)

Barn Door Flat Track Hardware Catalog

- Pricing for complete single door kits below
- Component pages follow Kit pages (for add-on items)
- Multiple door set-ups / configurations on last two pages



Item#:RH024: Arrow Kit, Smooth Iron, Standard Duty

*In-Stock Powder Coats: 01-Flat Black, 04-Dark Bronze, 08-Faux Stainless

RH024	RH024-5	RH024-6	RH024-7	RH024-8	RH024-Custom
No Track	5' Track	6' Track	7' Track	8' Track	Custom Track
\$521.64	\$572.36	\$579.60	\$601.34	\$623.07	\$Call

FINISH INFORMATION: RH Steel Series:

Finishes 01 thru 08 include Zinc Rich Primer with Powder Coat Color Finish

*In Stock: Colors: 01, 04 and 08

**Special Order for other colors

Item#:SS024: Arrow Kit, Brushed Stainless, Standard Duty

*In-Stock Finish: 10-Brushed Stainless Steel

SS024	SS024-5	SS024-6	SS024-7	SS024-8	SS024-Custom
No Track	5' Track	6' Track	7' Track	8' Track	Custom Track
\$1,101.24	\$1,159.20	\$1,188.18	\$1,209.92	\$1,231.65	\$Call

FINISH INFORMATION: SS Stainless Steel Series:

Finish 10 - Brushed Stainless Steel:

Natural, Brushed, High Quality Stainless Steel

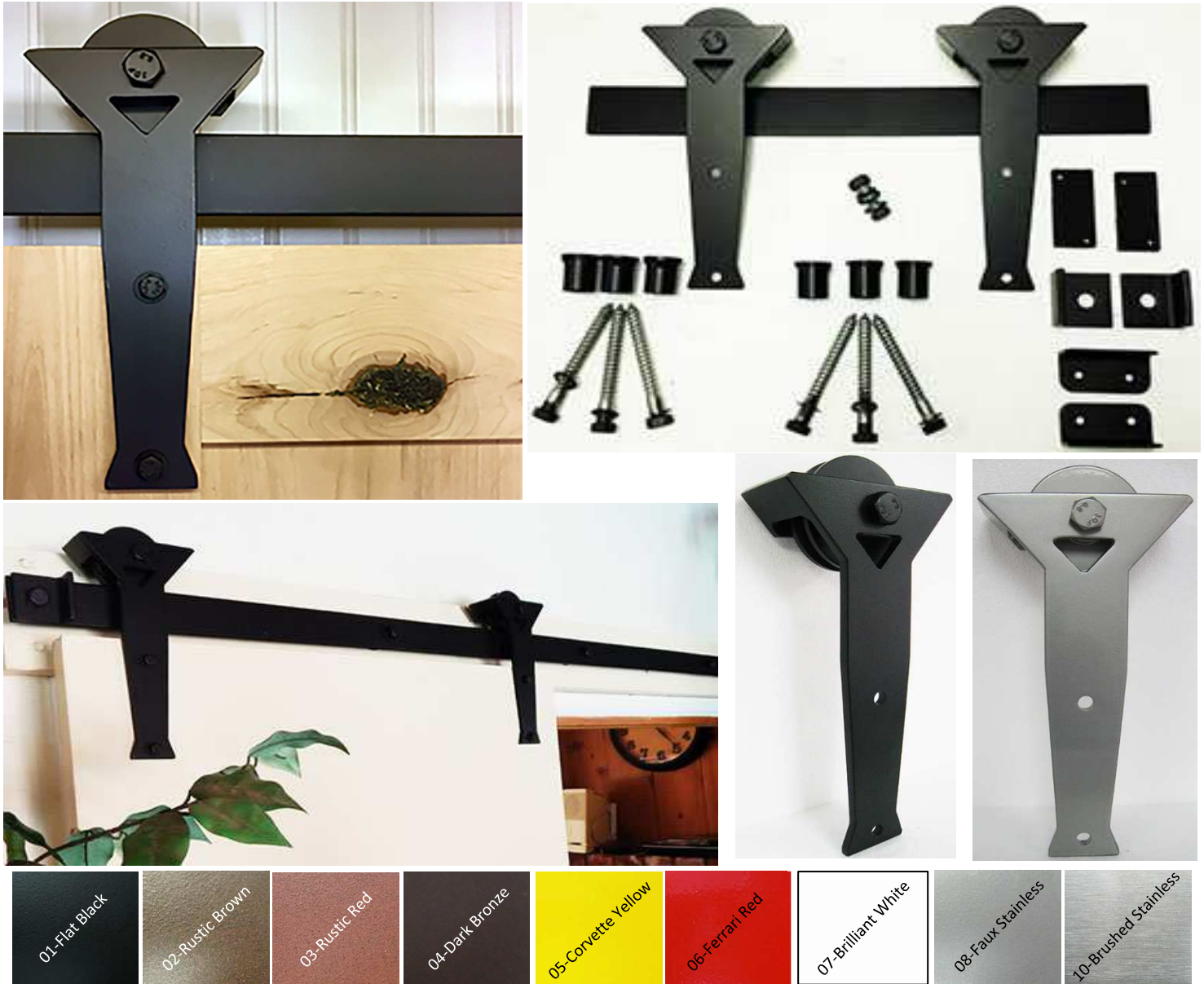
*In Stock Item

Kits above include everything needed for a single door installation. Multiple door configurations on last two pages.

Stock Track Lengths: 5' 6' 7' and 8' (Pre-Drilled unless Un-Drilled is specified)

Barn Door Flat Track Hardware Catalog

- Pricing for complete single door kits below
- Component pages follow Kit pages (for add-on items)
- Multiple door set-ups / configurations on last two pages



Item#:RH025: Martini Kit, Smooth Iron, Standard Duty

*In-Stock Powder Coats: 01-Flat Black, 04-Dark Bronze, 08-Faux Stainless

RH025	RH025-5	RH025-6	RH025-7	RH025-8	RH025-Custom
No Track	5' Track	6' Track	7' Track	8' Track	Custom Track
\$521.64	\$572.36	\$579.60	\$601.34	\$623.07	\$Call

FINISH INFORMATION: RH Steel Series:

Finishes 01 thru 08 include Zinc Rich Primer with Powder Coat Color Finish

*In Stock: Colors: 01, 04 and 08

**Special Order for other colors

Item#:SS025: Martini Kit, Brushed Stainless, Standard Duty

*In-Stock Finish: 10-Brushed Stainless Steel

SS025	SS025-5	SS025-6	SS025-7	SS025-8	SS025-Custom
No Track	5' Track	6' Track	7' Track	8' Track	Custom Track
\$1,101.24	\$1,159.20	\$1,188.18	\$1,209.92	\$1,231.65	\$Call

FINISH INFORMATION: SS Stainless Steel

Series: Finish 10 - Brushed Stainless Steel:

Natural, Brushed, High Quality Stainless Steel

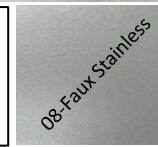
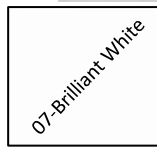
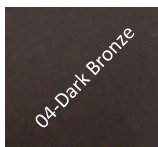
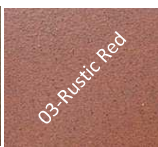
*In Stock Item

Kits above include everything needed for a single door installation. Multiple door configurations on last two pages.

Stock Track Lengths: 5' 6' 7' and 8' (Pre-Drilled unless Un-Drilled is specified)

Barn Door Flat Track Hardware Catalog

- Pricing for complete single door kits below
- Component pages follow Kit pages (for add-on items)
- Multiple door set-ups / configurations on last two pages



Item#:RH026: Horseshoe Kit, Smooth Iron, Heavy Duty

*In-Stock Powder Coats: 01-Flat Black, 04-Dark Bronze, 08-Faux Stainless

RH026	RH026-5	RH026-6	RH026-7	RH026-8	RH026-Custom
No Track	5' Track	6' Track	7' Track	8' Track	Custom Track
\$586.85	\$644.81	\$652.05	\$673.79	\$695.52	\$Call

FINISH INFORMATION: RH Steel Series:

Finishes 01 thru 08 include Zinc Rich Primer with Powder Coat Color Finish

*In Stock: Colors: 01, 04 and 08

**Special Order for other colors

Item#:SS026: Horseshoe Kit, Brushed Stainless, Heavy Duty

*In-Stock Finish: 10-Brushed Stainless Steel

SS026	SS026-5	SS026-6	SS026-7	SS026-8	SS026-Custom
No Track	5' Track	6' Track	7' Track	8' Track	Custom Track
\$1,159.20	\$1,217.16	\$1,231.65	\$1,267.88	\$1,289.61	\$Call

FINISH INFORMATION: SS Stainless Steel Series:

Finish 10 - Brushed Stainless Steel:

Natural, Brushed, High Quality Stainless Steel

*In Stock Item

Kits above include everything needed for a single door installation. Multiple door configurations on last two pages.

Stock Track Lengths: 5' 6' 7' and 8' (Pre-Drilled unless Un-Drilled is specified)

Basic Component Specifications and Information

Note: Full diagrams of each component are in our Specification Document found at agaveiron.com

Track Specifications Pre-Drilled (stock):

- 5' Long, 2" Wide, 1/4" Thick, 5 Standoff Holes at 1" from ends, and 14 1/2" apart inbetween
- 6' Long, 2" Wide, 1/4" Thick, 5 Standoff Holes at 1" from ends, and 17 1/2" apart inbetween
- 7' Long, 2" Wide, 1/4" Thick, 6 Standoff Holes at 1" from ends, and 16 7/16" apart inbetween
- 8' Long, 2" Wide, 1/4" Thick, 6 Standoff Holes at 1" from ends, and 18 3/4" apart inbetween

**Tracks with no holes for on-site drilling are available upon request.*

*** Track splicers available when lengths greater than 8' are required*

Wheel & Carrier Specifications / Weight Limits:

- Wheels made of Steel in Powder Coated RH Kits, and Stainless Steel in Brushed Stainless SS Kits

Door Weight Limits by Kit Style:

- RH001, RH003, RH005, RH007, RH024, and RH025 (Standard Duty Strap Carrier Kits) = 450 lbs
- RH021 and RH022 (Light Duty Top Mount Kits) = 150 lbs
- RH223 (Medium Duty Low Profile Strap Mount Kit) = 250 lbs
- RH226 (Heavy Duty Double Wheel Horsehoe Kit) = 800 lbs

** Top Mounts may handle additional weight if different fasteners are substituted. Consult your Contractor.*

*** Weight limits assume proper installation of Track mounted securely to building's structural framework*

Kit & Component Information:

Kits on previous pages include everything needed for a single door installation

- Each Kit includes: 2 ea Wheel Carriers, 6 ea Wall Standoffs, 1 ea Door Bottom Stabilizer Kit, 1 ea Anti-Jump Blocks, 1 ea Alternate End Stop Location Kit, Track length and color of choice.

Separate Component information and pricing on following pages

Finishes - Powder Coated Iron Options / Stainless Steel Option:

- 01-Flat Black, 02-Rustic Brown, 03-Rustic Red, 04-Dark Bronze, 05-Corvette Yellow, 06-Ferrari Red
- 07-Brilliant White, 08-Faux Stainless / 10-Brushed Stainless Steel *See Page 15 for additional finish info.

Stocking vs. Non-Stocking Options:

- See specific item(s) for availability. Powder coated iron RH Kits / Track are stocked only in colors indicated, or in Brushed Stainless Steel as indicated. Expect approximate 4 week lead time for non-stocking colors and 4 to 6 week lead times for custom pieces.

Configuring Product Needs for Specific Situations

- See Page 16 for Single and Bi-Parting Door Configurations and Products
- See Page 17 for Bi-Passing Door Configurations and Products

Barn Door Flat Track Hardware Catalog

Page Content:

- Component MSRP



Components *(Sold separately as Kit add-ons when needed)*

Item #	Flat Track	5' Track	6' Track	7' Track	8' Track
RH101	Flat Track, Smooth Iron	\$101.43	\$104.33	\$113.02	\$127.51
RH102	Flat Track, Smooth Iron - NO HOLES	\$101.43	\$104.33	\$113.02	\$127.51
RH103	Flat Track, Light Distressed Iron	\$115.92	\$121.72	\$130.41	\$144.90
RH104	Flat Track, Light Distressed Iron - NO HOLES	\$115.92	\$121.72	\$130.41	\$144.90
SS101	Flat Track, Brushed Stainless Steel	\$202.86	\$224.60	\$246.33	\$282.56
SS102	Flat Track, Brushed Stainless Steel - NO HOLES	\$202.86	\$224.60	\$246.33	\$282.56

Item #	Powder Coated Iron Wheel Carriers		MSRP
RH201	per each	Basic Smooth Wheel & Carrier Assembly (for RH001 Style Kit)	\$144.90
RH203	per each	Basic Distressed Wheel & Carrier Assembly (for RH003 Style Kit)	\$159.39
RH205	per each	Designer Smooth Wheel & Carrier Assembly (for RH005 Style Kit)	\$152.15
RH207	per each	Designer Distressed Wheel & Carrier Assembly (for RH007 Style Kit)	\$181.13
RH221	per each	Low Profile Top Mount Carrier, Smooth (for RH021 Style Kit)	\$144.90
RH222	per each	Standard Top Mount Carrier, Smooth (for RH022 Style Kit)	\$144.90
RH223	per each	Low Profile Strap Mount Carrier, Smooth (for RH023 Style Kit)	\$144.90
RH224	per each	Arrow Strap Standard Carrier, Smooth (for RH024 Style Kit)	\$159.39
RH225	per each	Martini Glass Standard Carrier, Smooth (for RH025 Style Kit)	\$159.39
RH226	per each	Horseshoe Double Wheel Carrier, Heavy Duty, Smooth (for RH026 Kit)	\$289.80

Item #	Brushed Stainless Steel Wheel Carriers		MSRP
SS201	per each	Basic Wheel & Carrier Assembly, Brushed Stainless (for SS001 Style Kit)	\$333.27
SS221	per each	Low Profile Top Mount Carrier, Brushed Stainless (for SS021 Style Kit)	\$333.27
SS222	per each	Standard Top Mount Carrier, Brushed Stainless (for SS022 Style Kit)	\$333.27
SS223	per each	Low Profile Strap Mount Carrier, Brushed Stainless (for SS023 Style Kit)	\$333.27
SS224	per each	Arrow Strap Standard Carrier, Brushed Stainless (for SS024 Style Kit)	\$333.27
SS225	per each	Martini Glass Standard Carrier, Brushed Stainless (for SS025 Style Kit)	\$333.27
SS226	per each	Horseshoe Double Wheel, Heavy Duty, Brushed Stainless (for SS026 Kit)	\$362.25

Item #	Wall Standoffs		MSRP
RH301	per each	Wall Stand-off, Lag Screw, Powder Coated Iron	\$23.91
SS301	per each	Wall Stand-off, Lag Screw, Stainless Steel	\$43.47

Item #	Standoff Spacers (for additional 3/16" Track Projection per bag)		MSRP
RH303	per each	Standoff Spacers, Powder Coated Iron (Bag of 6 ea 3/16" Spacers)	\$27.54
SS303	per each	Standoff Spacers, Brushed Stainless Steel (Bag of 6 ea 3/16" Spacers)	\$52.14

Item #	Bi-Pass Brackets (for Bi-Passing Door Configurations)		MSRP
RH305	per each	Bi Pass Bracket, Wall Mounting Hardware, Powder Coated Iron	\$49.27
SS305	per each	Bi Pass Bracket, Wall Mounting Hardware, Brushed Stainless Steel	\$94.19

Item #	End Stops		MSRP
RH501	per pair	End Stops, Smooth Iron, Powder Coated	\$17.39
RH701	per pair	End Stops, Light Distressed Iron, Powder Coated	\$20.29
SS501	per pair	End Stops, Brushed Stainless Steel	\$34.78

Barn Door Flat Track Hardware Catalog

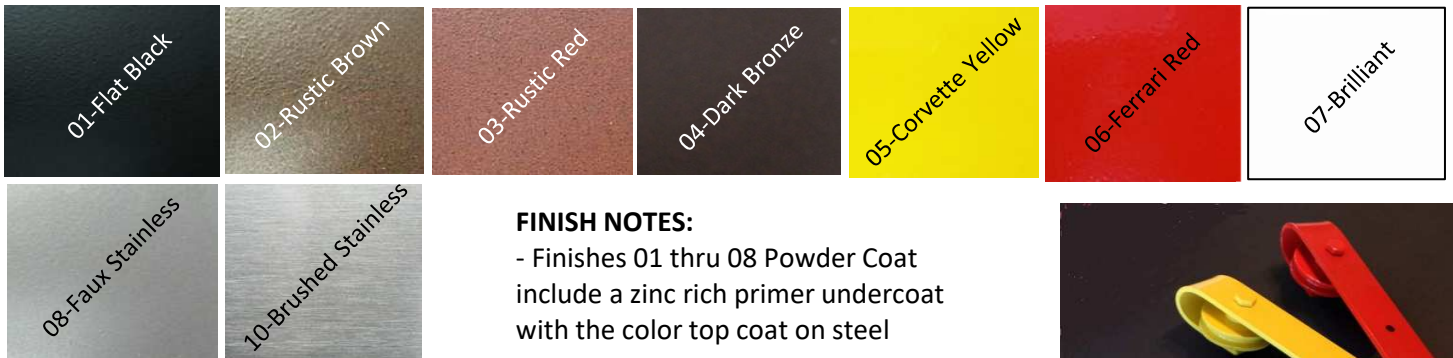
Page Content:

- Component MSRP (continued)
- Color & Finish Options



Components <i>(Sold separately as Kit add-ons when needed)</i>			
Item #	End Stop Relocation		MSRP
RH502	per each	End Stop Alternate Location Kit, Powder Coated Iron	\$23.92
SS502	per each	End Stop Alternate Location Kit, Stainless Steel	\$46.37
Item #	Anti Jump Blocks		
RH801	per pair	Anti Jump Blocks (Black Only)	\$20.29
Item #	Track Splicers (Connectors for long track runs)		
RH803	per each	Track Splicer, Powder Coated Iron	\$34.78
SS803	per each	Track Splicer, Brushed Stainless Steel	\$60.86
Item #	Door Bottom Stabilizers		
RH901	per each	Door Bottom Stabilizer, Powder Coated Iron	\$20.29
SS901	per each	Door Bottom Stabilizer, Brushed Stainless Steel	\$31.88

Finish Options



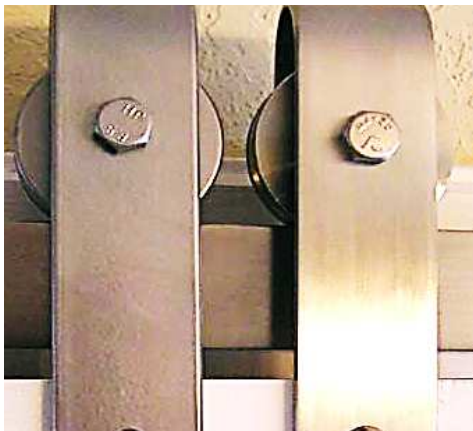
FINISH NOTES:

- Finishes 01 thru 08 Powder Coat include a zinc rich primer undercoat with the color top coat on steel

- Finish 10 is high quality Brushed Stainless Steel



Contemporary Finishes



Side by Side Comparison

- 08-Faux Stainless on left
- Brushed Stainless Steel on right

****SEE SPECIFIC KIT ITEMS FOR IN-STOCK VS. NON-STOCKING FINISHES**

Brushed Stainless Steel (SS Series)

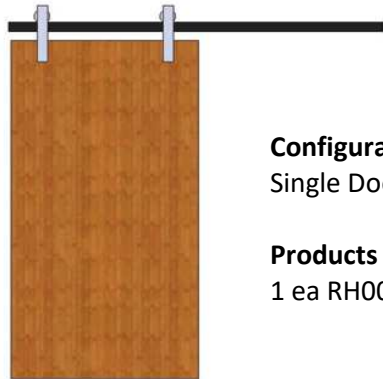


Unmistakeable beauty of real Brushed Stainless Steel

Barn Door Flat Track Hardware Catalog

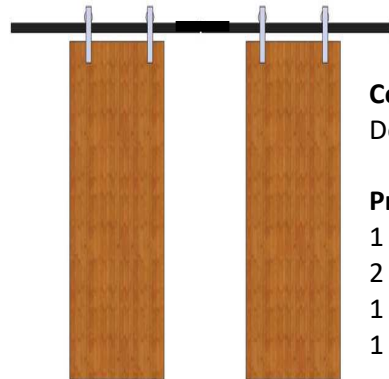
Page Content:

- Configuration Information for Project Planning



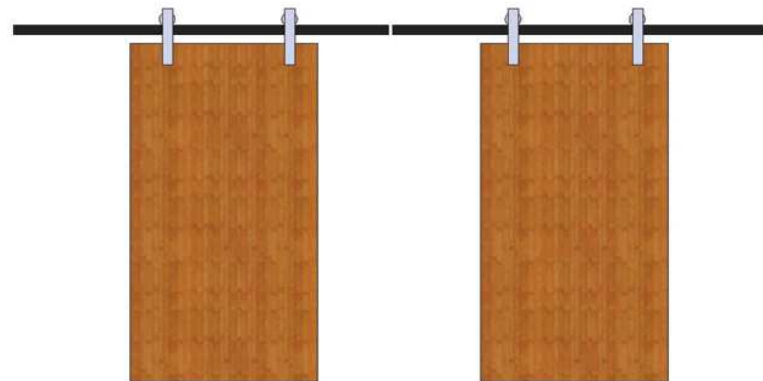
Configuration 1:
Single Door / Single Track

Products Needed:
1 ea RH001-6* Kit



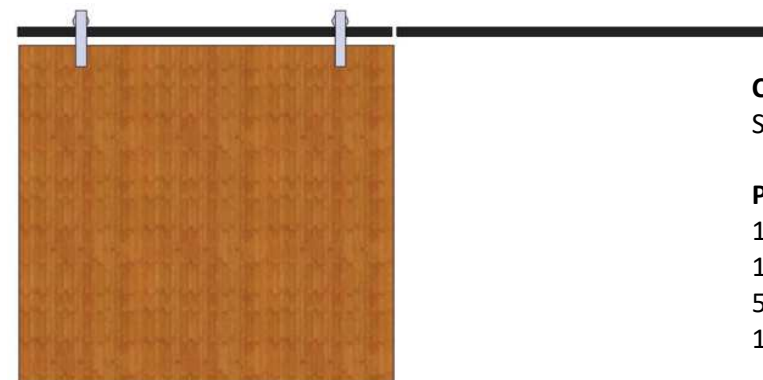
Configuration 2:
Double Door / Single Track

Products Needed:
1 ea RH001-6* Kit
2 ea RH201 Wheel Carriers
1 ea RH801 Anti Jump
1 ea RH901 Door Stabilizer



Configuration 3:
Double Doors / Double Track

Products Needed:
2 ea RH001-6* Kit
1 ea RH803 Splicer



Configuration 4:
Single Door / Double Track

Products Needed:
1 ea RH001-6* Kit
1 ea RH101-6 Flat Track
5 ea RH301 Standoffs
1 ea RH803 Splicer

NOTES:

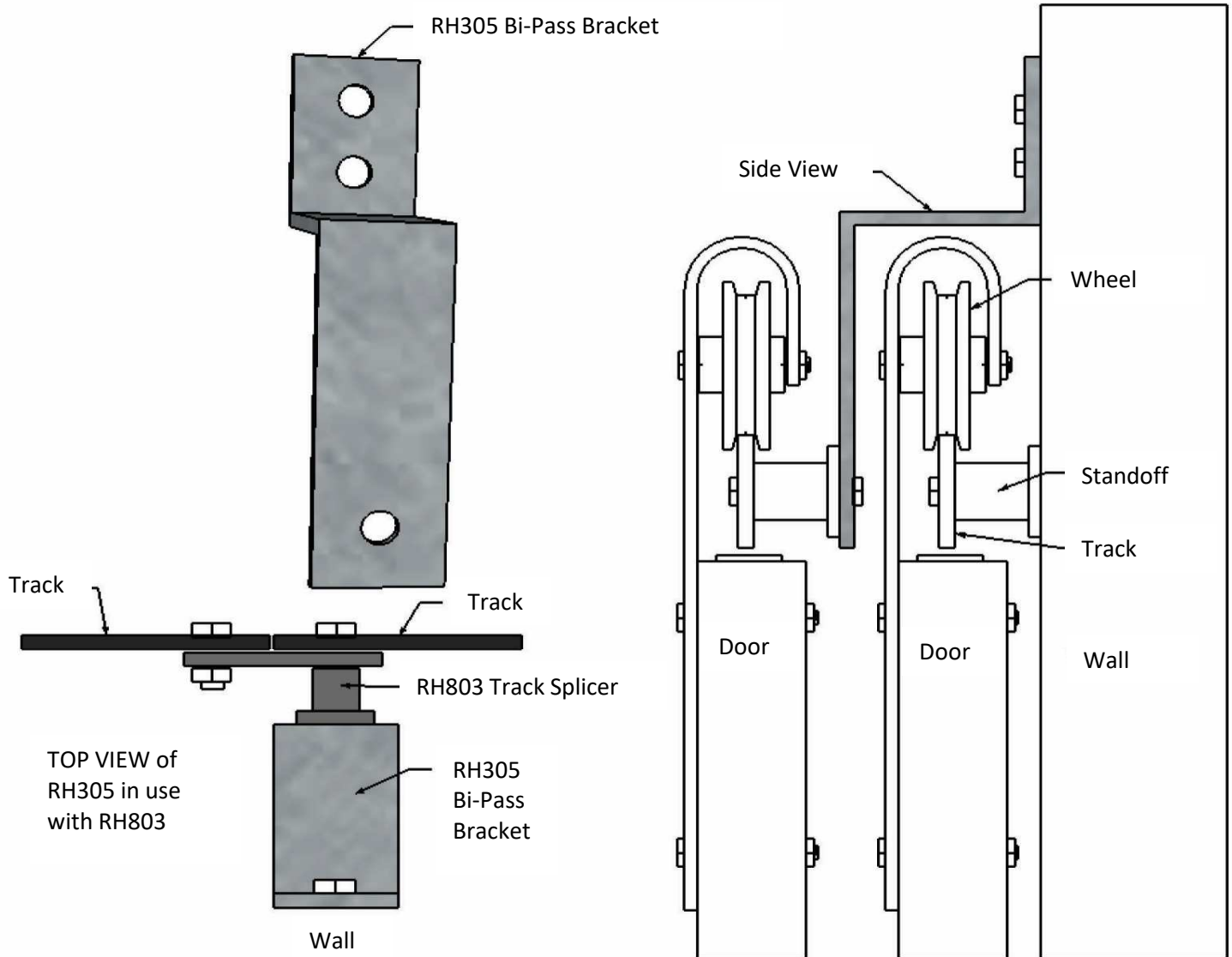
*RH001 was used as an example for product. Apply the appropriate Item#s to orders based on actual design(s) chosen.

1. Configurations 1 and 3 are based on 3' Doors (6' Tracks)
2. Configuration 2 is based 18" Doors (6' Track)
3. Configuration 4 is based on 6' Door (6' Tracks)

Important Items to know:

1. Width of Doors(s), to determine track length
2. Door thickness (doors over 2" thick may require one or more RH303 or SS303 3/16" Standoff Spacers)
3. Track length is normally double the width of the door(s)

Bi-Pass Configuration



Tracks with RH305 Bi-Pass Brackets shown in different colors for contrast