



# US Architectural Range

## ANSI/BHMA Commercial Hardware



**UL 3 Hour Fire Rated**



## TABLE OF CONTENTS

Mortise Locks ..... Page 1

Cylindrical Locks ..... page 2

Tubular Latches ..... Page 3

Commercial Deadbolts ..... Page 4

Electronic Locksets ..... Page 6

Exit Devices ..... Page 7

Door Closers ..... Page 8

Hinges ..... Page 9

Architectural Trim & Auxiliary Hardware..... Page 10

Disclaimer: As the publisher of this catalog, all information contained within has been deemed accurate to date. We are continuously improving and expanding our line in an effort to offer our clients the finest quality products and services. Therefore, Unison Hardware, Inc. reserves the right to alter this information or correct printing errors at any time.

# Mortise Locks



## MC7000 Series Grade 1



### Code Compliance



- ANSI/BHMA A156.13 Grade 1 Mortise Locks
- UL Listed for ANSI/UL10B and UL10C, CAN/ULC S104 up to 3 Hours
- UBC Standard 7-2 (1997) NFPA 252
- NFPA 80 National Fire Protection - Fire Door Assembly
- NFPA101 National Fire Protection - Life Safety
- ANSI/BHMA A156.18 Finishes
- ANSI A117.1 ADA Accessibility
- Electrification: ANSI/UL634, ANSI/UL294, ANSI/UL10C

### Specification

- Door Thickness: 1-3/4" (44.45mm) standard, Thick door kits available.
- Backset: 2-3/4" (70mm).
- Lever spindle 8x8mm square, Thumb-turn spindle 5x5mm square.
- Center Distances:  
Lever to cylinder: 3-7/8" (98mm)  
Lever to thumb-turn hub: 2-11/16" (68mm)
- Case Size: 4"x6-1/16"x15/16" (102mm x 154mm x 24mm)
- Deadbolt: 1" (25mm) throw in stainless steel.
- Latchbolt: 3/4" (19mm) throw with anti-friction.
- Optional keyway, keying service and IC core available.
- All mortise locks have emergency egress.
- Standard clutch/free-wheeling function for outside lever while locked
- Lock case: Heavy gauge plated steel
- Armored Front: Wrought stainless steel adjustable angle and attached by screws to the lock case front
- ANSI stainless steel strike, 4-7/8" x 1-1/4" curved lip, field reversible.
- Meets all Grade 1 security, operational, dimensional and cycling requirements of ANSI/BHMA A156.13 Series 1000, Lock body conforms to Federal Standard FF-H-106 Type 86/87

### Finishes

- Stocking: USD26D
- Special Order: US26, US3, US4, US15, US10, US10B, US32, US32D

### Functions

#### Non-Keyed Lock

- Passage (F01)
- Privacy (F22, F19)
- Communicating (F31)
- Half Dummy
- Full Dummy

#### Single Cylinder No Deadbolt

- Office, Inner Entry (F04)
- Classroom (F05)
- Storeroom (F07)

#### Single Cylinder Deadbolt

- Entrance (F20)
- Dormitory/Exit/Corridor (F13, F21)
- Closet
- Storeroom
- Hotel/Restroom

#### Double Cylinder No Deadbolt

- Apartment Entrance, Public Toilet (F09)
- Classroom Security Intruder Latchbolt (F32)
- Asylum/Institution (F30)

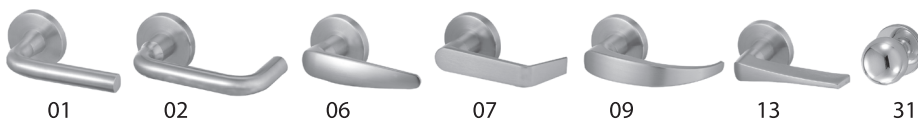
#### Double Cylinder Deadbolt

- Classroom (F33)
- Store Door (F14)
- Institution

#### Full Mortise Deadlocks

- Cylinder and Thumbturn (F17)
- Double Cylinder (F16)
- Classroom (F29)
- Single Cylinder (F18)
- Thumbturn Only
- Thumbturn x Coin - TurnRelease
- Thumbturn x Coin - Turn Release & Indicator

### Lever/Knob Designs



### Trim Options



### Mortise Cylinders and Keys



Schlage C Keyway, 6 Pin, with Clover Cam, 2 Keys.  
Standard Keyed Different (KD).  
Other Keying Services available.  
All trims uses 1-1/4" Mortise Cylinder for standard 1-3/4" door.  
Other sizes or keyway cylinder available. Order separately.

### Interchangeable Cores Only

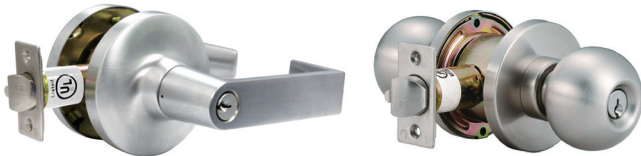


Small Format (SFIC) Core in Best A Keyway

# Cylindrical Locks



## CL/CK Series Grade 1



### Specifications

- **Door Thickness:** 1-3/8"(35mm) ~2"(51mm) doors standard.
- **Backset:** 2-3/4"(70mm) standard. 2-3/8"(60mm) and 5"(127mm) optional.
- **Cylinder:** 6-pin anti-pick, solid brass cylinder.
- **Keys:** Two (2) keys per lock. Schlage C keyway. Keyed-Different standard. Keyed-Alike, Construction key, Master Key suite or other keyway available by special order.
- **Clutch Function (CL):** Outside lever free wheeling while locked to prevent vandalism.
- **Latchbolt:** 1/2" (12.7mm) throw, stainless steel 3 hour fire rated latchbolt. Reversible for flat and beveled doors.
- **Faceplate:** Stainless steel or brass faceplate.

### Finishes

- Stocking: US26D
- Special Order: US26, US3, US4, US10B, US32D

### Code Compliance



- ANSI A156.2 Grade 1, UL 10C and UBC 7.2 for positive pressure.
- ANSI A117.1 ADA Barrier-free Accessibility
- C-UBC California Uniform Builders Code-2001
- NFPA-80 National Fire Protection-1999
- NFPA-101 National Fire Protection-Life Safety-2000

### Functions

#### Keyed Locks:

- Entrance/Office Lock (F82)
- Entrance (F109)
- Classroom Lock (F84)
- Intruder Classroom Lock (F110)
- Storeroom Lock (F86)
- Store Door Lock (F91)
- Institution Lock (F87)

#### Non-Keyed Locks:

- Passage Latch (F75)
- Bath/Bedroom Privacy Lock (F76)
- Exit/Communicating Lock (F111)
- Single Dummy Trim

### Lever/Knob Designs



## BL/BM/BK Series Grade 2 Cylindrical Locks



### Specifications

- **Rose:** 3-3/8" (86mm) diameter for BL / 3" (76mm) diameter for BM, BK
- **Door Thickness:** 1-1/2"(38mm) ~ 2"(51mm) doors standard.
- **Backset:** 2-3/4"(70mm) standard. 2-3/8"(60mm) and 5"(127mm) optional.
- **Cylinder:** 6-pin anti-pick tumbler, solid brass cylinder.
- **Keys:** Two (2) keys per lock. Schlage C keyway. Keyed-Different standard. Keyed-Alike, Construction key, Master Key suite or other keyway available by special order.
- **Clutch Function (CL):** Outside lever free wheeling while locked to prevent vandalism.
- **Latchbolt:** 1/2"(13mm) throw, stainless steel 3 hour fire rated latchbolt. Reversible for flat and beveled doors.
- **Faceplate:** Stainless steel or brass faceplate.

### Code Compliance



- ANSI A156.2 Grade 2
- UL 10C and UBC 7.2 3 hour Fire Rated for positive pressure.
- ANSI A117.1 ADA Barrier-free Accessibility
- C-UBC California Uniform Builders Code-2001
- NFPA-80 National Fire Protection-1999
- NFPA-101 National Fire Protection-Life Safety-2000

### Finishes

- Stocking: US26D
- Special Order: US26, US3, US4, US10B, US32D

### Functions

#### Non-Keyed Locks:

- Passage Latch (F75)
- Bath/Bedroom Privacy Lock (F76)
- Communicating/Exit Lock
- Single Dummy Trim

#### Keyed Locks:

- Entrance (F109)
- Classroom Lock (F84)
- Storeroom Lock (F86)

## Tubular Latches



### TL4 Tubular Latch Grade 2



#### Specifications

- 28 Degree Latch Retraction
- Backset: 2-3/8" (60mm), 2-3/4" (70mm)
- Function: Passage, Privacy
- Faceplate: 1" x 2-1/4"

#### Functions

##### Non-Keyed Lock:

- Passage
- Privacy
- Full Dummy
- Half Dummy
- Half Passage

##### Single Cylinder Deadbolt:

- Entry

##### Double Cylinder Deadbolt:

- Entry

#### Finishes

- Stocking: US32D, US32, US10B

#### Code Compliance



- ANSI A156.2 Grade 2
- UL 10C and UBC 7.2 3 hour Fire Rated for positive pressure.
- ANSI A117.1 ADA Barrier-free Accessibility
- C-UBC California Uniform Builders Code-2001
- NFPA-80 National Fire Protection-1999
- NFPA-101 National Fire Protection-Life Safety-2000

#### Lever Designs



101 Cologne (32, 32D)



102 Munich (32, 32D)



103 Oslo (32, 32D, 10B)



104 Brussels (32, 32D, 10B)



105 Frankfurt (32, 32D, 10B)



106 Copenhagen (32, 32D, 10B)



221 Aurora (32, 32D, SP\*, 10B)



243 Sunrise (32, 32D, 10B)



345 Tokyo (32, 32D)

#### Trim Options



RA Rose



SE Rose



GT Rose



GS Rose

# Commercial Deadbolts



## CX Series Grade 1



### Specifications

- **Door Thickness:** 1-9/16"(40mm) ~ 2"(51mm) doors standard.
- **Backset:** 2-3/8"(60mm) or 2-3/4"(70mm)
- **Exposed Trim:** 2-1/2"(63.5mm) diameter solid brass, one-piece design exceeds BHMA/ANSI Grade 1 security against hammer and crowbar prying attacks.
- **Dead Bolt:** 1"(25mm) throw deadbolt with saw-resistant hardened steel core.
- **Cylinder & Keys:** 6-pin anti-pick cylinder in Schlage C keyway keyed different with 2 brass keys per lock. Small Format Interchange Core (SFIC) available by specifying IC, Cores order separately.
- **Keying Options:** Keyed Alike, Master keying, Grand Master Keying, and Construction Keying available by special order. Nickel silver keys available by special order.

### Code Compliance



- ANSI/BHMA A156.36 & A156.5 Grade 1
- UL Listed for UL10B and UL10C, Up to 3 Hours
- UBC Standard 7-2 (1997) NFPA 252
- NFPA 80 National Fire Protection - Fire Door Assembly
- NFPA101 National Fire Protection - Life Safety
- ANSI/BHMA A156.18 Finishes
- ANSI A117.1 ADA Accessibility

### Finishes

- Stocking: US26D
- Special Order: US26, US3, US4, US15, US10, US10B

### Functions

- Single Cylinder (E1251)
- Cylinder Only x Blank Plate (E2161)
- Double Cylinder (E2141)
- Classroom Deadbolt (E2171)
- Door Bolt (E2191)

## BX Series Grade 2



### Specifications

- **Door Thickness:** 1-3/8"(35mm) ~ 2"(51mm) doors standard.
- **Backset:** 2-3/8"(60mm) or 2-3/4"(70mm)
- **Exposed Trim:** 2-1/2"(63.5mm) diameter solid cast alloy, one-piece design exceeds BHMA/ANSI Grade 2 security against hammer and crowbar prying attacks.
- **Dead Bolt:** 1"(25mm) throw deadbolt with saw-resistant hardened steel core.

### Code Compliance



- ANSI/BHMA A156.36 & A156.5 Grade 2
- UL Listed for UL10B and UL10C, Up to 3 Hours
- UBC Standard 7-2 (1997) NFPA 252
- NFPA80 National Fire Protection - Fire Door Assembly
- NFPA101 National Fire Protection - Life Safety
- ANSI/BHMA A156.18 Finishes
- ANSI A117.1 ADA Accessibility

### Finishes

- Stocking: US26D
- Special Order: US26, US3, US4, US15, US10, US10B

### Functions

- Single Cylinder (E0152)
- Double Cylinder (E0142)
- Door Bolt (E0192)

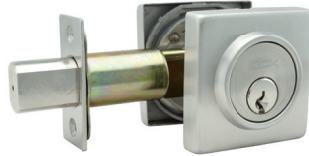
# Commercial Deadbolts



## CD/LD Series Grade 2



CD



LD

### Specifications

- Door Thickness: 1-3/4" (44mm) standard  
Thin door and thick door kits available.
- Backset: 2-3/8" (60mm) standard  
2-3/4" (70mm) optional
- Cylinder & Keys: Schlage C Keyway  
Cylinder 5-pin with 2 keys.  
Keying service available.
- Deadbolt: 1" throw with hardened roller pin
- Fully concealed fixing: M5 Thru-bolts
- UL fire rated deadbolt available.

### Code Compliance



- ANSI/BHMA A156.36 & A156.5 Grade 2
- UL Listed for UL10B and UL10C, Up to 3 Hours
- UBC Standard 7-2 (1997) NFPA 252
- NFPA80 National Fire Protection - Fire Door Assembly
- NFPA101 National Fire Protection - Life Safety
- ANSI/BHMA A156.18 Finishes
- ANSI A117.1 ADA Accessibility

### Finishes

- Stocking: US32D, US32, US10B

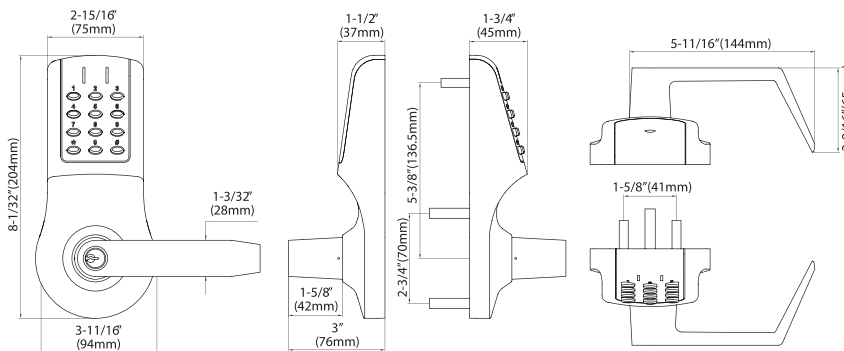
### Functions

- Single Cylinder
- Double Cylinder
- Communicating

# Electronic Locksets



## EL60 Series Grade 1



### Features

- Grade 1
- 3 Hour Fire Rated
- 100 Users
- Passage Mode
- Two-Remote Switches
- Visual & Audible Indicators
- Schlage C Keyway
- 200,000 Cycle Battery Life

### Finishes

Stocking: US26D(626) Satin Chrome

### Code Compliance



- ANSI A156.2 Grade 1, UL 10C and UBC 7.2 for positive pressure.
- ANSI A117.1 ADA Barrier-free Accessibility
- C-UBC California Uniform Builders Code-2001
- NFPA-80 National Fire Protection-1999
- NFPA-101 National Fire Protection-Life Safety-2000

### Specifications

- **Door Thickness:** 1-3/8"(35mm) ~2"(51mm) doors standard.
- **Door Prep:** Crossbore 2-1/8"(54mm), Edgebore 1"(25mm), Latch face 2-1/4"(57mm) x 1-1/8"(28.6mm).
- **Backset:** 2-3/4"(70mm) standard. 2-3/8"(60mm) and 5" (127mm) optional.
- **Cylinder:** 6-pin anti-pick, solid brass cylinder.
- **Keys:** Two (2) keys per lock. Schlage C keyway. Keyed-Different standard. Keyed-Alike, Construction key, Master key suite, or other keyway available by special order.
- **Handing:** Non-handed.
- **Trim:** Solid zinc diecast levers. 55° lever rotation for full latch retraction.
- **Clutch Function (CL):** Outside lever free wheeling while locked to prevent vandalism.
- **Latchbolt:** 1/2" (12.7mm) throw, stainless steel 3 hour fire rated latchbolt. Reversible for flat and beveled doors.
- **Faceplate:** 2-1/4"(57mm) x 1-1/8"(28.6mm) square corner standard. Stainless steel or brass faceplate.
- **Strike:** ANSI curved lip strike 4-7/8"(124mm) x 1-1/4"(32mm) x 1-1/4"(32mm) lip to center standard. Full lip strike or T strike available.



## Exit Devices



### ED93 Series Grade 1



#### Application and Features

- INOX ED93 and ED93F Rim Exit Devices are suited for most single door applications. They can also be used on double doors when using a mullion.
- INOX ED93 and ED93F Rim Exit Devices are non-handed with a universal design that allows them to easily retrofit the Von Duprin 99 series installation when paired with our Inox exit device trim.
- INOX ED93 and ED93F Rim Exit Devices will fit all doors up to 36" in width and 1-3/4" in thickness. 48" width devices can be ordered as an option. Cylinder dogging kits are also available as an option on a non-rated device.
- RIM, SVR, LBR, CVR, Mortise Device available
- Quiet Motor Driven Electrified Latch Retraction and Switches
- Cylinder Dogging, Alarm Kit, Glass Bead Shim Kits & Mullions available

#### Finishes:

- Stocking: US32D
- Special Order: AL-US28, DU-US20, GD, US3, US4, US26, US26D, US10B, US10

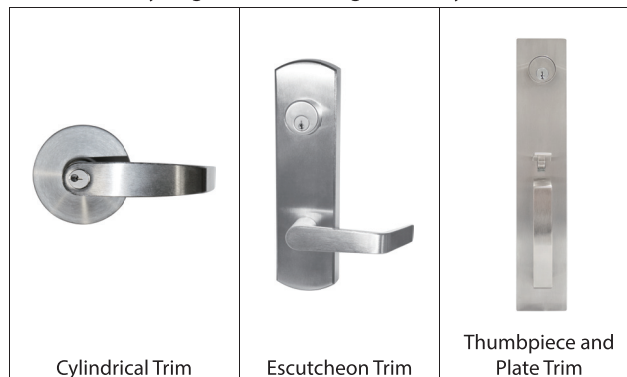
#### Code Compliance



- ANSI/BHMA A156.3 Grade 1 Exit Devices
- ANSI/BHMA A156.29 Exit Lock and Alarm
- UL Listed for ANSI/UL10B and UL10C, CAN/ULC S104 up to 3 Hours
- UBC Standard 7-2 (1997) NFPA 252
- ANSI/UL 305 and CAN/ULC-S132
- NFPA 80 National Fire Protection - Fire Door Assembly
- NFPA101 National Fire Protection - Life Safety
- ANSI/BHMA A156.18 Finishes
- ANSI A117.1 ADA Accessibility
- Electrification - ANSI/UL634, ANSI/UL294, ANSI/UL10C

#### Optional Trims

Function: Entry, Night Latch, Passage, Dummy



### ED70 Series Grade 1



#### Application and Features

- INOX ED70 and ED70F Rim Exit Devices are suited for most single door applications. They can also be used on double doors when using a mullion.
- INOX ED70 and ED70F Rim Exit Devices are non-handed with a universal design that allows them to easily retrofit the Von Duprin 98/99 series and Sargent 8800 series installations when paired with INOX exit device trim.
- INOX ED70 and ED70F Rim Exit Devices will fit all doors up to 36" in width and 1-3/4" in thickness. 48" width devices can be ordered as an option. Cylinder dogging is also available as an option on a non-rated device.
- RIM, SVR (Surface Vertical Rod) and LBR (Less Bottom Rod)
- Cylinder Dogging, Alarm Kit, Glass Bead Shim Kits & Mullions available

#### Code Compliance



- ANSI/BHMA A156.3 Grade 1 Exit Devices
- ANSI/BHMA A156.29 Exit Lock and Alarm
- UL Listed for ANSI/UL10B and UL10C, CAN/ULC S104 up to 3 Hours
- UBC Standard 7-2 (1997) NFPA 252
- ANSI/UL 305 and CAN/ULC-S132
- NFPA 80 National Fire Protection - Fire Door Assembly
- NFPA101 National Fire Protection - Life Safety
- ANSI/BHMA A156.18 Finishes
- ANSI A117.1 ADA Accessibility

#### Finishes

- Stocking: US32D
- Special Order: AL-US28, DU-US20, GD, US3, US4, US26, US26D, US10B, US10

#### Optional Trims

Function: Entry, Night Latch, Passage, Dummy

## Door Closers



### DC90 Series Grade 1



#### Specifications

- DC9016: Adjustable Power Size 1 Thru 6 Meets ADA Barrier-Free requirements
- Cast Iron body
- Rack-and-Pinion Design
- Standard, separate and independent, latch, sweep and back-check pressure valves
- Plastic full cover standard
- Optional Delay Action (DA); Hold Open Arm; Cush Arm, Sliding Track available;
- Tri-Pack: Self tapping fixture (SRT), Sex Nuts and Bolts (SNB) and Parallel Arm (PA) Bracket

#### Code Compliance



- ANSI/BHMA A156.4 Grade 1 Closers
- ANSI A117.1 ADA Accessibility
- UL Listed for ANSI/UL10B and UL10C, CAN/ULC S104 up to 3 Hours
- UL 228 UBC Standard 7-2 (1997) NFPA 252
- NFPA 80 National Fire Protection
  - Fire Door Assembly
- NFPA101 National Fire Protection
  - Life Safety
- ANSI/BHMA A156.18 Finishes

#### Finishes

- Stocking: AL-US28
- Special Order: DU-US20, GD, US3, US4, US26, US15, US32D-Cover Only

### DC85 Series Grade 1



#### Specifications

- DC8516: Adjustable Power Size 1 Thru 6 Meets ADA Barrier-Free requirements
- One piece Aluminum Alloy Body
- Rack-and-Pinion design
- Separate and independent, latch, sweep and back-check pressure valves
- Plastic full cover standard
- SRT fasteners furnished standard
- All standard arm applications with covers will allow doors to swing 180°, conditions permitting
- Optional Delay Action (DA); Hold Open Arm; Cush Arm, Sliding Track available;
- Tri-Pack: Self tapping fixture (SRT), Sex Nuts and Bolts (SNB) and Parallel Arm (PA) Bracket

#### Code Compliance



- ANSI/BHMA A156.4 Grade 1 Closers
- ANSI A117.1 ADA Accessibility
- UL Listed for ANSI/UL10B and UL10C, CAN/ULC S104 up to 3 Hours
- UL 228 UBC Standard 7-2 (1997) NFPA 252
- NFPA 80 National Fire Protection
  - Fire Door Assembly
- NFPA101 National Fire Protection
  - Life Safety
- ANSI/BHMA A156.18 Finishes

#### Finishes

- Stocking: AL-US28
- Special Order: DU-US20, GD, US3, US4, US26, US15, US32D-Cover Only

### DC61 Series Grade 1



#### Specifications

- DC6114: Adjustable Power Size: 1 Thru 4
- DC6126: Adjustable Power Size: 2 Thru 6
- One piece Aluminum Alloy Body
- Rack-and-Pinion Design
- Separate and independent, latch, sweep and back-check pressure valves
- DC6114 door closer meets ADA Barrier-Free requirements (adjustable power size 1 thru 4)
- Non-Handed
- Standard Closer comes Less Cover. Optional Slim Cover available by special order.
- Tri-packed
- Optional Delay Action (DA); Hold Open Arm; Cush Arm, Sliding Track available;

#### Code Compliance



- ANSI/BHMA A156.4 Grade 1 Closers
- ANSI A117.1 ADA Accessibility (DC6114 Only)
- UL Listed for ANSI/UL10B and UL10C, CAN/ULC S104 up to 3 Hours
- UL 228 UBC Standard 7-2 (1997) NFPA 252
- NFPA 80 National Fire Protection
  - Fire Door Assembly
- NFPA101 National Fire Protection
  - Life Safety
- ANSI/BHMA A156.18 Finishes

#### Finishes

- Stocking: AL-US28
- Special Order: DU-US20, GD

## Door Closers

### DC3003 Series Grade 2



#### Specifications

- Power EN Size 2 to 4 by template.
- Full rack and pinion type closer with cast aluminum alloy body.
- Adjustable closing (sweep) speed and latching speed.
- Non – Handed Installation.
- Standard hole pattern and mounting location.
- Optional Hold Open Arm.

#### Finishes

- Silver, White, Black
- Other finishes available on request

#### Code Compliance



- Durability and Performance: Tested to all requirements of EN1154:1997.
- Corrosion Resistance: Tested to Grade 3 requirement of corrosion and temperature resistance according to EN1670:2007.
- CE Marking: CE Declaration of Conformity available on request \*.
- Fire Safety: Successfully tested on fire door assemblies according to EN1634-1.
- Fire Safety: Successfully tested on fire door assemblies according to UL10c.
- All tests performed independently and certified by Intertek Testing and Certification Ltd. at UK.

\* CE Certificate available on DC3003 Power Size EN3 only.

## Hinges - HGS Series



#### Features and Specifications:

- Full mortise template hinge.
- With Plain Bearing or Ball bearing
- Suitable for Fire Rated Timber or Metal Doors
- Available in Stainless Steel or Steel material
- Available Size: 4" X 4", 4.5" X 4.5", 5 X 4.5"
- NRP Available

#### Material:

Steel and Stainless Steel

#### Available Finishes:

Satin, Polished



#### Code Compliance:



- ANSI/BHMA A156.1 Type A8112, A5112 and A2112
- ANSI/UL10B and UL10C Fire Rated up to 3 Hours
- Meets USA Federal Spec. #FF-H-116C
- C-UBC California Uniform Builders Code-2001
- NFPA-80 National Fire Protection-1999
- NFPA-101 National Fire Protection-Life Safety-2000

## Architectural Trim & Auxiliary Hardware



### Push and Pull Plates



PPN4016R PPN4016

### Kick/Mop/Armor Plates



### Coordinator



COR72

### Door Pulls



PHIX31 PHIX32 PHIX33 & PHIX34 (45° Leg) PHIX35 PHIX36



Door Stop DS436 Door Stop DS438 Wall Bumpers DS401 Wall Bumpers DS406 Floor Mount DS444 Dust Proof Strike DPS280 Door Holder DH235

Manual Flushbolt for Metal Doors  
FB197M



Automatic Flushbolts for Metal Doors  
FBA292M



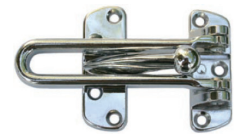
Manual Flushbolt for Wood Doors  
FB196W



Automatic Flushbolts for Wood Doors  
FBA291W



Door Viewers  
DV33220F



Door Guards  
DG128 / DG128BR



Roller Latches  
RL300



Roller Latches  
RL320



Magnetic Door Holders  
DHM2100