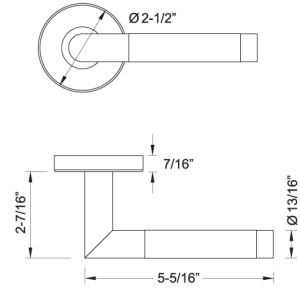


# 213 Cabernet



## Material

Stainless Steel Levers and Escutcheons  
Wood Insert on Lever

## Standard Finishes

- Satin Stainless Steel (630/US32D)
- Bright Polished Stainless Steel (629/US32)

## Functions

### Tubular Latch Set w/RA, SE, GT\* Rose

Passage, 2-3/8" backset = L61  
Passage, 2-3/4" backset = L71  
Privacy, 2-3/8" backset = L62  
Privacy, 2-3/4" backset = L72  
Single Dummy Left = DL  
Single Dummy Right = DR  
Full Dummy = DL + DR  
Communicating/Exit;  
2-3/8" backset = CM6  
2-3/4" backset = CM7

\* See Page 3.1 for RA/SE Rose details  
GT rose coming soon

### Tubular Entry Set w/Deadbolt & w/LA Plate or SF Plate;

2-3/8" backset = C63  
2-3/4" backset = C73

\* See Page 3.3 for details

### Mortise Handle Set w/NY Plate MR Mortise Backset: 2-3/4"

Entrance = MR720  
Dummy = EDP

\* See Page 3.6 for details

## Door Thickness

1-3/8" to 1-3/4" (35mm to 44mm)  
Thick door kits available.

## Features

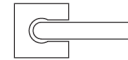
- Concealed fixings
- Spring assisted chassis
- Same lever design with multiple escutcheons and functions to suit different applications



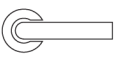
## Escutcheon Options



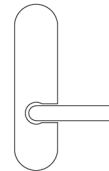
RA Rose  
2-1/2" Dia.  
(64mm Dia.)



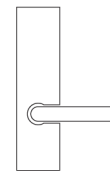
SE Rose  
2-3/8" Sq.  
(60mm Sq.)



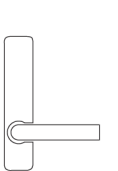
GT Rose  
2-1/16" Dia.  
(53mm Dia.)



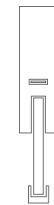
LA Plate  
10-1/2"x2-1/2"  
(267x63mm)



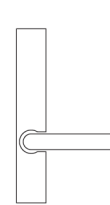
SF Plate  
10-1/2"x2-1/2"  
(267x63mm)



SM Plate  
8-7/8" x 1-5/8"  
(226x42mm)



NY Plate  
17-1/8" x 2-1/2"  
(453 x 63mm)



MU Plate  
10-1/2" x 1-5/8"  
(267x42mm)

### Mortise Set w/RA, SE, GT Rose or w/LA, SF, SM\* Plate

MC Mortise Backset: 2-3/4"  
Passage = MC701  
Privacy = MC722  
Storeroom = MC707  
Classroom = MC705  
Entrance = MC720  
Entry w/o Toggle = MC738  
Entry w/o Deadbolt = MC704  
Dummy = MDP

\* See Page 3.2 and 3.4 for details  
GT and SM mortise set coming soon

### Multipoint Trim w/MU Plate\*

Key to Lever Distance: 3-5/8" (92mm)  
Passage = MA10  
Patio US Cylinder = MA15  
Entry US Cylinder = MA55  
Patio Euro Cylinder = MA25  
Entry Euro Cylinder = MA35  
Half Passage/Half Dummy = MA20  
Full Dummy = MADP

\* MU plate coming soon

## How to Order/Specify:

Rose/Plate	Lever	Function	Finish	Handing*	Other
RA	213	L61	32	-	-

\* Handing required on single dummy, entry, mortise, multipoint functions and custom set.