



- SOLID BRASS - 60% COPPER & 40% ZINC
- 6 FINISHES: BLACK, OIL RUBBED BRONZE, SATIN NICKEL, POLISHED BRASS, ANTIQUE BRASS, & UNLACQUERED BRASS
- NO RUST - PERFECT FOR COASTAL AREAS
- TRADITIONAL HANDCRAFTED DESIGNS - HAND CAST & HAND FINISHED
- ALL PRODUCTS STOCKED IN BLACK ONLY
- LIMITED LIFETIME WARRANTY
- ALL FASTENERS STAINLESS STEEL

Seaside & HRV Price List Printed Separately from Catalog

For terms and conditions visit our website at [www.CoastalBronze.com/terms](http://www.CoastalBronze.com/terms)

Polished Brass  
**US03**



Unlacquered Brass  
**US03UN**



Antique Brass  
**US05**



Oil-Rubbed Bronze  
**US10B**



Satin Nickel  
**US15**



Black  
**US19**



(Standard Finish)

US19/Black is the **only** stocked finish.

All other finishes are considered **custom**. They have special pricing in the price list under "Custom".

**Custom finishes are not returnable except for defective product.**

Custom products & finishes have a 6 week lead time on average. Please contact us for rush orders.

Limited Lifetime Warranty is 5 years - only applicable to functionality  
 Limited Finish Warranty is 2 years - does not cover weather damage.

### Installation Tips

As with all hardware, correct installation of products increases longevity. We urge you to not overtighten any screws that are used with these products. Incorrect installation can cause the finish to become damaged or in extreme situations to break or crack.

Damage, scratches, wear, and weathering can all cause finish degradation and steps should be taken to make sure the product is not being damaged or scratched during use.



(S7-110-19)



(S7-180-19)



(S7-195-19)



(S4-410-19)



(S3-200-19)



(S5-107-19)



(S6-310-19)



(S8-410-19)



(Left Hand Shown)

S Shutter Dog

**S7-100-RH/LH-19**

Dimensions: 6-1/2" L x 2-1/2" W

Handing: Specify LH or RH



English Rat Tail Shutter Dog

**S7-110-19**

Dimensions: 6" L x 1-1/2" W

Projection: 1"



Propeller Shutter Dog

**S7-120-19**

Dimensions: 7" L x 2" W

---

All Shutter Dogs Include a 4-1/2" Lag - 5/16" Thick - (**S8-200-19**)

---



(Left Hand Shown)

Georgian Side Shutter Dog

**S7-130-RH/LH-19**

Dimensions: 5-1/4" L x 5-1/2" W

Handing: Specify LH or RH

Projection: 3/4"



Rat Tail Shutter Dog

**S7-140-19**

Dimensions: 5-3/4" L x 1-1/4" W

Projection: 2"



Georgian Shutter Dog

**S7-150-19**

Dimensions: 6-1/2" L x 2-1/2" W

Projection: 1"

Shutter Dog Horizontal Bar Mount - Offset

**S8-300-RH/LH-19**

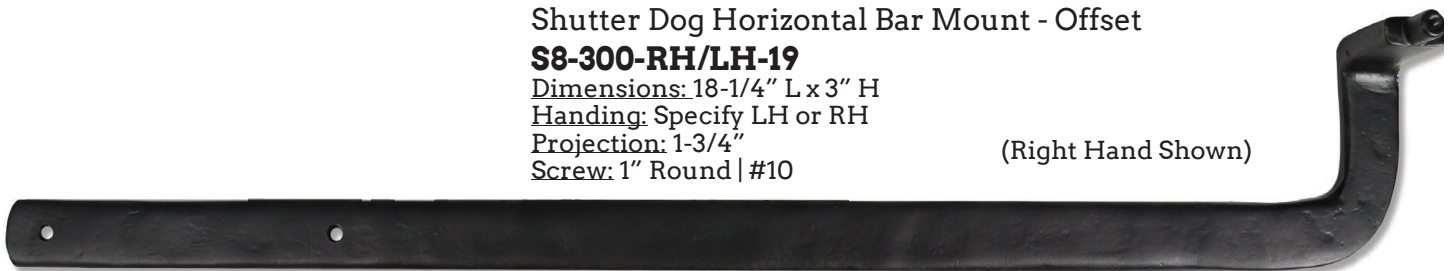
Dimensions: 18-1/4" L x 3" H

Handing: Specify LH or RH

Projection: 1-3/4"

Screw: 1" Round | #10

(Right Hand Shown)





Round Shutter Dog

**S7-160-19**

Dimensions: 7-3/4" L x 1-1/4" W  
Projection: 1/3"



(Right Hand Shown)

Diamond Shutter Dog

**S7-170-RH/LH-19**

Dimensions: 5-1/4" L x 5-1/2" W  
Handing: Specify LH or RH  
Projection: 3/4"



French Shutter Dog

**S7-180-19**

Dimensions: 6" L x 2-1/2" H  
Paddle: 4" W  
Reversible



Holds a shutter dog on a dummy shutter. Shutter dog would be inoperable, for decorative use only.

Dog Bar Mount

**S7-190-19**

Dimensions: 1-3/4" L x 3/4" W  
Projection: 3/4"  
Screw: 1" Flat | #8



Protects the shutter surface from being damaged by a shutter dog. The shutter dog slots into the opening.

Shutter Dog Bar Standoff

**S7-195-19**

Dimensions: 1-1/4" L x 3/4" W  
Projection: 1/2"  
Screw: 1" Half Round | #6



Square Post

**S8-100-19**

Dimensions: 2" L x 2" W  
Projection: 2-3/4"  
Screw: 1" Round | #10

Stainless Steel Lag

**S8-200-19**

Dimensions: 4-1/2" L x 5/16" Th

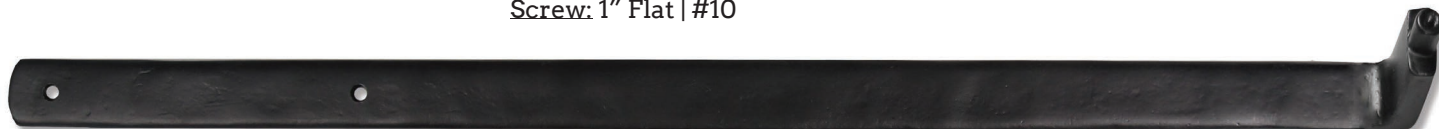


This lag is included with every Shutter Dog by default, at no extra charge.

Shutter Dog Horizontal Bar Mount - Offset

**S8-325-19**

Dimensions: 18-1/4" L x 1" W  
Projection: 1-3/4" H  
Screw: 1" Flat | #10



**Bean Strap****Arch Strap****Arch Reverse Texture Strap****0" Offset****3/4" Offset****1-1/4" Offset****2-1/4" Offset**

All Active Shutter Straps can be used with any pintle combination.

All Straps (except New York) are sold individually.

10" Arch Strap

**S2-100/101/102/103-19**

Dimensions: 10" L x 1-1/4" W

Offset:

S2-100 - 0" Offset

S2-101 - 3/4" Offset

S2-102 - 1-1/4" Offset

S2-103 - 2-1/4" Offset

14" Arch Strap

**S2-200/201/202/203-19**

Dimensions: 14" L x 1-1/4" W

Offset:

S2-200 - 0" Offset

S2-201 - 3/4" Offset

S2-202 - 1-1/4" Offset

S2-203 - 2-1/4" Offset

10" Reverse Texture Arch Strap

**S2-450/451-19**

Dimensions: 10" L x 1-1/4" W

Offset:

S2-450 - 3/4" Offset

S2-451 - 1-1/4" Offset

14" Reverse Texture Arch Strap

**S2-460/461-19**

Dimensions: 14" L x 1-1/4" W

Offset:

S2-460 - 3/4" Offset

S2-461 - 1-1/4" Offset

10" Bean Strap

**S2-300/301/302/303-19**

Dimensions: 10" L x 1-1/4" W

Offset:

S2-300 - 0" Offset

S2-301 - 3/4" Offset

S2-302 - 1-1/4" Offset

S2-303 - 2-1/4" Offset

14" Bean Strap

**S2-400/401/402/403-19**

Dimensions: 14" L x 1-1/4" W

Offset:

S2-400 - 0" Offset

S2-401 - 3/4" Offset

S2-402 - 1-1/4" Offset

S2-403 - 2-1/4" Offset

10" Dummy Bean Strap

**S2-510-19**

Dimensions: 10" L x 1-1/4" W

Edge Wrap: 1-1/2"

14" Dummy Bean Strap

**S2-514-19**

Dimensions: 14" L x 1-1/4" W

Edge Wrap: 1-1/2"

10" Dummy Arch Strap

**S2-610-19**

Dimensions: 10" L x 1-1/4" W

Edge Wrap: 1-1/2"

14" Dummy Arch Strap

**S2-614-19**

Dimensions: 14" L x 1-1/4" W

Edge Wrap: 1-1/2"

All Straps Use  
1" Round | #10



New York Shutter Strap - Pair

**S3-100/101/102/103-19**

Dimensions: 6-3/4" W x 4-1/4" H

Offset:

S3-100 - 0" Offset

S3-101 - 3/4" Offset

S3-102 - 1-1/4" Offset

S3-103 - 2-1/4" Offset

Note: These are sold as a paired set.  
Not sold individually.

All Straps Use  
1" Round | #10

---

All Active Shutter Straps can be  
used with any pintle combination.

---



6" T-Hinge Arch Strap

**S3-200/201/202/203-19**

Dimensions: 2-1/2" W x 6" H

Offset:

S3-200 - 0" Offset

S3-201 - 3/4" Offset

S3-202 - 1-1/4" Offset

S3-203 - 2-1/4" Offset



**Screw-In Pintle**  
**S4-600-19**  
 Dimensions: 3-3/4" L x 2-3/4" W  
 Drive: 2-1/2"



**Drive-In Pintle**  
**S4-700-19**  
 Dimensions: 4-1/2" L x 2" H  
 Drive: 3-1/2"



**Strap Pintle Kit**  
**S4-710-19**  
 Dimensions: 2-1/2" L x 1/2" W  
 Note: Connects two strap hinges.  
 Hinges are **not** included.



**Pintle on Plate - 3/4" Offset**  
**S4-400-19**  
 Dimensions: 3-1/2" L x 1-1/4" W  
 Offset: 3/4"  
 Screw: 1" Round | #10



**Pintle on Plate - 1-1/4" Offset**  
**S4-410-19**  
 Dimensions: 3-1/2" L x 1-1/4" W  
 Offset: 1-1/4"  
 Screw: 1" Round | #10



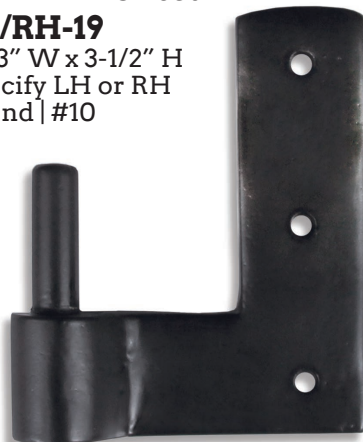
**Pintle on Plate - 2-1/4" Offset**  
**S4-420-19**  
 Dimensions: 3-1/2" L x 1-1/4" W  
 Offset: 2-1/4"  
 Screw: 1" Round | #10

All pintles can be used with **any** shutter strap.

**Double Pintle on Plate - 3/4" Offset**  
**S4-440-19**  
 Dimensions: 5" L x 1-1/4" W  
 Offset: 2-1/4"  
 Screw: 1" Round | #10



**Jamb Pintle - 1-1/4" Offset**  
**S4-500-LH/RH-19**  
 Dimensions: 3" W x 3-1/2" H  
 Handing: Specify LH or RH  
 Screw: 1" Round | #10



(Left Hand Shown)

**Jamb Pintle - 2-1/4" Offset**  
**S4-510-LH/RH-19**  
 Dimensions: 4" W x 3-1/2" H  
 Handing: Specify LH or RH  
 Screw: 1" Round | #10



(Right Hand Shown)



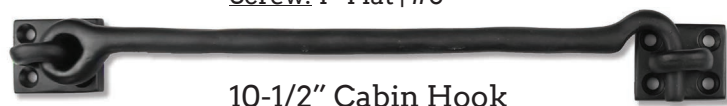
Cabin Hook Catches are available by request. Specify on your P.O.  
**SKU: S5-150-19**



**4-1/2" Cabin Hook**  
**S5-104-19**  
 Dimensions: 4-1/2" L x 1-1/2" W  
 Keeper: 1" L x 3/4" W  
 Screw: 1" Flat | #8



**7-1/2" Cabin Hook**  
**S5-107-19**  
 Dimensions: 7-1/2" L x 1-1/2" W  
 Keeper: 1" L x 3/4" W  
 Screw: 1" Flat | #8



**10-1/2" Cabin Hook**  
**S5-110-19**  
 Dimensions: 10-1/2" L x 1-1/2" W  
 Keeper: 1" L x 3/4" W  
 Screw: 1" Flat | #8



**15" Cabin Hook**  
**S5-115-19**  
 Dimensions: 15" L x 1-1/2" W  
 Keeper: 1" L x 3/4" W  
 Screw: 1" Flat | #8



**20" Cabin Hook**  
**S5-120-19**  
 Dimensions: 20" L x 1-1/2" W  
 Keeper: 1" L x 3/4" W  
 Screw: 1" Flat | #8



**10" Window Stay**  
**S5-200-19**  
 Dimensions: 10" L x 1" W  
 Keeper: 2" L x 5/8" W  
 Includes: (1) Window Stay, 2 Keepers  
 Screw: 1" Flat | #10



**12" Window Stay**  
**S5-205-19**  
 Dimensions: 12" L x 1" W  
 Keeper: 2" L x 5/8" W  
 Includes: (1) Window Stay, 2 Keepers  
 Screw: 1" Flat | #10



**20" Bahama Window Stay**  
**S5-240-19**  
 Dimensions: 20" L x 3/4" W  
 Keeper: 2" L x 3/4" W  
 Includes: (1) Window Stay, 2 Keepers, 1 Locking Pin  
 Screw: 1" Flat | #10



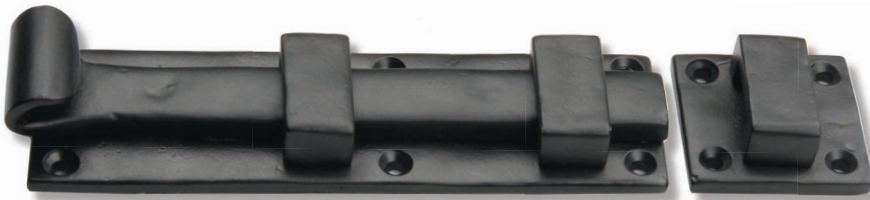
4" Slide Bolt  
**S6-204-19**  
 Dimensions: 5" L x 1-1/2" W  
 Projection: 1-3/4"  
 Keeper: 1-3/4" W x 3/8" H  
 Throw: 3/4"  
 Screw: 1" Half Round | #8



6" Slide Bolt  
**S6-206-19**  
 Dimensions: 7" L x 1-1/2" W  
 Projection: 1-3/4"  
 Keeper: 1-3/4" W x 1/2" H  
 Throw: 1-1/4"  
 Screw: 1" Half Round | #8



6" Slide Bolt with Knob  
 - Long Throw  
**S6-308-19**  
 Dimensions: 8-3/4" L x 1-1/2" W  
 Projection: 2"  
 Keeper: 1-1/2" W x 2" L  
 Throw: 2"  
 Screw: 1" Half Round | #8



6" Slide Bolt - Long Throw  
**S6-310-19**  
 Dimensions: 8-1/4" L x 1-3/4" W  
 Projection: 1-3/4"  
 Keeper: 1-3/4" W x 1-3/4" L  
 Throw: 1-1/4"  
 Screw: 1" Half Round | #8

Mortise or Universal Strikes can be substituted for Surface Strikes.  
 Please specify when ordering.



Mortise Strike  
**S6-500-19**  
 Dimensions: 1-1/2" L  
 x 1" W  
 Screw: 1" Flat | #8  
 Works with:  
**(S6-204) & (S6-308)**



Mortise Strike  
**S6-501-19**  
 Dimensions: 1-3/4" L  
 x 1-3/8" W  
 Screw: 1" Flat | #8  
 Works with:  
**(S6-206)**



Universal Strike  
**S6-505-19**  
 Dimensions: 2-3/8" L  
 x 1-1/4" W  
 Screw: 1" Flat | #8  
 Works with:  
**(S6-204) & (S6-308)**



Universal Strike  
**S6-506-19**  
 Dimensions: 2-3/8" L  
 x 1-3/8" W  
 Screw: 1" Flat | #8  
 Works with:  
**(S6-206)**



Window Latch  
**S5-210-19**  
Dimensions: 4" L x 1-3/4" W  
Projection: 1-3/4"  
Keeper: 1-3/4" H x 3/8" W  
Throw: 3/4" W  
Screw: 1" Flat | #10



Flip Latch  
**S6-330-19**  
Dimensions: 4" W x 1" H  
Mounting Plate: 2" H x 1-1/4"  
Projection: 1"  
Keeper: 2-1/2" H  
Screw: 3/4" Flat | #8



Ring Pull on Plate  
**S8-400-19**  
Dimensions: 2" W x 1-1/4" H  
Projection: 1-1/4"  
Ring: 1-3/4" Diameter  
Screw: 3/4" Flat | #8



Bullet Catch  
**S8-420-19**  
Bullet Dimensions: 2" H x 3/4" W  
Catch Bracket: 2-3/4" H x 5/8" W  
Screw: 1" Half Round | #6



Bullet Catch - Short  
**S8-410-19**  
Bullet Dimensions: 1-1/4" H x 3/4" W  
Catch Bracket: 1" H x 1-1/2" W  
Screw: 1" Round | #6



Bullet Catch - Long  
**S8-415-19**  
Bullet Dimensions: 3-1/4" H x 3/4" W  
Catch Bracket: 1" H x 1-1/2" W  
Screw: 1" Round | #6