

2310 Passage Set Lever

Applications:

- Multi-family

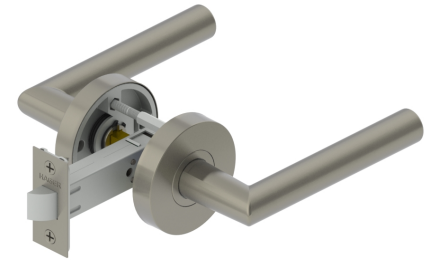
Notes:

- Five-year warranty
- No exposed mounting screws

- Non-handed

Function:

- Passage



PRODUCT SPECIFICATIONS

CERTIFICATIONS:

- ADA Compliant ANSI A 117.1 Accessibility Code

EXPOSED TRIM:

- Lever is zinc based
- Rose is stainless steel

ROSE DIAMETER:

- 2-1/2" (63.5 mm)

DOOR THICKNESS:

- 1-3/8" - 1-3/4" (35 mm - 45 mm)

BACKSET:

- 2-3/4" (70 mm) standard
- 2-3/8" (60 mm) optional

LATCHBOLT:

- 7/16" (11 mm) throw
- 1" x 2-1/4" (25 mm x 57 mm) faceplate

STRIKES:

- Square and round corner full-lip strikes come standard
- Optional strikes available

FINISHES:

- US3, US10B, US15, US26, US26D
- US3 and 26 finish may be subject to extended lead times, consult customer service for availability.

FUNCTION:

- 10 - Passage

WARRANTY:

- Five-year

LEVER OPTIONS:

- Charles, Louis, Johnston, Joshua, and Warren levers

OPTIONS:

- Split finish available