

## 2340 Privacy Set Lever

**Application:**

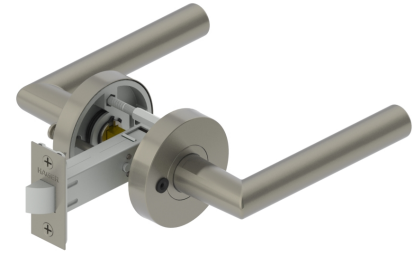
- Multi-family

**Notes:**

- Five-year warranty
- No exposed mounting screws
- Non-handed

**Function:**

- Privacy



### PRODUCT SPECIFICATIONS

**CERTIFICATIONS:**

- ADA Compliant ANSI A 117.1 Accessibility Code

**EXPOSED TRIM:**

- Lever is zinc based
- Rose is stainless steel

**ROSE DIAMETER:**

- 2-1/2" (63.5 mm)

**DOOR THICKNESS:**

- 1-3/8" - 1-3/4" (35 mm - 45 mm)

**BACKSET:**

- 2-3/4" (70 mm) standard
- 2-3/8" (60 mm) optional

**LATCHBOLT:**

- 7/16" (11 mm) throw
- 1" x 2-1/4" (25 mm x 57 mm) faceplate

**STRIKES:**

- Square and round corner full-lip strikes come standard
- Optional strikes available

**FINISHES:**

- US3, US10B, US15, US26, US26D
- US3 and 26 finish may be subject to extended lead times, consult customer service for availability.

**FUNCTION:**

- 40 - Privacy

**WARRANTY:**

- Five-year

**LEVER OPTIONS:**

- Charles, Louis, Johnston, Joshua, and Warren levers

**OPTIONS:**

- Split finish available