

## 2527 BTB Set Lever

Grade 2 Cylindrical Lever

**Applications:**

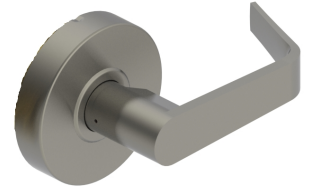
- Standard duty commercial

**Notes:**

- No exposed mounting screws
- Non-handed

**Function:**

- BTB



### PRODUCT SPECIFICATIONS

**CERTIFICATIONS:**

- ADA Compliant ANSI A117.1 Accessibility Code
- UL/cUL Listed for all functions up to 3 hours "A" label single doors
- UL10C Positive Pressure Rated
- UL10B Neutral Pressure Rated
- Meets BHMA A156.2 test standards

**EXPOSED TRIM:**

- Wrought brass, bronze, and stainless steel
- Lever is zinc based, plated to match BHMA symbols

**ROSE DIAMETER:**

- 3-11/32" (85 mm)

**DOOR THICKNESS:**

- 1-3/8" - 2" (35 mm - 51 mm)

**BACKSET:**

- 2-3/4" (70 mm) standard
- 2-3/8" (60 mm) optional

**FINISHES:**

- US3, US10B, US26D

**FUNCTIONS:**

- 27 BTB Dummy

**WARRANTY:**

- Five-year

**LEVER OPTIONS:**

- Archer, Withnell levers

**OPTIONS:**

- Lead lined
- Tactile warning